



WAIKĪKĪ IMPROVEMENT ASSOCIATION

Wikiwiki Wire

E-newsletter keeping you up-to-date on Waikīkī news, features, trends and more!



Contents



4

**KALĀKAUA OPEN STREETS
ATTRACTS BICYCLERS, STROLLERS
& JOGGERS TO WAIKĪKĪ**

6

**THE WAIKĪKĪ MAYORAL FORUM:
MEET THE CANDIDATES**

7

**WAIKĪKĪ IMPROVEMENT
ASSOCIATION MID YEAR
MEMBERSHIP MEETING - JULY 15**

8

**WAIKĪKĪ BEACH HULA SHOW -
SUSPENSION EXTENDED**

9

**WAIKĪKĪ STREET ACTIVITIES
CANCELLED UNTIL FURTHER
NOTICE**

MORE WAIKĪKĪ FOOD, NEWS & EVENTS

'IOLANI, INC HOPES TO RAISE OVER \$10,000 FOR 'IOLANI PALACE WITH SALES OF A LIMITED-EDITION FACE MASK

PARK FREE! ENJOY COMPLIMENTARY PARKING WITH ANY PURCHASE AT WAIKĪKĪ BEACH WALK

SPITFIRE ROTISSERIE & FLATBREAD OPEN FOR TAKE OUT

REDISCOVER WAIKĪKĪ THIS SUMMER WITH ROYAL HAWAIIAN CENTER

BILLS HAWAII OFFERS KAMA'ĀINA SPECIAL

TANAKA OF TOKYO TAKE OUT & DINE IN

HAWAI'I CONVENTION CENTER CONTINUES TO SERVE COMMUNITY AS LOCATION FOR HAWAI'I UNEMPLOYMENT & ELECTIONS SERVICES

WOLFGANG'S STEAKHOUSE DINE-IN OR TAKE-OUT WITH 3 HOURS OF FREE PARKING

IL LUPINO OPEN FOR DINE-IN AND TAKE-OUT

\$5 & \$10 FLAT PARKING RATES AVAILABLE IN THE WAIKĪKĪ BUSINESS PLAZA & WAIKĪKĪ SHOPPING PLAZA

ISLAND VINTAGE COFFEE, ISLAND VINTAGE WINE BAR, & ISLAND VINTAGE SHAVE ICE OPEN

HARRIS HAWAII MARKETING GROUP: PIVOT TOWARDS NEW CUSTOMER RELATIONSHIPS

NOI THAI CUISINE OPEN & OFFERS \$20 TO-GO BENTOS

KALĀKAUA OPEN STREETS Attracts Bicyclers, Strollers & Joggers to Waikīkī

The City and County of Honolulu along with the Hawai`i Bicycling League announced the launch of “Kalākaua Open Street Sundays”



For four consecutive Sundays, beginning June 14, bicyclists, joggers, and walkers have been able to travel down Kalākaua Avenue in Waikīkī to enjoy outdoor exercise while promoting one of the simplest ways to lower our environmental footprint with other members of our island ‘ohana.

“We’ve all noticed more people out walking, jogging, and biking as a result of the COVID-19 pandemic,” said Mayor Kirk Caldwell. “Opening Kalākaua Avenue to everyone so they have a place to exercise while allowing our local families the opportunity to enjoy a less-crowded Waikīkī during this time is a win-win for everyone. We hope people will dine in Waikīkī’s excellent restaurants and shop in its stores, uncrowded by tourists, helping our local economy while staying safe and healthy.”

This is Honolulu’s version of an Open Street Initiative, similar to “Slow” or “Open” streets in other cities, adapted to the realities of the Covid-19 pandemic. These streets, usually bumper to bumper with motor vehicles, are being opened for more people-focused activities such as biking, jogging, or walking. With the decrease in vehicular traffic on the roadways and minimal tourism, Kalākaua Open Street Sundays will also help reconnect kama’āina and merchants along Kalākaua Avenue.

Credit: Hawaii Bicycling - <https://www.hbl.org/openstreets/>

- Free bike parking with HBL’s free Bike Valet Service
- What stores & shops will be open
- Where to find car parking
- How to volunteer!



THE WAIKĪKĪ MAYORAL FORUM MEET THE CANDIDATES

The Waikīkī Neighborhood Board #9 and the Waikīkī Improvement Association hosted the Waikīkī Mayoral Forum on June 24th via ZOOM and live streamed on KHON 2.

Mayoral candidates debate virtually over issues in the Waikīkī district and the economy. Watch and Listen to *What the Candidates had to say!*



Keith Amemiya



Rick Blangiardi



Colleen Hanabusa



Mufi Hannemann



Kimberly Pine

GO TO <https://www.waikikiimprovement.com/waikiki-mayoral-forum>



Wednesday's mayoral debate took place virtually, the first in a long line as candidates get closer to election. The forum was hosted by the Waikīkī Improvement Association, with panelist Allison Schaefers from the Honolulu Star Advertiser, Always Investigating's Gina Mangieri from KHON2 and Catherine Cruz reporter at Hawai'i Public Radio. Most of the conversation was specific to the Waikīkī area and tourism.

Some of the major hot button topics were the COVID-19 pandemic and how to get Oahu's economy back on track. While some candidates talked about the need to turn to other industries, other candidates said the City needs to look at federal funding to help the existing businesses that are struggling.

PRESENTED BY:



WAIKĪKĪ
IMPROVEMENT
ASSOCIATION



WAIKIKI
NEIGHBORHOOD
BOARD NO. 9

2250 Kalakaua Avenue, Suite 315, Honolulu, HI. 96815
808.923.1094 mail@waikikiimprovement.com



WAIKIKI IMPROVMENT ASSOCIATION

MID YEAR MEMBERSHIP MEETING

DATE: WEDNESDAY, JULY 15, 2020
TIME: 4:00 PM
VIA: ZOOM

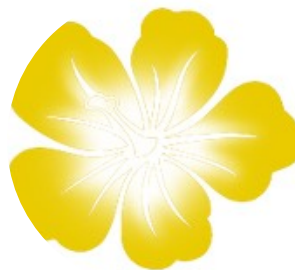
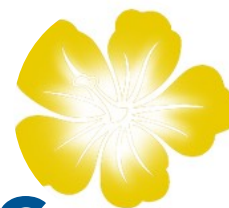
For more info:

 JoAnn@WaikikiImprovement.com
 808 923 1094

REGISTER IN ADVANCE FOR THIS WEBINAR:

<https://www.waikikiimprovement.com>

After registering, you will receive a confirmation email containing information about joining the webinar.



Waikiki Beach Hula Show

AT THE KUHIO BEACH HULA MOUND

KUHIO BEACH HULA SHOW - JULY 2020

THE KUHIO BEACH HULA SHOWS ARE SUSPENDED UNTIL FURTHER NOTICE, ON ADVICE OF THE HAWAII STATE HEALTH DEPARTMENT AND THE MAYOR'S OFFICE OF THE CITY AND COUNTY OF HONOLULU, FOR PUBLIC HEALTH AND SAFETY DUE TO THE CORONAVIRUS PANDEMIC.

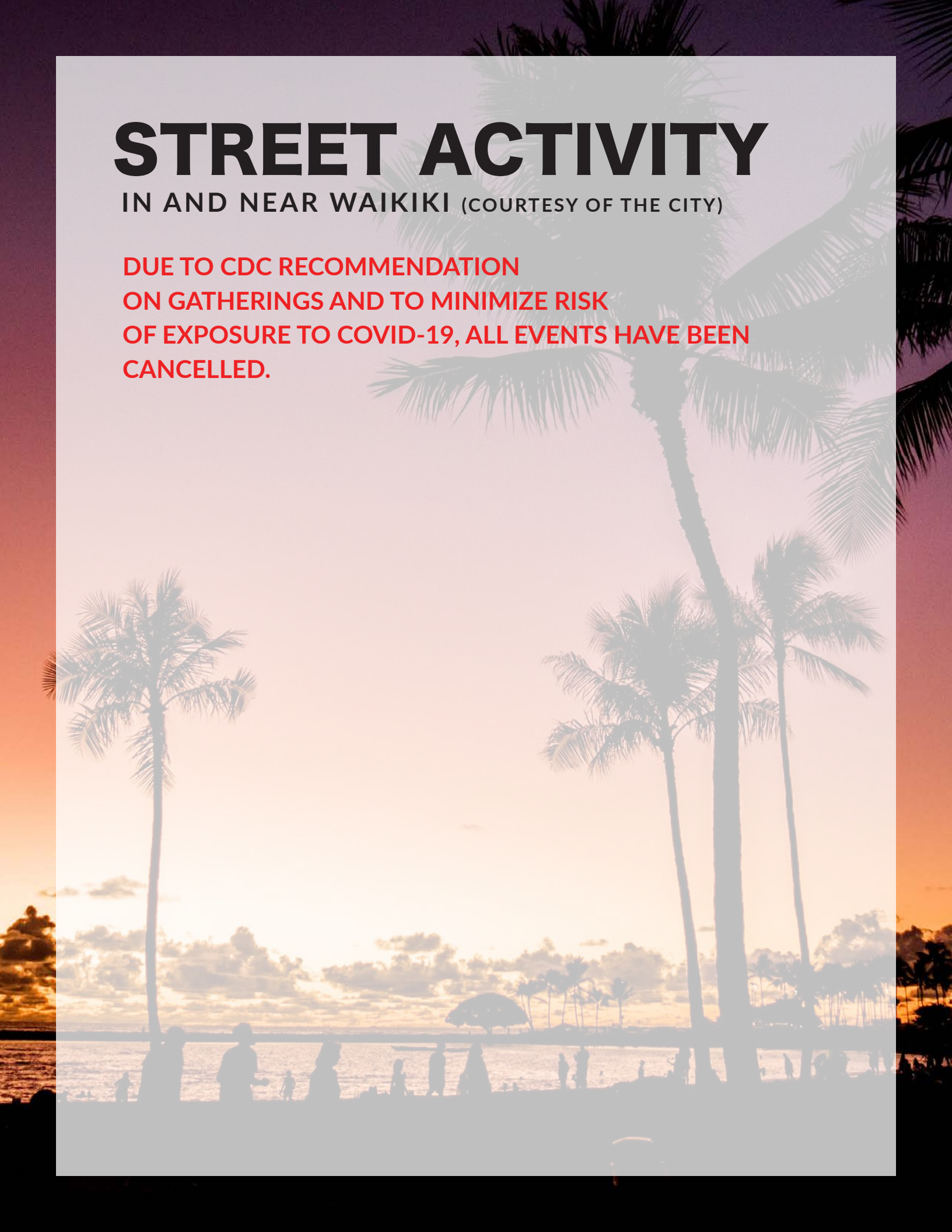
The Kuhio Beach Hula Show is held regularly Tues-Thur-Sat 6:30-7:30 PM at the Kuhio Beach Hula Mound.



STREET ACTIVITY

IN AND NEAR WAIKIKI (COURTESY OF THE CITY)

**DUE TO CDC RECOMMENDATION
ON GATHERINGS AND TO MINIMIZE RISK
OF EXPOSURE TO COVID-19, ALL EVENTS HAVE BEEN
CANCELLED.**

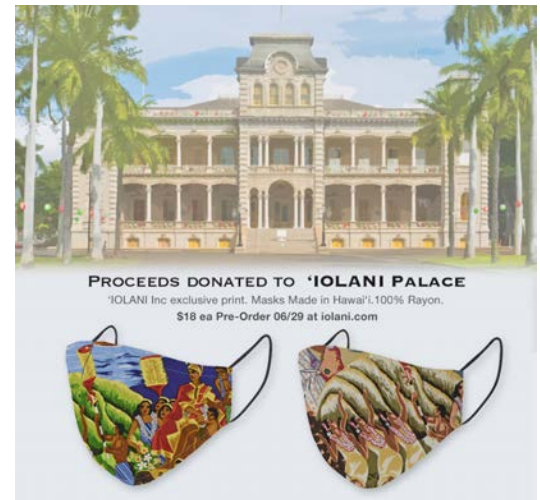




'IOLANI, INC. ANNOUNCES LIMITED-EDITION FACE MASKS FEATURING VINTAGE ARTWORK TO KŌKUA 'IOLANI PALACE

The kama'āina fashion company with a proud Made-in-Hawai'i mission for 67 years, hopes to raise over \$10,000 for 'Iolani Palace which has lost more than \$600,000 due to the closure resulting from the COVID-19 pandemic. Pre-orders open today at iolani.com.

HONOLULU, HI – (Monday, June 29, 2020) In a small factory with four machines and a dirt floor overlooking 'Iolani Palace, our grandparents, Edith and Keiji Kawakami, created the very first 'IOLANI brand Aloha shirt. The view of 'Iolani Palace signified great leadership and royalty and inspired the company's name, and paved a strong path for what would eventually become a three-generation family-run business in Hawai'i. Today, with your kōkua, the legacy our grandparents founded almost 70 years ago embarks on an important mission to honor and support 'Iolani Palace during these most difficult times. During the closure resulting from the COVID-19 pandemic, 'Iolani Palace lost about \$7,700 a day in revenue from tour and shop sales, totaling more than \$600,000 to date. Using a vintage 'IOLANI print reflecting Hawai'i's rich history, we have created a unique, limited-edition 'IOLANI face mask which retails for \$18. Pre-orders will be accepted from today at iolani.com. Proceeds from the sale of each mask will benefit The Friends of 'Iolani Palace. In addition, the Kawakami Family will match donated proceeds up to \$10,000.



“We are so grateful for this partnership with 'IOLANI and their generous aloha spirit,” said Paula Akana, Executive Director of The Friends of 'Iolani Palace. “It's been inspiring to see the community coming together to support our mission to ensure the future of this important piece of Hawai'i's history.”

“We truly believe that my grandma and grandpa are smiling down on us, happy that we are able to help our community in this small way,” said Alx Kawakami, 'IOLANI Director of Development. “We hope everyone will help us make this project a huge success!”

Pre-order your mask(s) starting Monday, June 29th, 2020 at iolani.com.

For more information, please visit: iolani.com

Images may be downloaded here: <https://tinyurl.com/y8t88wfs>

SPITFIRE

ROTISSERIE & FLATBREAD

at Dukes Lane Market & Eatery is
Now Open for Take Out

Breakfast

Ultimate Hashbrown 8.49

Hashbrown with bacon, red and green bell peppers, chopped pork sausage, onions, shredded Mozzarella and Cheddar cheese. Served with eggs

Kim Chee Fried Rice 8.99

Rice fried in kim chee base, with teriyaki pork, bacon, and green onion. Served with eggs

Breakfast Burrito 9.75

Sausage, Cheddar cheese, eggs, onions, tomato, salsa, and Mozzarella cheese. Served rice or breakfast potatoes

Island Breakfast 6.99

Two eggs with one choice of meat: Ham, Pork Link Sausage, Portuguese Sausage, Bacon, or Spam. Served with rice or breakfast potatoes

Island Breakfast Deluxe 8.99

Two eggs with two choices of meat: Ham, Pork Link Sausage, Portuguese Sausage, Bacon, or Spam. Served with rice or breakfast potatoes

6:30 AM – 9:30 AM DAILY

Create Your Own Omelette 9.99

1 Choose your Vegetables (3 CHOICES)

- Spinach
- Zucchini
- Mushroom
- Broccoli
- Green Onion
- Bell Pepper
- Tomato

2 Choose your Meat (1 CHOICE)

- Ham
- Bacon
- Portuguese Sausage
- Spam
- Pork Sausage

3 Choose your Cheese (1 CHOICE)

- Cheddar
- Provolone
- Monterey Jack
- Pepper Jack
- Swiss



Hot & Fresh Malasadas

Cinnamon Sugar Malasada 1.25

Haupia Filled Malasada

1.50

THE BAKER'S DOZEN | Buy 12, Get 1 Free!

10% OFF ALL TAKEOUT ORDERS



99¢ ANY SIZE FOUNTAIN DRINK
with any Spitfire purchase

Local Favorites

Rotisserie Chicken Plate (Half) 13.99

Served with rice or mashed potatoes and mixed greens or macaroni salad

Family Pack Rotisserie Chicken 25.99

Whole rotisserie chicken served with rice or mashed potatoes and mixed greens or macaroni salad

Fried Chicken Plate 10.75

3 pieces: breast or thigh, leg, and wing. Served with rice or mashed potatoes and choice of side

Teriyaki Chicken 8.59

Chicken marinated in teriyaki sauce. Served with choice of starch and side

Chicken Tenders 9.99

Served with fries

Kalua Pork Loco Moco 6.99

Kalua pork, eggs, rice, brown gravy

Butter Garlic Shrimp 11.99

Shrimp sautéed in garlic and butter. Served with rice and pineapple wedges

Coconut Shrimp 12.49

Breaded coconut shrimp with sweet chili dipping sauce. Served with choice of starch and side

Garlic Fresh Ahi 13.99

Fresh ahi and deli made tartar sauce. Served with choice of starch and side

Add Garlic Shrimp +4

Hamburger Steak 12.49

Beef patty covered in brown gravy and topped with onions. Served with choice of starch and side

Loco Moco Supreme 7.99

Hamburger patty, gravy, onions, eggs, and rice

Salad

Poke Salad

Regular (4oz) 13
Large (6oz) 17

Mixed greens, carrot, cucumber, tomato, radish

Farmer's Salad 9

Add Grilled Chicken Breast +5
or Fresh Catch of the Day +7



Poke Bowls

MARKET FRESH AHI

Regular (1/4 lb.) 11 **Large (1/3 lb.) 15**

- Choose your Starch or Greens**
White Rice, Brown Rice, or Mixed Greens (+2) *Rice is topped with furikake
- Choose your Poke (2 Choices)**
Spicy Ahi, Hawaiian Ahi, Shoyu Ahi, Wasabi Ahi, Sesame Tako, Spicy Hawaiian Tako, or Tamari Ahi (Gluten-free soy sauce, sweet onion, sesame oil, red chile flakes)
- Add-Ons** Avocado (+2)

Poke by the Pound Sold by 1/4 lb. or 1/2 lb. **25/lb.**

Flatbread Pizza

Three Cheese 9
Provolone cheese, Mozzarella cheese, Parmesan cheese, and tomato sauce

Hawaiian 14
Pork belly, pineapple, chicharrones, Mozzarella cheese, Provolone cheese, and tomato sauce

Pepperoni 12
Provolone cheese, Mozzarella cheese, and tomato sauce

Mushroom 16
Olive oil, garlic, Mozzarella, Provolone, Parmesan cheese

BBQ Chicken 13
Red onion, cilantro, Jack and Cheddar cheeses

Yes, No Meat! 12
Mixture of grilled eggplant, squash, mushroom, kale, Provolone cheese, Mozzarella cheese, and tomato sauce

Margherita 15
Tomato, basil, fresh mozzarella



Burgers & Sandwiches

Served with choice of french fries or curly fries

- | | |
|--|--|
|  Famous Spitfire 11.49
1/3lb Angus beef patty, bacon, fresh Maui Gold Pineapple, cheddar cheese, onion, tomato, lettuce |  Spitfire Chicken Sandwich 6.99
Breaded and seasoned chicken breast, pickles, and our special savory sauce on a brioche bun |
| Bacon Cheeseburger Deluxe 11.49
1/3lb Angus beef patty, Cheddar cheese, bacon, tomatoes, and lettuce |  French Dip 12.49
Roast beef, Provolone cheese, Au Jus served on a Hoagie Roll |
| Beyond Burger 12.99
Plant-based vegan burger patty, swiss cheese, lettuce, tomato, red onion, avocado, and honey sriracha aioli on a brioche bun | Cheesesteak 10.99
Roast beef, provolone cheese, bell pepper, mushrooms, onion, mayonnaise on a Hoagie Roll |
| Swiss Mushroom 11.99
1/3lb Angus beef patty, Swiss cheese, sliced mushrooms, tomatoes, lettuce | Hot Pastrami 14.99
Pastrami, Swiss cheese, cole slaw, kosher dill pickle, Ancho Chile Aioli |
| Paniolo Burger 11.99
Angus beef patty, Swiss cheese, BBQ sauce, bacon, onion rings, lettuce, tomato, onion | BBQ Pulled Pork 10.99
Kalua pork, Provolone cheese, cole slaw, BBQ sauce |
| Kunoa Burger 7.99
1/4lb all natural beef patty, cheddar cheese, lettuce, tomatoes, red onion, sliced dill pickles on a bakery fresh bun | |



= **Staff Pick**



10% OFF ALL TAKEOUT ORDERS

Aloha!
E Komo Mai!



bills
SYDNEY

bills hawaii
is an award-
winning farm-
to-table,
casual eatery.

please join us
for breakfast,
lunch or just
a snack or
cocktail.

we look
forward to
serving you!



**MAHALO NUI
FOR YOUR
SUPPORT!**

Due to overwhelming
response, we are
extending our

KAMA'ĀINA SPECIAL
25% OFF
FOOD & DRINKS

THRU 7/31/20
with valid local i.d.
(except specials)

KAMA'ĀINA PARKING
2 hours free validated parking
at the bank of hawaii bldg
(see map at right)



bills hawaii
280 beachwalk
2nd level

temp. hours:
thurs-mon
8am-2pm
(closed tues/wed)

billshawaii.com
808.922.1500



HAWAII CONVENTION CENTER

HAWAII CONVENTION CENTER CONTINUES TO SERVE COMMUNITY AS LOCATION FOR HAWAII UNEMPLOYMENT AND ELECTIONS SERVICES

While the Hawai'i Convention Center remains closed to the public following State of Hawai'i COVID-19 pandemic restrictions, it is working with state agencies to provide space for important services such as unemployment claims processing and vote counting.

From July through November the State of Hawai'i's Office of Elections will use a portion of the Center's exhibit hall space as a temporary vote counting center, with more than 200 volunteers and staff expected to participate.

"Our ballroom and exhibit halls provide ample space to follow social distancing measures recommended by the CDC to ensure the health and safety of our guests and employees," said Teri Orton, general manager of the Hawai'i Convention Center, managed by ASM Global. "While all public events previously scheduled during this time are either postponed or cancelled, we are pleased to continue to serve Hawai'i."

Since April the Hawai'i Convention Center has served as a temporary satellite location for the Hawai'i Department of Labor and Industrial Relations to process unemployment insurance claims. While this location is not open to the public, volunteer personnel and staff are using socially distanced workstations to process a record number of unemployment claims.

The Center is also conducting improvements, repairs and upgrades throughout the building, allowing for the expedited completion of maintenance projects and the implementation of new safety protocols without disrupting meetings and events.

The health and safety of guests and employees are the Center's top priority. The Center has developed safety guidelines and protocols in response to COVID-19 and continues to follow the guidance of public health officials.

Updates will be posted to the Center's schedule at [HawaiiConvention.com](https://www.hawaii-convention.com).

For more information regarding COVID-19, please visit <https://blog.hawaii-convention.com/covid-19-faqs/>.

UPCOMING EVENTS

The Hawai'i Convention Center continues to follow State of Hawai'i restrictions to help prevent the spread of COVID-19, remaining closed since March 18, 2020.

All public events previously scheduled during this time are either postponed or cancelled.

The health and safety of our guests and staff are our top priority, and we will post updates to our events calendar at [HawaiiConvention.com](https://www.hawaii-convention.com).



 @HawaiiConventionCenter

 @HIConventionCtr

 @HawaiiConventionCenter



Open for Dine-in & Take-Out

BREAKFAST 8:00-11:30am

LUNCH 11:30am-4:30pm

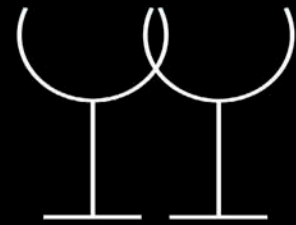
DINNER 5:00-10:00pm



From a delightful, complete breakfast menu to an authentic Italian lunch and dinner featuring fresh, local produce, the highest quality imported ingredients, fresh pasta made in-house daily, and an award-winning wine list, Il Lupino offers our guests the finest dining experience in Waikiki!



Wine Spectator



BEST OF AWARD OF EXCELLENCE



IL LUPINO

TRATTORIA & WINE BAR

Royal Hawaiian Center
Bldg B, Level 1
3 Hours Free Validated Parking

808.922.3400

illupino.com





acai bowl



shave ice



100% kona coffee

Aloha! We Are Open!

IVC: Daily 6:00am - 10:00pm

IVWB: Daily 7:30am - 10:00pm

IVSI: Daily 10:00am - 10:00pm



wagyu burger



cheese & fruit plate

Enjoy our delicious, fresh, farm-to-table food, shave ice, juices, teas and 100% Kona Coffee drinks all day long, dine-in or take-out - and pick up the highest quality locally-sourced organic & natural products to take home, plus Kona Coffee-dyed t-shirts, tote bags, and our popular logo Hydro Flasks®.



poke bowl



steamed clams



award-winning wine list

Island Vintage Wine Bar offers an amazing menu and an award-winning wine list featuring classics to rare offerings. Meet Wine Director Mark Cartland (at right) and ask him all your wine questions. Please check out @IslandVintageWineBar for Mark's @IslandWineTime videos and our weekly specials & events. We also carry local beers, cider, sake, and a full bar. Visit us today - Cheers!



Mark Cartland



papaya & prosciutto



poke bites



burrata



pork belly

Royal Hawaiian Center • Bldg C, Level 2 • 3 hours free parking through 7/31/20

islandvintagecoffee.com • islandvintagewinebar.com •





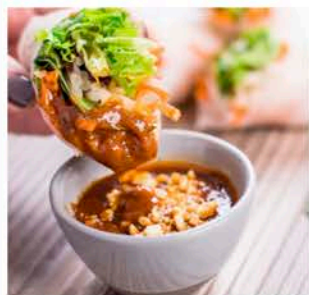
NOI
THAI
CUISINE

**3 HOURS
FREE PARKING**
**20% OFF
REGULAR MENU
FOR KAMA'ĀINA**

Award-Winning Thai Cuisine

LUNCH 11AM-3PM • HAPPY HOUR 3-6PM • DINNER 5-9PM
808-664-4039 • noithaicuisine.com • [@noithaicuisine_hawaii](https://www.instagram.com/noithaicuisine_hawaii)

Enjoy award-winning Thai cuisine, a beautiful atmosphere, and friendly service in the heart of Waikiki.



APPETIZERS • SOUPS • SALADS • SATAY • A WIDE ARRAY OF POPULAR ENTREES • A VARIETY OF CURRIES



NOI SIGNATURE DISHES • RICE DISHES • NOODLES • VEGETARIAN MENU • SET MENUS • DESSERTS • FULL BAR

\$20 TO-GO BENTOS

Our take-out bentos were so popular we decided to keep them on the menu!
We also have 14 different \$10 to-go bentos, too! Just call us for menu or order at noithaicuisine.com.



- #1 - Crispy Garlic Chicken Pad Thai
- #2 - Cashew Chicken Thai Basil Stir-Fry (chicken, pork or tofu)



- #3 - Green Beans (chicken, pork or tofu) Eggplant (chicken, pork or tofu)
- #4 - Eggplant Tofu Vegetarian Pad Thai

\$20 Bentos come with Spring Rolls & Jasmine Rice.

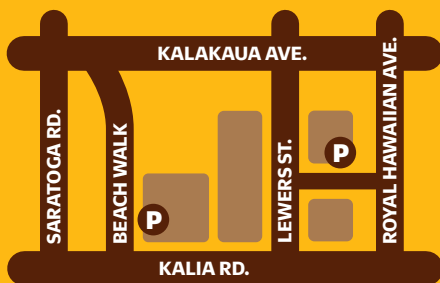
Royal Hawaiian Center • Building C, Level 3 • Validated Parking
Private Rooms • Events (up to 200 guests) • Catering • Gift Cards



PARK FREE!

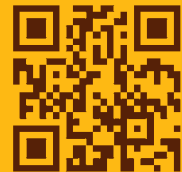
with validation through July 31, 2020

Enjoy complimentary parking with any purchase at Waikiki Beach Walk®.



P – PARKING LOCATIONS

Validated valet parking located at Embassy Suites Porté Cochère or Wyndham Vacation Destinations.



For more parking info scan code or go online to www.waikikibeachwalk.com/parking.htm

Located on Lewers Street between Kalakaua Avenue & Kalia Road
Open 365 Days | 10AM-10PM

WAIKIKIBEACHWALK.COM |   



WAIKIKI
BEACH WALK.

REDISCOVER WAIKĪKĪ THIS SUMMER WITH ROYAL HAWAIIAN CENTER



As Waikīkī stirs back to life this summer, it's the perfect time for kama'āina to re-experience the magic of this world-renowned stretch of shore and head to Royal Hawaiian Center to savor the of sights and flavors the season!

Through July 31, take advantage of The Center's incredible parking program to shop, sip, snack, and surf the day away with **3 free hours of validated parking** with ANY purchase from our shops and restaurants. For



early risers, fuel up with your favorite morning beverage from **Starbucks** (Building A, Level 1) or **Island Vintage Café** (Building B, Level 2). For your stroll along the sunny streets, pick up water and healthy munchies to enjoy along the route at the **ABC Store** (Building B, Level 1), where you can also pick-up the latest fashion accessory – facemasks at just 2 for \$14. Indulge in your favorite brunch bites at **Il Lupino** (Building B, Level 1) or **Wolfgang's Steakhouse** (Building C, Level 3). For your post-surf or swim cool down, pick-up a sweet treat from **Banan** (Building C, Level 1), **Hawaiian Cane Juice** (Building A, Level 1), or **Kokoro Café** (Pa'ina Lanai, Building B, Level 2).



Be sure to stop by The Royal Grove to take in our annual 4th of July décor. Celebrate the spirit of independence under the giant stars strewn throughout the iconic banyan tree and 3rd floor lanai.



New Sunday Royal Market at The Royal Grove

Sundays are extra special with our new Royal Sunday Market! From 8:00 a.m. to 12:00 p.m., guests can shop for locally-made specialty products and tasty delights from participating vendors. Get the royal treatment with a unique keepsake or new foodie find, while supporting our local small businesses and entrepreneurs.

REDISCOVER WAIKĪKĪ THIS SUMMER WITH ROYAL HAWAIIAN CENTER



Get your slippers beach-ready, because Royal Hawaiian Center has your summer wardrobe covered! At **Gillia** (Building B, Level 1), you'll find an array of swimsuits for hitting the surf or poolside lounging, as well as stylish summer dresses and linen pieces perfect for staying cool while looking hot! Find your street style at **Stüssy Honolulu** (Building B, Level 1) with its surf and skater subculture vibe. Keep keiki clad in the softest garments with hand-drawn illustrations at **Kira x Miffy** (Building B, Level 1), and be sure to check out their Hawai'i-exclusive collection!

For the latest list of open stores and restaurants and operating hours, visit: RoyalHawaiianCenter.com/Open-Stores-and-Restaurants.

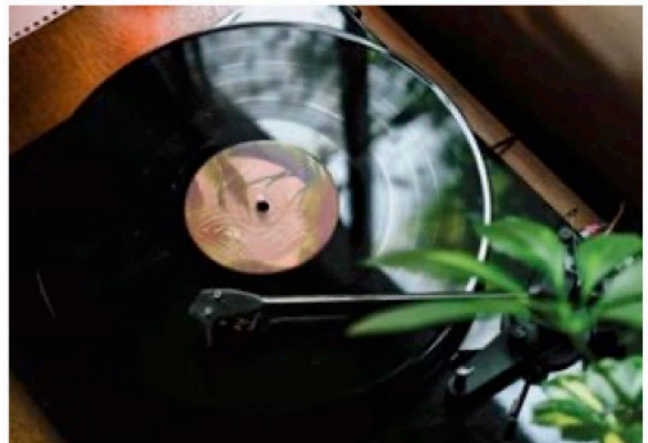


Listen to the sounds of a Hawaiian summer with **R Magazine's On Royal Repeat playlist**. Let the voices of local legends including Bobby Ingho, Typical Hawaiians, Israel Kamakawiwo'ole whisk you away to the shores of Waikīkī, while the sunny songs from Harry Styles, Childish Gambino, and Rusted Root keep you and your slippers dancing down the beach all day. bit.ly/OnRoyalRepeat



Read R Magazine From Anywhere in the World

While there may be changes happening at The Center, we continue to share the beauty of Hawai'i, its culture, and its music with you virtually—starting with our **first digital-only issue of R Magazine**. From hot summer fashion and sounds to unique flavors and history, every page has been specially created to transport readers to paradise at Royal Hawaiian Center. Find inspiration for a summer full of style, delicious memories, and aloha in the pages of R Magazine!



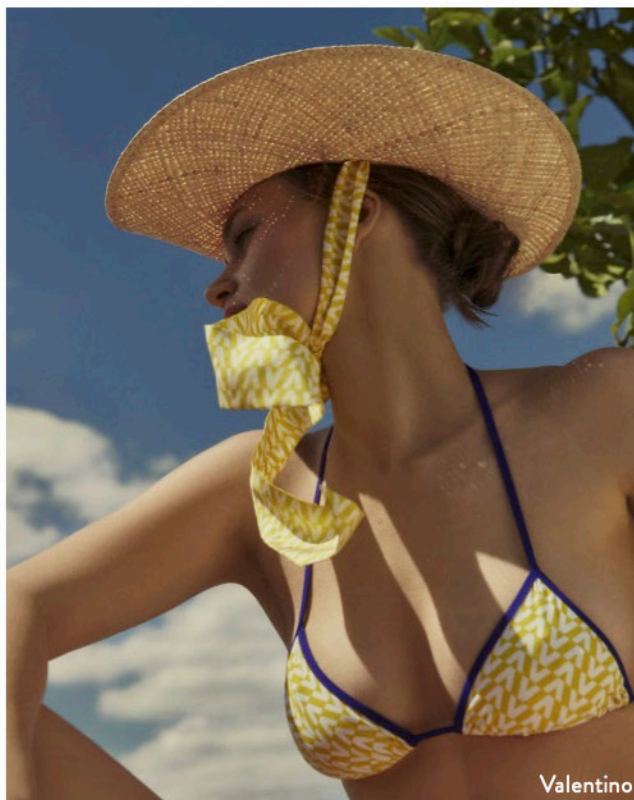
REDISCOVER WAIKĪKĪ THIS SUMMER WITH ROYAL HAWAIIAN CENTER



The Valentino Escape Capsule from the Fall 20 collection, draws inspiration once again from the archives, rooted in the mind-set of the Maison with prints from the '70s. Light textures, merged with logoeed motifs, in a vibrant color palette, crosses hedonistic items such as bathing suits, ethereal dresses and scarves.

Pierpaolo Piccioli continues his search of the elsewhere: this time it being an elegant journey that sees nature as its destination. Color, design and delicacy are the elements of a frivolity created for different personalities that cherish an imaginary bound to freedom, fantasy and the optimism that is behind the getaway from everyday life.

A romantic atmosphere permeates the Valentino Escape Collection: dresses, tops, shorts and beachwear as well as accessories such as sandals, bags, pillows and beach towels convey liveliness and indulgence.



Valentino



Valentino



Valentino

Park & Go Reserved Parking

We've made it easier and more convenient for guests to shop and dine with their favorite Royal Hawaiian Center merchants with our new **Reserved Park & Go stalls on Level 3** of our parking garage. Got a phone or online purchase to pick-up? Participating stores will deliver it right to your car! Want a quick bite to go from the Pa'ina Lanai without the stress of finding parking? Pull up to a reserved stall, grab your order from the food court, and head right back out! Just remember to get your validation sticker and you'll be good to go.



**CURBSIDE
CUSTOMER
PICK UP**



TANAKA of TOKYO

JAPANESE STEAK & SEAFOOD



“Hawaii’s Best Japanese Teppanyaki Steakhouse”

- Honolulu Star Advertiser -

“Best Japanese Restaurant in Hawaii”

- Honolulu Magazine -

“The Best Teppan Room Anywhere”

- Zagat Guide -

“The Best Kids Menu in American Contest Winner”

- Restaurant Hospitality Magazine -

“One of the 10 Best Japanese Restaurants in the U.S.”

- Five Star Diamond Award -

“Customer safety is our number one priority and our team is continuously working hard to ensure that all Restaurant Reopening Guidelines established by the City and County of Honolulu are being followed meticulously! Additionally, we are excited to share that Tanaka of Tokyo is one of the safest restaurants to dine in due to our extensive ventilation system which exhausts and exchanges dining room air every 2 minutes – almost as good as dining outside!!! The power of our exhaust fans with ducts above each cooking station provides a combined 27,000 CFM of exhaust air while fresh air is being drawn in at a rate 15 times more than Department of Health Standards!”

Take-out 12:00 p.m. Dinner 5:00 p.m.

Ala Moana Center, Upper Level 4,

Ho’okipa Terrace

Tel 945-3443

www.tanakaoftokyo.com



DINE-IN OR
TAKE-OUT
3 HOURS of FREE
PARKING!



WOLFGANG'S
STEAKHOUSE

BY WOLFGANG ZWIENER



loco moco bento \$15.95



hawaiian sirloin bento \$22.95



salmon bento \$18.95

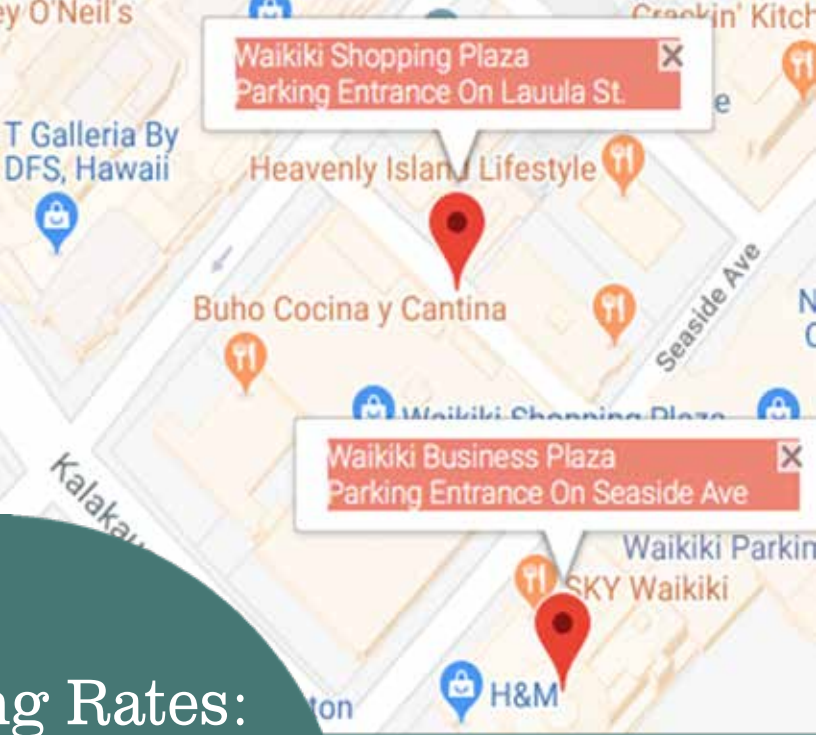
Despite a temporary relocation, Wolfgang's Steakhouse by Wolfgang Zwiener continues to offer our legendary USDA Prime steaks, fresh seafood, and a delicious array of soups, salads, sandwiches, sides and decadent desserts for dine-in or take-out, from 8:00am-10:00pm daily. And try our to-go bentos, served with sides and tiramisu for dessert, at a great price point. These were so popular during the shutdown, we decided to keep them on our take-out menu! And yes, we still have our super popular \$12.95 lunch specials! We are so grateful for your patronage throughout the year, and especially during these challenging times. Mahalo nui loa from all of the Wolfgang's Steakhouse 'ohana. We look forward to serving you soon!

WE ARE CURRENTLY UNDER RENOVATION AND TEMPORARILY LOCATED AT:

IL LUPINO TRATTORIA & WINE BAR • OPEN DAILY 8:00AM - 10:00PM

Royal Hawaiian Center • Bldg B, Level 1 • wolfgangsteakhouse.net

808.922.3600 • opentable.com



Reopening Rates:

\$5 & \$10 FLAT RATES

Available Daily

\$5 & \$10 FLAT RATES:

Available in the Waikiki Business Plaza & Waikiki Shopping Plaza.

\$5 FLAT RATE:

Park for any 5 hours during parking lot operating hours for only \$5.

\$10 FLAT RATE:

Park for any 10 hours during parking lot operating hours for only \$10.

Valid during parking lot operating hours: waikikishoppingplaza.com/parking

\$3.00 per half hour before and after flat rate, no validations can be applied.

No overnight parking. Cars left in the lot after closing are subject to tow.



W A I K I K I
B U S I N E S S
P L A Z A

the
Waikiki
S H O P P I N G P L A Z A

Pivot Towards New Customer Relationships



The impact of Covid-19 requires reaching out to wider audiences including residents and post-arrival visitors. We ensure your restaurant, retail store or activities get seen and purchased.

HARRIS HAWAII MARKETING GROUP
est. 2004



Marketing & Communications Agency



FOOD GURUS

Food & Beverage Marketing Specialists



Digital Optimization

Contact Jana Soli at janas@harris-agency.com -or- (808) 946-4525

2250 Kalakaua Ave, Honolulu, HI 96815 | HARRIS-AGENCY.com





WAIKĪKĪ IMPROVEMENT ASSOCIATION

Wikiwiki Wire **GUIDELINES**

Wikiwiki Wire is published on the first Friday of each month. If you would like to share your news with other members, please send your info to: editor@waikikiimprovement.com.

Submission Deadline

Waikīkī-related news and information submitted by members (or their PR agencies) for the Wikiwiki Wire newsletter should be received no later than **5 PM THURSDAY, ONE WEEK PRIOR** to the newsletter's publication and distribution on the first Friday of each month.

News & Stories: Please submit any Waikīkī-related stories/articles as a Word doc and include photos to accompany stories/ articles. For best results, please upload photos as a separate JPEG attachment - maximum 2 MB each image.

Flyers/PDFs: Waikīkī-related flyers are welcome but must look like advertising flyers and not press releases. Please format flyers to an 8.5" x 11" size and submit them in a PDF format.

Press Releases: Please submit Waikīkī-related press releases as a Word doc. Press Releases that do not fit within one page of the Wikiwiki Wire newsletter will be returned for editing.

Photos: For best results, please upload photos as a separate JPEG attachment - maximum 2 MB each image.



WAIKĪKĪ IMPROVEMENT ASSOCIATION

We are a cross-section of business, government and the community; our members care about the future of this special place - Waikīkī.

For more than 40 years, the Waikiki Improvement Association has remained true to its objective: to improve, enrich and beautify Waikīkī for the benefit of residents and visitors alike and to promote conditions conducive to the economic and cultural good and for the betterment of the entire community.

HAWAIIAN DIACRITICAL MARKS

Waikīkī Improvement Association recognizes the use of diacritical marks (i.e., glottal stop (ʻ), macron (ā) in place names of Hawaiʻi, such as Waikīkī and Kalākaua Avenue and will include them whenever possible. We also respect the individual use (or not) of these markings for names of organizations and businesses.

There will also be times when we may not have a chance to add or change the markings in all of the articles submitted and when that happens, e kala mai.