



WAIKĪKĪ IMPROVEMENT ASSOCIATION

Wikiwiki Wire

E-newsletter keeping you up-to-date on Waikīkī news, features, trends and more!



Contents

4

**ALA WAI WATERSHED
MANAGEMENT PLAN KICKS OFF
WITH A FEDERAL GRANT**

5

**ALOHA FESTIVALS: NĀ MELE
'UKULELE**

7

**ALA WAI BOAT HARBOR GETS
CLEAN UP HELP**

8

ARBOR CLEAN UP ADVANCES

9

**WAIKĪKĪ BEACH HULA SHOW -
SUSPENSION EXTENDED**

10

**WAIKĪKĪ STREET ACTIVITIES
CANCELLED UNTIL FURTHER
NOTICE**



MORE WAIKĪKĪ FOOD, NEWS & EVENTS

'ALOHILANI RESORT WAIKIKI BEACH
REOPENS WITH EXCLUSIVE KAMA'AINA
PACKAGE

KĀNEKAPŌLEI COLLECTION - BRAND
NEW RENTALS IN WAIKĪKĪ

BASALT TAKE OUT ONLY - ONLINE
ORDERS & CURBSIDE PICK UP AVAILABLE

BILLS OPEN FOR TAKE OUT WITH
KAMA'AINA SPECIALS

TANAKA OF TOKYO TAKE OUT

HAWAI'I CONVENTION CENTER
IMPLEMENTS COVID-19 HEALTH AND
SAFETY PROGRAM

IL LUPINO OPEN FOR TAKE OUT AND
DELIVERY

ISLAND VINTAGE COFFEE, ISLAND
VINTAGE WINE BAR, & ISLAND VINTAGE
SHAVE ICE TO GO

NOI THAI CUISINE - TAKE-OUT/CURBSIDE
PICK-UP/DELIVERY - \$20 DELUXE BENTOS;
\$10 BENTOS

ROYAL HAWAIIAN CENTER - ORDER THE
ALOHA SPIRIT TO GO & A SEPTEMBER TO
REMEMBER

WOLFGANG'S STEAKHOUSE

HARRIS HAWAI'I MARKETING GROUP



Ala Wai Watershed Management Plan Kicks Off With A Federal Grant

The WBSIDA Is Planning Future Watershed Improvement Projects

The Department of the Interior, Bureau of Land Management is providing \$100,000 in federal grant money to match \$100,000 from the Waikīki Beach Special Improvement District Association (WBSIDA) to support a watershed management plan for the Ala Wai. The WBSIDA is supporting the Ala Wai watershed management project in partnership Hawai'i Green Growth and the Ala Wai Watershed Collaboration (AWWC). The federal funds are being granted to Hawai'i Green Growth through the O'ahu Economic Development Board for a two-year effort that includes a technical and economic feasibility analysis for watershed management projects in the Ala Wai Watershed.



The project will conduct feasibility analysis for a series of priority projects in support of a Holistic Watershed Management Plan. The project includes both an inclusive and stakeholder-driven process as well as rigorous technical and feasibility analysis to address critical water quality issues and vulnerabilities for the Ala Wai Watershed, Hawai'i's most densely populated and economically significant watershed. This project will complement but is separate from the proposed Army Corps of Engineers Ala Wai Flood Mitigation project.

The AWWC is an existing watershed group with over 100 individuals from 65 organizations who represent affected stakeholders and sectors across all geographic areas from the mountains to



the ocean. Over the past 4 years, the AWWC has built a structure of quarterly meetings and Working Groups, who identified six priority issues (see below) and a list of potential solutions, projects, and programs that could address these issues.

Aloha Festivals: Nā Mele 'Ukulele



Aloha Festivals is proud to present Aloha Festivals: Nā Mele 'Ukulele, a special 30-minute broadcast that will air Thursday, Sept. 24, 2020 at 9:30 p.m. on KHON2, online at KHON2.com and on KHON2's YouTube channel and Facebook. The special will also be livestreamed on the Aloha Festivals website and will rebroadcast on Saturday, Sept. 26 at 6:30 p.m. and Sunday, Sept. 27 at 8 p.m. on KHON2, and Sunday Oct. 4 at 8 p.m. on KHII.

The festivals have partnered with KHON2 to produce and air special programming celebrating the legacy of Aloha Festivals including its cultural traditions and performances from local artists. In line with the 2020 Aloha Festivals theme "Nā Mele 'Ukulele – E Ho'okani Pila Pū Kākou" or "Songs of the 'Ukulele – Let's Make Music Together," the special broadcast will feature 'ukulele artists Pomaika'i Lyman, Jake Shimabukuro, and Kawika Trask.





Musician and falsetto singer Pōmaika'i Lyman is a frequent favorite on the Aloha Festivals stage, and an artist with a deep heritage within Hawaiian music. Lyman's performance in Aloha Festivals: Nā Mele 'Ukulele will be presented by Hyatt Regency, ABC Stores, Honolulu Festivals and Honolulu Cookie Co.



Presented by Royal Hawaiian Center, 'ukulele phenom Jake Shimabukuro will take the stage for an exclusive performance. While his swift fret work and combination of jazz, rock, funk and other styles have allowed him to tour the world, Shimabukuro's roots remain firmly in Hawai'i where he grew as a player immersed in the traditional styles of Hawaiian music.



Finally, Hawaiian Airlines will present a classic performance by Kawika Trask. The 'ukulele performances of Trask have been a staple in the traditional Hawaiian music scene and in Waikīkī for more than 30 years. With a style that is both classic and contemporary, Trask leads the Hawaiian Airlines Serenaders, a role that has allowed him to share the beauty of Hawaiian music and hula with audiences all over the world.

In addition, KHON2 is also including the Aloha Festivals theme in its original programming, including "Aloha Authentic," "Modern Wahine Hawaii," and "Sam Choy in the Kitchen" throughout the month of September. For a list of broadcast dates for these programs and more information about Aloha Festivals: Nā Mele 'Ukulele, visit www.AlohaFestivals.com.

Aloha Festivals' annual, month-long celebration is typically held from late August through September with its three signature events: Royal Court Investiture & Opening Ceremony, Annual Waikīkī Ho'olaule'a, and the Annual Floral Parade. All events have been cancelled in light of ongoing impacts of the COVID-19 pandemic.



Ala Wai Boat Harbor Gets Clean Up Help

Seabin Pilot Project to Keep Marine Debris Out of the Ocean

In July 2019, the Department of Natural Land and Resources (DLNR) approved a six-month trial of the Seabin Project to help clean up trash at the Ala Wai Boat Harbor. The Seabin, developed in Australia, is essentially a cross between a rubbish bin and a pool skimmer. The idea was, if there are rubbish bins on land, why not in the water? The Seabin is a revolution in ocean cleaning technology, helping to create cleaner oceans with healthier marine life. The smart tech application is being sponsored in Hawaii thanks to Hawaii Volcanic Water.

The Seabin Project launched in Hawaii this August with two new trash collecting bins that have been installed at the Ala Wai Harbor across from the Prince Hotel. The ultimate goal is to have Ala Wai Boat Harbor pollution free.

The Seabin sits mounted to a pontoon, slightly below the surface of the water. It sucks the water through and out the bottom while catching debris, from big pieces of trash to microplastics along the way. The Seabin can filter 600,000 liters per day. Twice a day, Fernando Torres of Green Man Hawaii empties out the bins. DLNR and Seabins Hawaii will evaluate its effectiveness after the trial period. If you would like to donate to install more seabins or for more information, please go to www.seabinsforhawaii.com.



Arbor Clean-Up Advances

WAIKĪKĪ – The City has made another move to secure and clean-up the Kūhiō Beach pavilions. The pavilions, also known as Hau Arbors, was once a place where chess, checkers and cribbage players planted themselves daily from early morning to late into the evening. It was a great spot for passers-by to stop and enjoy the incredible ocean views or watch the sunset. In recent years those days seem long gone and impossible to retrieve. The Hau Arbor pavilions have become a sanitation, safety and security concern for all who stroll down Kalākaua Ave.



Last year as part of a plan to improve the area, the City leased out two of the four pavilions. Rick Egged, President of the Waikiki Improvement Association, says he encouraged the City to move as quickly as possible to lease out the pavilions. “I would love to see the old days come back, but I don’t see how that could happen,” he says. “The days of chess and checkers and old folks enjoying the scenery are gone. If the pavilions are left empty, they will fill up with people engaged in undesirable activities.” The second part of the City’s security improvements outlined by Mayor Caldwell was to enclose and secure the pavilions. Primatch Construction was awarded the \$ 248,000 contract and they have already installed security doors at all four pavilions. The month-long installation project was completed mid-August. The accordion-type doors are made of anodized black aluminum alloy and stainless steel, intended to withstand the corrosive conditions of this shoreline environment.

In February 2019, Mayor Caldwell announced several planned security improvements for Waikīkī. Since then, the concrete benches/walls in problem areas were removed, surveillance cameras have been and continue to be installed and bids for concessionaires to occupy the vacant pavilions were drafted. The City is looking for two additional concessionaires for the remaining open leases.

“Local families have recently been able to enjoy a less-crowded Waikīkī,” said Mayor Caldwell. “As a result of the COVID-19 pandemic, we’ve noticed more people out walking, jogging, biking and rediscovering the nearby beaches. As part of this overall safety package, these security improvements will hopefully create a more welcoming environment to make sure these public areas are used well and are not havens for illegal activity.”

Kūhiō Beach will benefit from leasing out the remaining two pavilions. The Waikīkī Improvement Association strongly supports the City to create a public private a partnership to activate and care for this important area of our beachfront.

Waikiki Beach Hula Show

AT THE KUHIO BEACH HULA MOUND

KUHIO BEACH HULA SHOW

THE KUHIO BEACH HULA SHOWS ARE SUSPENDED UNTIL FURTHER NOTICE, ON ADVICE OF THE HAWAII STATE HEALTH DEPARTMENT AND THE MAYOR'S OFFICE OF THE CITY AND COUNTY OF HONOLULU, FOR PUBLIC HEALTH AND SAFETY DUE TO THE CORONAVIRUS PANDEMIC.

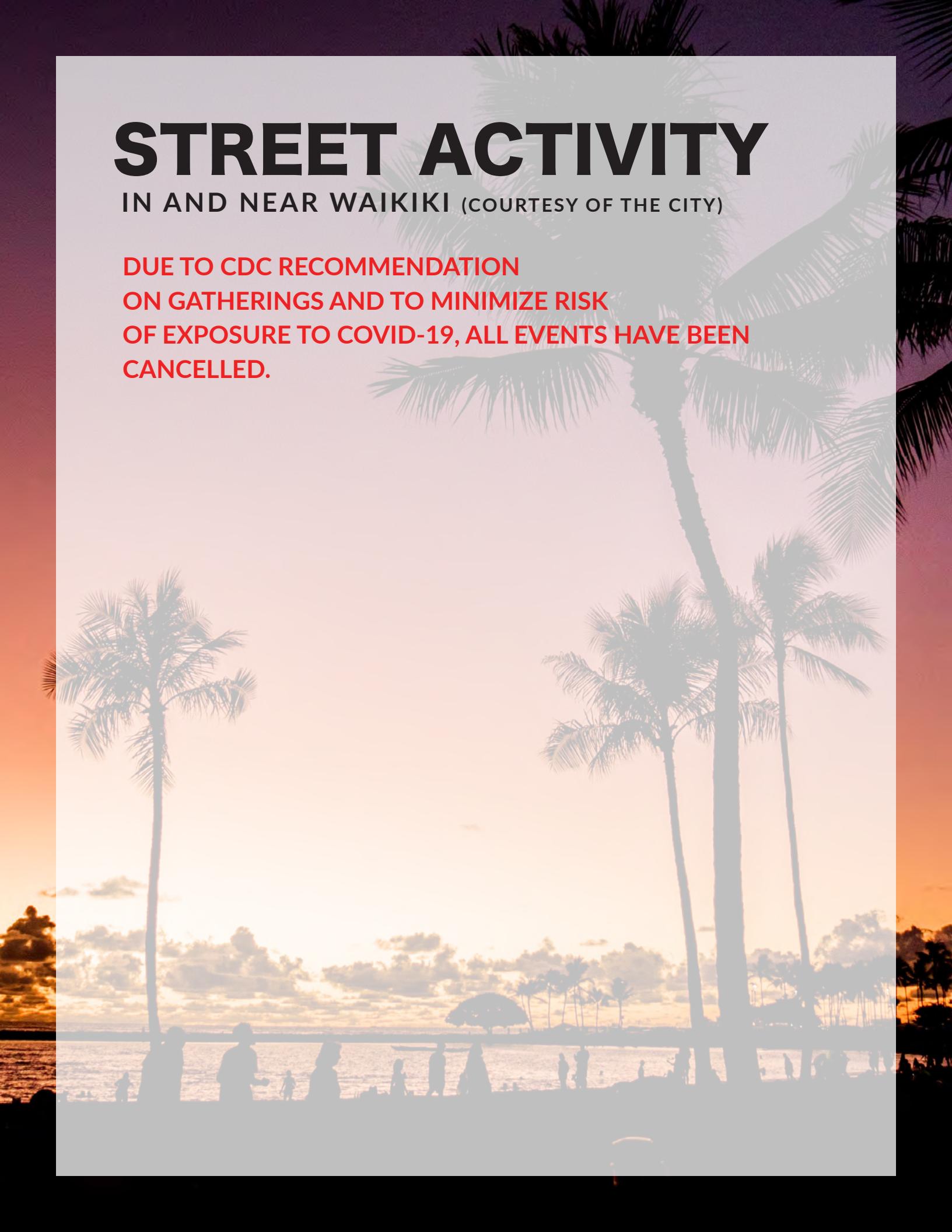
The Kuhio Beach Hula Show is held regularly Tues-Thur-Sat 6:30-7:30 PM at the Kuhio Beach Hula Mound.



STREET ACTIVITY

IN AND NEAR WAIKIKI (COURTESY OF THE CITY)

**DUE TO CDC RECOMMENDATION
ON GATHERINGS AND TO MINIMIZE RISK
OF EXPOSURE TO COVID-19, ALL EVENTS HAVE BEEN
CANCELLED.**





'ALOHILANI RESORT WAIKIKI BEACH, OAHU'S AWARD-WINNING BEACHSIDE RESORT, REOPENS WITH EXCLUSIVE KAMA'AINA PACKAGE

The modern oasis offers extensive safety protocols and campaign to support the local community.

Recently named Among the Top 20 Resorts in Hawaii by Travel + Leisure World's Best, 'Alohilani Resort Waikiki Beach welcomes Hawaii residents with the "LOVE HAWAII" campaign, a partnership with Hawaiian Airlines and local nonprofits, including the American Heart Association, Make-A-Wish Foundation, March of Dimes, and Susan G. Komen Hawaii. For each night booked, 'Alohilani Resort will donate \$10 per night directly to one of the four partner nonprofit organizations providing critical support and care for the local community.

Ideal for families, couples and friends, 'Alohilani encourages Hawaii residents to "STAY LOCAL and SUPPORT THE COMMUNITY." The Love Hawaii special kama'aina-only offer includes complimentary parking, waived resort amenity fees, 500 HawaiianMiles per night, and early check-in and late check-out. Rates start at \$189.00 per night for travel now through December 23, 2020.*

'Alohilani offers a refreshing balance of energy and relaxation. Lively and sophisticated, the acclaimed resort features a captivating 280,000-gallon Oceanarium teeming with Hawaiian marine life, an Instagram-worthy saltwater infinity pool overlooking the Pacific, dining by world-renowned Iron Chef Masaharu Morimoto and guestrooms with modern amenities; light-filled and contemporary accommodations with unrivaled views of Diamond Head and the Pacific Ocean. To book the Love Hawaii package and unlock your Waikiki staycation experience: <https://www.alohilaniresort.com/special-offers/kamaaina/> * Valid Hawaii Resident I.D. required upon check-in, blackout dates may apply.

BE WELL. STAY WELL.

The resort is proud to safely re-open with an enhanced commitment to its guests' safety and well-being. Travel may look different for a while, but 'Alohilani's vision remains the same—to deliver the highest level of hospitality.

This includes reconfigured floor plans in all public spaces, monitoring of spacing and capacity, touch-less hand sanitizer stations and personal protective gear for all team members. Plexiglas barriers safeguard the front desk and all counter-to-guest interactions. Regular training on the latest safety and cleanliness procedures are in place and will continue and evolve with CDC and WHO recommendations.

[Learn more about 'Alohilani's Cleaning & Safety Protocols here.](#)

KĀNEKAPŌLEI

collection

BRAND NEW RENTALS IN WAIKĪKĪ

ONE-BEDROOM UNITS = \$1,483 MONTHLY RENT

TWO-BEDROOM UNITS = \$1,945 MONTHLY RENT

80% AMI

Income restrictions apply

MOVE-IN FALL 2020

DON'T MISS THIS OPPORTUNITY
APPLY NOW

A place to call home, in the heart of Waikiki. Kanekapolei Collection will feature 53 newly renovated, affordable rentals featuring new appliances, luxury vinyl flooring, A/C throughout and spacious lanais. Waikiki living at its finest, near world-class beaches, dining, entertainment, shopping and nightlife.

Follow Us:

 @liliawaikiki

#cultivatethelifeyoulove

#brookfieldpropertieshawaii

KanekapoleiCollection.com



TAKE OUT ONLY

Online Ordering &
Curbside Pick Up Available

10% OFF ALL ORDERS

Enter promo code **BASALT10**
for online orders at basaltwaikiki.com

BASALT

AT DUKES LANE MARKET & EATERY

MONDAY TO FRIDAY 11 AM — 7 PM
SATURDAY & SUNDAY 8 AM — 7 PM

BASALT

breakfast

10% OFF ALL ORDERS
Use promo code **BASALT10** at basaltwaikiki.com

TAKE OUT ONLY

SATURDAY & SUNDAY 8 AM – 1 PM

B Charcoal Buttermilk Pancakes	13
Guava-strawberry sauce, whipped cream, mixed fresh berries	
B Avocado Garden Toast	12
Grilled wheat bread, cherry tomato, micro greens, watermelon radish, pumpkin seeds	
Add Poached Egg (+\$3)	
Oatmeal	8
Steel cut oats, almond milk, fresh berries	
Lox & Bagel	13
Smoked salmon, cream cheese, capers, onion, toasted bagel	

breakfast plates

Includes fruit garnish, house made jam and choice of toast: White, Wheat, or English Muffin

Basalt Breakfast	15
Two large eggs any style, country style potatoes. Choice of Applewood smoked bacon, Portuguese sausage, or link sausage	
Loco Moco	14
Wagyu beef patty, bacon fried rice, mushroom gravy, grilled onion, sunny-side up egg	
Pork Belly Fried Rice	12
Bacon fried rice, roast pork belly, two fried eggs	
Vegetable & Feta Omelet	16
Spinach, tomato, mushroom, onion, bell pepper, country style potatoes	
Meat & Cheese Omelet	16
Bacon, ham, link, and Portuguese sausages, jack and cheddar cheeses, country style potatoes	



ONLINE ORDERING

1. Go to basaltwaikiki.com
2. Click ORDER ONLINE



CURBSIDE PICK UP

- Kalakaua Avenue
- Past Seaside Avenue
- Take immediate left on Duker Lane
- Reach the end of the Lane, just before Kuhio Avenue
- Pick up your order!

All guests are required to have their temperature checked upon entering. Masks will be required for all customers and staff during the take out process. We follow all recommended State of Hawaii, County of Honolulu & CDC guidelines.

B SIGNATURE DISH

GF GLUTEN FREE

Items & prices are subject to change

CONSUMING RAW OR UNDERCOOKED MEATS, POULTRY, SEAFOOD, SHELLFISH OR EGGS MAY INCREASE YOUR RISK OF FOODBORNE ILLNESS

BASALT
AT DUKES LANE MARKET & EATERY

BASALT

all-day
TAKE OUT ONLY

10% OFF ALL ORDERS
Use promo code **BASALT10** at basaltwaikiki.com
SUNDAY TO SATURDAY 11 AM – 7 PM

appetizers


- 13 Adobo Chicken Wings**
Soy-vinegar glaze, garlic chili dipping sauce
- Pork Ribs**
Hoisin BBQ glaze, soy-chili slaw, fried garlic
- Crispy Quinoa Shrimp** 
Toasted quinoa, aji amarillo aioli
- Avocado Crostini**
Focaccia, tomato, radish, feta cheese, pomegranate molasses

salads

- Mixed Greens** 
Mesclun greens, tomatoes, watermelon radish, carrot, cucumbers, coconut balsamic dressing
- Grilled Chicken Salad**
Peruvian spiced natural chicken breast, won bok cabbage, carrots, pear, green onions, cilantro, crispy won ton strips, sweet chili soy dressing
- 13 Fattoush Salad**
Chopped romaine lettuce, tomato, onion, cucumber, radish, bell pepper, flatbread crouton, pomegranate molasses vinaigrette
Add: **Feta Cheese (+\$2), Grilled Chicken Breast (+\$6)**

dinner special

AVAILABLE FROM 3 PM

- 13 Prime Rib**  **27**
Hawaiian Salt and herb crusted, garlic mashed potatoes, vegetable medley, creamed horseradish, au jus

entrées

- Basalt Burger** 17
8oz wagyu beef patty, cheddar cheese, brioche bun, lettuce, tomato, sweet onion, Hawaiian Island dressing, french fries
Add: **Bacon (+\$3), Avocado (+\$2)**
- Chef's Burger** 22
8oz Peruvian spiced wagyu beef patty, crisp onion ring, bacon, cheddar cheese, Asian guacamole, aji amarillo aioli, french fries
- 13 Prime Rib Melt Sandwich** 16
Swiss cheese, caramelized onions, creamed horseradish, au jus, french fries
- 14 Rigatoni Bolognese** 21
Beef ragu, Parmigiano-Reggiano, garlic bread
- 14 Vegetable Linguine** 14
Asparagus, mushrooms, onions, tomato, herbs, parmesan brodo
Add: **Roasted Garlic Shrimp, 5pcs (+\$8)**
- 15 Miso Black Cod** 29
Steamed white rice, vegetable medley, dashi nage
- New York Steak**  26
Garlic mashed potatoes, vegetable medley, Basalt steak sauce
Add: **Roasted Garlic Shrimp, 5pcs (+\$8)**
- 10 Baby Back Pork Ribs** 22
Spicy pineapple slaw, waffle fries, BBQ sauce
Add: **Roasted Garlic Shrimp, 5pcs (+\$8), Grilled Chicken Breast (+\$6)**
- 17**
- 14**

dessert

- 6 Grand Marnier Mousse Cake** 6
Dark chocolate devil's food cake, raspberry sauce, mixed berries
- 6 Guava Lilikoi Cake** 6
Vanilla sponge cake, guava lilikoi mousse, raspberry sauce
- 7 Strawberry Roll** 7
Vanilla sponge cake, whipped cream, fresh strawberries, strawberry guava sauce
- 8 Tiramisu** 8
Espresso lady fingers, kahlua-amaretto mascarpone cream, chocolate espresso streusel



SIGNATURE DISH



GLUTEN FREE

CONSUMING RAW OR UNDERCOOKED MEATS, POULTRY, SEAFOOD, SHELLFISH OR EGGS MAY INCREASE YOUR RISK OF FOODBORNE ILLNESS

Items & prices are subject to change

BASALT
AT DUKES LANE MARKET & EATERY



CURBSIDE PICK UP

ONLINE ORDERING

1. Go to basaltwaikiki.com
2. Click ORDER ONLINE



CURBSIDE PICK UP

- Kalakaua Avenue
- Past Seaside Avenue
- Take immediate left on Dukes Lane
- Reach the end of the Lane, just before Kuhio Avenue
- Pick up your order!

All guests are required to have their temperature checked upon entering. Masks will be required for all customers and staff during the take out process. We follow all recommended State of Hawaii, County of Honolulu & CDC guidelines.

bills
SYDNEY

*We are Open for Take-out!
Mahalo for your order!*

**SEPTEMBER
KAMA'ĀINA
SPECIAL**

**MONDAY - FRIDAY
25% OFF
FOOD & DRINKS**

**SATURDAY & SUNDAY
20% OFF
FOOD & DRINKS**

**THRU 9/30/20
with valid local i.d.
(except specials)**

KAMA'ĀINA PARKING

**2 hours free validated
parking at the bank of
hawaii building
(see map at right)**



bills hawaii
280 beachwalk
2nd level

temp. hours:
8am-2pm
(closed wednesdays)

billshawaii.com
808.922.1500



“Hawaii’s Best Japanese Teppanyaki Steakhouse”

- Honolulu Star Advertiser -

“Best Japanese Restaurant in Hawaii”

- Honolulu Magazine -

“The Best Teppan Room Anywhere”

- Zagat Guide -

“The Best Kids Menu in American Contest Winner”

- Restaurant Hospitality Magazine -

“One of the 10 Best Japanese Restaurants in the U.S.”

- Five Star Diamond Award -

“Customer safety is our number one priority and our team is continuously working hard to ensure that all Restaurant Reopening Guidelines established by the City and County of Honolulu are being followed meticulously! Additionally, we are excited to share that Tanaka of Tokyo is one of the safest restaurants to dine in due to our extensive ventilation system which exhausts and exchanges dining room air every 2 minutes – almost as good as dining outside!!! The power of our exhaust fans with ducts above each cooking station provides a combined 27,000 CFM of exhaust air while fresh air is being drawn in at a rate 15 times more than Department of Health Standards!”

Take-out 12:00 p.m. Dinner 5:00 p.m.

Ala Moana Center, Upper Level 4, Ho’okipa Terrace

Tel 945-3443

www.tanakaoftokyo.com



HAWAII CONVENTION CENTER IMPLEMENTS COVID-19 HEALTH AND SAFETY PROGRAM

The Hawai'i Convention Center has implemented a comprehensive health and safety program developed by leading venue and event management company ASM Global to ensure the highest levels of health and safety for staff, guests and communities.

In compliance with guidelines established by the Centers for Disease Control (CDC) and the State of Hawai'i Department of Health, these extensive measures include enhanced cleaning and sanitation for high-touch surfaces, the use of personal protective equipment (PPE), modified food and beverage operations, the increased availability of hand sanitizer dispensers, contactless transactions, special signage and social distancing markers.

The Center recently installed thermal scanners at several main entrances. In locations where thermal cameras are not available, temporal thermometers will be used. Anyone displaying a temperature over 100.4 degrees F will be taken to a private area for a secondary temperature screening. Employees or guests confirmed to have a temperature over 100.4 degrees will be evaluated by medical personnel.

The Center is also using VenueShield, ASM Global's proprietary environmental hygiene protocol, which is being deployed at more than 325 facilities worldwide. The VenueShield program offers best practices that include state-of-the-art standard operating procedures for environmental hygiene.

While the Center remains closed to the public, it has continued to welcome volunteers and staff from the Office of Elections for vote counting and Department of Labor and Industrial Relations for unemployment claims processing.

Health and Safety Best Practices
The Hawai'i Convention Center is pleased to offer a comprehensive health and safety program that ensures the highest levels of cleanliness and safety for our staff, guests, and communities.

- Enhanced Cleaning & Sanitization:** A designated sanitation team will routinely sanitize high-touch point surfaces with CDC-compliant products.
- Body Temperature Screening:** Our security team will conduct temperature checks upon entry.
- PPE:** Face masks will be required. Guests may bring their own or organizers may provide for attendees.
- Social Distancing:** Guests will be advised to practice social distancing by standing at least 6 feet away from others not traveling with them.
- Hand Sanitizer Dispensers:** Placed at key entrances throughout the facility.
- Shared AV Equipment:** All companies will be required to sanitize shared equipment between each use.
- Special Signage:** Visible throughout the facility to communicate proper hygiene practices, social distancing & instructions for guests who do not feel well.
- Site Inspections:** Virtual site inspections are encouraged. On-site inspections will be conducted with appropriate social distancing.
- Modified Food and Beverage:** Our F&B team will work with organizers to customize menus and service. Only individual pre-packaged items offered. No buffet service.

Please visit our website for updated information pertaining to building protocols and procedures www.hawaiiconvention.com



UPCOMING EVENTS

The Hawai'i Convention Center continues to follow State of Hawai'i restrictions to help prevent the spread of COVID-19, remaining closed since March 18, 2020.

All public events previously scheduled during this time are either postponed or cancelled.

The health and safety of our guests and staff are our top priority, and we will post updates to our events calendar at HawaiiConvention.com.



- @HawaiiConventionCenter
- @HIConventionCtr
- @HawaiiConventionCenter

For more on the Center's new health and safety program, visit <https://blog.hawaiiconvention.com/reopening-protocols-and-guidelines/>



Enjoy one of our 9 artisan thin crust pizzas - including our 3 new signature pizzas - Anchovy Pizza (right), Fig, Artichoke & Gorgonzola Pizza (below), and Calamari Pizza (below right). Ormolto create a custom pizza with your favorite toppings. *Molto Delizioso!!!*



Open for Take-Out & Delivery

SUN-THU 11:00am-10:00pm

FRI/SAT 11:00am-11:30pm

HAPPY HOUR 12:00-6:30pm

Enjoy our authentic Italian lunch and dinner featuring locally-sourced produce, the highest quality imported ingredients, fresh pasta made in-house daily, and an award-winning wine list.

**NOW OFFERING
FLAT RATE
DELIVERY FROM**



Our entire menu can now be delivered to your home for one flat fee - only \$10 for all 968 zip codes and \$15 for all 967 zip codes on O'ahu. Just call us to place your order - and enjoy delivery with *ALOHA!*

IL LUPINO

TRATTORIA & WINE BAR

Royal Hawaiian Center
Bldg B, Level 1
3 Hours Free Validated Parking

808.922.3400

illupino.com





acai bowl



shave ice



100% kona coffee

Temporary
Hours

Aloha & Mahalo!

IVC: Daily 6am-10pm

IVWB: Dine-in closed during Stay-At-Home orders. Please order at Island Vintage Coffee.

IVSI: Mon-Fri 12pm-9pm
Sat 12pm-9pm
Sun 9am-9pm

Check out our yummy VEGAN menu, too!



cheese & fruit plate



steamed clams

Enjoy our world-famous acai bowls, 100% Kona Coffee drinks, and all our delicious, fresh, farm-to-table food, shave ice, juices, teas, smoothies and so much more prepared TO-GO! STOP BY OR CALL 808-926-5662 TO ORDER!!!

SHOP ISLANDVINTAGECOFFEE.COM
NOW OFFERING FREE SHIPPING ON ORDERS OF \$50 OR MORE (WITHIN THE U.S.)



award winning wine list



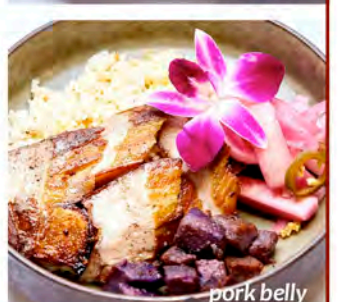
poke bowl



poke bites



burrata



pork belly

Royal Hawaiian Center • Bldg C, Level 2 • 3 hours free parking through 9/30/20

islandvintagecoffee.com • islandvintagewinebar.com •



Now offering delivery by AHP!



FLAT FEE

\$10 for 968 zip codes

\$15 for 967 zip codes



Mahalo Nui for your order & Support!

WE ARE OPEN!!!

OPEN 11AM-8PM • TAKE-OUT/CURBSIDE PICK-UP/DELIVERY
VISIT NOITHAICUISINE.COM FOR OUR COMPLETE MENU
ORDER ONLINE OR CALL 808.664.4039



#1



#2



#3



#4

\$20 DELUXE BENTOS

- #1 - Crispy Garlic Chicken
Pad Thai
- #2 - Cashew Chicken
Thai Basil Stir-Fry (chicken, pork or tofu)
- #3 - Green Beans (chicken, pork or tofu)
Eggplant (chicken, pork or tofu)
- #4 - Eggplant Tofu
Vegetarian Pad Thai

\$20 Bentos come with Spring Rolls & Jasmine Rice.



Pork Jerky



Red Curry



Pad Thai



Crispy Garlic Chicken



Pad See Iew



Pineapple Fried Rice

\$10 BENTOS

- PORK JERKY
- YELLOW CURRY
- RED CURRY
- CRISPY GARLIC CHICKEN
- CASHEW NUT
- NOI SALAD
- SPICY GREEN BEAN
- MIX VEGETABLE DELUXE
- SPICY EGGPLANT
- STIR-FRIED BASIL
- PAD THAI
- DRUNKEN NOODLE
- PAD SEE IEW
- PINEAPPLE FRIED RICE

All \$10 bentos come with choice of chicken, pork or tofu AND jasmine rice.

Extra charge for other meat or seafood, brown rice (+\$2) and sticky rice (+\$4).

Ask us about daily and kama'aina specials. Curbside pick-up next to Cheesecake Factory.
3 hours FREE PARKING at Royal Hawaiian Center. Thank you and BE SAFE!!!

ORDER THE ALOHA SPIRIT TO GO FROM ROYAL HAWAIIAN CENTER RESTAURANTS



Eating in doesn't mean missing out on your favorite dishes from Royal Hawaiian Center's restaurants and eateries! With curbside delivery and take away options, and free Park & Go parking with any purchase, you can still enjoy the 'ono (delicious) flavors they have to offer!

Spend the last days of summer at your favorite shopping and dining spots at Royal Hawaiian Center. With exclusive items, new products, and kama'āina specials, there's always something to discover!

Anteprima Wirebag's (Building B, Level 1) exclusive Hawai'i collection combines high-tech materials and timeless craftsmanship with iconic symbols of the islands. Available only at the Royal Hawaiian Center boutique, these iconic handbags will make a fashionable and stylish statement for summer and beyond. The clutches and handbags are delicately adorned with stones and crystals in pineapple, hibiscus and palm tree motifs. Each luxurious piece is meticulously handcrafted by skillful artisans.

Restaurants

- The Cheesecake Factory
- Il Lupino Trattoria & Wine Bar
- Noi Thai Cuisine
- Restaurant Suntory
- TsuruTonTan Udon Noodle Brasserie
- Wolfgang's Steakhouse

Pā'ina Lānai Food Court

- Curry Cafe
- Kulu Kulu
- Mahaloha Burger
- Pho Factory

Specialty Eateries

- Island Vintage Coffee
- Starbucks



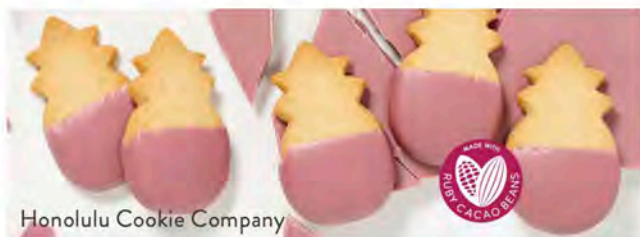
Anteprima Wirebag

Let Lāna'i Transit Hawai'i (Building A, Level 1) take you to the land of rainbows with the newest addition to its Wailea Rainbow collection. The Wailea messenger is sturdy and stylish, and is available in a spectrum of colors. The line also includes full and lightweight tote bags, rucksacks and daypacks, and a convertible business pack that will take you from the boardroom to the beach.

A SEPTEMBER TO REMEMBER AT ROYAL HAWAIIAN CENTER



Honolulu Cookie Company's (Building B, Level 1) latest offering is a true gem! The new Ruby Dip is made from natural ruby cacao beans and it's the perfect balance of fresh berry-fruitiness and luscious smoothness. Paired with its premium shortbread cookies, this cookie delivers a new taste and color experience. The perfect marriage, the new Ruby Dipped Macadamia flavor is available for a limited time, so grab it before they're gone!



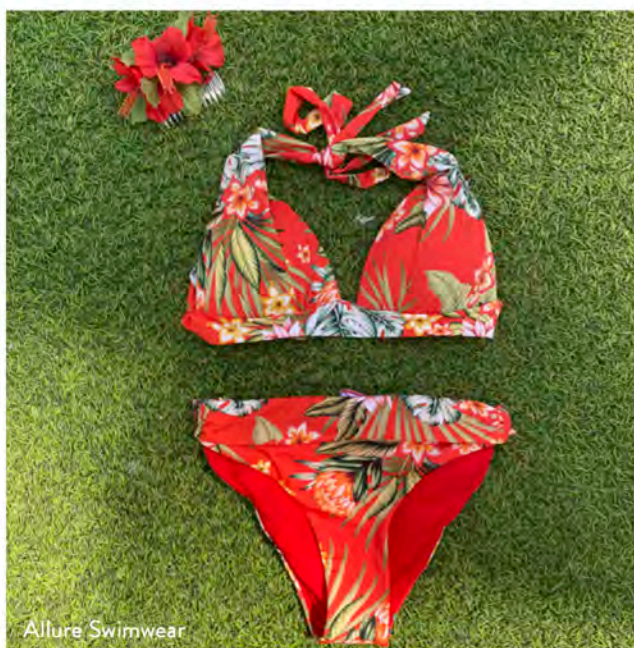
Honolulu Cookie Company

Speaking of stunning colors, RIMOWA (Building C, Levels 1 and 2) has updated its selection of seasonal essential suitcase shades with two new limited-edition inspired hues, Desert Rose and Cactus. The collectable colors combine trend-driven styling with the enduring quality of polycarbonate. Statement-making either on their own or paired together for a contrasting look, these were inspired by the arid climes of the Mojave Desert.



Rimowa

Kama'aina shoppers also enjoy additional discounts at select merchants. At Allure Swimwear (Building C, Level 1) get 20% off your purchase – perfect for updating your beach ready wardrobe. Furla (Building B, Level 1) offers 10% off regularly priced handbags, small leather goods and more.



Allure Swimwear

FREE PARKING EXTENDED THROUGH SEPTEMBER 30!

Through September 30, enjoy up to 3 hours of free parking with any purchase at Royal Hawaiian Center! In a hurry and just need to pick-up an order? Simply park in one of our reserved Park & Go stalls on the 3rd floor near the elevators!



TAKE-OUT
OR DELIVERY
3 HOURS of FREE
PARKING!



WOLFGANG'S
STEAKHOUSE

BY WOLFGANG ZWIENER

  
@wolfgangswaikiki



LUNCH
SPECIALS
STILL ONLY
\$12.95



loco moco bento \$15.95



sirloin bento \$22.95



salmon bento \$18.95



NOW OFFERING FLAT RATE DELIVERY FROM AHP



Our entire menu of award-winning USDA Prime, Dry-Aged Steaks and the rest of our entrees, sides, salads, and desserts can now be delivered to your home for one flat fee - only \$10 for all 968 zip codes and \$15 for all 967 zip codes on O'ahu. Just call us to place your order - and enjoy delivery with *ALOHA!*

WE ARE CURRENTLY UNDER RENOVATION AND TEMPORARILY LOCATED AT:

IL LUPINO TRATTORIA & WINE BAR • OPEN DAILY 11:00AM - 10:00PM
Royal Hawaiian Center • Bldg B, Level 1 • wolfgangsteakhouse.net

808.922.3600 • opentable.com



Mochi Foods goes National

Mochi Foods, Hawaii's award-winning premix is used as a base for mochi signature creations. Now, Mochi Foods is going national with shipping available anywhere in the United States. Pei Wu, CEO, leads the charge to bring more of the Taiwanese delights she grew up with to the United States market.

Hawaii Farm Stand (Hawaii Farm Trails) Launches Subscription Box for Local Farms

This program is the brainchild of Kalisi Mausio and her sister, Angela Faanunu, two farming sisters in Hilo who gather small batch, handmade products (like honey, macadamia nuts, chocolate, etc.) from local Big Island farms. Buy your farm box and they'll ship for free across the State (and the US)!



Nalu Health Bar & Cafe Launches Third Oahu Location

Nalu Health Bar is passionate about providing authentic and healthy food, which fueled the opening of a third Nalu location in Haleiwa this July! The brand has built a stellar reputation across Oahu and is excited to bring their menu, a blend of Brazilian and Hawaiian influences, to the North Shore community.

Ko'olau Distillery Now Offers Whiskey Chocolate Bars

Ko'olau Distillery partnered with Manoa Chocolate Company in the unique venture to blend chocolate and whiskey. Cacao nibs soaked in the smooth and balanced whiskey have been turned into beautiful dark chocolate in this tasty collaboration.



HMAA Executive Chairman John Henry Felix Leadership Interview in Hawaii Business Magazine

As a local health insurer, HMAA continued operations without disruption throughout the safer-at-home orders, and their office has remained open to service clients, members and walk-in visitors. John Henry Felix looks at restarting Hawaii and how HMAA is safely adapting to a "new normal."



HARRIS

Marketing & Communications
Agency



FOOD GURUS

Food & Beverage
Marketing Specialists



Digital Optimization

Contact Jana at janas@harris-agency.com | (808) 946-4525 schedule your appointment

2250 Kalakaua Ave, Honolulu, HI 96815 | HARRIS-AGENCY.com





WAIKĪKĪ IMPROVEMENT ASSOCIATION

Wikiwiki Wire **GUIDELINES**

Wikiwiki Wire is published on the first Friday of each month. If you would like to share your news with other members, please send your info to: editor@waikikiimprovement.com.

Submission Deadline

Waikīkī-related news and information submitted by members (or their PR agencies) for the Wikiwiki Wire newsletter should be received no later than **5 PM THURSDAY, ONE WEEK PRIOR** to the newsletter's publication and distribution on the first Friday of each month.

News & Stories: Please submit any Waikīkī-related stories/articles as a Word doc and include photos to accompany stories/ articles. For best results, please upload photos as a separate JPEG attachment - maximum 2 MB each image.

Flyers/PDFs: Waikīkī-related flyers are welcome but must look like advertising flyers and not press releases. Please format flyers to an 8.5" x 11" size and submit them in a PDF format.

Press Releases: Please submit Waikīkī-related press releases as a Word doc. Press Releases that do not fit within one page of the Wikiwiki Wire newsletter will be returned for editing.

Photos: For best results, please upload photos as a separate JPEG attachment - maximum 2 MB each image.



WAIKĪKĪ IMPROVEMENT ASSOCIATION

We are a cross-section of business, government and the community; our members care about the future of this special place - Waikīkī.

For more than 40 years, the Waikiki Improvement Association has remained true to its objective: to improve, enrich and beautify Waikīkī for the benefit of residents and visitors alike and to promote conditions conducive to the economic and cultural good and for the betterment of the entire community.

HAWAIIAN DIACRITICAL MARKS

Waikīkī Improvement Association recognizes the use of diacritical marks (i.e., glottal stop (ʻ), macron (ā) in place names of Hawaiʻi, such as Waikīkī and Kalākaua Avenue and will include them whenever possible. We also respect the individual use (or not) of these markings for names of organizations and businesses.

There will also be times when we may not have a chance to add or change the markings in all of the articles submitted and when that happens, e kala mai.