



WAIKĪKĪ IMPROVEMENT ASSOCIATION

Wikiwiki Wire

E-newsletter keeping you up-to-date on Waikīkī news, features, trends and more!



Contents

3
ALOHA FESTIVALS
CELEBRATES THE RETURN
OF IN PERSON EVENTS
THROUGHOUT SEPTEMBER

6
THE DLNR RELEASES
THE ALA WAI HARBOR
IMPROVEMENTS VISION
REPORT

8
BILL TO EXPAND THE SCOPE
AND RATIONALE OF SPECIAL
IMPROVEMENT DISTRICTS
SIGNED INTO LAW

9
WAIKĪKĪ IMPROVEMENT
ASSOCIATION 2022 ANNUAL
MEETING & HO'OWEHIWEHI
AWARDS

10
WAIKĪKĪ BEACH CLEAN UP

11
WAIKĪKĪ HULA SHOW

12
STREET ACTIVITY IN & NEAR
WAIKĪKĪ

MORE WAIKĪKĪ NEWS, EVENTS & FOOD

LA MER - SEASONAL ALLIANCE OF
FLAVORS INSPIRED BY THE ISLANDS

2022 HALEPUNA WAIKIKI SUMMER
PROGRAM RUNS THROUGH SEPTEMBER
22, 2022

FOOD GURUS HAWAII - WE MOVE
BRANDS OFF SHELVES & INTO HEARTS

HAWAI'I CONVENTION CENTER
WELCOMES THE 40TH HAWAI'I
OKINAWAN FESTIVAL

NASTASSJA "TASHA" GUZEK APPOINTED
REGIONAL ACCOUNT DIRECTOR -
GOVERNMENT/MILITARY FOR HILTON
HAWAII RESORTS

SEPTEMBER NEWS FROM
INTERNATIONAL MARKET PLACE!

"MALAMA HAWAI'I" CELEBRATIONS AT
WAIKIKI BEACH WALK

RESTAURANT SUNTORY - A MENU FOR
EVERY SEASON

SEPTEMBER HAPPENINGS AT ROYAL
HAWAIIAN CENTER

THE WAIKIKI SHOPPING PLAZA -
INDUSTRY PARKING

Aloha Festivals Celebrates the Return of In Person Events Throughout September



The signature events include the Royal Court Investiture & Opening Ceremony, 68th Annual Waikīki Ho'olaule'a, and 74th Annual Floral Parade.

Aloha Festivals, Hawai'i's longest running cultural festival, returns in 2022 with its month-long celebration of the spirit of aloha. After a two-year hiatus of the in-person festival, Aloha Festivals will officially kick off on Sept. 10, 2022, continuing a treasured Hawaii tradition that has existed since 1946. The festival begins with The Royal Court Investiture & Opening Ceremony on Saturday, Sept. 10; followed by Hawaii's largest block party at the 68th Annual Waikiki Hoolaulea on Saturday, Sept. 17. The celebration concludes with the capstone 74th Annual Floral Parade on Saturday, Sept. 24.

Each of the events will highlight the 2022 Aloha Festivals theme, “Aloha ‘Āina, Love of the Land.” The foundation of Aloha ‘Āina is a reverence for the ‘āina (land). Subsequently, Aloha Festivals recognizes the collective kuleana (responsibility) all have to care for the land from whom all receive nourishment. This message and goal will be interwoven throughout all Aloha Festivals events.

At select events and online, attendees can purchase 2022 Aloha Festivals ribbons as well as apparel from a limited Aloha Festivals X Hawaii’s Finest collaboration. Updated Information about merchandise sales will be posted at www.AlohaFestivals.com/shop.



ALOHA FESTIVALS 2022 SIGNATURE EVENTS SCHEDULE

Royal Court Investiture & Opening Ceremony

Saturday, Sept. 10, 2022, 4pm - 6pm

Helumoa Gardens at The Royal Hawaiian, A Luxury Collection Resort

The Royal Grove at Royal Hawaiian Center

The Royal Court Investiture and Opening Ceremony will kick off the month-long Aloha Festivals celebration with its treasured cultural protocols at Helumoa Gardens located at The Royal Hawaiian, A Luxury Collection Resort. In a stately ceremony that honors Hawaii’s ali’i (ruling chiefs), this year’s Aloha Festivals Royal Court will don regalia worn only by ali’i of the highest rank. As representatives of Hawaii’s past, the Aloha Festivals Royal Court ensures the festival is rooted in the most cherished traditions of Hawaii. Following the investiture, the Opening Ceremony at the Royal Grove at Royal Hawaiian Center will feature hula and mele by Ka Lā ‘Ōnohi Mai O Ha’eha’e, for a special evening in the heart of Waikiki.

68th Annual Waikīkī Ho'olaule'a

Saturday, Sept. 17, 2022 | 6 – 9:30 p.m.

Kalākaua Avenue

Aloha Festivals hosts Hawai'i's premier block party with the 68th Annual Waikīkī Ho'olaule'a. Unlike any other event, Waikīkī's beachfront Kalākaua Avenue will be transformed with booths highlighting Hawai'i cuisine, crafts and culture. Attendees can taste the best of local flavors, peruse artisan-made crafts – and with five stages of incredible entertainment – the Waikīkī Ho'olaule'a will be an unforgettable experience. Attendees can look forward to performances by Kapena, Ho'okena and other Hawai'i artists.



74th Annual Floral Parade presented by 'Alohilani Resort Waikiki Beach

Saturday, Sept. 24, 2022 | 9 a.m. – 12 p.m.

From Ala Moana Park through Kalākaua Avenue to Kapi'olani Park

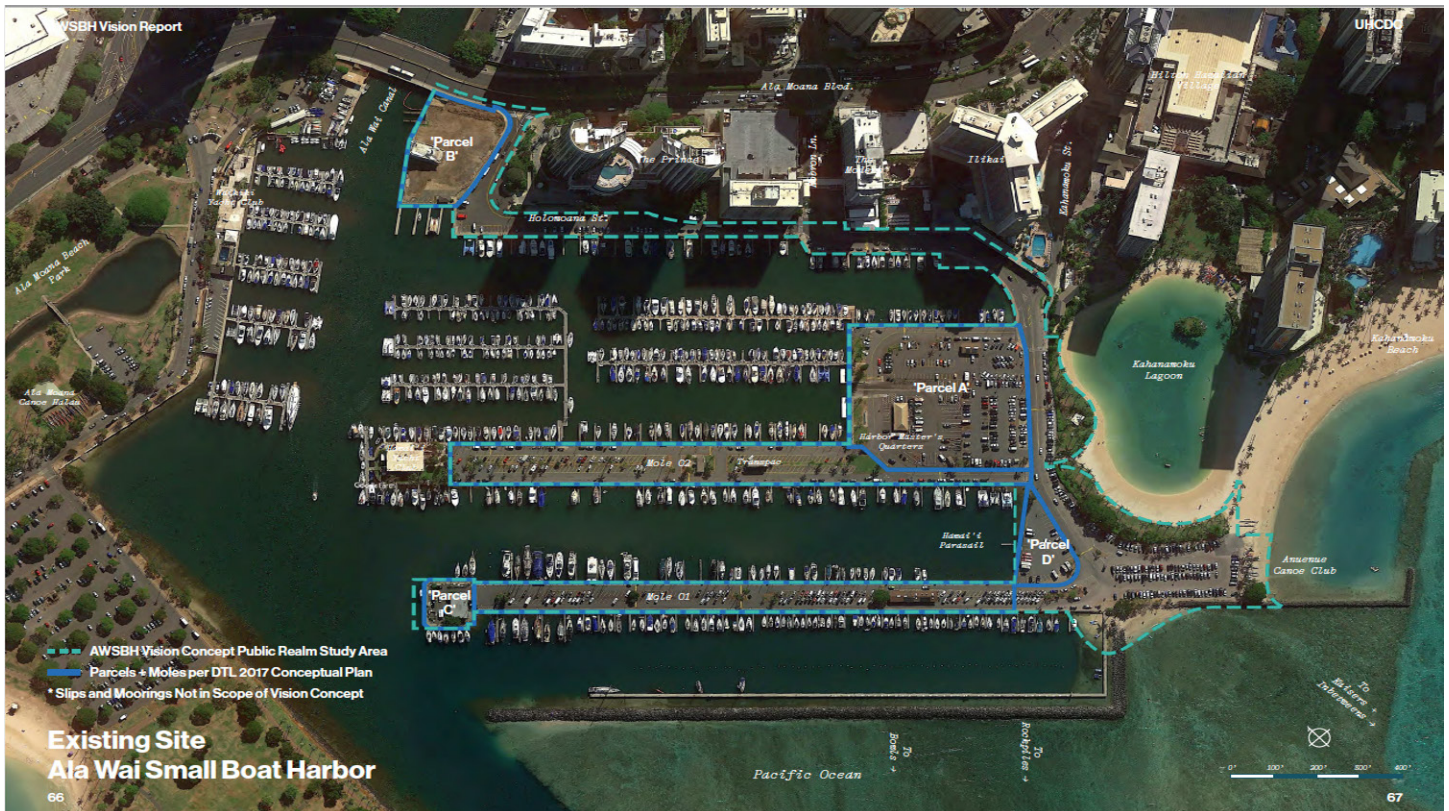


The 74th Annual Floral Parade presented by 'Alohilani Resort Waikiki Beach will conclude the Aloha Festivals with a colorful procession of Hawaiian culture through Waikīkī. As the state's largest parade, intricate floats will be decorated with a rainbow of fresh flowers, men and women on horseback will showcase the traditional art of pā'ū riding, and participants from marching bands to civic leaders will display the unique aloha spirit that unites Hawai'i's community.

Aloha Festivals 2022 is generously supported by the Hawai'i Tourism Authority, Office of Hawaiian Affairs, City & County of Honolulu, 'Alohilani Resort Waikiki Beach, Royal Hawaiian Center, Hawaiian Airlines, Hilton Hawaiian Village Waikiki Beach Resort, Hawaii's Finest, Outrigger Hospitality Group, Waikiki Beachwalk, Kyo-ya Hotels and Resorts and Hawaii Children & Youth Day.

The mission of Aloha Festivals is to foster the aloha spirit through the perpetuation of the Hawaiian culture and the celebration of the diverse customs and traditions of Hawai'i. For more information about Aloha Festivals, visit www.AlohaFestivals.com.

The DLNR releases the Ala Wai Harbor Improvements Vision Report



The Department of Land & Natural Resources (DLNR), Division of Boating and Ocean Recreation (DOBOR) is going through a community visioning process for the Ala Wai Harbor Improvement Plan. The DOBOR has contracted the University of Hawai'i Community Design Center (UHCD) to develop the Harbor Improvements Vision Plan as a way to guide future proposals for the redevelopment of the harbor and adjoining public space. Drawing on the findings from community engagement facilitated by DTL in 2017; DOBOR's 2019 Strategic Plan; and a guided site visit with Senator Sharon Moriwiki and the Ala Wai Small Boat Harbor Working Group, the UH team prepared two concepts for the harbor that was shared with key stakeholders to gather feedback.

The DLNR-DOBOR conducted a briefing to the DLNR Land Board on Friday, August 26th. There are 2 concept designs option A & option B that were presented to the Board. The BLNR briefing recording is available here (scroll to timecode 4:36:30). The BLNR approved the request by DOBOR (item J-1) to proceed with the Request for Proposals process for the harbor redevelopment based on the concepts in the vision plan. The DLNR is planning to send out a Request For Proposals for prospective developers to propose harbor improvements based on the concepts in the vision plan.

The Ala Wai Harbor Vision Report can be accessed online at:

<https://dlnr.hawaii.gov/dobor/files/2022/08/VISION-REPORT-DOBOR-AWSBH-20220825.pdf>



Bill To Expand The Scope And Rationale Of Special Improvement Districts Signed Into Law

HB1672: RELATING TO SPECIAL IMPROVEMENT DISTRICTS

Governor Ige signed into law HB1672, which broadens the counties' authority to create special improvement districts by expanding the objective of these districts to include environmental protection and preservation, natural resource management, and natural hazard mitigation. This bill was enacted as law through the passage of Act 208 on June 27, 2022 upon signature by Governor Ige.



Act 208 expands the rationale for which counties may create special improvement districts to include environmental research, restoration, and maintenance; natural resource management; and natural hazard mitigation to improve environmental conditions and provide community benefits through amendments to Section 46-80.5 Hawai'i Revised Statutes. Hawai'i's coastal communities are experiencing the disproportionate impacts of climate change as illustrated by the December, 2021 record rainfall and coastal flooding in Waikīkī and ongoing coastal erosion crises at many locations in Hawai'i. Addressing these challenges requires comprehensive planning efforts across a range of state and county agencies in close cooperation with community.

Special improvement districts can provide a vital means for communities to directly fund or finance community resilience, adaptation, and natural resource conservation and restoration efforts. Special improvement districts in Waikīkī have demonstrated success in addressing local priorities and needs and have developed with a community-based special improvement district association. The Waikiki Beach Special Improvement District and its association have demonstrated the effectiveness of these special tax districts for developing and funding coastal management and restoration projects in partnership with local government.

The ability to create new and innovative special improvement districts is an important tool to address the growing demands of communities throughout Hawai'i with unique challenges and needs. The WBSIDA is pleased to see the passage of Act 208, expanding the justification and objectives for the creation of improvement districts statewide to include environmental and natural hazard considerations and climate change impacts. This will enhance the ability of communities to create sustainable and resilient communities with resources assessed directly from the communities they serve.

WAIKĪKĪ IMPROVEMENT ASSOCIATION 2022 ANNUAL MEETING & HO`OWEHIWEHI AWARDS



OCTOBER 26, 2022 WEDNESDAY

4:00 - 4:15 PM BUSINESS MEETING

4:15 - 4:45 PM 2022 SEA LEVEL RISE ADAPTATION

4:45 - 5:30 PM HO`OWEHIWEHI AWARDS

5:30 - 7:00 PM PUPU RECEPTION

NAME: _____

COMPANY: _____

ADDRESS: _____

EMAIL: _____

PHONE: _____

PAY BY CHECK:
MAKE CHECK PAYABLE TO:
WAIKIKI IMPROVEMENT ASSOCIATION
2250 KALAKAUA AVE SUITE #315
HONOLULU, HAWAII 96815

Sponsor Levels

____ "ILIMA" \$3000 (30 TICKETS) ____ "PIKAKE" \$2000 (20 TICKETS) ____ "PLUMERIA" \$1000 (10 TICKETS)

OF TICKETS ____ x \$105.00 = ____ TOTAL AMOUNT \$ ____

CREDIT CARD #: _____

EXP DATE: _____

CVC CODE: _____

TO PAY BY CREDIT CARD: Call, fax, email or mail in form.

WORK PHONE

ph: 808-923-1094
Fax: 808-923-2622

E-MAIL

joann@waikikiimprovement.com
www.waikikiimprovement.com

WORK ADDRESS

2250 Kalākaua Ave, Suite 315
Honolulu, Hawai'i 96815

WOW Waikiki Beach Clean Up

MAKE A DIFFERENCE



Come and join us!

**OCTOBER 22, SAT. ~ 7:00 AM
MEET AT DUKE'S STATUE**

Kūhio Beach Park

Transportation will be provided to other
clean up areas.

Validated Self Parking @ the Hyatt Regency
for Beach Clean Up participants.

Continental Breakfast provided
Pau by 9:00 AM

**WAIKĪKĪ IMPROVEMENT
ASSOCIATION**

2250 Kalākaua Ave
Suite 315

Honolulu, Hawai'i 96815

Email:

mail@waikikiimprovement.com

**PLEASE RSVP: 808.923.1094
JOANN@WAIKIKIIMPROVEMENT.COM**

Mahalo to our Sponsors:

Hyatt Regency Waikiki
ABC Stores
Hilton Hawaiian Village
Enoa Corporation
Polynesian Adventure Tours
Royal Star Hawai'i
Bank of Hawai'i
HPD D6
Halekūlani



Hawaiian Building Maintenance
Outrigger Enterprises
Highgate Hotels
Sheraton Princess Ka'iulani
Waikiki Beach Marriott Resort
New Otani Kaimana Beach
Moana Surfrider Hotel
Central Pacific Bank
Lili'uokalani Trust

Waikiki Hula Show

AT THE KUHIO BEACH HULA MOUND

WEDNESDAYS AND SATURDAYS, 6:30-7:30 PM, WEATHER-PERMITTING

Authentic Hawaiian music and hula by Hawaii's finest Halau Hula (dance troupes) and Hawaiian performers. Opens with traditional blowing of conch shell.

DETAILS

- Located on the ocean side of Kalakaua Avenue near the Duke Kahanamoku Statue, diagonally across from the Hyatt Regency hotel.
- Free, outdoors, casual, seating on the grass; beach chairs, mats, etc. okay. Cameras welcomed.
- No show if parades or street fairs are scheduled.

Presented by HLTA/Hawaii Tourism, Hyatt Regency Waikiki Beach Resort & Spa, City & County of Honolulu and the Waikiki Improvement Association.

For information, call 808-843-8002.



STREET ACTIVITY

IN AND NEAR WAIKĪKĪ (COURTESY OF THE CITY)

ALOHA FESTIVALS WAIKIKI HO'OLAULEA/STREET FEST

SATURDAY, SEPTEMBER 17, 2022

3:00 PM Road Closes | 1:00 AM Road Reopens (Approximate)

ALOHA FESTIVALS WAIKIKI HO'OLAULEA/STREET FEST sponsored by Aloha Week Hawaii, Incorporated. The event expected to have 10,000+ participants. Makai curb lane of Kalakaua Ave. will be closed from 1 pm for setup. The event will close Kalakaua Avenue, all lanes from Seaside Ave. to Kapahulu Ave. Contact: Jody Tuiolomotu 382-9100, E-mails: info@alohafestivals.com or jody@productionhawaii.com. For more info, visit their website: <http://www.alohafestivals.com/>.

ALOHA FESTIVALS FLORAL PARADE

SATURDAY, SEPTEMBER 24, 2022

8:30 AM Roads Close | 1:00 PM Roads Reopen (Approximate)

ALOHA FESTIVALS FLORAL PARADE sponsored by Aloha Week Hawaii, Inc/Aloha Festivals/Waikiki Improvement Association. The event is expected to have 1,500 participants, 15 vehicles, 9 bands & 7 floats. It will start at Ala Moana Park ews entrance/exit, to Ala Moana Blvd., to Kalakaua Ave., to Monsarrat Ave., to end at Waikiki Shell Parking Lot in Queen Kapiolani Park. Contact: Rick Egged or Toni Lee, Email: info@alohafestivals.com or For more info, visit their website:<http://www.alohafestivals.com/>



La Mer

Seasonal alliance of flavors inspired by the islands
For more information or to reserve a table, please call 808-518-2019.



La Mer



ART OF WELLBEING PRESENTATIONS - SEPTEMBER

- September 10: Your Guide to Gluten
 - Understand this “glue” that holds food together and how to navigate what is best for you.
- September 24: Acupuncture for Pain Relief
 - Review the root of pain, and how it can be managed by restoring energy by way of Eastern Medicine.

The 75-minute discussion are open to the public and are \$25 per person. Please call 808-931-5322 for more information and to reserve a spot.

Halekulani Fine Art Collection

Committed to the arts & culture of Hawaii, Halekulani has assembled one of the finest art collections of local art works in the state of Hawaii. For the first time ever, it has been formally documented and curated. Exhibited throughout the hotel, guests and patrons are now able to indulge in a personalized and an elevated art experience. For more information, please visit: www.halekulani.com/fine-art-collection/.

John Tanji Koga (b.1964)
Dancing Water, 2021
Oil on Canvas
30”H x 24”W





2022 HALEPUNA WAIKIKI SUMMER PROGRAM

June 21 – September 22, 2022

Summer is still in full swing at Halepuna Waikiki! Guests are able to enjoy a special daily activity such as lei making, hula lessons or attending The Bishop Museum, Honolulu Museum of Art, KCC Farmer's Market, and our Wine Mixer.

Please contact the Guest Relations Desk for more information and to sign-up.



HAWAII'S BEST:

- Daily Breakfast for up to two people
- \$25 per day resort credit
- Sparkling wine welcome amenity
- Halepuna Access – Complimentary access to the Honolulu Museum of Art & The Bishop Museum
- Fitness Classes
- Complimentary WiFi and NO resort fees

Call 808-445-9595 to reserve your room today!



HALEPUNA WAIKIKI PUBLIC ART PROGRAM

Halepuna Waikiki's public art program features contemporary art commissioned exclusively for the hotel and showcases the works of select local artists. Each artist reflects a sense of place, and their works were influenced by Hawai'i's unique environment.

Aaron Padilla (b.1974)
White Knots, 2011
Wood
22"H x 37"W x 15"L



fg

**FOOD GURUS
HAWAII**

We Move Brands Off Shelves & Into Hearts

Food Gurus is Hawaii's Food & Beverage Marketing Specialist.
One -Stop Comprehensive Creative, Digital, Marketing &
Publicity Customized Solutions.



foodgurususa.com

Contact us for a free consultation
Doug Harris - doug@digivortex.com | (808) 946-4626



HAWAII[™]
CONVENTION CENTER
Where Business and Aloha Meet

Hawai'i Convention Center Welcomes 40th Hawai'i Okinawan Festival



From Sept. 3-4, 2022, the Hawai'i Convention Center welcomed the 40th Hawai'i Okinawan Festival, drawing thousands of attendees to celebrate all things Okinawan.

Started in 1982 by the Hawaii United Okinawa Association, the festival – under the theme "Sharing Uchinanchu Aloha" – included ono food, beautiful performances, educational cultural exhibits and much more.

The festival returned to the Center following two years of virtual events due to the COVID-19 pandemic.

Learn more at okinawanfestival.com.

*Celebrate your
Holiday Pā'ina
at the Hawai'i Convention Center!*

We look forward to hosting your next holiday event.

*Book by October 31, 2022 and qualify for
complimentary venue rental and parking!*

Contact us at info@hccasm.com.



HAWAII[™]
CONVENTION CENTER
Where Business and Aloha Meet





Nastassja “Tasha” Guzek Appointed Regional Account Director – Government/Military for Hilton Hawaii Resorts

Hilton has appointed Nastassja “Tasha” Guzek as regional account director – government/military overseeing Hilton Hawaiian Village Waikiki Beach Resort, DoubleTree by Hilton Hotel Alana – Waikiki Beach, and Hilton Waikoloa Village. Guzek is jointly responsible for developing and using strategies for target customer channels and maintaining relationships with key customers and clients specifically within the government and military sectors.

Guzek has more than 16 years of sales experience in the hospitality industry. Most recently as the senior sales manager at DoubleTree by Hilton Hotel Alana – Waikiki Beach, she was responsible for managing group accounts focused on the U.S. and international government market. In that role she sought opportunities in untapped markets as well as growth in current clients through consultative selling. She was also a key player in supporting the property during the impacts of the pandemic by fulfilling the tasks of event sales manager, sales manager and sales coordinator simultaneously. Guzek originally joined the property as sales manager in 2016, where she was responsible for contracting with and developing promotions for the business travel sales market. In 2021, she was awarded the Hilton Circle of Excellence and Individual Sales Excellence awards for her performance while at the property, and she recently completed the Hilton Lead 2.1 Virtual Leadership Development Program with Harvard.



In addition to her Hilton experience, Guzek has held sales positions at Kuramathi Island Resort in the Maldives, and at the former Hyatt Regency Hotel & Casino Manila in the Philippines. Guzek holds a bachelor’s degree in tourism from the Asian Institute of Tourism at the University of the Philippines.

“Given her record of success working with our sister properties, Tasha is a natural fit to oversee these important accounts at a regional level,” said Debi Bishop, managing director of Hilton Hawaiian Village Waikiki Beach Resort. “We’re confident that our government and military clients will benefit from her leadership.”

INTERNATIONAL MARKET PLACE

September News from International Market Place!



Crackin' Kitchen comes to the Grand Lānai. Cariloha and Diagnostic Laboratory Services join the lineup of premium retailers and services.

Honolulu's hottest retail and dining experiences are right here in Waikiki. [International Market Place](#) continues to introduce exciting brands to visitors and locals, complemented by events and entertainment seven nights a week. Following are the latest additions to its world-class selection of dining, shopping and entertainment.

[Crackin' Kitchen](#), Grand Lānai, Level 3

A Hawaii favorite since 2015, Crackin' Kitchen has moved its Hawaiian Cajun seafood experience to the Grand Lānai. Signature items include saucy, delicious Hawaiian Cajun Combos with snow crab, shrimp, clams, mussels, corn, potatoes and SPAM cubes. It's all served in a "family fun" atmosphere where eating with your hands, sharing food and drinks, and having a good time is part of the Crackin' Kitchen experience!

Menu options include Dungeness crab and lobster, as well as a full raw bar with a chilled seafood tower, oysters on the half shell, Kauai shrimp cocktail, gumbo soup, chowder fries and Island crunchy salad. (Are you hungry yet?) Crackin' Kitchen is open daily for lunch and dinner from noon to 11 p.m. with Happy Hour daily from 3 to 5 p.m. Breakfast service will begin in September. For reservations, call (808) 404-9221.

[Cariloha](#), Level 1, Banyan Court

As a leader in Sustainable Luxury™, Cariloha provides eco-friendly alternatives to traditional fabrics. It specializes in sustainable, bamboo-based bedding, bath products and apparel. The company's passion for comfort and sustainability is based on helping customers sleep, live and feel every day like they do while on vacation.

Cariloha's soft and sustainable sheets, duvet covers and comforters are made from luxurious bamboo-viscose, creating an incredible sleep experience. Towels and robes offer unmatched

softness and absorbency, while T-shirts, sleepwear, underwear, and active wear headline the cool, comfortable clothing selection for men and women.

[Diagnostic Laboratory Services](#), Level 3, Valet Parking Area

Diagnostic Laboratory Services, Inc. (DLS) is now offering fast and convenient COVID-19 testing at International Market Place for those planning international travel. All testing meets government requirements for those traveling to Japan, Korea and other destinations.

The [DLS Rapid Response Vehicle](#) is available to visitors and Hawai'i residents from 1 p.m. to 7 p.m. on Monday, Wednesday, Friday and Saturday. DLS administers tests and processes the same-day results out of the Rapid Response Vehicle in the valet parking area on Level 3. No appointment is needed and payment is required at the time of testing. Parking validation is provided with the purchase of a COVID test. For more information: www.DLSLab.com/Waikiki

[Aesop](#), Level 1, Queen's Court

Aesop creates GoFundMe for Ukrainian team member.

When Vlada Brich, a native of Ukraine and retail consultant at Aesop Hawaii, shared news of her family's ordeal in the war, her Aesopian colleagues came together, creating a GoFundMe for direct support: <https://gofund.me/9f33cf56>. The goal is ambitious but achievable and all contributions, large and small, are equally appreciated.

Vlada's home country of Ukraine has seen nearly 13 million families displaced by war and her own family split for safety. Her father and 21-year-old brother could not leave Ukraine, while her mother and 13-year-old brother fled to the Czech Republic.

Over the past five months, Vlada worked to get her mother and younger brother to a safe place of refuge in America. They recently landed in Hawai'i, where Vlada's brother has enrolled in middle school on O'ahu. Aesop is gathering funds to support the transition to a new life in the US. In addition to monetary donations, gift cards are deeply appreciated as this family builds a foundation on the islands. They arrived humbly with backpacks in hand and the needs are great.

[HUB Coworking Hawaii](#), Level 2, Mauka Court

Hub Coworking at International Market Place is open daily from 11 a.m. to 8 p.m., with extended hours for members. They are now offering Hawaii residents a free one-week pass with Hawaii ID.

Whether you live in Waikiki and need office space, desire a professional place to conduct business and hold meetings, or if you are traveling and require the support of a fully-equipped business center, HUB Coworking Hawaii is the solution. Locally owned, there are a variety of plans, including 24/7 access for members, and "scholarships" are available to select startups and causes. For information, visit www.hubcoworkinghi.com or call 808-664-3306.

[Herringbone Waikiki](#), Grand Lānai, Level 3

At Herringbone Waikiki, the weekend brunch has resumed, pairing fresh fruit mimosas with popular dishes such as the Papaya Bowl, Eggs Benedict, and Mochi Pancakes. Executive chef Gary Tamashiro is adding new items to the brunch menu, available Saturdays and Sundays from 11:30 a.m. to 2:30 p.m. The new "Island Burger" is now on the Happy Hour menu, which guests can enjoy daily in the bar & lounge from 4 to 6 p.m.

For more information on all stores and events, visit shopinternationalmarketplace.com



Comingupcoming

NEWS, NOTES & HAPPENINGS from Waikiki Beach Walk

“Mālama Hawaii” with Cultural Celebrations at Waikiki Beach Walk

Waikiki Beach Walk, the vibrant shopping, dining and entertainment district at Lewers Street and Kalākaua Avenue, is committed to preserving and sharing Hawai‘i’s rich cultural heritage. This includes hosting a variety of authentic Hawaiian music and hula performances to engage Hawai‘i residents and enhance the visitor experience.

“As part of our commitment to ‘Mālama Hawai‘i,’ Waikiki Beach Walk invites travelers to experience the Hawaiian Islands on a deeper level with a greater emphasis on connecting with our culture. By highlighting our rich history and important cultural practices such as music and dance, it is our goal to perpetuate and share Hawai‘i’s mo‘olelo (stories) with our residents and visitors,” said Blaine Kamalani Kia, entertainment director and cultural advisor to Waikiki Beach Walk.

Fall entertainment highlights include the Aloha Festivals celebration and Makalauna - an annual tribute to Gabby Pahinui.



Friday, September 16 - Outrigger Day Celebration, 68th annual Aloha Festivals, Live Hawaiian Entertainment, 4:30 to 6 p.m.:

The month-long Aloha Festivals celebration includes musical tribute and special appearance at Waikiki Beach Walk by this year’s Aloha Festivals Royal Court, who don regalia that was traditionally worn only by ali‘i (ruling chiefs) of the highest rank. As representatives of Hawai‘i’s past, the Aloha Festivals Royal Court ensures the festival is rooted in the most cherished traditions of Hawai‘i. Complementing these cultural protocols is a bountiful lineup of hula and musical performances for a special afternoon in the heart of Waikīkī.

WBW-Friday, September 16 (continued)

- Kumu Hula Blaine Kamalani Kia & The Women of Hālau Ka Waikahe Lani Mālie & The Men of Hālau Kahulaliwai.
- Hawaiian Music by Kekaniwai featuring Albert Kia with Kalei Kahalewai & Blaine Kia (of Kamanawa).
- Special Guests: The appearance of the "official" Aloha Festivals Royal Court (courtesy of Aloha Festivals).
- Special presentation: Outrigger Hotel and Resort Partners; Presentation of gifts.
- Further details/appearances to be announced!

Saturday, September 17 – Aloha Festivals Waikīkī Ho'olaule'a, 6 to 9:30 p.m.

The 68th annual Aloha Festivals hosts Hawai'i's largest block party with the Annual **Waikīkī Ho'olaule'a**. The **Waikiki Beach Walk sponsor stage** (Lewers St.) will rock the evening with top local artists, award-winning hālau hula, and more. Kalākaua Avenue will be transformed with booths showcasing Hawai'i cuisine, crafts and culture.

Sunday, September 18 – Mele Hali'a Sunday Showcase, 5 to 6 p.m.

Kamehameha Schools Hawaiian Ensemble under Kumu Kaleo Trinidad will headline the popular Mele Hali'a, on Sunday, September 18 from 5 to 6 p.m. Talented students from the Kamehameha Schools Kapālama campus will perform traditional Hawaiian music, and oli (chant).

Mele Hali'a features the finest in Hawaiian musical entertainment by some of Hawai'i's most exceptional, award-winning artists on one special Sunday each month. All performances are free of charge.

Saturday, October 15: Makalauna, 4:30 to 7:30 p.m.

This annual ceremony includes musical tributes, hula and lei draping at Waikiki Beach Walk to honor legendary musician **Gabby "Pops" Pahinui and 'ohana** (family). A perpetual favorite, Pahinui's statue graces the Waikiki Beach Walk Plaza. Scheduled to appear:

- **Ceremonial Tribute**
Led by Entertainment & Cultural Director, Blaine Kamalani Kia
- **Live Music Tribute**
Hosted by ONE MELE "*A Core of Hawaiian Musicians*" and featuring special guest Kunia Galdeira – a grandson of Gabby – and representatives of the Pahinui 'ohana

Sunday, October 16 – Mele Hali'a Sunday Showcase, 5 to 6 p.m.

Greg Sardinha & Friends will headline the monthly musical showcase, **Mele Hali'a**, on Sunday, October 16 from 5 to 6 p.m. Hawaii born and raised, Greg is a talented steel guitar player and the winner of the 2014 Na Hoku Hanohano Award for Instrumental Album of the Year for "Stainless" - Steel Guitar Stylings of Greg Sardinha. Greg Sardinha & Friends will perform traditional and contemporary Hawaiian music.



RESTAURANT SUNTORY
JAPANESE CUISINE

A MENU FOR EVERY SEASON

The Restaurant Suntory menu beautifully presents the changing of the seasons on your table.

HONOLULU – Restaurant Suntory keeps a sense of new with its ever-changing, highly limited [Shunsai-zen Lunch Special](#). This monthly special is presented kaiseki-style, a tasting course consisting of multiple small servings that has evolved into what could be considered an art form.

Highly regarded as haute cuisine, kaiseki is now one of Japan’s finest dining traditions, which offers an imaginative balance of taste, texture, and colors. It features multiple dishes that capture the spirit of the season through exquisite flavor combinations and stunning presentation, with the intent that the natural flavors shine through at the peak of freshness. Centered on ingredients of superior quality, kaiseki also emphasizes the use of local ingredients that are meticulously prepared to add to the uniqueness of the experience and enhance each product. Changing every month, Restaurant Suntory’s highly limited Shunsai-zen Lunch Special provides an authentic kaiseki experience that gives you a taste of the Japanese seasons without leaving Honolulu.



Highly regarded as haute cuisine, kaiseki is now one of Japan’s finest dining traditions, which offers an imaginative balance of taste, texture, and colors. It features multiple dishes that capture the spirit of the season through exquisite flavor combinations and stunning presentation, with the intent that the natural flavors shine through at the peak of freshness. Centered on ingredients of superior quality, kaiseki also emphasizes the use of local ingredients that are meticulously prepared to add to the uniqueness of the experience and enhance each product. Changing every month, Restaurant Suntory’s highly limited Shunsai-zen Lunch Special provides an authentic kaiseki experience that gives you a taste of the Japanese seasons without leaving Honolulu.

The name of the meal perfectly reflects the heart of kaiseki. The *shun* in Shunsai-zen translates to “in season” and *sai* signifies the myriad “coloring.” *Zen*, in this case meaning “meal,” refers to the traditional Japanese dining style of serving multiple dishes as a set on a single tray. While [Restaurant Suntory’s Washoku Area](#) has more than one zen-style set option among their delectable lunch menu, only 18 servings of the \$38 Shunsai-zen Lunch Special can be reserved per day (and they sell out quickly!).

The Shunsai-zen medley typically consists of eight dishes, served over four courses, which include dessert. September’s menu offers hearty fall flavors including Mushroom and Chicken Mixed Rice, “Moon Viewing” Soup with Shrimp Cake, and Homemade Sweet Potato Mousse with Chestnut. To request this menu, first secure a lunchtime reservation for the Washoku dining area through [Resy](#). Then, email your request for the Shunsai-zen Lunch Special to aloha@rs-honolulu.com with your name and reservation date. In line with the Japanese concept of *mottainai*, which spurns waste, and as Shunsai-zen ingredients are obtained in advance solely for the select number of servings, kindly note that the restaurant does not refund cancellations.

[Official website](#)

[Reservations](#)

Facebook & Instagram: @restaurantsuntoryhnl



September Happenings At Royal Hawaiian Center

Work in Waikīkī

SEPTEMBER 5, 2022

Royal Hawaiian Center will post job opportunities for its merchants Monday, September 5th. Details on participating merchants and open positions will be posted on Royal Hawaiian Center's website and social media channels. This is not an in-person event. No appointment is necessary. For more details, visit www.RoyalHawaiianCenter.com/careers.



Aloha Festivals Royal Court Investiture & Opening Ceremony

SEPTEMBER 10, 2022 | FROM 4:00PM – 6:00PM

The Royal Court Investiture and Opening Ceremony will kick-off the month-long Aloha Festivals celebration with its treasured cultural protocols. The evening will begin with The Royal Court Investiture in a stately ceremony that honors Hawai'i's ali'i (ruling chiefs). As representatives of Hawai'i's past, the Aloha Festivals Royal Court ensures the festival is rooted in the most cherished traditions of Hawai'i. Following the Investiture, the Opening Ceremony at the Royal Grove at Royal Hawaiian Center will feature hula and musical performances for a special evening in the heart of Waikīkī. To learn more, visit www.RoyalHawaiianCenter.com/events.



Rooftop Stargazing in Paradise

SEPTEMBER 21, 2022 | AT 7:00PM

See Saturn and its rings! On September 21 at 7:00pm, you and your 'ohana are invited for an up close and personal look at the moon in the Hawaiian night sky. Join us for our monthly Rooftop Stargazing event (walkway between Buildings A & B, Level 4). The event is open to the public and free to attend! First come, first serve! Masks will be encouraged and social distancing will be observed.

To learn more, visit www.royalhawaiiancenter.com/events/rooftop-stargazing.

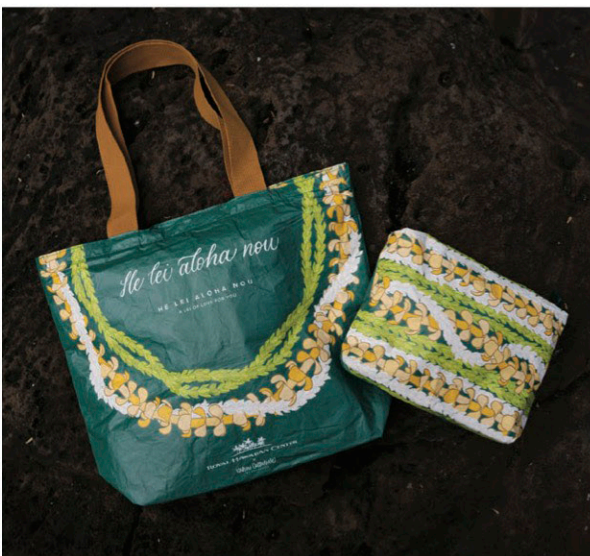
For a full list of events, visit www.royalhawaiiancenter.com/events.

Royal Hawaiian Center Welcomes Broome Street General Store

Broome Street General Store will open its very first Hawai'i location at Royal Hawaiian Center **September 1st, 2022**.

The luxury convenience shop features a curated selection of goods from around the world including specialty foods, coffees, teas and read-made bites amid home décor and other accessories. Check out the one-stop shop located on Level 1 in Building B between 11:00am-9:00pm, daily. Follow Broome St. General on Instagram [@broomestgeneralwaikiki](https://www.instagram.com/broomestgeneralwaikiki).

For updates on new stores and restaurants, follow us on social media ([@royalhwncntr](https://www.instagram.com/royalhwncntr)) or visit our website at www.royalhawaiiancenter.com/events.



Lei Aloha (A Lei of Love for You) Gift with Purchase

NOW - SEPTEMBER 30, 2022

Now through September 30, spend a minimum of \$300 to receive a complimentary water-resistant pouch or spend \$1,000 to receive a complimentary water-resistant tote uniquely designed as a collaboration between Kākou Collective and Royal Hawaiian Center. Kākou Collective is the studio of Native Hawaiian surface pattern designer and illustrator Kea Peters. Her mission is to share the love and knowledge of local culture in Hawai'i through original artwork and quality products. Receipt(s) from purchases made from August 15 – September 30, 2022, can be redeemed at Helumoa Hale Guest Services located in Building B Level 1 of Royal Hawaiian Center while supplies last. Some restrictions apply. Guests will be limited to redeem one item per customer, per day. To learn more, visit

www.RoyalHawaiianCenter.com/events/fall-gift-with-purchase.

SEPTEMBER



KEPAKEMAPA 2022 | HELU 'EIWA

Complimentary Cultural Programming

LĀ PULE SUNDAY	PŌ'AKAHI MONDAY	PŌ'ALUA TUESDAY	PŌ'AKOLU WEDNESDAY	PŌ'AHĀ THURSDAY	PŌ'ALIMA FRIDAY	PŌ'AONO SATURDAY
		LOCAL INFORMATION A2: Building A, 2nd Floor G1: The Grove Stage HH: Helumoa Hale For more information, call Helumoa Hale Guest Services. (808 922-2299)		1 12PM - 1PM G1 Keiki Hula Lesson 5:30PM - 6:30PM G1 Ha'eha'e Girls	2 12PM - 1PM A2 Lei Making Lesson 5:30 PM - 6:30PM G1 Malu Productions	3 5:30 PM - 6:30PM G1 Hula Kahiko
	5 11AM - 12PM HH 'Ukulele Lesson	6 11AM - 12PM G1 Hula Lesson 5:30 PM - 6:30PM G1 Kawika Trask Trio	7 11AM - 12PM A2 Lauhala Lesson 5:30 PM - 6:30PM G1 Pu'uhonua	8 12PM - 1PM G1 Keiki Hula Lesson 5:30PM - 6:30PM G1 Ha'eha'e Girls	9 12PM - 1PM A2 Lei Making Lesson 5:30 PM - 6:30PM G1 Malu Productions	10 5:30 PM - 6:30PM G1 Hula Kahiko
	12 11AM - 12PM HH 'Ukulele Lesson	13 11AM - 12PM G1 Hula Lesson 5:30 PM - 6:30PM G1 Kawika Trask Trio	14 11AM - 12PM A2 Lauhala Lesson 5:30 PM - 6:30PM G1 Pu'uhonua	15 12PM - 1PM G1 Keiki Hula Lesson 5:30PM - 6:30PM G1 Ha'eha'e Girls	16 12PM - 1PM A2 Lei Making Lesson 5:30 PM - 6:30PM G1 Malu Productions	17 5:30 PM - 6:30PM G1 Hula Kahiko
	19 11AM - 12PM HH 'Ukulele Lesson, HH	20 11AM - 12PM G1 Hula Lesson 5:30 PM - 6:30PM G1 Kawika Trask Trio	21 11AM - 12PM A2 Lauhala Lesson 5:30 PM - 6:30PM G1 Pu'uhonua	22 12PM - 1PM G1 Keiki Hula Lesson 5:30PM - 6:30PM G1 Ha'eha'e Girls	23 12PM - 1PM A2 Lei Making Lesson 5:30 PM - 6:30PM G1 Malu Productions	24 5:30 PM - 6:30PM G1 Hula Kahiko
	26 11AM - 12PM HH 'Ukulele Lesson	27 11AM - 12PM G1 Hula Lesson 5:30 PM - 6:30PM G1 Kawika Trask Trio	28 11AM - 12PM A2 Lauhala Lesson 5:30 PM - 6:30PM G1 Pu'uhonua	29 12PM - 1PM G1 Keiki Hula Lesson 5:30PM - 6:30PM G1 Ha'eha'e Girls	30 12PM - 1PM A2 Lei Making Lesson 5:30 PM - 6:30PM G1 Malu Productions	

All programming is subject to change or cancellation
 Contact Helumoa Hale Guest Services at 808.922.2299 or text us at 808.425.9088 for the latest information. Standard parking rates apply.



WAIKĪKĪ IMPROVEMENT ASSOCIATION

Wikiwiki Wire is published on the first Monday of each month. If you would like to share your news with other members, please send your info to: editor@waikikiimprovement.com.

Submission Deadline

Waikīkī-related news and information submitted by members (or their PR agencies) for the Wikiwiki Wire newsletter should be received no later than **5 PM MONDAY, ONE WEEK PRIOR** to the newsletter's publication and distribution on the first Monday of each month.

News & Stories: Please submit any Waikīkī-related stories/articles as a Word doc and include photos to accompany stories/ articles. For best results, please upload photos as a separate JPEG attachment - maximum 2 MB each image.

Flyers/PDFs: Waikīkī-related flyers are welcome but must look like advertising flyers and not press releases. Please format flyers to an 8.5" x 11" size and submit them in a PDF format.

Press Releases: Please submit Waikīkī-related press releases as a Word doc. Press Releases that do not fit within one page of the Wikiwiki Wire newsletter will be returned for editing.

Photos: For best results, please upload photos as a separate JPEG attachment - maximum 2 MB each image.



WAIKĪKĪ IMPROVEMENT ASSOCIATION

We are a cross-section of business, government and the community; our members care about the future of this special place - Waikīkī.

For more than 40 years, the Waikiki Improvement Association has remained true to its objective: to improve, enrich and beautify Waikīkī for the benefit of residents and visitors alike and to promote conditions conducive to the economic and cultural good and for the betterment of the entire community.

HAWAIIAN DIACRITICAL MARKS

Waikīkī Improvement Association recognizes the use of diacritical marks (i.e., glottal stop (ʻ), macron (ā) in place names of Hawaiʻi, such as Waikīkī and Kalākaua Avenue and will include them whenever possible. We also respect the individual use (or not) of these markings for names of organizations and businesses.

There will also be times when we may not have a chance to add or change the markings in all of the articles submitted and when that happens, e kala mai.