



WAIKĪKĪ IMPROVEMENT ASSOCIATION

Wikiwiki Wire

E-newsletter keeping you up-to-date on Waikīkī news, features, trends and more!



Contents

3

WAIKĪKĪ BEACH
IMPROVEMENT PROJECT
UPDATES

6

INTERNATIONAL MARKET
PLACE LAUNCHES
CULTURAL AUDIO TOUR

7

DUKE KAHANAMOKU 2023
OCEAN FESTIVAL WAIKĪKĪ

8

THE KŪHIŌ BEACH HULA
SHOW

9

STREET ACTIVITY IN & NEAR

MORE WAIKĪKĪ NEWS, EVENTS & FOOD

HALEKULANI: SEASONAL ALLIANCE OF
FLAVORS AT LA MER

HALEPUNA: BED & BREAKFAST

HAWAI'I CONVENTION CENTER
WELCOMES COMIC CON HONOLULU AND
MADE IN HAWAI'I FESTIVAL

HILTON HAWAIIAN VILLAGE WAIKIKI
BEACH RESORT ANNOUNCES FOURTH OF
JULY WEEKEND CELEBRATION JUNE 30 -
JULY 2

WHAT'S NEW IN JULY AT INTERNATIONAL
MARKET PLACE

MOANA SURFRIDER, A WESTIN RESORT &
SPA BRINGS BACK POPULAR BREAKFAST
BUFFET
SUMMER SPECIALS AT WAIKIKI BEACH
WALK

FOOD GURUS: MOVING BRANDS OFF
SHELVES AND INTO HEARTS

PAC RIM MARKETING GROUP
HIGHLIGHTS RESTAURANT SUNTORY'S
NEW GRAND MENU

STEEL GUITAR WEEK & SUMMER
STARGAZING AT ROYAL HAWAIIAN
CENTER THIS JULY

SHERATON PRINCESS KAIULANI
PRESENTS AWARD-WINNING SPLASH
BAR CRAFTING SUMMER BEER PAIRING
COLLABORATION

SATISFY YOUR SWEET CRAVING AT THE
WAIKIKI SHOPPING PLAZA

Waikīkī Beach Improvement Project Updates



This year has been a productive year for beach improvements in Waikīkī. With a new Royal Hawaiian groin and a newly replenished beach, Waikīkī Beach is more stable than ever before and prepared to mitigate projected sea-level rise impacts. The Waikīkī Beach Special Improvement District Association (WBSIDA) continues to work closely with State and Federal partners on the development on long-term beach improvement plans in Waikiki. The focus of 2023 has been planning for long-term beach improvement and ecosystem restoration projects in Waikiki. The WBSIDA continues its partnership with the Department of Land and Natural Resources developing an Environmental Impact Statement, (EIS) for Waikīkī Beach that identifies potential beach improvements that will serve Hawai'i for generations to come. The Final EIS is expected to be completed in the summer, 2023. If approved by the Board of Land and Natural Resources, the Waikīkī Beach Improvements EIS will be a major milestone as a result of this six year planning effort, with the associated construction project to come to fruition possibly in Fall of 2024.



Kawehewehe Beach Small-Scale Beach Restoration Pilot Project

The WBSIDA is working with local government and stakeholders in response to severe and continued coastal erosion of Kawehewehe Beach in the Halekulani Beach sector of Waikīkī Beach fronting the Waikīkī Shore, Outrigger Reef and Halekulani properties. Recent structural failure of the Public Beach Right of Way between the Outrigger Reef and Halekulani hotels has resulted in periodic closures and restricted lateral access due to safety issues. In response to the ongoing beach erosion, the WBSIDA is facilitating an interim pilot beach restoration to address these issues.

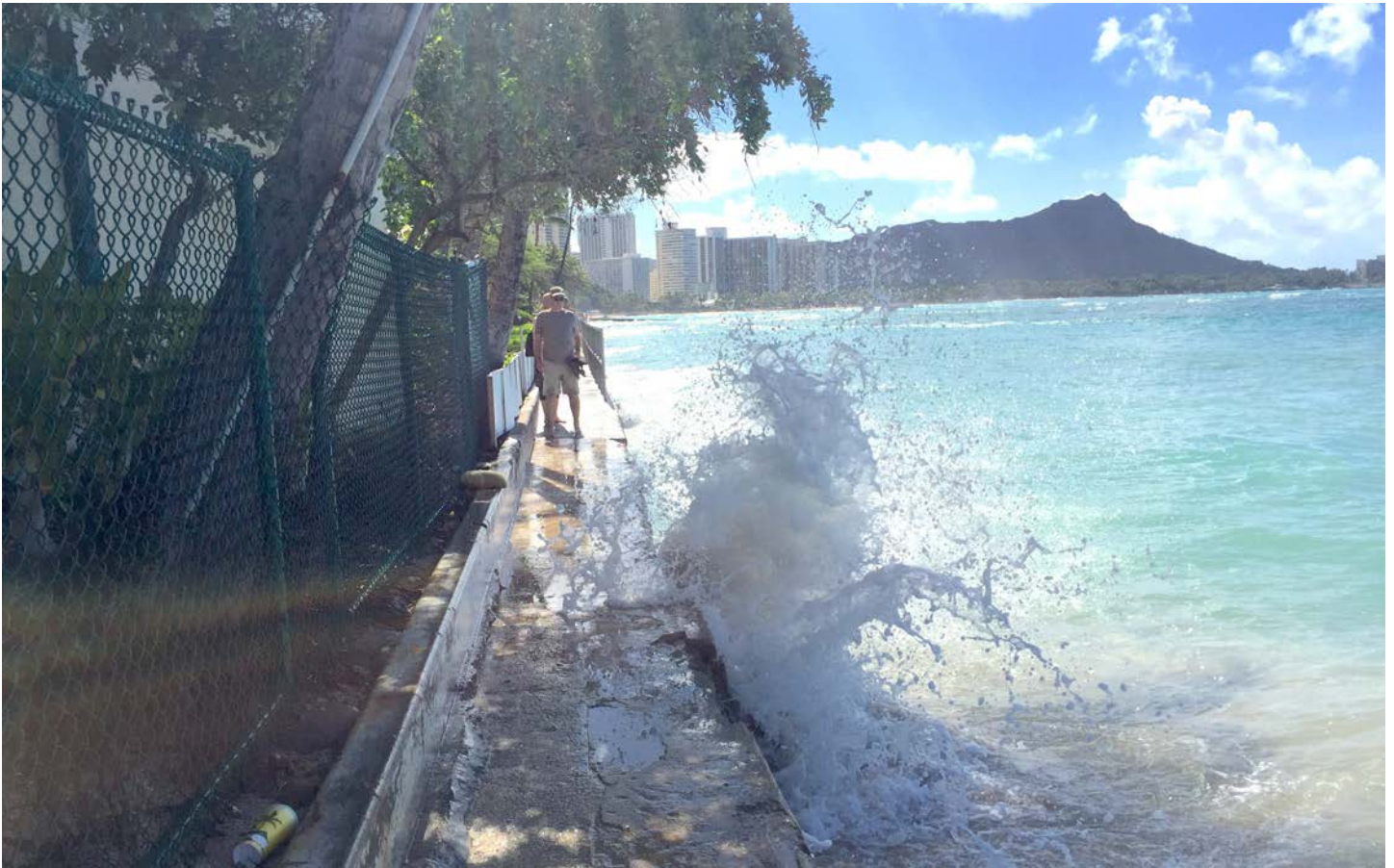
PROJECT GOALS:

- Demonstrate an innovative small-scale dredging system for shallow water operation projects statewide. This project would serve as a pilot demonstration for the equipment and technique.
- Demonstrate the cost-effectiveness using new methods and best management practices for nearshore dredging and beach restoration and sand placement.
- Restore and maintain eroded public beach and lateral access at Kawehewehe.



PROJECT SCOPE:

- Small-Scale Beach Nourishment (SSBN) application through the State DLNR.
- Placement of up to 5,000 cubic yards of sand as an interim, emergency measure.
- Compliments the planned Phase I beach stabilization in the Waikīkī Beach Improvements EIS.
- Demonstration of small-scale dredge system for nearshore sand back-passing.



INTERNATIONAL MARKET PLACE

International Market Place Launches Cultural Audio Tour

Self-guided tour in three languages offers an immersive journey into Waikīkī's storied past, promoting cultural understanding.



In a first for Waikīkī, and in supporting its mission to perpetuate and serve the Hawaiian culture, International Market Place has developed a GPS-enabled audio tour that illuminates the rich history of Waikīkī through stories, words, sounds and music.

The immersive listening experience, available in English, Japanese and Hawaiian languages, is designed to spark listeners' imaginations and deliver a rich understanding of the colorful

history of Waikīkī, International Market Place, and Hawai'i. When visitors walk through the center with the audio app enabled, geotags will automatically initiate descriptive soundbites on their mobile devices as they encounter 20 stops along the tour, each focused on an architectural feature that recalls specific people, places, or practices of Waikīkī past.

"International Market Place has a remarkable history, as does the ahupua'a of Waikīkī, which is something our guests and those who work here are very interested in," said Malia Zannoni, marketing & sponsorship director, International Market Place. "As a person of Hawaiian ancestry and a life-long resident, it's a source of pride to be able to share our history and bring awareness to others. Telling this story is a vital part of our mission to perpetuate and protect our culture and mālama Hawaii. We hope listeners can walk away feeling a deeper sense of connection with the land under their feet."

The soundbites cover a medley of local facts and lore spanning pre-contact Hawai'i to contemporary times, dishing on such topics as the crucial role of local streams, legendary Hawaiian musicians like Don Ho who once played at the original International Market Place, and the backstory of the 60-foot banyan tree, which used to house a radio station in IMP's early days.

Listeners also will enjoy a delightful peek into the life of Queen Emma Kalanikaumaka'amano Kaleleonālani Na'ea Rooke—wife of King Kamehameha IV and queen of Hawai'i from 1855 to 1863—who bequeathed much of her land in trust, including the IMP site, to support The Queen's Hospital, which she co-founded along with her husband.

The GPS-enabled audio tour is accessible at no cost through the TravelStorys mobile app that provides hands-free, location-based audio prompts. Users download the app and the tour, then can proceed at leisure without the need for cell service or Wi-Fi, which is especially appreciated by overseas visitors. Headphones or ear buds are recommended. Visit shopinternationalmarketplace.com for more information about the new cultural audio tour.



2023
**OCEAN
FESTIVAL**
WAIKIKI

AUGUST 18TH - 27TH 2023



OUTRIGGER
DUKE KAHANAMOKU
FOUNDATION



DUKE'S
WAIKIKI

OUTRIGGER
RESORTS & HOTELS



AIOHA
HOTELS



WAIAKEA
RESORTS & HOTELS

OluKai

BUZZ'S
ORIGINAL STEAK HOUSE

HAWAII
NEWS NOW

HAWAII TOURISM
AUTHORITY

RAW ELEMENTS

Kūhiō Beach Hula Show

Authentic Hawaiian music and hula by Hawaii's finest Halau Hula (dance troupes) and Hawaiian performers. Opens with traditional blowing of conch shell.

TUESDAYS AND SATURDAYS, 6:30-7:30 PM, WEATHER-PERMITTING

Presented by Oahu Visitors Bureau, Hawaii Tourism Authority, City & County of Honolulu and Waikiki Improvement Association.

LAST SUNDAY OF THE MONTH, 6:30 - 7:30 PM, WEATHER-PERMITTING

Presented by Hyatt Regency Waikīkī, City and County of Honolulu and the Waikīkī Improvement Association.

DETAILS

- Located on the beachside of Kalakaua Avenue near the Duke Kahanamoku Statue, diagonally across from the Hyatt Regency hotel.
- Free, outdoors, casual, seating on the grass; beach chairs, mats, etc. okay. Cameras welcomed.
- No show if parades or street fairs are scheduled.

For information, call 808-843-8002.



STREET ACTIVITY

IN AND NEAR WAIKĪKĪ (COURTESY OF THE CITY)

FAMILY DAY PARADE (GOD'S OHANA DAY PARADE)

July 8, 2023 Saturday

9:00 AM Road Closes | 11:00 AM Road Reopens (Approximate)

FAMILY DAY PARADE (GOD'S OHANA DAY PARADE) sponsored by Prayer Center of the Pacific. The parade is a First Amendment event that will have 500 marchers, 10 vehicles, 4 floats, and 1 band. It will start at Kalakaua Ave/Fort DeRussy/Sarato-ga Rd., to Kalakaua Ave., to end at Queen Kapiolani Park. Lane closures start at 7:30 am. Contact: Virginia Domligan 630-1187 E-mail:prayercenterpacific@hawaii.rr.com

NA WAHINE SPRINT TRIATHLON

July 30, 2023 Sunday

5:00 AM Lanes Close

10:00 AM Lanes Reopen (Approximate)

NA WAHINE SPRINT TRIATHLON sponsored by USA Triathlon/Try Fitness. The event is expected to have 300 triathletes. SWIM: Queen's Beach, Kapiolani Park, RUN: Transition area, to Monsarrat Ave., to Paki Ave., to Kalakaua Ave., 2 loops inside park, to end mauka of bandstand inside Queen Kapiolani Park. BIKE: Start on Kalakaua Ave., near Queen Kapiolani Park Bandstand, to Kalakaua Ave., to Dia-mond Hd. Rd., to 18th Ave., to Kilauea Ave., to Makaiwa St., to Moho St., to Kealaolu Ave., to Kahala Ave., to Paikau St., to Diamond Hd. Rd., to 18th Ave., to Kilauea Ave., to Makaiwa St., to Moho St., to Kealaolu Ave., to Kahala Ave., to Diamond Hd. Rd., to Kalakaua Ave., to end at Bandstand transition area, Contact: KC Carlberg 371-4532. For more info, visit their website: <https://nawahineracinghi.com/na-wahine-festival/> Email: tryfitness@hawaii.rr.com



Halekulani
On the Beach at Waikiki



Seasonal Alliance of Flavors at La Mer

Embodying the tradition of excellence, award-winning La Mer continues to set culinary trends while keeping the classical technique of Neo-Classic French Cuisine.

(starting July 11th) **Tuesday** through Saturday | 5:30 – 8:30 pm

Visit www.halekulani.com/dining/la-mer/ for more information. To book, please call 808-518-2019.



Art of Wellbeing Promotion - July

July 8 – Summer Meals Made Simply

Join this fun class to learn easy tips and tools for eating light, staying fit and energized through the season.

Enhance any SpaHalekulani massage by adding in a Knesko collagen mask to your treatment. These masks are designed to brighten (Diamond), firm (NanoGold), or hydrate (Amethyst). There is also an eye-mask add-in option.

For more information, or to make a reservation for the above, please contact the spa reception desk at 808-931-5322.



Family Plan

Summer is here – bring the family and received a special rate on the second room.

- Minimum three-night stay
- Ocean View, Oceanfront, & Diamond Head Oceanfront rooms
- Categories and dates of stay must be the same for both rooms.
- For You, Everything – comp access to art and cultural venues
- Valid now through December 20, 2023

For more information, please contact reservations@halekulani.com.



Spotlight on Hawaiian Indigo

While indigo may be associated with India and other East Asian communities, here on Oahu a signature indigo is enhanced by the dazzling sunshine and rich, pure water, creating a bespoke array of blues mirroring the glassy waves and blue skies.

Read about it in this month's blog at Halekulani.com, or check out unique gifts dipped in these special hues, found exclusively in our logo boutique in store or online.



Halepuna
 WAIKIKI
 by Halekulani



Bed & Breakfast

Enjoy a staycation at Halepuna with daily breakfast at *UMI by Vikram Garg* for up to two persons.

- No Resort fee
- Halepuna Access – Complimentary access to the Bishop Museum, Honolulu Museum of Arts, and Manoa Heritage Center.

Valid now through December 20, 2023 with exception of blackout dates, please contact reservations@halepuna.com to book this special rate.



Halekulani Bakery

A culmination of art and science, enjoy artisan breads, a contemporary coffee bar with specialty coffees, pastry pairings, savory bites, and our Halekulani Coconut cake.

Find your new favorite pastry!
 Wednesday – Sunday
 6:30 am to 11:30 am

For more information, visit:
www.halekulani.com/dining/halekulani-bakery/



UMI by Vikram Garg

Global restaurateur and chef innovator, Vikram Garg, offers a decadent tribute to the abundance of the sea, called the 'Ocean's Harvest'. Savor masterful dishes such as the *Scallop Carpaccio*, *Cucumber Namasu*, *Dashi*. A la Carte and Chef Tasting menus available.

Breakfast is served Daily:
 7:00 am to 11:00 am
 (last seating is 10:30am)
 Dinner is served Wednesday-Sunday:
 5:30 pm to 10:00 pm
 (last seating is 8:30 pm)
 Attire: Smart Casual

(808) 744-4244 | www.umibyvikramgarg.com
 @umi_vikramgarg



Halepuna Access

Spotlight on Manoa Heritage Center:

Nestled in the Manoa Valley, you'll find a 3.5-acre living classroom dedicated to promoting the understanding of Hawaii's natural and cultural heritage. Tours are offered weekly. Please visit the Halepuna Front Desk for assistance

By showing their room key, guests can enjoy complimentary admission to three of Oahu's greatest cultural venues, The Bishop Museum, Manoa Heritage Center, and Honolulu Museum of Art.



Hawai'i Convention Center Welcomes Comic Con Honolulu



Comic Con Honolulu will be held at the Hawai'i Convention Center from August 4-6, drawing thousands of attendees from across the state to celebrate comics, costumes, fantasy, sci-fi and more.

All genres are welcome at this annual family-friendly event, which includes fan panels, a costume competition, industry guests, video games, table-top games and autograph opportunities. Booths featuring local artists and licensed merchandise dealers will also be available.

A three-day membership is \$70 per person. Pre-registration is available at comicconhonolulu.com.

And Made in Hawai'i Festival

The Center is welcoming the Made in Hawai'i Festival for the first time from August 18-20. In its 29th year, the festival will feature vendors, live music, and demonstrations from well-known local chefs. Guests ages 21 and older can also enjoy the festival's first-ever beer garden, featuring the work of local breweries.

Tickets are \$8 per day and go on sale August 4 at madeinhawaiifestival.com.



Hilton Hawaiian Village Waikiki Beach Resort Announces

Fourth of July Weekend Celebration June 30 - July 2

Guests and locals are invited to celebrate with food, entertainment, music and fireworks

Hilton Hawaiian Village Waikiki Beach Resort is excited to announce its upcoming Fourth of July Weekend Celebration in partnership with Country 97.5. The celebration will take place from June 30 to July 2, offering guests and visitors an unforgettable experience filled with entertainment, music, food, and fireworks.

Friday, June 30

- **Polynesian Revue**

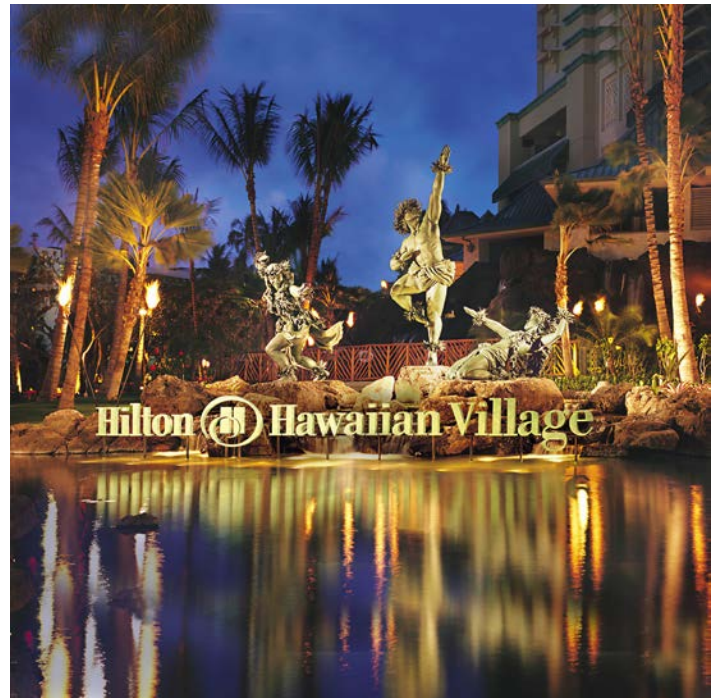
Kicking off the festivities on Friday, guests can immerse themselves in a Polynesian Revue at the Super Pool. With an admission fee of \$25, inclusive of one beverage, attendees can enjoy Polynesian song and dance starting at 7:15 p.m. (doors open at 6:45 p.m.). The evening will culminate with the resort's weekly Friday Night Fireworks display at 8 p.m.

- **Live Music**

From 8 to 11 p.m., guests can groove to the beats of DJ Wu Chang at Tropics Bar & Grill, ensuring an unforgettable evening. Additionally, the Paradise Lounge and Tapa Bar will be featuring live music throughout the night, creating the perfect ambiance to relax and unwind.

- **'Ono Grindz Food Truck**

For the afterhours crowd—Hilton's food truck will be parked in the main lobby porte cochere selling corn dogs, ice cream and other favorite July Fourth fare.



Saturday, July 1

- **Summer Mele Series**

On Saturday, the Summer Mele continues with live music at Tapa Bar from 1 to 10 p.m. Guests can enjoy a delightful afternoon and evening filled with captivating melodies and delicious cocktails and bites. Featured artists will include Deah Duo (1 to 3 p.m.), Dave Young Band (4 to 6 p.m.), and Pocket (7 to 10 p.m.).



Sunday, July 2

- **Tapa Bar Concert**

As the celebration progresses to Sunday, July 2, Hilton Hawaiian Village invites everyone to indulge in the lively rhythms of the Tapa Bar, featuring live music from 3 to 9:30 p.m. with artists such as Pirhana; DJ Wu Chang; and Hawaii's queen of country, Dita Holifield performing with Jared Ming. The highlight of the evening will be a special performance by the headliner, B.E.T., from 5:30 to 7 p.m.

- **Kids' Event on the Village Green**

For families looking for a fun-filled experience, Hilton Hawaiian Village will also offer a Kids' Event on the Village Green on July 2. Children can enjoy face painting, games, and other exciting activities while Kaiona Duo provides live entertainment. The Kids' Event promises to keep the little ones entertained and engaged throughout the weekend.

For more information and updates on the Fourth of July Weekend Celebration at Hilton Hawaiian Village, please visit hiltonhawaiianvillage.com.

INTERNATIONAL MARKET PLACE

What's New in July at International Market Place



STRIPSTEAK Waikiki to host sake tasting event with Master of Sake, Stuart Morris.

Experience the vibrance of Waikiki at **International Market Place**—a captivating open-air hub where shopping, dining, and entertainment live in harmony. Beyond the impressive slate of recurring events happening at International Market Place, each month brings new and unique experiences for locals and visitors alike.

Master of Sake, Wine Dinner

Join **STRIPSTEAK Waikiki** on **Friday, July 14** for a special, one-night-only, sake pairing dinner presented by MINA Group's premier globally renowned Master of Sake, Stuart Morris.

This exclusive event will showcase a delectable 5-course dinner with sake pairings. Join Stuart as he takes diners on a journey through Japan via his favorite sake as well as his proprietary sake line produced in Japan's Yamagata prefecture. View the full menu and book tickets [HERE](#).



New Stores

Find the latest on-trend jewelry at **Lovisa**, where they are driven by passion for the perfect accessory. A fashion-forward jewelry brand that caters to everybody, welcoming 150+ new styles available in store each week. Coming soon on Level 1, Queen's Court.



GoldenEye is a revolutionary sunglass store committed to carrying the world's best assortment of sport performance eyewear. It is a destination for athletes, outdoor enthusiasts, and anyone interested in improving their overall experience with the right choice in sport sunglasses. Now open daily from 10 a.m. to 8 p.m. on Level 2.

Hokkaido Ramen Festival

Now through July 30, Mitsuwa Marketplace hosts the Hokkaido Ramen Festival pop up, featuring authentic ramen from Hokkaido. Every two weeks, enjoy 3 different ramen bowls starting at only \$10 each, plus receive one hour of free parking validation with a \$10+ purchase. Located on Level 1, open daily from 9 a.m. to 10 p.m.

For more information, visit shopinternationalmarketplace.com.

MOANA SURFRIDER, A WESTIN RESORT & SPA BRINGS BACK POPULAR BREAKFAST BUFFET



HONOLULU – June 26, 2023 – After more than three years, the popular breakfast buffet at the Moana Surfrider, A Westin Resort & Spa, has returned. It is the first buffet to return within Marriott’s Waikiki Collection of hotels that also includes Sheraton Princess Kaiulani, Sheraton Waikiki and The Royal Hawaiian, a Luxury Collection Resort.

The buffet offers guests a wide selection of hot and cold selections including eggs benedict, salad, smoked salmon, breads, fruits, juices, breakfast favorites like bacon, local-style fried rice, an omelet station, and the Moana’s signature “beautiful pancakes,” and mochi waffles. The Japanese breakfast station also returns on the buffet with items such as broiled or misoyaki salmon, pickled vegetables, miso soup and natto.

The price of the buffet is \$44 for adults and \$22 for children under 12. In addition to the buffet, the Veranda’s a la carte breakfast menu is also available daily, between 6 and 10:30 a.m. For more information, please visit www.verandawaikiki.com/.



WAIKIKI
BEACH WALK. NEWS, NOTES & HAPPENINGS from Waikiki Beach Walk

Comingupcoming

SUMMER SPECIALS AT WAIKIKI BEACH WALK

Start the summer off strong with a tasty new menu, sustainable summer deals and internationally acclaimed entertainment at [Waikiki Beach Walk](#). Nestled in the heart of Hawaii, this noteworthy destination offers a collection of unique shopping choices, locally crafted treasures and acclaimed dining establishments.

[Ruth's Chris Steak House](#)– Now Introducing Lunch

This Waikiki Beach Walk standout launches its lunch menu on Fridays and Saturdays featuring favorites like the signature Filet Mignon, Steak and Frites and Ruth's Cheeseburger. Also available is a delicious Prix Fixe meal including a salad, filet and shrimp and accompaniment for \$52. Each cut of steak is chosen for its ideal thickness, tenderness, and rich marbling, ensuring an exceptional dining experience. Available from 11 a.m. to 3 p.m. on Friday and Saturday.



[Mele Hali'a](#)

Experience the enchantment of **Mele Hali'a** as Waikiki Beach Walk presents a showcase of Hawaiian musical talent. Join us on **Sunday, July 23** from **5 to 6 p.m.** for an unforgettable performance by **Bobby Moderow, Jr.**, a celebrated musician, singer-songwriter, and masterful slack key guitarist. Born and raised on Oahu, he has been immersed in the world of music since the age of 9. As a founding member of Maunalua, a six-time Nā Hōkū Hanohano Award-winner, Bobby is a respected artist in the realm of slack key and falsetto. Don't miss this opportunity to share in the joy of music with one of Hawaii's most exceptional and acclaimed talents, and mark your calendars for **Sunday, August 20**, when Waikiki Beach Walk welcomes **Jerry Santos** and **Kamuela Kimokea**, featuring hula by **Kawaikapuokalani Hewett**.

[Sustainable Summer](#)



In support of Mālama Hawaii, from **now through August 31** Waikiki Beach Walk is partnering with Outrigger Hospitality Group and its "Sustainable Summer" campaign by highlighting sustainable products, practices and community events. Visit the website for more details and upcoming events: <https://www.outrigger.com/sustainablesummer>

At **Keep It Simple** you can do your part to help clean our beloved beaches. Rent a sand sifter for \$5, take a picture while using it and tag @keepitsimplehonolulu to receive your choice of a 15% store discount or a free body scrub.

KaiAloha Supply was founded with the goal of providing apparel and accessories for people who love, respect, protect, and have compassion for the ocean and its beauty, and to have Aloha in everything they do. Purchase any item from their store for the option to additionally purchase a durable and reusable canvas tote. The small tote is just \$2 or \$3 for the large, and KaiAloha will contribute \$1 to a local environmental nonprofit for every bag sold. Limited to one tote per customer.

WAIKIKI BEACH WALK • 226/227 Lewers St. Waikiki. Open Daily. www.waikikibeachwalk.com



fg

FOOD GURUS
HAWAII

We Move Brands Off Shelves & Into Hearts

Food Gurus is Hawaii's Food & Beverage Marketing Specialist.
One -Stop Comprehensive Creative, Digital, Marketing &
Publicity Customized Solutions.



foodgurususa.com

Contact us for a free consultation
Doug Harris - doug@digivortex.com | (808) 946-4626



RESTAURANT SUNTORY
JAPANESE CUISINE

**RESTAURANT SUNTORY ANNOUNCES NEW GRAND MENU
COMPRISED OF ONLY THE FINEST ELEMENTS OF JAPANESE CUISINE**

Diners will find both their spirits and their stomachs satisfied through the essence of Wagen Aigo (meaning “A Peaceful Smile and Kind Words”) found in the re-envisioned grand menu.



Images for illustration purposes only. Items may vary by season.

[Restaurant Suntory](#) has lots of joyous news to share this summer. Not only has it received the Silver Award for the Best Overall Japanese Restaurant and the Bronze Award for the Best Oahu Restaurant in the Hale Aina Awards, but it is also excited to announce the unveiling of its re-envisioned Grand Menu. Driven by season and style, the new menu takes diners on a culinary journey, where each bite tells a story of flavor and finesse.

Diners can explore new [lunch offerings](#), such as the Hanakago-zen set (pictured left above), which is full of classic dishes that will surely satisfy guests’ cravings for Japanese food, and the Weekly Special, which presents an ever-changing rotation of the himono (dried fish) set and donburi (rice bowl) set. Along with the new lunch offerings, Restaurant Suntory has also renewed their kaiseki [course meals](#), offering a more seasonal assortment of exclusive delicacies crafted from meticulously sourced ingredients, many straight from Japan. Among the courses is the Irodori Course (pictured right above), a colorful, seasonal kamameshi (traditional iron-pot rice dish) set which reflects the seasons of Japan with the freshest ingredients. With elements of superior quality like wagyu beef and sea urchin, the kaiseki courses are perfect for special occasions, from celebrating with family to dazzling guests.

The icing on the cake of this re-envisioned menu is the two new [desserts](#): monaka, a classic Japanese ice cream dessert elevated with red bean paste and fresh fruit, and the Macademia Nuts Crème Brûlée, which offers a local twist with its flavorful topping. Other indulgences await diners as well.

The grand menu promises to delight and surprise even the most discerning gourmand with an unforgettable culinary experience, where every dish is a masterpiece, and every visit is a feast for the senses that leaves diners craving more. Make a reservation through [RESY](#) or over the phone at (808) 922-5511 to embark on this exciting culinary journey. Restaurant Suntory is located in Bldg. B on level 3 of [Royal Hawaiian Center](#).

Steel Guitar Week & Summer Stargazing at Royal Hawaiian Center this July

2023 Waikīkī Steel Guitar Week

JULY 10 - 15, 2023

Waikīkī Steel Guitar Week returns to Royal Hawaiian Center's Royal Grove stage from July 10-15, 2023.

A celebration like no other, Waikīkī Steel Guitar Week features amazing local talent from across the pae'āina (Hawaiian Islands), Monday through Thursday, July 10-13 2023.

On Friday, July 14, 2023, a suite of Japan-based steel guitarists will take the stage.. The celebration ends with a Steel Guitar Ho'olaule'a on Saturday, July 15. The week-long line-up will feature popular Hawai'i Steel Guitar masters, international guest artists, as well as the talents of young steel guitarists and live hula performances.

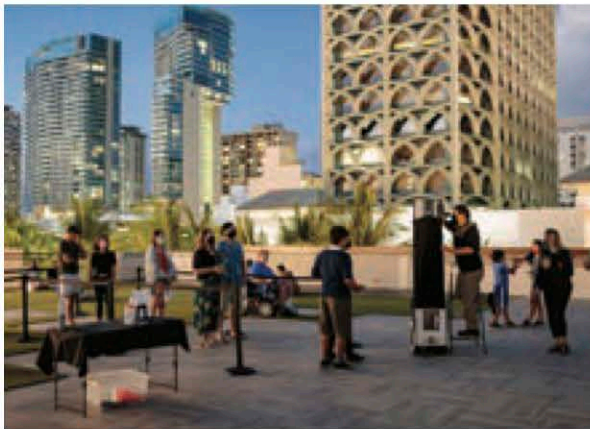
Waikīkī Steel Guitar Week is presented by Royal Hawaiian Center in partnership with the Hawai'i Institute for Music Enrichment and Learning Experiences (HIMELE™) and Alan Akaka.

Limited seating. Lawn seating available, bring your own mat. Standard parking rates apply. Special parking promotion for Kama'āina and Military.



For the complete line-up and additional information, visit www.royalhawaiiancenter.com/events.

All programming is subject to change or cancellation.



FREE Stargazing in Paradise

JUNE 30, 2023 | AT 7:15PM - 9:15PM | BUILDING A, LEVEL 4

Join Astronomer Nick Bradley and embark on a captivating journey through the enchanting Hawaiian night sky! Witness the awe-inspiring beauty of the moon and stars on July 27 from 7:15pm - 9:15pm, at the monthly Rooftop Stargazing event on the Ka Lewa Lānai located in Building A, Level 4.

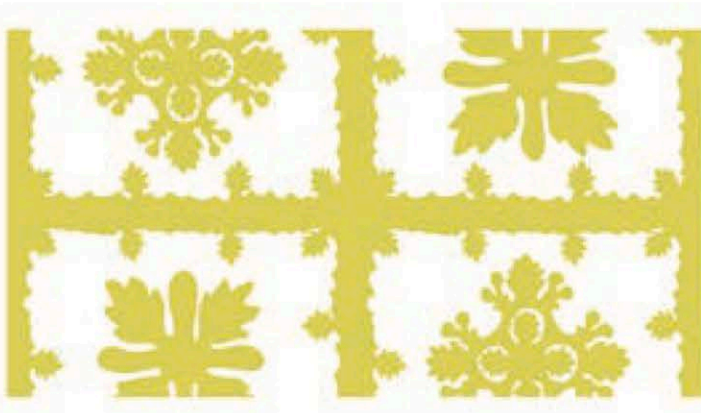
The event is free and open to the public, welcoming stargazers of all ages, including children. Please note that telescope viewing is available on a first-come, first-served basis. Don't pass up this extraordinary chance to behold the celestial wonders with Stargazers of Hawaii.

To learn more, visit www.royalhawaiiancenter.com/events/rooftop-stargazing.

Mālama Hawai'i Makers Market

JULY 7, 2023 | 3PM - 8PM

Discover a thoughtfully curated collection of local artists, makers, designers, collectors, and food vendors at the Mālama Hawai'i Makers Market. Immerse yourself in the beauty of Christian Bendo Art's stunning resin artwork on native wood, indulge in the charm of Miriam Quijano Designs' handcrafted personalized jewelry, and explore the uniqueness of Izett Studio's hand-painted, island-inspired ornaments. The Market is open to the public and free to attend. The pop-up market will be held in Building C, Level 3 next to Noi Thai Cuisine and the Waikiki Food Hall on July 7, 2023 from 3pm - 8pm. The event welcomes everyone to experience a local, island-inspired array of goods from up to 20 distinct vendors. To learn more, visit www.royalhawaiiancenter.com/events.



Exclusive July Gift with Purchase

JULY 2023

Don't miss out on the exclusive Gift with Purchase promotion happening at Royal Hawaiian Center this July! Shoppers will have the opportunity to receive a stylish splash proof pouch and a trendy reusable bag. This limited-time offer showcases the talent of local artist Hailey Medlock. Her captivating artwork is featured on both the splash proof pouch and the reusable bag, adding a touch of Hawai'i's unique artistic flair to everyday essentials. Be sure to take advantage of this exciting offer, available only for a limited time in July.

Royal Hawaiian Center x Hawaiian Airlines: Earn Miles while Dining!

JULY 28-29, 2023

Introducing the exciting collaboration between Royal Hawaiian Center (RHC) and Hawaiian Airlines!



On July 28 and 29, shoppers can earn HawaiianMiles while indulging in a delightful dining experience at select RHC establishments. Simply spend up to \$100 in total at participating restaurants, food court tenants, and specialty eateries like Dean & DeLuca and Honolulu Cookie Company, to start earning miles. For every dollar spent, customers will receive 5 miles credited to their HawaiianMiles account.

But here's the best part: if the Royal Hawaiian Center merchant is already a HawaiianMiles partner, guests can redeem double miles, maximizing their rewards.

Don't miss out on this incredible opportunity to enjoy exquisite dining experiences while getting closer to your next Hawaiian Airlines adventure. To learn more, visit www.royalhawaiiancenter.com.

For a full list of events, visit www.royalhawaiiancenter.com/events. For updates on new stores and restaurants, follow Royal Hawaiian Center on social media (@royalhwncr) or visit the website at www.royalhawaiiancenter.com.

JULY



IULAI 2023 | HELU 'UMIKUMĀIWA

LĀ PULE SUNDAY	PŌ'AKAHI MONDAY	PŌ'ALUA TUESDAY	PŌ'AKOLU WEDNESDAY	PŌ'AHĀ THURSDAY	PŌ'ALIMA FRIDAY	PŌ'AONO SATURDAY
						1 3:30 PM - 4:30PM G1 Keiki Hula Performance 5:30 PM - 6:30PM G1 Hula Kahiko Performance
2	3 11AM - 12PM G1 'Ukulele Lesson	4 11AM - 12PM G1 Hula Lesson 5:30 PM - 6:30PM G1 Kawika Trask Trio Performance	5 11AM - 12PM C2 Lauhala Lesson 5:30 PM - 6:30PM G1 Pu'uhonua Performance	6 11AM G1 Keiki Hula Lesson 5:30 PM - 6:30PM G1 Kawika Trask Trio Performance	7 12PM - 1PM C2 Lei Making Lesson 3PM-6PM C3 Mālama Hawai'i Makers Market 5:30 PM - 6:30PM G1 Malu Productions Performance	8 3:30 PM - 4:30PM G1 Keiki Hula Performance 5:30 PM - 6:30PM G1 Hula Kahiko Performance
9	10 11AM - 12PM G1 'Ukulele Lesson	11 11AM - 12PM G1 Hula Lesson 5:30 PM - 6:30PM G1 Kawika Trask Trio Performance	12 11AM - 12PM C2 Lauhala Lesson 5:30 PM - 6:30PM G1 Pu'uhonua Performance	13 11AM G1 Keiki Hula Lesson 5:30 PM - 6:30PM G1 Kawika Trask Trio Performance	14 12PM - 1PM C2 Lei Making Lesson 5:30 PM - 6:30PM G1 Malu Productions Performance	15 3:30 PM - 4:30PM G1 Keiki Hula Performance 5:30 PM - 6:30PM G1 Hula Kahiko Performance
16	17 11AM - 12PM G1 'Ukulele Lesson	18 11AM - 12PM G1 Hula Lesson 5:30 PM - 6:30PM G1 Kawika Trask Trio Performance	19 11AM - 12PM C2 Lauhala Lesson 5:30 PM - 6:30PM G1 Pu'uhonua Performance	20 11AM G1 Keiki Hula Lesson 5:30 PM - 6:30PM G1 Kawika Trask Trio Performance	21 12PM - 1PM C2 Lei Making Lesson 5:30 PM - 6:30PM G1 Malu Productions Performance	22 3:30 PM - 4:30PM G1 Keiki Hula Performance 5:30 PM - 6:30PM G1 Hula Kahiko Performance
23	24 11AM - 12PM G1 'Ukulele Lesson	25 11AM - 12PM G1 Hula Lesson 5:30 PM - 6:30PM G1 Kawika Trask Trio Performance	26 11AM - 12PM C2 Lauhala Lesson 5:30 PM - 6:30PM G1 Pu'uhonua Performance	27 11AM G1 Keiki Hula Lesson 5:30 PM - 6:30PM G1 Kawika Trask Trio Performance	28 12PM - 1PM C2 Lei Making Lesson 5:30 PM - 6:30PM G1 Malu Productions Performance	29 3:30 PM - 4:30PM G1 Keiki Hula Performance 5:30 PM - 6:30PM G1 Hula Kahiko Performance
30	31 11AM - 12PM G1 'Ukulele Lesson				LOCAL INFORMATION A3: Building A, 3rd Floor C2: Building C, 2nd Floor C3: Building C, 3rd Floor G1: The Grove Stage HH: Helumoa Hale For more information, call Helumoa Hale Guest Services. (808 922-2299)	

AWARD-WINNING SPLASH BAR CRAFTING SUMMER BEER PAIRING COLLABORATION

HONOLULU – June 26, 2023 – Nearly two months after receiving the coveted Hale ‘Aina Gold Award from HONOLULU Magazine for Best Bar Food, Splash Bar at Sheraton Princess Kaiulani presents its summer collaboration dinner in conjunction with Kona Brewing Company. The four-course beer pairing feast, served family style, will be held on Friday, July 28 at 5:30 p.m.

The majority of Chefs Blake Kajiwaru and Vicky Nguyen’s menus is locally sourced, and designed to bring out the balanced crispness that is the hallmark of Kona Brewing Company beers.

“Over the past year, we have been revamping our selections and with the recent changes, we now have a solid menu base to build on – and offer elevated dishes,” said Chef Kajiwaru, who also serves as Sheraton Princess

Kaiulani’s director of restaurant operations. The fresh, island-inspired flavors, al fresco atmosphere and live entertainment under the stars make it one of the best poolside experiences in the heart of Waikiki. The cost of the dinner is \$85 per person (tax and gratuity additional).

For more information, please see www.splashbarwaikiki.com.



SPLASH BAR

Celebrating Summer & Ohana Style Dining in Collaboration with Kona Brewing Co...
Chefs Blake and Vicky - Gold Winner of 2023 Hale Aina Awards for Best Bar Food - Family Style Feast

Friday, July 28, 2023 | Starts at 5:30pm | Tickets \$85+

Appetizers

Goosepoint Oysters with Ginger Nuoc Cham
Scallion Oil & Toasted Rice Powder
Pipeline Porter

Salad

Grilled Kauai Head-On Prawns with
Hamakua Mushroom & Hearts of Palm Salad
Kona Light

Entrée

Surf & Turf
Grilled Banana Leaf Kampachi w/ Lemongrass,
Turmeric & Sweet Basil
Smoked Pork Belly Burnt Ends w/ Guava Lehua Honey Glaze
Scallion Rice, Roasted Sweet Potato, Kahuku Corn,
Pa'akai Pilsner & Lavaman

Dessert

Mochi Malasadas with
Coconut Ice Cream & Kaffir Lime Sauce
Wailua Wheat



Satisfy your sweet craving at

the Waikiki

SHOPPING PLAZA

Honolulu Cookie Company



Buho Cantina
Royal Lobster
Sky Waikiki
Starbucks
STIX ASIA
Tanaka of Tokyo

K Street Food



Nana's Green Tea



ao Gelato



Parking Lot and Building Hours: 6:30am - 12am
2250 Kalakaua Ave, Honolulu, HI 96815
waikikishoppingplaza.com/dining



WAIKĪKĪ IMPROVEMENT ASSOCIATION

Wikiwiki Wire is published on the first Monday of each month. If you would like to share your news with other members, please send your info to: editor@waikikiimprovement.com.

Submission Deadline

Waikīkī-related news and information submitted by members (or their PR agencies) for the Wikiwiki Wire newsletter should be received no later than **5 PM MONDAY, ONE WEEK PRIOR** to the newsletter's publication and distribution on the first Monday of each month.

News & Stories: Please submit any Waikīkī-related stories/articles as a Word doc and include photos to accompany stories/ articles. For best results, please upload photos as a separate JPEG attachment - maximum 2 MB each image.

Flyers/PDFs: Waikīkī-related flyers are welcome but must look like advertising flyers and not press releases. Please format flyers to an 8.5" x 11" size and submit them in a PDF format.

Press Releases: Please submit Waikīkī-related press releases as a Word doc. Press Releases that do not fit within one page of the Wikiwiki Wire newsletter will be returned for editing.

Photos: For best results, please upload photos as a separate JPEG attachment - maximum 2 MB each image.



WAIKĪKĪ IMPROVEMENT ASSOCIATION

We are a cross-section of business, government and the community; our members care about the future of this special place - Waikīkī.

For more than 40 years, the Waikiki Improvement Association has remained true to its objective: to improve, enrich and beautify Waikīkī for the benefit of residents and visitors alike and to promote conditions conducive to the economic and cultural good and for the betterment of the entire community.

HAWAIIAN DIACRITICAL MARKS

Waikīkī Improvement Association recognizes the use of diacritical marks (i.e., glottal stop (ʻ), macron (ā) in place names of Hawaiʻi, such as Waikīkī and Kalākaua Avenue and will include them whenever possible. We also respect the individual use (or not) of these markings for names of organizations and businesses.

There will also be times when we may not have a chance to add or change the markings in all of the articles submitted and when that happens, e kala mai.