



WAIKĪKĪ IMPROVEMENT ASSOCIATION

Wikiwiki Wire

E-newsletter keeping you up-to-date on Waikīkī news, features, trends and more!



Contents

3
SAFE AND SOUND WAIKĪKĪ -
MONTH FOUR

5
WAIKĪKĪ MARKET GRAND
OPENING SET FOR JANUARY
11TH AT LILIA WAIKĪKĪ

10
STREET ACTIVITY IN & NEAR
WAIKĪKĪ

MORE WAIKĪKĪ NEWS, EVENTS & FOOD

CITY & COUNTY OF HONOLULU -
NEW PRESSURE WASHING GUIDANCE
AVAILABLE

CELEBRATE 2023 AT LA MER

HALEKULANI BAKERY IS NOW OPEN!

HAPPY NEW YEAR FROM THE HAWAI'I
CONVENTION CENTER

ENTERTAINMENT EVERY NIGHT AT
HILTON HAWAIIAN VILLAGE, WAIKIKI
BEACH RESORT

JANUARY NEWS FROM INTERNATIONAL
MARKET PLACE!

BEGIN THE NEW YEAR CELEBRATING ART
& CULTURE AT WAIKIKI BEACH WALK

LUCKY BAGS & LUNAR NEW YEAR AT
ROYAL HAWAIIAN CENTER

Waikiki Safe and Sound - Month Four



The Safe and Sound Waikīkī has racked up a number of small victories thanks to the efforts of the Blangiardi Administration, City Prosecutor Steve Alm and the Honolulu Police Department (HPD). According to Prosecutor Alm, through December 31st, 292 misdemeanor and 23 felonies were charged and to date 24 misdemeanor and 3 felony cases have resulted in geographic restrictions. Some of the most chronic offenders are out of Waikīkī at least temporarily.

Honolulu Police Department District 6 (Waikīkī) Major Randall Platt said, "Safe and Sound Waikiki, I think has been moderately successful so far. HPD handles primarily the 'Safe' or enforcement part, the program helps us with 1) getting high bail for offenses and 2) immediate charging for most drug and property crime felony cases. 'High bail' for misdemeanor and petty misdemeanor is \$1000, which is better than the \$50 we used to get. So, offenders who can't make bail are typically held overnight and taken to court the following day. For felony drug cases we're getting \$35-50K instead of the usual \$11K. The felony drug cases get charged instead of RPI'd (released pending investigation). The struggle is that once they're given a court date, they're released to appear, and many go back to Waikiki. So in reality, it takes them off the street for a very short time. We are getting some judges to grant geographic restrictions (GRs), but they're typically ignored by the suspects, and they go back to Waikiki. We then have to document that they're in violation of the GR and it takes a while before a warrant gets issued for that. We are working with the prosecutors to make the GRs more effective. So Safe and

Sound is far from perfect. It's a work in progress and while we've made some gains, there is much work still to do."

Kūhiō Beach Park Pavilion #4 identified by the community as a hot spot in attracting 'undesirable elements' has undergone a clean-up and landscaping by the City Parks Department fulfilling a commitment made by Mayor Blangiardi. Dave Willard of the Waikīkī Business Improvement District Association (WBIDA) added, "In October of 2022 the (WBIDA) Aloha Ambassadors began spending extra time around Pavilion #4. Since the Biki



bike rental station was installed our statistics for providing information at that location has gone way up. As people come in to rent a bike, they always have questions, 'How far is it to Diamond Head Lookout, or What time is low tide today?' The addition of the bike rental station in support of Safe and Sound Waikiki has been a benefit to this end of Kūhiō Beach. This is a great example of how positive activation of public spaces can support public safety."

Jennifer Nakayama, WBIDA President and the chair of the community Safe and Sound Waikīkī Steering Committee is leaving Hawaii for a new position on the mainland. The most recent meeting of the committee, on January 4th 2023, appointed Rick Egged, Waikīkī Improvement Association President and Dave Willard Interim Executive Director of the WBIDA as co-chairs.

Mufi Hannemann, Hawaii Lodging & Tourism Association (HLTA) President, said, "The Waikiki community was in desperate need of a public safety initiative that would address crime and improve the area via social programs. Through a persistent and collaborative effort that brought together the public, private and nonprofit sectors, Safe & Sound Waikiki was born. In the four months since it started, the program has continued to improve and will be a significant asset to our community once it is fully launched." Former Mayor Hannemann has led the communities' efforts to increase public safety that has led to the creation of Safe and Sound Waikīkī.



Waikiki Market Grand Opening Set for January 11th

The Waikiki Market is excited to announce the opening of a new full-service grocery and dining experience on January 11, 2023. The brand-new world-class grocery store and dining facility will be offering an extensive variety of food choices. Included is a vast selection of locally grown and locally made products, meats, seafood, bakery, deli and produce items. Waikiki Market will also be showcasing Hawaii's unique food culture and history at four prepared food stations, "Poke", "Rice", "Local Plates" and the "Bake Shop".



Waikiki Market is operated by Food Pantry Ltd and is located on the second floor of the dynamic new Lilia Waikiki. The Kuhio street level will house the Piko Kitchen and Bar which will offer Hawaiian style comfort food and drinks for a local pau hana crowd.

"As a local company, we're proud to have the opportunity to share the foods and flavors we love here in Hawaii with residents and visitors alike. There is something here for everyone, whether



they want food to take to the beach, an easy dinner, gifts to take home, or ingredients to cook. We think the community will love having a quality grocery store of their own again right here in Waikiki," said Brad Iwasaki, General Manager of parent company Food Pantry.

"The opening of Waikiki Market marks the return of Waikiki's only full-service, locally owned grocery store and we are grateful that Food Pantry chose Lilia Waikiki as it's new home," said Kris Hui, Senior Vice President at Brookfield Properties. "This shopping and dining experience is unlike anything in Waikiki and we are thrilled to have the world class Waikiki Market at Lilia Waikiki."

Rick Egged, President of the Waikiki Improvement Association, said, "The Waikiki Market provides quality food products that will be enjoyed by residents and visitors alike. The Lilia Waikiki and Waikiki Market are the latest exciting additions to the revitalization of Waikiki."

Waikiki Hula Show

AT THE KUHIO BEACH HULA MOUND



**THE KUHIO BEACH HULA SHOW HAS BEEN SUSPENDED
PENDING FUNDING CONFIRMATION.**

Please check our website at www.waikikiimprovement.com for future updates.

STREET ACTIVITY

IN AND NEAR WAIKĪKĪ (COURTESY OF THE CITY)

DR. MARTIN LUTHER KING JR. DAY PARADE

January 16, 2023 Monday

8:30 AM Roads Close | 12:30 PM Roads Open (Approximate)

DR. MARTIN LUTHER KING JR. DAY PARADE sponsored by Martin Luther King Coalition. This is a First Amendment activity and is expected to have 1,200 marchers, 30 vehicles, 2 floats, and 3 bands. It will start at Ala Moana Park, to Ala Moana Blvd., to Kalakaua Ave., to Monsarrat Ave., end at Waikiki Shell Parking Lot in Queen Kapiolani Park. Lane closures start at 8:30 am. Contact: Patricia Anthony Rushing 384-4038 Fax: 693-9982.

CHAPSON DIAMOND HEAD DASH 8K RUN

January 22, 2023 Sunday

5:30 AM Lanes Close

9:30 AM Lanes Reopen (Approximate)

CHAPSON DIAMOND HEAD DASH 8K RUN sponsored by Mid-Pacific Road Runners Club. The event is expected to have 250 runners. It will start at Monsarrat Ave. near Waikiki Shell Lot 1, to Kalakaua Ave., to Diamond Head Rd., to Paikau Rd., to Diamond Head Rd., and return via same route to end at Kapiolani Park near the ewa-most turnaround. Contact: Joan Davis 535-9070 E-mail: joaniediva1@gmail.com

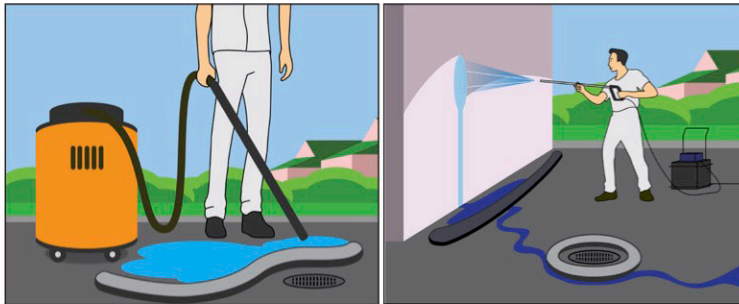
NEW PRESSURE WASHING GUIDANCE AVAILABLE

The City and County of Honolulu Storm Water Quality Division has released new resources on the correct methods of wash water disposal when pressure washing and assists businesses in preventing pollutants from entering the storm drain system and avoiding potential fines.

Handling Wash Water

The new guidance addresses wash water handling for common types of surfaces that businesses pressure wash including walkways, trash enclosures, parking lots, drive-thrus, building roofs, and building exteriors.

For some surfaces and circumstances, wash water can be filtered and allowed down the storm drain. For others, wash water needs to be collected and is not permitted to enter the storm drain.



Examples of wash water filtration and collection. Wash water should be handled based on the type of surface being pressure washed and whether soaps or chemicals are used.

Preparation

Steps to prepare for pressure washing for all types of surfaces include:

- sweeping up visible dirt and debris, and
- installing the appropriate drain protection devices such as barriers or filters.

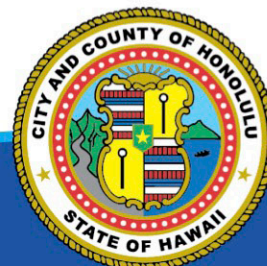
Training Videos

Short training videos for business or property managers are available on the new StormWaterPMToolkit.com webpage and can be shared with employees or contractors. Each video segment features a step-by-step breakdown of the pressure washing process by surface type, including the proper disposal of wash water.



Supply List

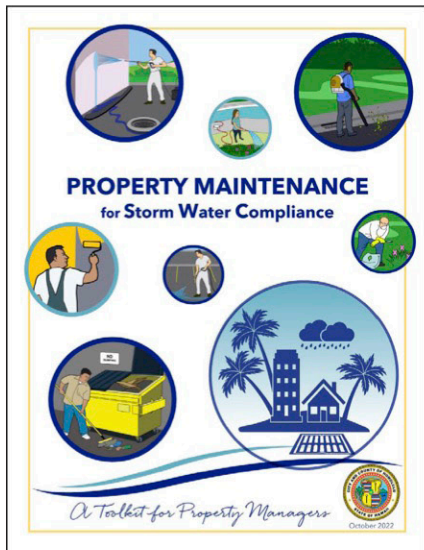
StormWaterPMToolkit.com also includes a list of [supplies](#) with the types of products that perform the needed filtering and blocking functions.



NEW PRESSURE WASHING GUIDANCE AVAILABLE

This guidance is part of a collection of new resources developed for property maintenance activities that affect storm water quality.

Individual handouts on practices for pressure washing different surface types and other resources are available on the new StormWaterPMToolkit.com webpage.

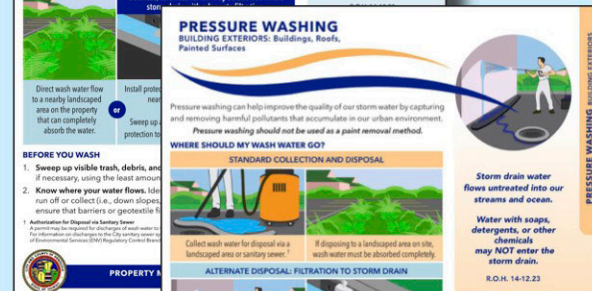
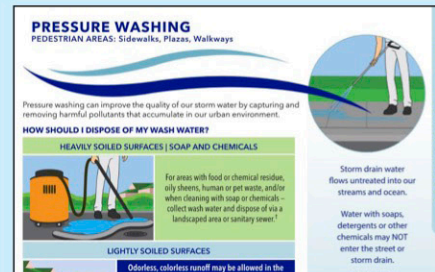


Property Maintenance for Storm Water Compliance booklet

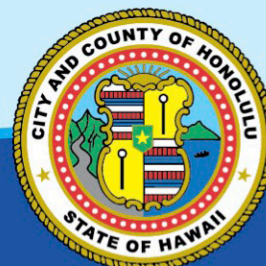
If you witness anything other than rainwater entering the City's streets or storm drains, please call the Environmental Concern Line at 808-768-3300.

City fines for unauthorized discharges can be up to \$25,000 per violation, per day.

R.O.H. 14-12.23 to 28



Pressure washing guidance pages available at StormWaterPMToolkit.com





Celebrate 2023 at La Mer

La Mer is the embodiment of our tradition of excellence as our vision continues in setting culinary trends while keeping the classical techniques of Neo-Classic French cuisine. Featuring a seasonal alliance of flavors while remaining centric to the islands, every detail is meticulously executed in creating an unforgettable experience, all in a heavenly oceanfront setting.



Art of Wellbeing Promotion - January

January 14 – Writing for Wellness

- Discover how expressive journaling can help overcome fear, pain and stress to support a balanced life. The one-hour discussion is open to the public and is \$25 per person.

Halekulani Supreme Pedicure

Our signature eco-friendly Waterless Pedicure is experienced in a Zero Gravity chair designed to place the body in a virtually weightless position which helps to relieve back pain and sore muscles. This indulgent pedicure includes nail, callus & cuticle care, scrub, masque, paraffin and polish. 75 minutes - \$120. Kamaainas receive 10% on salon services and 15% on spa services with valid Hawaii ID.

Please call 808-931-5322 for more information and to make a reservation.



Kamaaina Package 2023

Experience our "House Befitting Heaven," on the beach at Waikiki.

Exclusive rate: Partial Ocean View @ \$608 + taxes daily with upgrade to Ocean View (subject to availability at time of check-in). Rates are based on single / double occupancy.

- 4:00 pm late check out (based on availability upon departure date)
- Complimentary daily parking
- Complimentary access to some of Oahu's finest art & cultural venues
- Complimentary WiFi

Valid now through December 20, 2023 with exception of blackout dates. Please contact reservations@halekulani.com to book this special rate.



HALEKULANI BAKERY IS NOW OPEN!

Thursdays – Sundays
6:30 am – 11:30 am



HALEKULANI BAKERY

A culmination of art and science, the Halekulani Bakery features delectable artisan breads, a contemporary coffee bar with specialty coffees, pastry pairings, savory bites, and our Halekulani Coconut Cake.

The Salted Caramel Croissant and the Valrhona Chocolate Croissant are back, but we are also introducing some new items...Executive Pastry Chef Pauline Lam has created the Everything Croissant (her twist on the Everything Bagel) and the Mango Blueberry Muffin...a muffin which took 13 years to perfect.

Come and choose a new favorite today!



2023 KAMAAINA RATES

Indulge in sophisticated simplicity at Halepuna Waikiki.

Ocean View @ \$358 + taxes daily (subject to availability). Rates are based on single / double occupancy.

- 4:00 pm late check out (based on availability upon departure date)
- Complimentary daily parking
- Complimentary access to the Honolulu Museum of Art, Bishop Museum, and the Manoa Heritage Center
- Complimentary WiFi

Valid now through December 20, 2023 with exception of blackout dates. Please contact reservations@halepuna.com to book this special rate.



fg

**FOOD GURUS
HAWAII**

We Move Brands Off Shelves & Into Hearts

Food Gurus is Hawaii's Food & Beverage Marketing Specialist.
One -Stop Comprehensive Creative, Digital, Marketing &
Publicity Customized Solutions.

foodgurususa.com

Contact us for a free consultation
Doug Harris - doug@digivortex.com | (808) 946-4626



Happy New Year from the Hawaii Convention Center



As we ring in 2023, our staff would like to share its most heartfelt mahalo to the Waikiki community for its support during the past year. With the lifting of COVID-19 restrictions, the Center has enjoyed welcoming guests back with a robust lineup of local and citywide events.

On Dec. 17, 2022, the Center hosted its first-ever holiday concert featuring Na Leo Pilimehana and special guest Maunalua. Hundreds of guests attended for a beautiful dinner led by Executive Chef Hector Morales. The Center looks forward to welcoming Na Leo back again soon.

We also wrapped up 2022 by welcoming Governor-elect Josh Green and guests for an inauguration dinner in early December, as well as thousands of athletes for the Honolulu Marathon Expo in the days leading up to the Dec. 11, 2022, race.

2023 is kicking off with numerous local gatherings. The year starts with several notable sports events, including the TransPacific Volleyball Championships and the Varsity Spirit Championships.

Check the Center's events calendar online for updates throughout the year. We look forward to welcoming you all in 2023.



Entertainment

EVERY NIGHT



ON THE GREAT LAWN

HILTON HAWAIIAN VILLAGE® PRESENTS

WAIKIKI STARLIGHT LUAU

Fire knife dancers, live music and an authentic island feast—all under the stars. Upgrade to **Premier seating** for access to the first and second rows, a welcome beverage plus two drinks, and fresh flower lei greeting.

GOLDEN CIRCLE and GENERAL SEATING also available.

SCAN FOR
CURRENT SCHEDULE
& RESERVATIONS.



TAPA BAR



IN THE TAPA TOWER

LIVE MUSIC NIGHTLY

Sunday-Thursday 7-10 pm | Friday-Saturday 8-11 pm

A venue for icons of Hawaii's music scene, this is where you'll experience some of the finest local talent the islands have to offer. Join us for a fun-filled evening immersed in the heartbeat of Hawaii's music.

NOW SERVING

Smash Burgers, Nashville Hot Chicken, Pizzas and more!





TAPA BAR ENTERTAINMENT SCHEDULE: JANUARY 2023

Hilton Hawaiian Village Waikiki Beach Resort is proud to present the following top-notch, live music at the resort's Tapa Bar throughout the month of January:

Sunday, Jan. 1 7-10 p.m.	Juke Joint
Monday, Jan. 2 7-10 p.m.	Acoustik Playground Ft. Cherie Yuen
Tuesday, Jan. 3 7-10 p.m.	Acoustik Playground Ft. Stacie Kuulei
Wednesday, Jan. 4 7-10 p.m.	Juke Joint
Thursday, Jan. 5 7-10 p.m.	Kaiona Band
Friday, Jan. 6 8-11 p.m.	Kailua Bay Buddies
Saturday, Jan. 7 8-11 p.m.	Beach 5
Sunday, Jan. 8 7-10 p.m.	WTF! (What The Funk)
Monday, Jan. 9 7-10 p.m.	Acoustik Playground Ft. Cherie Yuen
Tuesday, Jan. 10 7-10 p.m.	Acoustik Playground Ft. Stacie Kuulei
Wednesday, Jan. 11 7-10 p.m.	Juke Joint
Thursday, Jan. 12 7-10 p.m.	Kush
Friday, Jan. 13 8-11 p.m.	Acoustik Playground Ft. Stacie Kuulei
Saturday, Jan. 14 8-11 p.m.	Next Level
Sunday, Jan. 15 7-10 p.m.	Juke Joint
Monday, Jan. 16 7-10 p.m.	Acoustik Playground Ft. Cherie Yuen
Tuesday, Jan. 17 7-10 p.m.	Acoustik Playground Ft. Stacie Kuulei
Wednesday, Jan. 18 7-10 p.m.	Juke Joint
Thursday, Jan. 19 7-10 p.m.	Keith Batlin Guidance Band
Friday, Jan. 20 8-11 p.m.	Kailua Bay Buddies
Saturday, Jan. 21 8-11 p.m.	Cutting Edge
Sunday, Jan. 22 7-10 p.m.	WTF! (What The Funk)
Monday, Jan. 23 7-10 p.m.	Acoustik Playground Ft. Cherie Yuen
Tuesday, Jan. 24 7-10 p.m.	Acoustik Playground Ft. Stacie Kuulei
Wednesday, Jan. 25 7-10 p.m.	Juke Joint
Thursday, Jan. 26 7-10 p.m.	Funkaholics with Ginai
Friday, Jan. 27 8-11 p.m.	Acoustik Playground Ft. Stacie Kuulei
Saturday, Jan. 28 8-11 p.m.	Hawaiian Soul
Sunday, Jan. 29 7-10 p.m.	Juke Joint
Monday, Jan. 30 7-10 p.m.	Acoustik Playground Ft. Cherie Yuen
Tuesday, Jan. 31 7-10 p.m.	Acoustik Playground Ft. Stacie Kuulei

TROPICS BAR & GRILL ENTERTAINMENT SCHEDULE: JANUARY 2023

Hilton Hawaiian Village Waikiki Beach Resort is proud to present the following top-notch, live music at the resort's Tropics Bar & Grill throughout the month of January:

Tuesday, Jan. 3 7-10 p.m.	Kaiona Duo
Wednesday, Jan. 4 7-10 p.m.	Bryan & Halehaku
Thursday, Jan. 5 7-10 p.m.	Koa & Yas
Friday, Jan. 6 8-11 p.m.	Kumuhau
Saturday, Jan. 7 8-11 p.m.	Ben Kama Duo
Tuesday, Jan. 10 7-10 p.m.	Christian Yrizarry Duo
Wednesday, Jan. 11 7-10 p.m.	Bryan & Halehaku
Thursday, Jan. 12 7-10 p.m.	Scott Magz & Preston Kauwe
Friday, Jan. 13 8-11 p.m.	Koa & Yas
Saturday, Jan. 14 8-11 p.m.	Chapter II
Tuesday, Jan. 17 7-10 p.m.	Scott Magz & Preston Kauwe
Wednesday, Jan. 18 7-10 p.m.	Bryan & Halehaku
Thursday, Jan. 19 7-10 p.m.	Jason Midro Duo
Friday, Jan. 20 8-11 p.m.	Kaiona Duo
Saturday, Jan. 21 8-11 p.m.	Ben Kama Duo
Tuesday, Jan. 24 7-10 p.m.	Christian Yrizarry Duo
Wednesday, Jan. 25 7-10 p.m.	Bryan & Halehaku
Thursday, Jan. 26 7-10 p.m.	Jason Midro Dui
Friday, Jan. 27 8-11 p.m.	Koa & Yas
Saturday, Jan. 28 8-11 p.m.	Chapter II
Tuesday, Jan. 31 7-10 p.m.	Kaiona Duo

INTERNATIONAL MARKET PLACE

January News from International Market Place!



Photo by Victor Goodpasture

Honolulu's hottest retail and dining experiences are right here in Waikīkī. [International Market Place](#) continues to introduce exciting brands to visitors and locals, complemented by events and entertainment seven nights a week. Following are the latest additions to its world-class selection of dining, shopping and entertainment.

[Odyssey VR](#), Level 1, Queen's Court

Experience the new age of entertainment at Odyssey VR. Bond with your friends and family in virtual and augmented reality, where you can play games, compete in races, or enjoy the thrill of rides. You can even enjoy music and have parties!

[Vibrations](#), Level 2, Banyan Court

This locally owned retail store brings a colorful, vibrant take on men's fashion. Gone are the days of poor-fitting options in those classic men's shades of gray, black, and khaki. Bring on the powerful patterns bursting with color, comfort, and quality. All types of bathing shorts, shorts, and shirts available.

[Rakuten Card Lounge](#), Level 1, Queen's Court

Are you a Rakuten card member? For Rakuten members, this lounge offers drinks, massage chairs, luggage storage, stroller rental, folding facilities, children's play space, etc. Also visit the Rakuten Travel Desk to reserve optional tours such as restaurant and spa reservations, airport transfers, and island tours.

Lunar New Year: Year of the Rabbit, January 29, 2023 – Welcome the Lunar New Year with high-energy Lion Dances (11 a.m. -1:30 p.m.) and traditional Chinese calligraphy (1:30 – 3:30 p.m.), Queen's Court, Level 1. Visit the [website](#) for special promotions on shopping and dining.

Local Hawaiian Music is Back in Waikiki

At [Moani Waikiki](#), you can enjoy great food, tasty drinks and live local music every night. Moani showcases some of the best live music on the island by featuring Hawaii's most talented artists. Check out their "Midweek Mele" (Wednesdays), Liquid Aloha Friday and Saturday Night Live events.

For more information on all stores and events, visit shopinternationalmarketplace.com



WAIKIKI
BEACH WALK. NEWS, NOTES & HAPPENINGS from Waikiki Beach Walk

Comingupcoming

Begin the New Year Celebrating Art & Culture at Waikiki Beach Walk

Waikiki Beach Walk, the vibrant shopping, dining and entertainment district at Lewers Street and Kalākaua Avenue, is hosting a variety of events rooted in the local community to engage Hawai'i residents and enhance the visitor experience. All are free and the public is invited to participate.

Mele Hali'a features the finest in Hawaiian musical entertainment by some of Hawai'i's most exceptional, award-winning artists on one special Sunday each month. January's Mele Hali'a will feature the Hawaiian Music Trio of cousins, **'Uhe'uhe** on **Sunday, January 15 from 5 to 6 p.m.**



The Lunar New Year will be celebrated at Waikiki Beach Walk on **Saturday, January 28, kicking off the Year of the Rabbit** with a traditional Lion Dance and Pole Jumping from **5:30 to 7:30 p.m.**

Waikiki Beach Walk welcomes three new vendors to their weekly Open Market. Wynnwood Farms, Prime Roast Café and Going Bananas have joined the lineup of local craft and food vendors available every **Monday from 4 to 8 p.m.** The market showcases a variety of goods from one-of-a-kind souvenirs and artwork to fresh produce and snacks grown and made right here in Hawai'i.

On December 14, **Park West Gallery Hawaii** hosted their second annual celebration of their Made in Hawaii artist competition. Hundreds of local artists submitted their work for a chance to be featured at Waikiki Beach Walk's Park West Gallery. After rounds of public and expert voting, the declared winner of 2022 is Crissia Vaugh of Kaneohe. Crissia's winning artwork can still be seen, along with the other top 10 finalists at Park West Gallery Hawaii at Waikiki Beach Walk. Visitors can browse original works from these incredible local artists **daily from 11 a.m. to 10 p.m.**

The gallery will also host an interactive artist experience on with popular contemporary artist [Csaba Markus](#). He will be making a public appearance at Park West Hawaii from **5 to 9 p.m. on Friday, January 27**, where he will meet fans, paint LIVE and show off his artwork, open to the public. The next day, **Saturday, January 28**, Park West Hawaii will be hosting a private cocktail party for Markus starting at **7 p.m.** to unveil a special exhibition of his paintings. There will be drinks, appetizers, and exclusive artwork pricing to those who attend. RSVPs for the event can be made by emailing waikikibeach@parkwestgallery.com.

WAIKIKI BEACH WALK • 226/227 Lewers St. Waikiki. Open Daily. www.waikikibeachwalk.com

Lucky Bags & Lunar New Year at Royal Hawaiian Center



Celebrate Fukubukuro & Shop for Lucky Bags

JANUARY 1 & 2, 2023

10:00-10:30am Taiko Performance
11:00am Shops Open

Ring in the new year at Royal Hawaiian Center’s annual Lucky Bag event where shoppers can score discounted merchandise at participating restaurants and retailers. The Japanese retail tradition offers discounts on “lucky bags” sold for half their typical retail value from participating stores and restaurants. Participants will include Dean & DeLuca, Tory Burch,, Jimmy Choo, Tim Ho Wan and more! Festivities begin on New Year’s Day with a Traditional Japanese Taiko Drum Performance in the Royal Grove. For a full list of participating stores and restaurants, visit [/www.royalhawaiiancenter.com/events/lucky-bag-2023](http://www.royalhawaiiancenter.com/events/lucky-bag-2023).



Mālama Hawai'i Makers Market

JANUARY 6 & 20, 2023 | 3PM - 8PM | BUILDING C, LEVEL 3

Shop a curated collection of local artists, makers, designers, collectors, and food vendors at the Mālama Hawai'i Makers Market. The pop-up marketplace will be held in the former Forever 21 space on the third floor of the Royal Hawaiian Center on Dec. 23, Jan. 6, and Jan. 20 from 3 – 8 p.m. The events welcome visitors to experience a local, island-inspired array of goods from more than 20 distinct vendors.

To learn more, visit www.royalhawaiiancenter.com.

Rooftop Stargazing in Paradise

JANUARY 18, 2023 | AT 6:30PM | BUILDING A, LEVEL 4

View Jupiter and its moons! On January 18 at 6:30 p.m., you and your 'ohana are invited for an up close and personal look at Jupiter and its moons in the Hawaiian night sky. Join us for our monthly **Rooftop Stargazing** event in Building A, Level 4. The event is open to the public and free to attend! First come, first serve! Masks are encouraged and social distancing will be observed. To learn more, visit www.royalhawaiiancenter.com/events/rooftop-stargazing.



Lunar New Year at Royal Hawaiian Center

JANUARY 22 - FEBRUARY 5, 2023

Celebrate the Year of the Rabbit over two weeks, with cultural activities, a special gift with purchase and lots of good luck! The festivities kick off with a lion dance performance every Sunday beginning on January 22, 2023. On Saturday, January 28, from 1pm to 4pm, take home a hand-written blessing associated with the Lunar New Year written in Chinese calligraphy at The Royal Grove and more! For a full list of Lunar New Year events and activities, visit www.royalhawaiiancenter.com/events.

LUCKY LAISEE GIFT WITH PURCHASE

Shoppers who visit the Center can present \$300 in combined receipts and receive their Lucky Laisee envelope from Helumoa Hale Guest Services. Each envelope contains a special prize ranging from an exclusive Royal Hawaiian Center prize ranging from tote bags to gift cards. Some exclusion apply.



Holiday Gift with Purchase

NOW THRU JANUARY 8, 2023

Shoppers who visit the Center to check everyone off their holiday shopping list can take advantage of an exclusive holiday gift with purchase. Guests who present \$800 in combined receipts will receive holiday-themed packing cubes locally designed by Hawaii-born artist JT Ojerio from Aloha de Mele.

For a full list of events, visit www.royalhawaiiancenter.com/events.

For updates on new stores and restaurants, follow us on social media (@royalhwncr) or visit our website at www.royalhawaiiancenter.com.

JANUARY



IANUALI 2023 | HELU 'UMIKUMAKOLU

Complimentary Cultural Programming

LĀ PULE SUNDAY	PŌ'AKAHI MONDAY	PŌ'ALUA TUESDAY	PŌ'AKOLU WEDNESDAY	PŌ'AHĀ THURSDAY	PŌ'ALIMA FRIDAY	PŌ'AONO SATURDAY
1 New Year's Day 10AM - 10:30AM G1 Taiko Performance	2	3 11AM - 12PM G1 Hula Lesson 5:30 PM - 6:30PM G1 Kawika Trask Trio	4 11AM - 12PM A2 Lauhala Lesson 5:30 PM - 6:30PM G1 Pu'uhonua	5 12PM - 1PM G1 Keiki Hula Lesson 5:30PM - 6:30PM G1 Hawaiian Music & Hula Performance	6 12PM - 1PM A2 Lei Making Lesson 3PM - 8PM C3 Mālama Hawai'i Makers Market 5:30 PM - 6:30PM G1 Malu Productions	7 5:30 PM - 6:30PM G1 Hula Kahiko
8	9	10 11AM - 12PM G1 Hula Lesson 5:30 PM - 6:30PM G1 Kawika Trask Trio	11 11AM - 12PM A2 Lauhala Lesson 5:30 PM - 6:30PM G1 Pu'uhonua	12 12PM - 1PM G1 Keiki Hula Lesson 5:30PM - 6:30PM G1 Hawaiian Music & Hula Performance	13 12PM - 1PM A2 Lei Making Lesson 5:30 PM - 6:30PM G1 Malu Productions	14 5:30 PM - 6:30PM G1 Hula Kahiko
15	16	17 11AM - 12PM G1 Hula Lesson 5:30 PM - 6:30PM G1 Kawika Trask Trio	18 11AM - 12PM A2 Lauhala Lesson 5:30 PM - 6:30PM G1 Pu'uhonua	19 12PM - 1PM G1 Keiki Hula Lesson 5:30PM - 6:30PM G1 Hawaiian Music & Hula Performance	20 12PM - 1PM A2 Lei Making Lesson 3PM - 8PM C3 Mālama Hawai'i Makers Market 5:30 PM - 6:30PM G1 Malu Productions	21 5:30 PM - 6:30PM G1 Hula Kahiko
22 Lunar New Year 6PM - 7PM G1 Lion Dance	23	24 11AM - 12PM G1 Hula Lesson 5:30 PM - 6:30PM G1 Kawika Trask Trio	25 11AM - 12PM A2 Lauhala Lesson 5:30 PM - 6:30PM G1 Pu'uhonua	26 12PM - 1PM G1 Keiki Hula Lesson 5:30PM - 6:30PM G1 Hawaiian Music & Hula Performance	27 12PM - 1PM A2 Lei Making Lesson 4PM-5PM G1 Gogo Drum 5:30 PM - 6:30PM G1 Malu Productions	28 1PM-4PM G1 Chinese Calligraphy 4:30PM-5:30PM G1 Pheonix Dance Group
29 6PM - 7PM G1 Lion Dance	30	31 11AM - 12PM G1 Hula Lesson 5:30 PM - 6:30PM G1 Kawika Trask Trio	[Hatched pattern]	[Hatched pattern]	LOCAL INFORMATION A2: Building A, 2nd Floor C3: Building C, 3rd Floor G1: The Grove Stage HH: Helumoa Hale For more information, call Helumoa Hale Guest Services. (808 922-2299)	

All programming is subject to change or cancellation. Contact Helumoa Hale Guest Services at 808.922.2299 or text us at 808.425.9088 for the latest information. Standard parking rates apply.



WAIKĪKĪ IMPROVEMENT ASSOCIATION

Wikiwiki Wire is published on the first Monday of each month. If you would like to share your news with other members, please send your info to: editor@waikikiimprovement.com.

Submission Deadline

Waikīkī-related news and information submitted by members (or their PR agencies) for the Wikiwiki Wire newsletter should be received no later than **5 PM MONDAY, ONE WEEK PRIOR** to the newsletter's publication and distribution on the first Monday of each month.

News & Stories: Please submit any Waikīkī-related stories/articles as a Word doc and include photos to accompany stories/ articles. For best results, please upload photos as a separate JPEG attachment - maximum 2 MB each image.

Flyers/PDFs: Waikīkī-related flyers are welcome but must look like advertising flyers and not press releases. Please format flyers to an 8.5" x 11" size and submit them in a PDF format.

Press Releases: Please submit Waikīkī-related press releases as a Word doc. Press Releases that do not fit within one page of the Wikiwiki Wire newsletter will be returned for editing.

Photos: For best results, please upload photos as a separate JPEG attachment - maximum 2 MB each image.



WAIKĪKĪ IMPROVEMENT ASSOCIATION

We are a cross-section of business, government and the community; our members care about the future of this special place - Waikīkī.

For more than 40 years, the Waikiki Improvement Association has remained true to its objective: to improve, enrich and beautify Waikīkī for the benefit of residents and visitors alike and to promote conditions conducive to the economic and cultural good and for the betterment of the entire community.

HAWAIIAN DIACRITICAL MARKS

Waikīkī Improvement Association recognizes the use of diacritical marks (i.e., glottal stop (ʻ), macron (ā) in place names of Hawaiʻi, such as Waikīkī and Kalākaua Avenue and will include them whenever possible. We also respect the individual use (or not) of these markings for names of organizations and businesses.

There will also be times when we may not have a chance to add or change the markings in all of the articles submitted and when that happens, e kala mai.