



WAIKĪKĪ IMPROVEMENT ASSOCIATION

# *Wikiwiki Wire*

*E-newsletter keeping you up-to-date on Waikīkī news, features, trends and more!*



# Contents

3

THE WTMA'S ROYAL  
HAWAIIAN AVENUE  
PROJECT

5

W.O.W. WAIKĪKĪ BEACH  
CLEAN UP - APRIL 20, 2024

6

THE KŪHIŌ BEACH HULA  
SHOW - *SUSPENDED*

7

STREET ACTIVITY IN & NEAR  
WAIKĪKĪ

## MORE WAIKĪKĪ NEWS, EVENTS & FOOD

DUKE'S LANE - ISLAND GOURMET COFFEE

BASALT AT DUKE'S LANE MARKET &  
EATERY - HAPPY HOUR AND LIVE MUSIC

NA LEO PILIMEHANA AT HOUSE WITHOUT  
A KEY - HALEKULANI

HALEPUNA - RELAXING RETREAT

FOOD GURUS

HAWAII CONVENTION CENTER  
WELCOMES HONOLULU FESTIVAL AND  
KAWAII KON

WHAT'S NEW IN MARCH AT  
INTERNATIONAL MARKET PLACE

EXPERIENCE AN EGG-STRA SPECIAL  
EASTER CELEBRATION AT ROYAL  
HAWAIIAN CENTER

SHERATON PRINCESS KAIULANI'S  
AINAHAU TOWER RENOVATION NEARS  
COMPLETION

ASIAN STREET FOODS MAKE A SPLASH AT  
SHERATON PRINCESS KAIULANI'S NEXT  
GLOBAL DINING EXPERIENCE

WAIKIKI BEACH WALK IS THE BEST PLACE  
TO EXPERIENCE HONOLULU FESTIVAL

PACRIM MARKETING GROUP INC.  
HIGHLIGHTS RESTAURANT SUNTORY'S  
NEW SURF & TURF KAMA'AINA SPECIALS

HAPPY HOUR AT WAIKIKI SHOPPING  
PLAZA

ARTIFACT TECH INC. - HAWAII'S OWN  
DIGITAL SIGNAGE DISPLAY SPECIALIST  
AND PREMIER METALLIC PRINT ARTWORK  
PRODUCER

# The WTMA's Royal Hawaiian Avenue Project



## The WTMA Is Solving Curb Abuse Problems

The Waikīkī Transportation Management Association (WTMA) was born in response to a growing problem: curb space abuse. Curb space is usually not thought about by drivers until it's needed. In most areas this is not a big problem. In Waikīkī, it is. Especially on Royal Hawaiian Avenue in the middle of the day.

## The WTMA Installs Sensors

Royal Hawaiian Avenue is a prime candidate for a pilot project since two of the commercial passenger operators account for about 60% of the vehicle arrivals using 22 vehicles. This is a reasonable number of vehicles to equip with transmitters or "tags" (in Rick's left hand) used as part of the loading zone management demonstration. Sensors (in Rick's right hand) along the roadway will detect a vehicle and whether it has the proper permits.

Permitted commercial vehicles participating in the demonstration program will be assigned a date and time for their arrival. WTMA will have personnel on site to assist drivers interested in being assigned a reservation. The reservation must be made at least 24 hours before the scheduled vehicle's arrival.



Rick Egged holding a tag and a sensor.



The WTMA worked with the City and DFS Galleria to install new regulatory signs along Royal Hawaiian Avenue in 2016. This enlarged the passenger loading zone from 44 to 365-feet. The changes worked well until recently.

The 365-foot long passenger loading zone tested the ability of the enlarged loading zone to serve all current commercial passenger vehicles willing to comply with the three-minute limit. Honolulu Police Department Special Duty enforcement was used to advise vehicle drivers of applicable regulations. HPD Special Duty is allowed to issue citations for those who do not comply.

Those vehicles abusing the 3-minute time limit negatively impact the ability of commercial passenger vehicle operators from reliably serving their guests. WTMA will erect new signs, install more sensors, and establish operating procedures to address this problem. Vehicles will need to have proper permits and reservations to use the Royal Hawaiian Avenue 'ewa curb.



**Waikīkī Transportation Management Association**  
2250 Kalākaua Avenue, Suite 315, Honolulu, Hawai'i 96813  
tmawaikiki@gmail.com

# W.O.W.

## WAIKĪKĪ BEACH CLEAN UP



IN HONOR OF EARTH DAY  
MAKE A DIFFERENCE

**APRIL 20, 2024 SAT. ~ 7:00 AM**  
**MEET AT DUKE'S STATUE**

### MAHALO TO OUR SPONSORS

Hyatt Regency Waikiki

ABC Stores

Hilton Hawaiian Village

Enoa Corporation

Polynesian Adventure Tours

Royal Star Hawai'i

Bank of Hawai'i

HPD D6

Halekūlani

Hawaiian Building Maintenance

Outrigger Hospitality Group

Highgate Hotels

Sheraton Princess Ka'iulani

Waikīkī Beach Marriott Resort

Kaimana Beach Hotel

Moana Surfrider Hotel

Central Pacific Bank

Queen Lili'uokalani Trust

Club Wyndham at Waikīkī Beach Walk

Prince Waikīkī

**Kūhio Beach Park**

Transportation will be provided to other  
clean up areas.

Continental Breakfast provided  
Pau by 9:00 AM

**NO VALIDATED PARKING** (you may find  
parking at the zoo or Kapiolani Park)

### WAIKĪKĪ IMPROVEMENT ASSOCIATION

2250 Kalākaua Ave  
Suite 315

Honolulu, Hawai'i 96815

Email:

[mail@waikikiimprovement.com](mailto:mail@waikikiimprovement.com)



**PLEASE RSVP: 808.923.1094**  
**JOANN@WAIKIKIIMPROVEMENT.COM**

# *Kūhiō Beach Hula Show*



**THE KUHIO BEACH HULA SHOW HAS BEEN SUSPENDED,  
PENDING FUNDING CONFIRMATION.**

Please check our website [www.waikikiimprovement.com](http://www.waikikiimprovement.com) for future updates.

# STREET ACTIVITY

IN AND NEAR WAIKĪKĪ (COURTESY OF THE CITY)

---

## HONOLULU RAINBOW EKIDEN RACE

Sunday, March 10, 2024

7:00 AM Lanes Close | 1:00 PM Lanes Reopen (Approximate)

HONOLULU RAINBOW EKIDEN RACE sponsored by JTB Hawaii/Honolulu Festival Organizing Committee. The event is expected to have 500 runners in relay teams. The event will start at end of Carriage Road Kapiolani Park, to Kalakaua Ave., kkhhd on Kalakaua Ave., to Diamond Hd Rd., to turnaround at 2nd lookout and return same route to Kapiolani Park. Makai half of Diamond Head from Dillingham Fountain to 2nd lookout will be closed from approx 8 am to 1 pm. Contact: Ben Williams 333-1151. , E-mail: [ben@hitricenter.com](mailto:ben@hitricenter.com) For more info, visit their website: <http://www.honolulufestival.com/>

## HONOLULU FESTIVALS PARADE

Sunday, March 10, 2024

3:30 PM Road Closes | 8:00 PM Road Reopens (Approximate)

HONOLULU FESTIVALS PARADE sponsored by JTB Hawaii/Honolulu Festival Organizing Committee. The event is expected to have 1,500 marchers, 10 floats, 20 vehicles & 3 bands. It will start at Kalakaua Ave. at Saratoga Rd., kkhhd on Kalakaua Ave., to Monsarrat Ave., to end at Waikiki Shell Parking Lot, Queen Kapiolani Park. Lanes will be closed starting 2 pm. Contact: Rick Taniguchi 347-3045, For more info, visit their website: <https://www.honolulufestival.com/>

# STREET ACTIVITY

IN AND NEAR WAIKĪKĪ (COURTESY OF THE CITY)

---

## ST. PATRICK'S DAY PARADE

Sunday, March 17, 2024

11:30 AM Road Closes | 1:00 PM Road Reopens (Approximate)

ST. PATRICK'S DAY PARADE sponsored by Friendly Sons of Saint Patrick of Hawaii. The event is expected to have 200 marchers, 40 vehicles, 4 bands. It will start at Saratoga Rd./Kalakaua Ave., to Kalakaua Ave., to Monsarrat Ave., to end at Queen Kapiolani Park. Lanes will be closed from 11:30 am. Contact: Matthew McConnell 285-0874 Email: mattmcconnell1@yahoo.com For more info, visit their website: <https://www.friendsofstpatrickhawaii.com/>

## NATIONAL VIETNAM VETERAN'S DAY PARADE

Friday, March 29, 2024

5:30 PM Road Closes | 8:00 PM Road Reopens (Approximate)

NATIONAL VIETNAM VETERAN'S DAY PARADE sponsored by Historic Programs/ Vietnam Veterans Day Parade Committee. The event is expected to have 1,500 marchers, 30 vehicles, 12 bands. It will start at Saratoga Rd./Kalakaua Ave., to Kalakaua Ave., to Monsarrat Ave., to end at Queen Kapiolani Park. Contact: MGySgt (Ret) Earl Hurrey 808-425-2908; Email: [earl@historicprograms.org](mailto:earl@historicprograms.org). For more info, visit their website: [www.historicprograms.org](http://www.historicprograms.org)



*Happy Hour* **2-6PM**

**10% OFF\***  
**All Smoothies**

**MARCH 2 - APRIL 5**



\*Additional add-ons not included. Cannot be combined with any other promotion(s).



**BASALT**  
 AT DUKES LANE MARKET & EATERY

HAPPY HOUR  
 3-5 pm daily  
 except Wednesday

WITH NEW DISHES FROM

**SPITFIRE**  
 ROTISSERIE & FLATBREAD



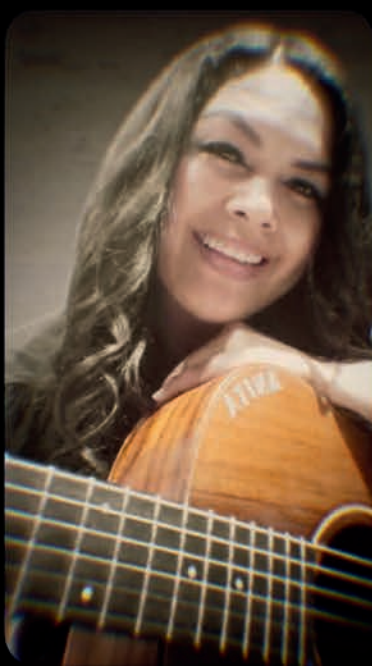
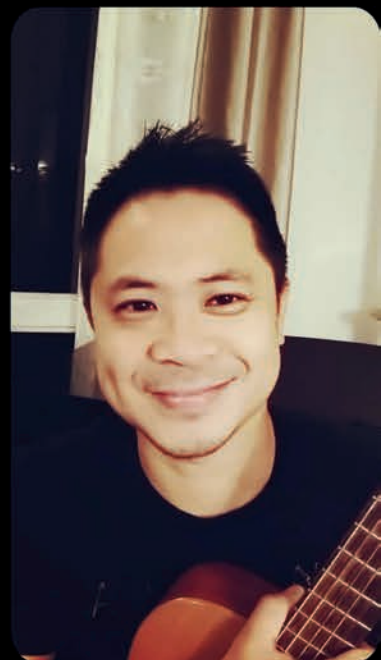
[BASALTWAIKIKI.COM](http://BASALTWAIKIKI.COM)



**BASALT**  
AT DUKES LANE MARKET & EATERY

**LIVE MUSIC**

daily 6-8 pm  
except Wednesdays

A central graphic featuring a dark circular background with white text. The background image shows a woman playing a guitar. The text is centered and reads: "BASALT AT DUKES LANE MARKET & EATERY", "LIVE MUSIC", and "daily 6-8 pm except Wednesdays".



**Halekulani**  
On the Beach at Waikiki



**nā mele 25**

## Nā Leo Pilimehana at House Without A Key March 12, 2024

In honor of the 25th anniversary of PBS Hawai'i's Nā Mele celebration, their Spring Pledge Drive will feature multi-award-winning Hawaiian music group Nā Leo Pilimehana at House Without A Key. "Nā Leo Pilimehana," who first performed on the local talent show Brown Bags to Stardom in 1984, is celebrating their 40th anniversary together. Limited seating will be offered on a first-come, first-served basis.

This live concert will be available on PBS Hawai'i's YouTube page starting at 6:30 pm.



### Menu du Soir 2024

La Mer Executive Chef Alexandre Trancher has reinvented his Menu du Soir that includes:

- Kampachi Tartare, Crispy Tuile, Sea Urchin Roe, Coconut Milk Sauce, Basil Oil
- Steamed Swordfish, Stewed Leeks, Saffron-Cream Sauce
- Roast Duck Filet, Glazed Turnip, Black Garlic, Cassis Red Sauce
- Choice of Cacao Pod, Guanaja Mousse, Kona Coffee Caramel, Kahlua Jelly OR a selection from the Cheese Cart

Please call 808-518-2019 for more information or to reserve your table.



### Reve de Tahiti

L'Aperitif, located within the award-winning La Mer Restaurant, is reminiscent of the Parisian cocktail culture of the 19th century.

Indulge in a selection of signature cocktails, including the Reve de Tahiti, our take on the old-fashioned cocktail, smoked before serving. This drink features Vanilla Butter fat washed High West rye, White Peach Tea Almond Syrup, Seville Orange Bitters, and Cherrywood Smoke.

*"In studying the food menu at La Mer, I was inspired by Chef Trancher's vanilla butter lobster dish. I took that concept, used a vegan butter infused with vanilla, and fat-washed a high-proof rye. I knew I wanted to make an old-fashioned but made that ingredient first, and let the rest reveal itself to me on flavor. The smoke cuts the perceived 'sweetness' on the nose from the vanilla and adds layers to the cocktail."* – Tuda Sarian



### Charles E Higa Ethereality

Charles Higa's dreamlike watercolors combine misty images often layered with surprisingly crisp geometrical forms creating his distinctive signature paintings.

His ceramics are similarly recognizable, with playful shapes and colors dancing on their surface.

Both are mediums that Higa found challenging, and he delighted in the partnership with the unpredictable nature of both materials.

"Ethereality" is on display in the Halekulani Art Gallery and is open daily from 9:00 am to 6:00 pm.



**Halepuna**  
 WAIKIKI  
 by Halekulani



## Relaxing Retreat

Unwind and recharge at our House of Welcoming Waters. Let the gentle lull of the ocean waves envelop you in a sense of calm. With our *Especially for You* package, customize your stay by choosing two of our special amenity offerings: Anytime check-in, Late check-out, Room upgrade, Resort Credit. Visit [www.halepuna.com/offers/especially-for-you](http://www.halepuna.com/offers/especially-for-you). Offering a relaxed sophistication, Halepuna provides the perfect sanctuary for those seeking respite...all with NO RESORT FEES.



### Upcoming festivities at Halekulani Bakery

#### Girl's Day – Feb 28 – March 3:

- Cherry Blossom Cookies
- Strawberry Mousse

#### St. Patrick's Day – March 13 – 17:

- Chocolate Bailey's Cheesecake
- Shamrock Cookies

#### Easter – March 27 – 31:

- Hot Cross Buns
- Chocolate Bunnies filled with Dragees

Open Wednesday – Sunday  
 6:30 am – 11:30 am

[www.halekulani.com/dining/halekulani-bakery](http://www.halekulani.com/dining/halekulani-bakery)



### UMI by Vikram Garg

Global restaurateur and chef innovator Vikram Garg offers a culinary celebration of the Ocean's Harvest.

For a limited time, Halepuna guests receive a 10% discount of the breakfast set menu and dinner selections when presenting their key card. Discount is not applicable on holidays, special menus, or beverage items.

Open daily for breakfast from 7:00 am, last seating at 10:30 am. Dinner is served Wednesday – Sunday 5:30 pm to 10:00 pm, last seating at 8:30 pm. Attire: Smart Casual.

[www.umibyvikramgarg.com](http://www.umibyvikramgarg.com)

808-744-4244

@umi\_vikramgarg



### Bishop Museum

On display from March 9 to September 8, 2024

#### ***Corned Beef & Kalo***

This exhibition brings together two iconic works of contemporary art to consider how artists make visible issues related to agriculture subsistence, environmental sustainability, and everyday life where food imports and structured land use intertwine.

For more information on this exhibit, please visit [bishopmuseum.org](http://bishopmuseum.org).

Halepuna guests have complimentary admission through the Halepuna Access program.



fg

**FOOD GURUS**  
**HAWAII**

**We Move Brands Off Shelves & Into Hearts**

Food Gurus is Hawaii's Food & Beverage Marketing Specialist.

One -Stop Comprehensive Creative, Digital, Marketing &  
Publicity Customized Solutions.



**foodgurususa.com**

Contact us for a free consultation

Doug Harris - [doug@digivortex.com](mailto:doug@digivortex.com) | (808) 946-4626



## Hawai'i Convention Center Welcomes Honolulu Festival and Kawaii Kon

The 28th-annual Honolulu Festival will bring performances, global cuisine, educational programs, a craft fair and exhibition, and more to the Hawai'i Convention Center from March 8-10, 2024. Performances will highlight various countries and regions such as Japan, Australia, Tahiti, the Philippines, Taiwan, South Korea and the United States.

This year the festival will feature the free "Save the Beach, Save the Ocean!" Honolulu Art Market to help protect beaches around the world. Participating local artists include Heather Brown and Nick Kuchar.

The Honolulu Festival is a premier Hawai'i cultural event that promotes mutual understanding, economic cooperation and ethnic harmony between the people of Hawai'i and the Pacific Rim region. Activities are free and are sponsored by the Honolulu Festival Foundation.

A detailed schedule of events can be found at [HonoluluFestival.com](https://HonoluluFestival.com).



**Kawaii Kon** will be held from March 29-31, 2024, at the Center. Kawaii Kon is an annual celebration of Japanese culture, anime, and pop culture. Events and activities include video games, tabletop games, costume contests, thousands of manga to read, a formal ball, Artist Alley and the Dealer's Room.

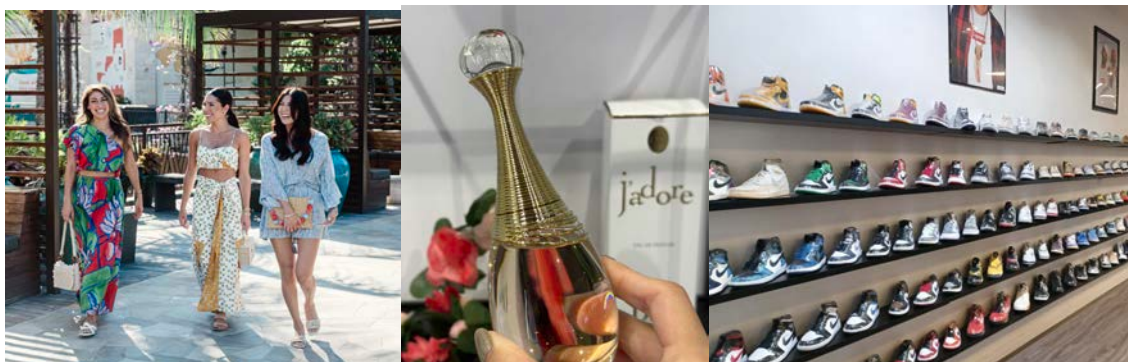
Children 10 years old and under get in free with a paid Kawaii Kon member. Registration and additional information are available at [KawaiiKon.com](https://KawaiiKon.com).



In addition, the Center is hosting the **2024 Pacific Operational Science & Technology (POST) Conference** from March 4-7, organized by the National Defense Industrial Association (NDIA) and the U.S. Indo-Pacific Command. The conference will examine the theme, "Posturing for Tomorrow – Partnered / Positioned / Prepared." This event serves as a platform for collaboration, innovation, and exploration of Department of Defense (DoD) opportunities for joint research, development, and experimentation.

# INTERNATIONAL MARKET PLACE

## What's New in March at International Market Place



There is always something new happening at International Market Place. Check out the latest updates from Waikiki's best open-air destination where shopping, dining and entertainment come together.

### NOW OPEN

**Rotation Hawaii** is the newest shop on the island providing customers with the latest sneaker heat and apparel to add to their "rotation". Find exclusive styles from Nike, Supreme, Yeezy and more. Open daily on Level 1, Mauka Court.

Visit the exclusive boutique, "**La Maison du Parfum**", on an olfactory journey through land of perfumes. Here guests can receive personal advice from the store's team members, who help guide them through a selection of divine scents to match any personality.

**Mochill Mochi Donut** in Mitsuwa Marketplace is known for delicious mochi doughnuts and mochi crepes. This California based business is open at International Market Place for the next two months (with the possibility to extend). All crepes are made to order and feature special Hawaii flavors like mango, acai, pineapple, macadamia chocolate banana and more. Open daily, 11 a.m. to 8 p.m.

**Sushi Ogame** has opened at Kuhio Avenue Food Hall, offering an exclusive 16 course omakase for \$125. Seatings are available Thursday through Saturday at 6:30 and 8:30 p.m.

### COMING SOON

**Shiatsu & Massage Center** will open in March on Level 1 in the Queen's Court. Specializing in exceptional shiatsu and massage therapy, each client is offered a wide array of massage styles and services to meet their needs.

**Urgent Care Hawaii** will open this March on Level 2 near Balenciaga.

### ENTERTAINMENT UPDATE

'**O Nā Lani Sunset Stories** captivates audiences at International Market Place three nights a week (Monday, Wednesday and Friday) honoring the center's rich history and sense of place through Hawaiian and Polynesian song and dance.

Free and open to the public, it begins at sunset with the ceremonial lighting of the Lamakū Torch Tower on Kalākaua Avenue and leads to the stage at Queen's Court. Beginning in March, the show will begin at 6:30 p.m. (changed from the previous 6 p.m. start time)

For more information on all stores, dining and events, visit <https://shopinternationalmarketplace.com>



## Experience an Egg-stra Special Easter Celebration at Royal Hawaiian Center



### Hop Over to Royal Hawaiian Center for a Special Meet-and-Greet with Aunty Lele and Uncle Lapaki

**MARCH 29-31, 2024 | 3PM-6PM**

Guests are invited to Royal Hawaiian Center to meet Aunty Lele and Uncle Lapaki from March 29-31, 2024, between 3pm and 6pm for a three-day Easter Bunny photo opportunity. Families can bring their 'ohana and indulge in a FREE photo session to create a unique memory. This egg-citing Easter celebration promises fun for all! Keep an eye on Royal Hawaiian Center's social media pages for a VIP access Giveaway.

To learn more, visit <https://www.royalhawaiiancenter.com/events/2024-free-easter-bunny-photos>.



## Rooftop Stargazing in Paradise

MARCH 17, 2024, FROM 6:45PM–8:45PM | BUILDING A, LEVEL 4

Embark on an engaging stargazing experience on March 17, 2024, from 6:45pm to 8:45pm, and explore the moon and stars in the Hawaiian night sky. This monthly event, hosted on Ka Lewa Lānai, is open to the public and free of charge. Spaces are limited and operate on a first-come, first-served basis. Don't miss this incredible opportunity to personally explore the beauty of the cosmos.

To learn more, visit [www.royalhawaiiancenter.com/events/rooftop-stargazing](http://www.royalhawaiiancenter.com/events/rooftop-stargazing).

## Spring Gift with Purchase

MARCH 10–APRIL 2, 2024

Embrace the arrival of Spring with an exciting Gift with Purchase offer at Royal Hawaiian Center! From March 10 to April 2, 2024, when you make purchases totaling \$500 or more, you will receive a complimentary set of travel packing cubes inspired by 'Olelo! With a wide selection of restaurants and retailers to choose from, shoppers can easily qualify and enjoy these exclusive travel essentials.

To learn more, visit <https://royalhawaiiancenter.com/events>



## Kama'āina & Military Parking

Royal Hawaiian Center offers an impressive parking program available for local residents and military members. This promotion allows guests to receive three hours of validated parking for free after making a minimum purchase of \$10 from any of the center's stores or restaurants. After the three hours, standard parking rates will apply. To qualify for this offer, guests must redeem their validations at the Helumoa Hale Guest Services desk between 11am and 8pm daily with same-day receipt(s) totaling \$10 or more and a valid Military or Hawai'i State I.D., or driver's license.

For a full list of events, visit [www.royalhawaiiancenter.com/events](http://www.royalhawaiiancenter.com/events).

For updates on new stores and restaurants, follow us on social media (@royalhwcntr) or visit our website at [www.royalhawaiiancenter.com](http://www.royalhawaiiancenter.com).

For a full list of events, visit [www.royalhawaiiancenter.com/events](http://www.royalhawaiiancenter.com/events).  
For updates on new stores and restaurants, follow us on social media (@royalhwcntr)  
or visit our website at [www.royalhawaiiancenter.com](http://www.royalhawaiiancenter.com).

# MARCH



MALAKI 2024 | HELU IWAKĀLUA-KŪMĀ-HIKU

LĀ PULE SUNDAY	PŌ'AKAHI MONDAY	PŌ'ALUA TUESDAY	PŌ'AKOLU WEDNESDAY	PŌ'AHĀ THURSDAY	PŌ'ALIMA FRIDAY	PŌ'AONO SATURDAY
					<b>1</b> 11AM-12PM   C2 Lei Making Lesson 5:30PM-6:30PM   G1 Malu Productions Performance	<b>2</b> 13:30PM-4:15PM   G1 Keiki Hula Performance 5:30PM-6:30PM   G1 Hula Kahiko Performance
<b>3</b>	<b>4</b> 11AM-12PM   G1 'Ukulele Lesson	<b>5</b> 11AM-12PM   G1 Hula Lesson 5:30PM-6:30PM   G1 Kawika Trask Trio Performance	<b>6</b> 11AM-12PM   C2 Lauhala Lesson 5:30PM-6:30PM   G1 Koliko Performance	<b>7</b> 11AM   G1 Keiki Hula Lesson 5:30PM-6:30PM   G1 Pu'uhonua Performance	<b>8</b> 11AM-12PM   C2 Lei Making Lesson 5:30 PM - 6:30PM   G1 Malu Productions Performance	<b>9</b> 3:30PM-4:15PM   G1 Keiki Hula Performance 5:30PM-6:30PM   G1 Hula Kahiko Performance
<b>10</b>	<b>11</b> 11AM-12PM   G1 'Ukulele Lesson	<b>12</b> 11AM-12PM   G1 Hula Lesson 5:30PM-6:30PM   G1 Kawika Trask Trio Performance	<b>13</b> 11AM-12PM   C2 Lauhala Lesson 5:30PM-6:30PM   G1 Koliko Performance	<b>14</b> 11AM   G1 Keiki Hula Lesson 5:30PM-6:30PM   G1 Pu'uhonua Performance	<b>15</b> 11AM-12PM   C2 Lei Making Lesson 5:30PM-6:30PM   G1 Malu Productions Performance	<b>16</b> 3:30PM-4:15PM   G1 Keiki Hula Performance 5:30PM-6:30PM   G1 Hula Kahiko Performance
<b>17</b> 6:45PM-8:45PM   A4 Rooftop Stargazing	<b>18</b> 11AM-12PM   G1 'Ukulele Lesson	<b>19</b> 11AM-12PM   G1 Hula Lesson 5:30PM-6:30PM   G1 Kawika Trask Trio Performance	<b>20</b> 11AM-12PM   C2 Lauhala Lesson 5:30PM-6:30PM   G1 Koliko Performance	<b>21</b> 11AM   G1 Keiki Hula Lesson 5:30PM-6:30PM   G1 Pu'uhonua Performance	<b>22</b> 11AM-12PM   C2 Lei Making Lesson 5:30PM-6:30PM   G1 Malu Productions Performance	<b>23</b> 3:30PM-4:15PM   G1 Keiki Hula Performance 5:30PM-6:30PM   G1 Hula Kahiko Performance
<b>24</b>	<b>25</b> 11AM-12PM   G1 'Ukulele Lesson	<b>26</b> 11AM-12PM   G1 Hula Lesson 5:30PM-6:30PM   G1 Kawika Trask Trio Performance	<b>27</b> 11AM-12PM   C2 Lauhala Lesson 5:30PM-6:30PM   G1 Koliko Performance	<b>28</b> 11AM   G1 Keiki Hula Lesson 5:30PM-6:30PM   G1 Pu'uhonua Performance	<b>29</b> 11AM-12PM   C2 Lei Making Lesson 3:00PM-6:00PM Easter Bunny Photos 5:30PM-6:30PM   G1 Malu Productions Performance	<b>30</b> 3:00PM-6:00PM Easter Bunny Photos 3:30PM-4:15PM   G1 Keiki Hula Performance 5:30PM-6:30PM   G1 Hula Kahiko Performance
<b>31</b> 3:00PM-6:00PM Easter Bunny Photos				<b>LOCAL INFORMATION</b> A3: Building A, 3rd Floor    G1: The Grove Stage A4: Building A, 4th Floor    HH: Helumoa Hale C2: Building C, 2nd Floor C3: Building C, 3rd Floor For more information, call Helumoa Hale Guest Services. (808 922-2299)		



## SHERATON PRINCESS KAIULANI'S AINAHAU TOWER RENOVATION NEARS COMPLETION

Renovations feature modern tropical redesigns of its guestrooms

**SHERATON**  
Princess Kaiulani

HONOLULU – February 26, 2024 – The Sheraton Princess Kaiulani, which sits on the former site of the Ainahau Estate and was once home to Hawaii's beloved Princess Victoria Kaiulani, is nearing completion of a renovation of its 664-room Ainahau Tower. The renovation includes modern tropical redesigns of its guestrooms while emphasizing and respecting the history and story of Waikiki.

With many of its rooms already treating guests to the remarkable Pacific Ocean, Leahi (aka Diamond Head State Monument) and Waikiki skyline and cityscape views, the Ainahau Tower has long been home to the Sheraton Princess Kaiulani hotel's most sought-after accommodations. The current tower renovation project is scheduled for full completion in June 2024.



Since the completion and release of Ainahau Tower's first group of redesigned guestrooms in January, Sheraton Princess Kaiulani guests have delighted in a visually and aesthetically pleasing makeover, bringing contemporary, tropical, botanical surroundings and a uniquely fresh and colorful spirit to their stay. Each guestroom integrates a relaxing and beachy palette of interior colors – which include papaya, mocha and sky-blue hues – and was designed by The Vanguard Theory. This Hawaii-based, wahine-led design firm also took the lead in incorporating

all-new platform beds, renewed ambient lighting, and updated wall coverings, drapes and flooring. Local touch permeates throughout: native Hawaiian designer NOHO Home provides the upholstery, and local artist Jenn Ellenburg's photography is featured in each room.

Drawing inspiration from Waikiki's history, Princess Kaiulani's fashion, embracing natural landscapes, and highlighting the historical grounds and proximity to the beach, Vanguard Theory was committed to blending these elements to enhance and elevate the original design. Keen-eyed observers will notice touches paying homage to meticulously researched historical images - everything from the historic property's original plantings to the pinstriping of Princess Kaiulani's Mu'umu'u.

"We are delighted to collaborate with the wonderful team at Princess Kaiulani to make this renovation a success," said Michelle Jaime, founding principal/creative director at The Vanguard Theory. "Our team was committed to showcasing Princess Kaiulani's legacy by creating a sense of place for guests, establishing a comfortable setting to relax and connect to a place they are visiting in an impactful way."

As more renovated Ainahau Tower guestrooms have opened for guest stays in subsequent months, the transformation project is concurrently nearing completion on upgraded lighting and signage in the tower's room corridors. The property plans to begin renovation work on the Sheraton Princess Kaiulani Ainahau Tower lobby over the summer.

"Now that new and longtime guests are already letting us know how much they love the fresh look and feel of the Ainahau Tower's new guestrooms, we're really excited about completing and unveiling the rest of our current renovations and hearing what they think of the new ambiance and elements still to be revealed at our beloved Princess Kaiulani property," said Thomas Foti, bplex general manager, Moana Surfrider, A Westin Resort & Spa and Sheraton Princess Kaiulani.

For more information about Sheraton Princess Kaiulani or to book a room, please visit [www.princesskaiulani.com](http://www.princesskaiulani.com).



# SHERATON

Princess Kaiulani

## ASIAN STREET FOODS MAKE A SPLASH AT SHERATON PRINCESS KAIULANI'S NEXT GLOBAL DINING EXPERIENCE

HONOLULU – The tantalizing flavors of Asian Street Food reign supreme at Splash Bar's next collaboration dinner on Saturday, March 16.

Award-winning chefs Blake Kajiwara and Vicky Nguyen's creative menu covers five countries with a distinctive dish from each nation: Thailand, Japan, Korea, Vietnam and the Philippines.



### Thailand

Stuffed Chicken Wings (Peek Gai Yud Sai)

Flash fried boneless chicken wings stuffed with pork, shrimp, carrot mung bean noodle, garlic, shallots and coriander

Paired with: Sabai Sabai (Brugal Anejo rum, Thai basil, lime juice, simple syrup, egg white)

### Japan

Okonomiyaki (Hashimaki Style)

Savory pancake with finely chopped cabbage, lobster, Hokkaido scallops, bacon, mushrooms, green onions, Katsuobushi, okonomiyaki sauce, Kewpie mayonnaise, beni shoga, quail egg, yakisoba noodles

Paired with: Kyushu Highball (Hakata Whiskey 12-year sherry cask, Choya yuzu wash, effervescence)

### Korea

Bulgogi & Shrimp Street Toast (Gilgeori)

Bulgogi, shrimp cake, cucumbers, carrots, American Cheese, egg, Hawaiian sweetbread, gochujang mayo

Paired with: Soju, Strawberry Milkis

### Vietnam

North Vietnam Vermicelli Noodle with Grilled Pork Meatballs (Bun Cha Hanoi)

Grilled seasoned pork patties and caramelized pork belly slices in broth with lettuce, cucumber and vermicelli & sweet dipping sauce

Paired with: Domaine le Peu de la Moriette Vouvray & Les Cassagnes Cotes-du-Rhone Villages

### Philippines

Halo-Halo

Shaved ice, sweet potatoes, jack fruit, sweet beans, coconut, nata de coco (coconut gel), tapioca pearls, leche flan, Ube ice cream

Paired with: Salamat Spritz (Kohana Kea Agricole rum, Soho, calamansi-hibiscus reduction, lychee jelly, club soda)

Asian Street Food's rise in popularity is a result of travelers seeking authentic experiences and a desire to connect with the host culture through regional cuisine. Over the past two years, Chefs Kajiwara and Nguyen have collaborated on several special events that bring innovative, delectable dishes to Splash Bar, the award-winning eatery at the Sheraton Princess Kaiulani. Their efforts have started paying off as Splash Bar received the Gold Award for "Best Bar Food" in HONOLULU Magazine's prestigious Hale 'Āina restaurant awards in 2023.

The Asian Street Food event is \$110 per person (including gratuity); however, tax and a booking fee cost an additional \$11 per ticket. Four-hour validated parking is available in the Sheraton Princess Kaiulani parking garage. To reserve a seat, log onto Splash Bar Waikiki's website at [www.splashbarwaikiki.com](http://www.splashbarwaikiki.com).

Additionally, Sheraton Princess Kaiulani is in the midst of an upgrade project in its Ainahau Tower, where many of the 664 rooms boast ocean or skyline views. The makeover will bring a tropical, elegant feel to each guest room with all new platform beds, updated wall coverings, drapes and flooring. Room reservations at the Sheraton Princess Kaiulani can be made by clicking on [this link](#).

## Waikiki Beach Walk is the Best Place to Experience Honolulu Festival

Experience Hawaii's cultural vibrancy at [Waikiki Beach Walk](#) during the **2024 Honolulu Festival**. Taking place the weekend of **March 9-10**, this highly anticipated event is a beloved highlight on Hawaii's calendar, renowned for its diverse array of traditional, contemporary, and indigenous cultural showcases.

The festival brings together talents from Hawai'i, Japan, Korea, China, Taiwan, Australia, the Philippines, the mainland U.S., Europe, and South America, offering an array of activities, performances, and events, creating a memorable experience for all who attend.



*Photo credits to Honolulu Festival.*

Performances at the Waikiki Beach Walk Plaza Stage will happen on **Saturday, March 9** from **10 a.m. to 6 p.m.** and **Sunday, March 10** from **10 a.m. to 3 p.m.** The festival culminates on Sunday evening with a Grand Parade from **4 – 8 p.m.** with a firework show to follow. What better way to enjoy the event than with dinner in between at any of Waikiki Beach Walk's [restaurants and eateries](#)? Visit the official Honolulu Festival Website to view the full [event schedule](#).

Amidst this celebration, Waikiki Beach Walk stands out as the best location to immerse oneself in the festival's atmosphere, offering an experience that captures the heart and soul of Hawaii.

### **OTHER NEWS**

Mele Hali'a features the finest in Hawaiian musical entertainment by some of Hawai'i's most exceptional, award-winning artists on one special Sunday each month. All performances are open and free of charge. Waikiki Beach Walk has introduced a series this year called "Ke Kulāiwi" that concentrates on the "*native homeland*" of our Hawaiian people in specific Hawaiian organizations, hula schools, and alike.

Join us on **Sunday, March 17** from **5 to 6 p.m.** for **Kumu Hula Ipolani Silva & Hālau Hula Ke'ala O Ka 'Iliahi**.

**Parking Update** – Complimentary parking for three hours will be provided when entering after 10 a.m. and exiting before 3 p.m. with proof of a minimum \$10 purchase (receipts necessary) from any of the retailers or restaurants at WBW.

## RESTAURANT SUNTORY OFFERS NEW SURF & TURF KAMA'AINA SPECIALS



[Restaurant Suntory](#) has had a home in Hawaii for 43 years and is showing local customers their appreciation with two [kama'aina specials](#). While the last two years have brought many changes, from interior redesign to menu upgrades, the staff's dedication to exceptional authentic Japanese cuisine with omotenashi (hospitality) and aloha remains the same.

These specials offer a great way to try [Teppan Room](#) grill offerings. With both a lunch and dinner option, the kama'aina specials are perfect for any occasion, from a business lunch to date night. Enjoy the finest ingredients alongside Suntory spirits and other beverages.

A current Hawaii ID is required to take advantage of these deals, which are scheduled to run through April 15, 2024. Reservations are recommended and can be made through [RESY](#) or over the phone at **(808) 922-5511**. The restaurant is located in **Bldg. B on level 3 of Royal Hawaiian Center**, with [validated parking](#) available.

### WASHUGYU & SUSHI ROLL LUNCH SET (\$26)

A savory steak paired with a fresh sushi roll allows diners to indulge in two sides of the Suntory menu. 4oz of Washugyu tri-tip steak are served over a bed of bean sprouts on a sizzling plate and accompanied by the roll of the day. Comes with green salad and miso soup for a well-balanced lunch.

### TEPPAN DINNER COURSE MEAL (\$85)

The popular teppanyaki dinner special returns. Hawaii residents can experience a curated multi-course feast featuring the finest ingredients from land and sea. The satisfying spread includes a green salad, the chowder of the day, one Hokkaido scallop, one panko fried shrimp, one lobster tail, a 5oz US filet steak, grilled vegetables, garlic fried rice, miso soup, and dessert.



### SEASONAL SPECIALS

Diners can also complement their meals with à la carte items like [sushi](#) from the restaurant's renowned sushi counter, [Tokiwa](#), or seasonal offerings that are updated every few months. Along with whisky flights of rare Suntory whiskies and non-alcoholic beer, travelers and locals alike can enjoy a rotation of specials, such as Grilled Tilefish with Vichyssoise Mac Nut Sauce (\$24) and Kiawe Smoked Salmon (\$24).





# HAPPY HOUR

*at the Waikiki Shopping Plaza*

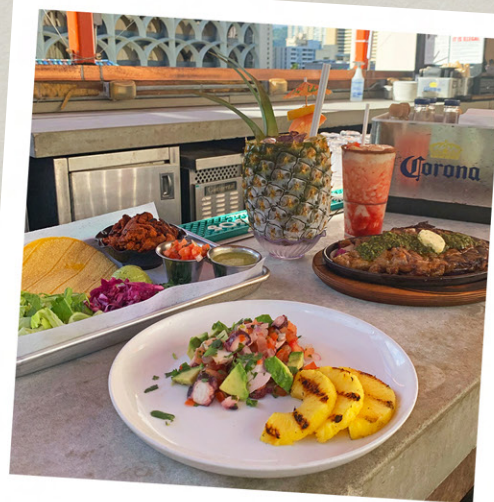
After a day of shopping and exploring Waikīkī, there's nothing better than unwinding with refreshing drinks and delicious bites.

If you enjoy a fun ambiance and beautiful views, Búho Cocina y Cantina is the place to be. This Mexican rooftop bar offers a wide selection of tequila and cocktails, as well as tacos, empanadas, and more. Enjoy their all day happy hour on Thursdays!

Looking for a unique, sophisticated experience? Shanghai Bar has a specialty menu of Asian inspired cocktails, Japanese highballs, appetizers, and more. Check out their \$5 happy hour menu, available daily.



*Shanghai Bar*



*Búho Cocina y Cantina*

## NEW PARKING RATES

\$3 per half hour (6:30am-midnight)

\$15 Daytime Special: Up to 10 hours for \$15  
Must enter the lot between 6:30am - 5pm

Daily Maximum: \$50  
Lost Ticket: \$50



## ARTIFACT TECH INC.

*Hawaii's own digital signage display specialist and premier metallic print artwork producer.*

### Digital Signage Display

Our products use the highest brightness and clarity LED screens, custom manufactured in our local factory in Hawaii to meet your need.

- Stationary or mobile digital display solution available of any size and functionality.
- Supporting touch screen interaction, automatic network-controlled content display, free WiFi access, and glasses-free 3D capabilities.
- Supported by experienced IT engineers with swift delivery for our customers.



### Metallic Print

- Gallery quality metallic print locally manufactured in Hawaii.
- Mega size production capability up to 8ft x 4ft, which is the largest dimension for single piece metal print in the world.
- Artifact's metal prints are certified for 'Made In Hawaii with Aloha'





# WAIKĪKĪ IMPROVEMENT ASSOCIATION

---

Wikiwiki Wire is published on the first Monday of each month. If you would like to share your news with other members, please send your info to: [editor@waikikiimprovement.com](mailto:editor@waikikiimprovement.com).

## **Submission Deadline**

Waikīkī-related news and information submitted by members (or their PR agencies) for the Wikiwiki Wire newsletter should be received no later than **5 PM MONDAY, ONE WEEK PRIOR** to the newsletter's publication and distribution on the first Monday of each month.

**News & Stories:** Please submit any Waikīkī-related stories/articles as a Word doc and include photos to accompany stories/ articles. For best results, please upload photos as a separate JPEG attachment - maximum 2 MB each image.

**Flyers/PDFs:** Waikīkī-related flyers are welcome but must look like advertising flyers and not press releases. Please format flyers to an 8.5" x 11" size and submit them in a PDF format.

**Press Releases:** Please submit Waikīkī-related press releases as a Word doc. Press Releases that do not fit within one page of the Wikiwiki Wire newsletter will be returned for editing.

**Photos:** For best results, please upload photos as a separate JPEG attachment - maximum 2 MB each image.



# WAIKĪKĪ IMPROVEMENT ASSOCIATION

We are a cross-section of business, government and the community; our members care about the future of this special place - Waikīkī.

For more than 40 years, the Waikiki Improvement Association has remained true to its objective: to improve, enrich and beautify Waikīkī for the benefit of residents and visitors alike and to promote conditions conducive to the economic and cultural good and for the betterment of the entire community.

## HAWAIIAN DIACRITICAL MARKS

Waikīkī Improvement Association recognizes the use of diacritical marks (i.e., glottal stop (ʻ), macron (ā) in place names of Hawaiʻi, such as Waikīkī and Kalākaua Avenue and will include them whenever possible. We also respect the individual use (or not) of these markings for names of organizations and businesses.

There will also be times when we may not have a chance to add or change the markings in all of the articles submitted and when that happens, e kala mai.