



WAIKĪKĪ IMPROVEMENT ASSOCIATION

Wikiwiki Wire

E-newsletter keeping you up-to-date on Waikiki news, features, trends and more!



HAPPY NEW YEAR
HAU'OLI MAKAHIKI HOU

Contents

- 3 SUPPLEMENTAL PERMITS REQUIRED FOR WAIKĪKĪ LOADING ZONES AND BUS STOP PARKING
- 5 THE ROYAL HAWAIIAN, A LUXURY COLLECTION RESORT CELEBRATES MAKAHIKI
- 6 HYATT REGENCY WAIKĪKĪ SPREADS HOLIDAY CHEER TO MAKE-A-WISH HAWAII®
- 7 TANAKA OF TOKYO SERVES THE PLAYERS AND FAMILIES OF JAPAN'S YOMIURI GIANTS
- 8 WAIKĪKĪ BEACH HULA SHOW AT THE KUHIO BEACH HULA MOUND
- 9 STREET ACTIVITY AROUND WAIKIKI

WAIKIKI HAPPENINGS

CHINESE LION DANCE AT LUXURY ROW

DESSERT AND LIVE MUSIC AT BASALT

DINE AT BILLS HAWAII

HAWAII CONVENTION CENTER UPCOMING JANUARY EVENTS

NĀ HO'ŌLA SPA'S 2020 SPRING PROMOTION

IL LUPINO TRATTORIA & WINE BAR BREAKFAST, LUNCH, DINNER, WKND BRUNCH & HAPPY HOURS

ISLAND VINTAGE WINE BAR LUNCH & DINNER:

SMALL PLATES, PLATES, & CHEESE PLATES

WAIKĪKĪ BEACH WALK: DISCOVER MORE ON THE SECOND FLOOR, DINING, ENTERTAINMENT & ACTIVITIES

ROYAL HAWAIIAN CENTER CELEBRATES MILESTONE 40TH ANNIVERSARY

LUNAR NEW YEAR LIGHTS UP ROYAL HAWAIIAN CENTER

HAWAIIAN CULTURE ON DISPLAY AT ROYAL HAWAIIAN CENTER

TANAKA OF TOKYO JAPANESE STEAK & SEAFOOD

WOLFGANG STEAKHOUSE: ALL-DAY HAPPY HOUR IN THE BAR; MAKE YOUR VALENTINE'S DAY RESERVATION TODAY

SKY WAIKIKI RESTAURANT: KAMA'AINA DISCOUNTS, CELEBRATE VALENTINE'S DAY AT SKY WAIKIKI

THE WAIKIKI SHOPPING PLAZA: NEW PARKING RATE - \$7 WEEKDAY FLAT RATE

WHAT'S HAPPENING AT HYATT REGENCY WAIKĪKĪ BEACH RESORT & SPA AND PUALEILANI ATRIUM SHOPS

RING IN CHINESE NEW YEAR WITH INTERNATIONAL MARKETPLACE

PLAYCATION STAYCATION AT HILTON HAWAIIAN VILLAGE

Permits Required

SUPPLEMENTAL PERMITS REQUIRED FOR WAIKĪKĪ LOADING ZONES & BUS STOP PARKING



BEGINNING JANUARY 1, 2020, the annual permit fee for freight curb loading zones and bus stops on O'ahu will be \$60 plus \$10 for the decal, a total of \$70 per vehicle.

Vehicles that use freight curb loading zones or bus stops in Waikīkī will be required to have a supplemental Transportation Management Special Improvement District (TMSID) permit displayed on the vehicle. This supplemental permit fee is \$120 plus \$10 for the decal, a total of \$130 per vehicle.

Vehicles operating in a TMSID must have both a valid O'ahu loading zone permit and the new TMSID supplemental permit.

HOW DO YOU GET YOUR TMSID SUPPLEMENTAL PERMITS FOR WAIKĪKĪ?

Applicants should visit any Satellite City Hall to apply for the TMSID supplemental permit. The applicant must have a current O'ahu Loading Zone or Bus Stop Permit.

The requirements for TMSID permits are the same as the loading zone and bus stop permits.

APPLICANTS MUST BRING:

- Copy of current certificate of registration
- Current vehicle inspection certificate
- Completed application form: CS-L (SS) 13 (the form can be picked up at any Satellite City Hall or may be requested by calling 808-768-9700)

TMSID applications will not be processed over the counter but will be transmitted to the Special Services Section at Kapalama Hale for processing on a first-in, first-out basis. TMSID decals will be mailed to the applicant within 7-10 business days.

The Satellite City Halls accept cash or check. The supplemental permit expires on December 31 of the year in which it is issued. Application forms with required documentation may also be mailed to:

Department of Customer Services,
Division of Motor Vehicles, Licensing and Permits
P.O. Box 30310
Honolulu, HI 96820-0310

For additional information on the Loading Zone and Bus Stop Parking Supplemental Permits, call City and County of Honolulu Customer Service at 808-768-3391 or visit: <http://www.honolulu.gov/cms-csd-menu/site-csd-sitearticles/37146-loading-zone-and-waikiki-supplemental-permits.html> and <http://www.honolulu.gov/cms-dts-menu/site-dts-sitearticles/37100-new-supplemental-permit-for-loading-zones-in-waikiki,-effective-january-1,-2020.html>

In October 2017, the Honolulu City Council passed, and the Mayor signed into law Ordinance 17-58. This established the Waikīkī Transportation Management Special Improvement District (WTMSID) which is managed by the Waikīkī Transportation Management Association (WTMA). The WTMA is dedicated to establishing, identifying, and implementing the projects, programs, procedures, and technology that will serve Waikīkī with high-quality, multi-modal, transportation facilities and services and provide effective management of limited curb space.



The Royal Hawaiian, a Luxury Collection Resort CELEBRATES MAKAHIKI

For the eighth consecutive year, The Royal Hawaiian celebrates the Makahiki, the ancient Hawaiian festival honoring Lono, the deity of peace, productivity and harvest on Saturday, January 4, 2020. The day begins at 9 a.m. with the arrival of Lono on the beach fronting the resort. The festivities continue in the Coconut Grove with a special ceremony, storytelling, Hawaiian music and games. The Makahiki is complimentary and open to everyone.

Here's the schedule of events:

9 a.m. – Lono, the Hawaiian deity of the harvest and productivity, arrives on the beach fronting The Royal Hawaiian. Gather on the Ocean Lawn for the ceremonial welcoming oli (chants.)

9:15 a.m. – The formal huaka'i procession brings Lono, dignitaries and guests to Kahua Mokomoko, the traditional name for the hotel's Coconut Grove.

9:30 a.m. – Ceremonial tributes including lei and oli will be presented to Lono.

9:45 a.m. – Tomo Kuriyama, general manager of The Royal Hawaiian welcomes guests

10 a.m. – The Makahiki games begin; led by Shad Kane, respected kupuna and Makahiki Convenor. Includes stone disk rolling, wooden dart sliding, one-legged wrestling, and spear throwing.



Lono is the deity of peace, productivity and the harvest who presides over the ancient Makahiki season that brought together high-ranking ali'i (chiefs) and maka'ainana (citizens). Games that showcased strength, stamina, wit and intelligence; elaborate ceremonies and protocols; oli and hula (chants and dances); competitive surfing; and community-wide feasts were events and activities of the season of Lono.

The four-month Makahiki begins when the constellation Makali'i (Pleiades) rises on the eastern horizon at the same time the sun sets in the west. This usually occurs in November and marks a time for relaxed religious observances and hiatus from warfare and political endeavors. Makahiki represents peace and rejuvenation and is dedicated to Lono, one of the four principal deities in Hawai'i and throughout Polynesia. Farmers, fishermen and artisans presented their yields as a kind of 'auhau or tax tribute. Items of high value include rare bird feathers for the fashioning of 'ahu'ula (cloaks), lei and mahiole (helmets). Other items present-

ed by the maka'āinana included drums and other instruments used in hula, weaponry, kapa (bark cloth), 'umeke (wooden calabashes) and food. These offerings were gratefully accepted by the ali'i nui (ruling chiefs) and their entourage priests, warriors, family members and other lesser chiefs.

In contrast to the peaceful season of Lono is the longer season of Kū extending from mid-February to October. Kū, a god of war, conquest and politics, was primary deity of King Kamehameha.



HYATT REGENCY WAIKIKI SPREADS HOLIDAY CHEER TO MAKE-A-WISH HAWAII®

\$180,000 Raised at Annual Golf Tournament

HONOLULU, HI – Hyatt Regency Waikiki Beach Resort and Spa kicked off the holiday season with a check presentation honoring Make-A-Wish Hawaii, a long-time resort partner. The organization, which grants wishes to children with critical illnesses, received \$180,000 from Hyatt Regency Waikiki Beach Resort and Spa after a successful 13th Annual Swing for Wishes golf tournament. The tournament, which took place on October 3, is one of the largest fundraising tournaments in the state, raising over \$1.2 million since its inception and drawing in hundreds of golfers each year.

“We’d like to extend our sincerest aloha and gratitude to the Hyatt Regency Waikiki Beach Resort and Spa for their continued partnership in changing the lives of our wish keiki,” said Trini Kaopuiki Clark, President and CEO at Make-A-Wish Hawaii. “Their support through this ongoing fundraiser has robustly impacted our organization for the past 13 years, and we are humbled by the dedication, time, and heart that goes into Swing for Wishes each year.”

The Hyatt Regency Waikiki staff presented the giant check to Make-A-Wish Hawaii staff and families in the Great Hall of the Pualeilani Atrium Shops with musical entertainment provided by Tihati.

SERVING THE PLAYERS & FAMILIES OF JAPAN'S OLDEST PROFESSIONAL BASEBALL TEAM



“Tanaka of Tokyo loves the Yomiuri Giants! We are so thankful that we had the opportunity to serve so many players and families of Japan’s oldest professional baseball team!”

Waikiki Beach Hula Show

AT THE KUHIO BEACH HULA MOUND

Kuhio Beach Hula Show – January 2020
Showtime is 6:00 - 7:00 PM.

Authentic Hawaiian music and hula shows by Hawaii's finest halau hula (dance troupes) and Hawaiian performers.

Opens with torch lighting and traditional blowing of conch shell. Tues-Thursday, weather-permitting, 6:30-7:30 p.m. (6:00-7:00 p.m. Nov-Dec-Jan) at the Kuhio Beach Hula Mound, diagonally across Kalakaua Ave. from Hyatt Regency Waikiki Beach hotel at Uluniu Ave.

FREE, outdoors, casual, with seating on the grass; beach chairs, mats, etc. okay. Cameras welcome.

Presented by Hyatt Regency Waikiki Beach Resort & Spa, Hawaii Tourism Authority, City & County of Honolulu and Waikiki Improvement Association. For information, call 843-8002.

Weeknights

Tuesdays & Thursdays – Joan "Aunty Pudgie" Young and Puamelia

Weekends

Sat January 4 – Kapi`olani Ha`o & Kawika Mersberg and Halau Ke Kia'i o Kalamaku

Sat January 11 – Sallie Yoza and Halau O Napuala'ikauika'iu

Sat January 18 – Jack McKeague and Halau Ka Pa Hula O Ka Lei Hulu Hiwa

Sat January 25 – Lilinoe Lindsey and Ka Pa Nani O Lilinoe

Schedule subject to change without notice.

STREET ACTIVITY

IN AND NEAR WAIKIKI (COURTESY OF THE CITY)

MONDAY, JANUARY 20, 2020

DR. MARTIN LUTHER KING JR. DAY PARADE

8:45 AM Roads Close; 12:30 PM Roads Open

DR. MARTIN LUTHER KING JR. DAY PARADE sponsored by Martin Luther King Coalition. This is a First Amendment activity and is expected to have 2,000 marchers, 100 vehicles, 20 floats, 6 bands. It will start at Ala Moana Park, to Ala Moana Blvd., to Kalakaua Ave., to Monsarrat Ave., end at Waikiki Shell Parking Lot in Queen Kapiolani Park. Lane closures start at 8:00 am. Contact: Patricia Anthony Rushing 384-4038 Fax: 693-9982.

HAWAII'S LUXURY



SHOPPING DESTINATION

Luxury Row

2100 Kalakaua Avenue
Waikiki

Luxury Row

2100 KALAKAUA AVENUE
WAIKIKI

IS PLEASED TO ANNOUNCE

CHINESE LION DANCE CEREMONY

FRIDAY, JANUARY 24TH, 2020 AT 6:30 PM

&

SATURDAY, FEBRUARY 1ST, 2020 AT 5:30 PM
AT LUXURY ROW



GOOD FORTUNE AWAITS YOU AT LUXURY ROW!

**PLEASE JOIN US IN CELEBRATING
THE CHINESE NEW YEAR!**

WWW.LUXURYROW.COM

TEL: 808.922.2246 OPEN: 10:00 A.M. - 10:00 P.M.

You'll want to leave room...



BASALT

For reservations call 808-923-5689

for dessert.



BASALT

For reservations call 808-923-5689

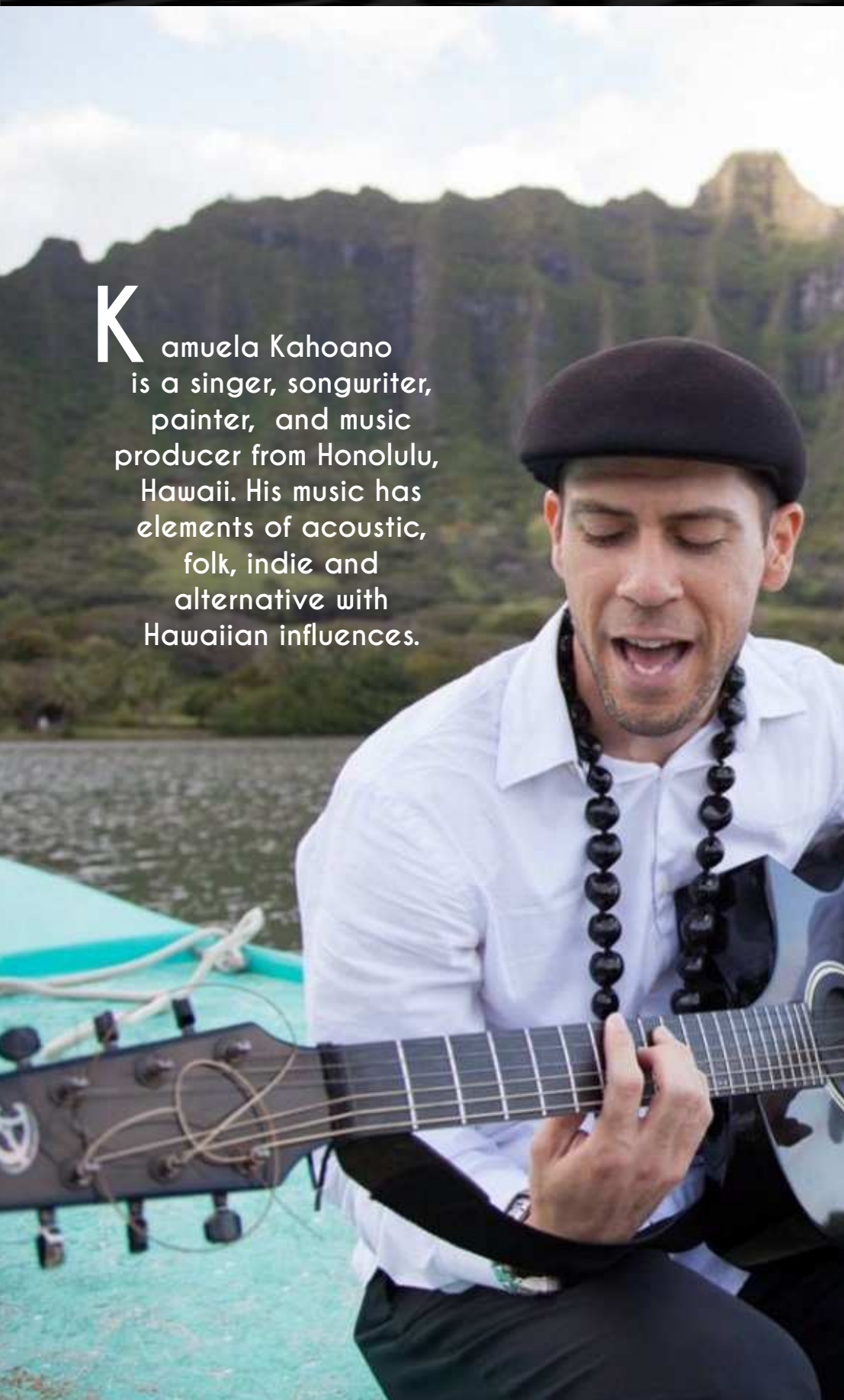
BASALT

AT DUKES LANE MARKET & EATERY



Live Music
6-9 PM Daily

Kamuela Kahoano is a singer, songwriter, painter, and music producer from Honolulu, Hawaii. His music has elements of acoustic, folk, indie and alternative with Hawaiian influences.



Mondays

Mark Caldeira
Acoustic

Tuesdays

Dustin Park
Contemporary

Wednesdays

Karl Maruyama

Thursdays

Kona Abergas
Contemporary

Fridays

Jenna K
R&B, Contemporary

Saturdays

Kamuela Kahoano
Contemporary

Sundays

Harry Koizumi
Acoustic

Contact us about your next event!

- baby or bridal shower
- birthday & anniversary parties
- business lunches • corp events
- wedding receptions
- all of life's celebrations

bills hawaii is a farm-to-table, casual, all-day eatery and multiple green business award winner



Happy New Year!

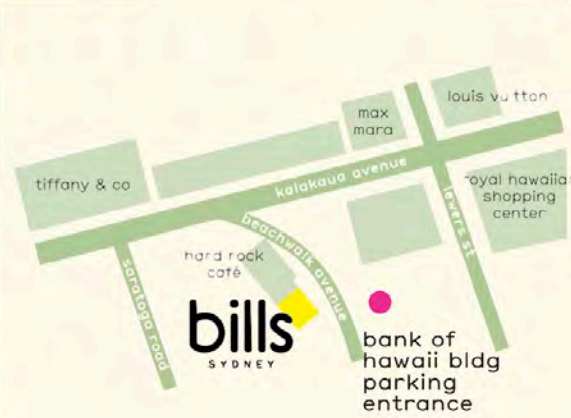


Kama'aina Special

20% discount on food and 2 hours of free parking for kama'aina with valid i.d.



daily happy hour 3-6pm



bills hawaii
280 beachwalk

breakfast 7-11am
lunch 11am-5pm
happy hour 3-6pm
dinner 5-10pm

billshawaii.com
808.922.1500



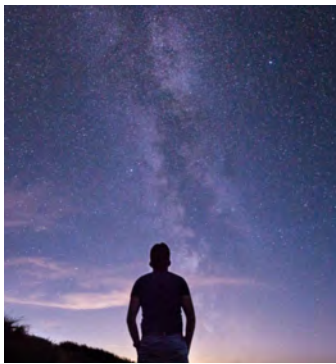
The Hawai'i Convention Center is welcoming 3,000 astronomers, educators, science writers, and guests for the 235th meeting of the American Astronomical Society (AAS) from Jan. 4-8, 2020. The meeting is a joint gathering with the AAS Historical Astronomy Division and High Energy Astrophysics Division.

The AAS, headquartered in Washington, D.C., is the major organization of professional astronomers in North America, with a membership of nearly 8,000 physicists, mathematicians, geologists, engineers, and others whose research and educational interests lie within the broad spectrum of subjects comprising the astronomical sciences. The conference will host a variety of special sessions, workshops, invited talks, and prize lectures by distinguished astronomers, including researchers from the University of Hawai'i and the Polynesian Voyaging Society. Several special events will be free and open to the public.

Stargazing Party at Ala Moana Beach Park
Sunday, Jan. 5, 2020, 7-10 p.m.

Join University of Hawai'i astronomer Roy Gal and friends at Ala Moana Beach Park for a stargazing party. Astronomy enthusiasts of all ages and levels will marvel at the night sky and learn from recognized experts.

JAN 5



Educational Astronomy Event for Honolulu-Area Students
Tuesday, Jan. 7, 2020, 11:30 a.m.-2 p.m.

Students will have the opportunity to participate in hands-on science demonstrations and speak with world-famous scientists and engineers at the forefront of astronomy research. Open to students in grades 6-12 and junior colleges. Registration is required by visiting

JAN 7



JANUARY

UPCOMING EVENTS

with estimated attendance

- 01/04-01/08** 2020 AAS Winter Meeting (3000)
- 01/03** Yamamoto Incentive (475)
- 01/09-01/12** The International Academic Forum (IAFOR) 2020 (180)
- 01/10** Honolulu Cookie Company Holiday Party (300)
- 01/16-01/20** AAU Trans Pacific Championships 2020 (2000)
- 01/23-01/24** Hawai'i Dental Association Convention (3000)
- 01/24-01/26** Tattoo Tour (10000)
- 01/25** 2nd Annual Hawai'i Beer Fest: Winter Edition (2500)
- 01/29-01/31** 2020 Hawai'i ACTE Conference (500)



For additional event details and a full calendar of events, visit hawaii-convention.com.

@HawaiiConventionCenter @HIConventionCtr @HawaiiConventionCenter

HawaiiConvention.com

JANUARY 2020

Hilton Waikiki Beach · Dining & Events



JAN
1-31

A Taste of 2020

All Day, M.A.C. 24/7 &
1pm-12am, LBLE Lounge

Orange is the New Flapjack with our citrus seasonal short stack, **Mandarin Marmalade** (\$18), Long Island meets Blue Hawaii in the **Big Island Iced Tea** (\$12), & **Whiskey Business** (\$13) makes it's gingery debut [See Specials](#)



JAN
25

Chinese New Year Celebration

5:30pm, Lobby

Kung Hei Fat Choy! Happy Year of the Rat, wishing you prosperity in the New Year! It's believed the lion dance wards away bad spirits & brings good fortune. Join us for a colorful & spirited performance by Wah Ngai Lion Dance Association.



JAN
28-29

37 Vines Presents: Old World Wonders

6pm-9pm, Altitude @ 37

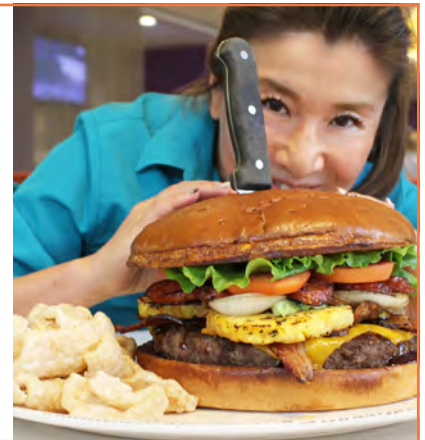
A spectacle of modern wines from the Old World vines of France, Italy & Spain. Enjoy 5 courses & 6 wines, all while the sun sets from our ocean view penthouse. Price \$100/person. Reservations required, [book online now](#) or call 808-921-2525.



New! M.A.C. Momma 5 Lb Cheeseburger Challenge

All Day, M.A.C. 24/7

Introducing the mother of all food challenges: **M.A.C. Momma** is 5 lbs of hamburger heaven, sandwiching 2 Lbs of Black Angus beef between a 1 1/2 Lb brioche bun, fully loaded with 4 slices of cheddar cheese, 6 pieces of thick cut Applewood smoked bacon, 6 slices of Portuguese sausage, 4 grilled pineapple rings, 1 whole avocado, 12 oz of crispy onion rings, 5 tomato slices, 4 oz of teriyaki sauce, green leaf lettuce & a side of cracklin' chicharon. Finish it all in 45 minutes or less & it's free!



ONGOING EVENTS



LIVE MUSIC @
LBLE Lounge (Lobby)
Nightly 7PM-10PM
SUN kristi masuhara
MON sean cleland
TUE lina
WED dave turner
THU & FRI sunway
SAT tahiti rey

4 HAPPY HOURS...
one VERY Happy Hotel
HANG 10 Pool Bar 12pm-2pm
M.A.C. 24/7 2pm-5pm
LBLE Lounge 5pm-7pm
M.A.C. 24/7 12am-3am*

(*excludes Friday & Saturday nights/
Saturday & Sunday mornings)





2020 SPRING PROMOTION

Pamper yourself or give the gift of Nā Ho'ōla Spa with one of our special spring promotions.

1. Spring Facial 50min \$99

Deep Cleansing + Peptide Peel + Facial Massage + Facial Mask + Hydration + Sun Protection

Six Botanical stem cells work to protect from external stressors while peptides rejuvenate and revitalize. Combine the best of science and nature to achieve age-defying result.

2. My Vacation 80min \$225

A full body massage + Express Facial

Full body Lomilomi with various kneading and stroking techniques to sooth pain, relax sore or still muscles. Indulge in the luxury facial with Eminence, famous for Hungarian herbs, fruits and plants are hand mixed with thermal hot spring water.

3. Super fruits - Noni Body Wrap 80min \$175

Hawaiian Body Scrub + Noni Wrap + Facial

Starting with an application of a soothing Noni Elixir, known for its astounding healing and tightening characteristics. The Organic Facial will help you relax in the body cocoon, leaving you feeling hydrated and nourished with a tropical glow.

4. Honeymoon Special for Two 50min \$300

After the big day, you both deserve pampering and quality time together. Enjoy side by side a full body massage with the coconut oil infused with local Hawaiian herbal extracts, and the tropical scents of orange, lemongrass, ginger, and sandalwood. Maui sugar cane scrub is applied on the back. A choice of complimentary tropical juice or sparkling wine after in the relaxation lounge. Make the very most of your special time together.

5. Treasure of the Sea Book one and second is 50% off 50min \$180/80min \$240

Oligomer Mineral + Hawaiian Salt Scrub on the back + Lomilomi Massage + Scalp Massage

This treatment uses Oligomer Massage Concentrate, which preserves all the essential trace elements found in the sea, that to restore deeper relaxation, and wellness. The treatment will be completed with peaceful scalp massage.

Available from January 5, 2020 to April 30, 2020

Above treatments are promotional price and cannot be combined with other discounts. Hawaii State Tax and a 21% service charge will be automatically added to the cost of your services.

Phone: (808) 237-6330 or dial extension 6330. Email: nahoolaspahnlrw@hyatt.com.

Hours 8:30am to 9:00pm. nahoolaspawaikiki.com.



BREAKFAST 8:00-11:30am

LUNCH 11:30am-4:45pm

DINNER 5:00-11:00pm

WKND BRUNCH 8am-2pm Sat/Sun

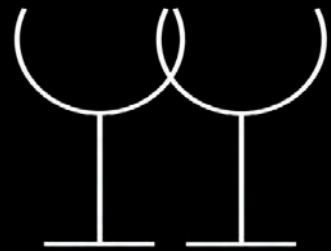


Join us for Happy Hour
Daily 2:00-6:30pm
Late Night 9:30-10:30pm

From a delightful, complete breakfast menu to an authentic Italian lunch and dinner featuring fresh, local produce, the highest quality imported ingredients, pasta made in-house daily, and an award-winning wine list, Il Lupino offers our guests the finest dining experience in Waikiki!



Wine Spectator



BEST OF
AWARD OF
EXCELLENCE



Try our **"Chef's Table"** - a Five-Course Menu chosen and prepared by Executive Chef Marino Rosato. Chef's Table changes daily and is always a delicious surprise of amazing Italian flavors. \$100

Originally from Rome, Chef Rosato won huge acclaim in New York City, and Il Lupino is honored to now offer his award-winning cuisine right here in Hawai'i!

IL LUPINO

TRATTORIA & WINE BAR

Royal Hawaiian Center
Bldg B, Level 1
2 Hours Free Validated Parking

808.922.3400

illupino.com

@illupino

#illupino

Island Vintage Wine Bar



LUNCH/DINNER MENU • islandvintagewinebar.com

SMALL PLATES

Nori Chips

Crispy Nori with Vegan Truffle Aioli. 9

Crispy Purple Sweet Potatoes

Aged Cheddar and Smoked Aioli. 10

Smoked Ahi Dip

Pickled Balsamic-Onions and Crisps. 10

Truffle Mac and Cheese

Fusilli, Truffle, and Cheese. 12

Panko-Crusted Mozzarella (3 Pieces) 9

Poke Bites (3 Pieces)

Spicy Ahi Poke and Nori Chips. 9

Poke Dip

Spicy Ahi Poke with Puffed Black Sesame Crisps. 10

Poke Bento Box

Spicy Ahi Poke and Avocado on Rice. 12

Ask us about suggested wine pairings.

PLATES

Arugula-Peach Salad

Arugula, Peaches, Strawberries, and Pistachios with French Feta and a Balsamic Vinaigrette. 15

Wagyu Burger

House-made Wagyu beef patty with Wasabi Aioli, Lettuce, Tomatoes, Pickles, and Grilled Onions. 18

Pork

Koji Smoked Pork Belly, Sweet Potatoes, Garlic Rice, and House-made Pickled Vegetables. 19

Braised Beef

Mushrooms and Asparagus. 26



Poke Salad

Yuzu-Sesame Dressing. 18

Ahi Burger

Grilled ahi filet, Tomatoes, Bok Choy Coleslaw, and Wasabi Aioli. 16

Steamed Clams

Steamed fresh Kehole clams in white wine garlic broth. 22

Seafood Platter

Island fish, Kehole clam, Kaua'i shrimp, house-made tomato wine sauce. 29

Seared Salmon Belly

Fresh Yuzu and Sweet Onion Salad. 21



CHEESE/CHARCUTERIE

Caprese

Fresh Mozzarella, Tomato, Basil, Olives, Pesto 18

Burrata

Prosciutto de Parma, Honey-Cream Pineapple, Arugula, and Balsamic Pearls 24

Cheese Plate 24

Charcuterie 24

Prosciutto

Papaya, Parmesan, Arugula 18

Check out our menus online.

Wines by the ounce, glass or bottle!

NOTE: Consuming raw or undercooked meat, poultry, seafood, shellfish, or eggs may increase your risk of foodborne illness. Many of our items contain WHEAT, SOY, EGGS, MILK, TREE NUTS, PEANUTS, FISH, or SHELLFISH and are prepared with shared equipment. Please alert your server of special dietary restrictions. Mahalo!

HAPPY NEW YEAR!

Excellent Wine List
Delicious Fresh Food
Friendly Hospitality

LOCATION:

Royal Hawaiian Center
Bldg C, Level 2
next to Island Vintage Coffee

HOURS:

Breakfast
7:30am-3:00pm

Happy Hour
3:00pm-6:00pm

Lunch/Dinner Menu
10:00am-10:00pm

RESERVATIONS:
808.799.9463 (WINE)

Free Validated Parking
for 2 Hours at Royal
Hawaiian Center



cheese plate



nori chips



pork belly



wagyu burger



Mahalo Nui Loa Honolulu Magazine readers for honoring us with the

Gold Hale Aina Award 2019 for BEST THAI FOOD



Lunch 11am - 3pm / Dinner 5-10pm / Happy Hour 3-6pm

Join us for an Exclusive Wine Event



JUSTIN
Wine Pairing Dinner
Tues, February 4th
6:00-8:00 p.m.
\$120/person all-incl.
808.664.4039

Please call us to reserve your spot today. This is a "must" event for all wine-lovers, pairing the exceptional wines from Justin Vineyards and Noi Thai's award-winning cuisine. Limited seating.

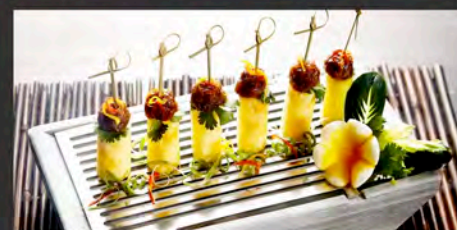
Make your Valentine's Day reservations early!



Noi Thai Cuisine is a multiple award-winning restaurant serving the best Thai cuisine in a beautiful setting, complemented by warm, hospital service. Join us for lunch or dinner, and one of the best happy hours in Waikiki!

Need a private room? We have two beautifully appointed rooms that can accommodate 8-12 people, and Noi Thai is also available for larger parties, up to a buyout for 200!

And we do catering, too!



Noi Thai Cuisine • Royal Hawaiian Center • Bldg C, Level 3 • 808.664.4039 • noithaicuisine.com

FREE 2 HOURS VALIDATED PARKING AT ROYAL HAWAIIAN CENTER

DISCOVER MORE ON THE SECOND FLOOR

CHEESEBURGER BEACHWALK

チーズバーガー ビーチウォーク ・ 치즈버거 비치워크 ・
Cheeseburger Beachwalk 餐馆

HAWAIIAN QUILT COLLECTION

ハワイアンキルトコレクション ・ 하와이안 퀼트 컬렉션 ・
Hawaiian Quilt Collection 夏威夷拼布精品店

HELE MAI SALON - NOW OPEN!

IZAKAYA KAWAGOE - NOW OPEN!

NOA NOA

ノアノア ・ 노아 노아 ・ Noa Noa 服装店

RUTH'S CHRIS STEAK HOUSE

ルースズ クリス ステーキハウス ・ 루스 크리스 스테이크 하우스 ・
Ruth's Chris Steak House 茹斯葵牛排馆

THE UKULELE STORE

ザ・ウクレレ・ストア ・ 우쿨렐레 스토어 ・
The Ukulele Store 乌克丽丽精品店

SPA ROYAL HAWAIIAN

スパ・ロイヤル・ハワイアン ・ 스파 로얄 하와이안 ・
皇家夏威夷水疗

UNDER THE KOA TREE

アンダー ザ コアツリー ・ 언더 더 코아 트리 ・
Under the Koa Tree 夏威夷艺术品店



WAIKIKI
BEACH WALK®

WAIKIKIBEACHWALK.COM |   





- ATM
- Elevator
- Escalator
- Restrooms
- Telephone
- Valet Parking
- Bank
- Gabby Pahinui "Kanikapila" Statue

WAIKIKI BEACH WALK.
 WAIKIKIBEACHWALK.COM |

WAIKIKI BEACH WALK[®] MAP & DIRECTORY

CASUAL DINING & SPECIALTY FOODS

- 21** Beachwalk Café..... 923-1650
- 18** Big Wave Dave Surf & Coffee..... 445-6500
- 7** Café Glace 927-2645
- 11** Honolulu Cookie Company..... 924-6651
- 12** Lanikai Juice..... 479-7215
- 4** Poké Bar..... 888-8616
- 11** Subway 971-3000

- 13** Mahina 924-5500
- 7** Malibu Shirts 923-0306
- 9** Noa Noa..... 923-6500
- 3** Popits..... 922-2885
- 5** Pull-In 462-7201
- 2** Quiksilver..... 921-2793
- 10** Sunshine Swimwear 924-3888
- 2** Ultimate Foot Store, The 380-8660

CONVENIENCE

- 3** ABC Stores..... 926-7799
- 1** First Hawaiian Bank..... 943-4670

JEWELRY & ACCESSORIES

- 13** Carludovica..... 921-8040
- 9** King Jewelry 923-3828
- 6** Na Hoku..... 926-7700
- 2** Quiksilver..... 921-2793

RESTAURANTS

- 1** Cheeseburger Beachwalk 924-5034
- 8** Giovanni Pastrami 923-2100
- 5** Izakaya Kawagoe..... 913-2017
- 19** Roy's Waikiki..... 923-7697
- 11** Ruth's Chris Steak House 440-7910
- 1** Taormina Sicilian Cuisine 926-5050
- 17** Yard House..... 923-9273

GIFTS, ART, SPECIALTY & SERVICES

- 3** ABC Stores..... 926-7799
- 20** Big Wave Dave Surf & Coffee..... 445-6500
- 6** Breakout Waikiki..... 926-1418
- 8** Hawaiian Quilt Collection..... 924-9889
- 2** Hele Mai Salon 888-0502
- 8** Peter Lik Gallery 926-5656
- 16** SoHa Living 240-5040
- 4** Spa Royal Hawaiian..... 384-2520
- 7** Ukulele Store, The..... (808) 888-5469
- 3** Under the Koa Tree 926-8733
- 4** Waikiki Christmas Store..... 924-9627
- 10** Wyland Galleries..... 924-1322

APPAREL & SHOES

- 14** Blue Ginger 924-7900
- 9** Coco Mango..... (424) 388-0115
- 5** Crazy Shirts..... 971-6016
- 15** HiLife..... 926-1173
- 12** Kahala..... 922-0066

Located on Lewers Street between Kalakaua Avenue & Kalia Road
 Open 365 Days | 10AM-10PM

WAIKIKIBEACHWALK.COM |





DINING

RESTAURANTS

Cheeseburger Beachwalk | Giovanni Pastrami | Izakaya Kawagoe | Roy's Waikiki
Ruth's Chris Steak House | Taormina Sicilian Cuisine | Yard House

CASUAL DINING & SPECIALTY FOODS

Beachwalk Café | Café Glace Hawaii | Big Wave Dave Surf & Coffee
Honolulu Cookie Company | Lanikai Juice | Poké Bar | Subway

Located on Lewers Street between Kalakaua Avenue & Kalia Road
Open 365 Days | 10AM-10PM

WAIKIKIBEACHWALK.COM |   



WAIKIKI
BEACH WALK.



Mark Yim
& Friends
Plaza, January 19, 5-6pm

ENTERTAINMENT & ACTIVITIES

JANUARY 2020



WAIKIKI
BEACH WALK

FREE Ukulele Lessons!

Daily, 10:30am & 4:30pm

Presented by The Ukulele Store. Information, Sign-up & Lessons:
2nd floor, Suite 218 or call 888-5469

Quilting Class

10:30am-12:30pm – Tuesdays

Presented by Hawaiian Quilt Collection.
Sign-up & Class: 2nd floor, Suite 221. Phone: 924-9889

Ku Ha'aheo: Hawaiian Music & Hula

Plaza Stage, 4:30-6pm – Tuesdays

Hoopdance Fitness

Plaza, 5pm – January 4, 11, 18 & 25

Contact Sirkka Aho to sign up: www.facebook.com/twirlinghoopgirls
or call 349-5936.

Beach Walk Market

Plaza, 4-8pm

Sunday: January 5, 12 & 27

Wednesday: January 1, 8, 15, 22 & 29

Thursday: January 2, 9, 16, 23 & 30

Featuring grown, made or manufactured products of Hawaii.

Mele Hali'a: "To Recall Fondly" the Brilliant Music of Hawai'i

Free Sunday Concert! – Plaza Stage, 5-6pm

January 19: Mark Yim & Friends

Ka Lei Hula: The Art of Hawaiian Dance

Plaza, Fridays, 4-5pm

Class Registration: (808) 664-0102

Dates, times, performances and activities are subject to change without notice – weather permitting.





NOW OPEN ON THE SECOND FLOOR

WAIKIKI BEACH WALK® IS THRILLED TO WELCOME
THESE EXCITING NEW BUSINESSES!

IZAKAYA KAWAGOE
HELE MAI SALON



WAIKIKI
BEACH WALK®

WAIKIKIBEACHWALK.COM |   

ROYAL HAWAIIAN CENTER CELEBRATES MILESTONE 40TH ANNIVERSARY



This January, we're kicking off our momentous 40th anniversary as Hawai'i's premier shopping, dining, entertainment, and cultural destination. Since opening our doors in 1980, we've welcomed millions of kama'āina and visitors from around the world, and anticipate greeting even more for the next 40 years and beyond.



In celebration of our anniversary, we're calling on the community to join in the festivities and to share their photos of memories at The Center! To capture four decades of shopping, dining, and exploring in the heart of Waikīkī, we invite the public to submit their best photos of moments at Royal Hawaiian Center for the chance to be featured in specialty artwork, at celebratory events, and on social media.



We're currently accepting photos taken on-site via email at aloha@festivalcos.com or online at www.royalhawaiiancenter.com/RHC40th. So many people have created cherished memories at The Center, and we look forward to putting them on display as we celebrate our birthday all year long!

Stay tuned for news and updates on upcoming anniversary festivities taking place throughout 2020.



LUNAR NEW YEAR LIGHTS UP ROYAL HAWAIIAN CENTER



Good luck is abundant at Royal Hawaiian Center, where Lunar New Year celebrations will take place from Thursday, January 16 through Sunday, February 9. Complete with cultural performances, special events, live entertainment, and a limited-time gift with purchase, our festivities provide every guest the opportunity to ring in the Year of the Rat.



We will kick off Lunar New Year on **Thursday, January 16 in The Royal Grove**. From **2:00 to 4:00 p.m.**, Chinese calligrapher **Ina Chang** will offer free calligraphy demonstrations sharing her talent and tips with visitors. At **6:00 p.m.**, the **Wah Ngai Lion Dance Association** will bring thrill and excitement to The Royal Grove with an engaging lion dance and acrobatic performances.

On **Saturday, January 25**, Lunar New Year Day descends upon Royal Hawaiian Center starting at **12:00 p.m.** with another opportunity to see the work of **Ina Chang**. Children’s Chinese and Taichi sword dances will take place at **3:15 p.m.**, while the Hallah Huhm Korean Dance Studio will take the stage at **4:30 p.m.** The day will culminate with an energetic lion dance performance by the Lung Kong Physical Culture Club from **5:00 p.m. to 8:00 p.m.** After weaving their way through The Royal Grove, the lions will dance through the entire Center, making stops at various shops and restaurants.

A unique celestial experience will feature stargazing on **Friday, January 31, from 6:30 to 8:30 p.m.** In partnership with **Stargazers of Hawaii**, The Center is providing guests the opportunity to peer through large telescopes and explore Hawai‘i’s beautiful night sky in search of the moon, planets, star clusters, galaxies and more. Find Stargazers of Hawaii and their telescopes between Buildings A and B, on the Level 4 bridge.

But wait, there’s more! From **January 16 to February 9, 2020**, guests who redeem **\$500** or more in cumulative receipts will be eligible to pick up a complimentary red laisee envelope at Helumoa Hale Guest Services. Each Lucky Laisee envelope will be filled with a lucky number for a prize. Prizes will include our exclusive ALOHA red tote bag – designed by Bethany Georges, Royal Hawaiian Center logo items, and merchandise from participating merchants, as well as gift cards from participating merchants. Lucky Laisee envelopes are limited to one envelope per person, per day, while supplies last.

Ring in the Year of the Rat and enjoy an unforgettable cultural celebration at Royal Hawaiian Center!



HAWAIIAN CULTURE ON DISPLAY AT ROYAL HAWAIIAN CENTER



ROYAL HAWAIIAN CENTER

WAIKĪKĪ PARKING

Enjoy 2 **FREE** hours of parking while you shop & dine with us. Then only \$2 per hour for the 3rd & 4th hours.

Minimum \$10 purchase required for validation.

[LEARN MORE](#)

Beginning on Friday, December 20, in collaboration with Kamehameha Schools, we will host House of Mana Up, a special pop-up bringing their online store to life at The Center in Building A.





HAWAIIAN CULTURE ON DISPLAY AT ROYAL HAWAIIAN CENTER



LĀ PULE SUNDAY	PŌ 'AKAHI MONDAY	PŌ 'ALUA TUESDAY	PŌ 'AKOLU WEDNESDAY	PŌ 'AHĀ THURSDAY	PŌ 'ALIMA FRIDAY	PŌ 'AONO SATURDAY
			JANUARY 1 <i>Fukubukuro</i> 9:30AM: Kenny Endo Taiko Drums, G1 <i>All cultural lessons cancelled</i>	JANUARY 2 12PM: 'Ukulele, HH 1PM: Lauhala, C2 5PM: Pu'uhonua, G1	JANUARY 3 10AM: Hula, G1 12PM: 'Ukulele, HH 1PM: Lei Making, C2 5PM: Hula Auana, G1	JANUARY 4 1PM: Lei Making, C2 5PM: Hālau Kawai'ulaokalā, Kumu Hula Keli'i Puchalsk, G1
	JANUARY 6 10AM: Hula, G1 1PM: Lei Making, C2 3:30PM: Keiki Hula, G1	JANUARY 7 9:30AM: Quilting, FC 10AM: Hula, G1 12PM: 'Ukulele, HH 1PM: Lauhala, C2 5PM: Kawika Trask, G1	JANUARY 8 12PM: Ho'okani Pila, HH 1PM: Lauhala, C2 4PM: Hula, G1 5PM: Malu, G1	JANUARY 9 12PM: 'Ukulele, HH 1PM: Lauhala, C2 5PM: Ching Ohana, G1	JANUARY 10 10AM: Hula, G1 12PM: 'Ukulele, HH 1PM: Lei Making, C2 5PM: Hula Auana, G1	JANUARY 11 1PM: Lei Making, C2 5PM: Hālau Kawai'ulaokalā, Kumu Hula Keli'i Puchalsk, G1
	JANUARY 13 10AM: Hula, G1 1PM: Lei Making, C2 3:30PM: Keiki Hula, G1	JANUARY 14 9:30AM: Quilting, FC 10AM: Hula, G1 12PM: 'Ukulele, HH 1PM: Lauhala, C2 5PM: Kawika Trask, G1	JANUARY 15 12PM: Ho'okani Pila, HH 1PM: Lauhala, C2 4PM: Hula, G1 5PM: Malu, G1	JANUARY 16 12PM: 'Ukulele, HH 1PM: Lauhala, C2 5PM: Pu'uhonua, G1	JANUARY 17 10AM: Hula, G1 12PM: 'Ukulele, HH 1PM: Lei Making, C2 5PM: Hula Auana, G1	JANUARY 18 1PM: Lei Making, C2 5PM: Hālau Kawai'ulaokalā, Kumu Hula Keli'i Puchalsk, G1
	JANUARY 20 <i>Martin Luther King Jr Holiday</i> <i>All cultural lessons canceled</i>	JANUARY 21 9:30AM: Quilting, FC 10AM: Hula, G1 12PM: 'Ukulele, HH 1PM: Lauhala, C2 5PM: Kawika Trask, G1	JANUARY 22 12PM: Ho'okani Pila, HH 1PM: Lauhala, C2 4PM: Hula, G1 5PM: Malu, G1	JANUARY 23 12PM: 'Ukulele, HH 1PM: Lauhala, C2 6:30PM: Pu'uhonua, G1	JANUARY 24 10AM: Hula, G1 12PM: 'Ukulele, HH 1PM: Lei Making, C2 5PM: Hula Auana, G1	JANUARY 25 12PM: <i>Cherry Blossoms Court, G1</i> 1PM: Lei Making, C2 5PM: Hālau Kawai'ulaokalā, Kumu Hula Keli'i Puchalsk, G1
	JANUARY 27 10AM: Hula, G1 1PM: Lei Making, C2 3:30PM: Keiki Hula, G1	JANUARY 28 9:30AM: Quilting, FC 10AM: Hula, G1 12PM: 'Ukulele, HH 1PM: Lauhala, C2 5PM: Kawika Trask, G1	JANUARY 29 12PM: Ho'okani Pila, HH 1PM: Lauhala, C2 4PM: Hula, G1 5PM: Malu, G1	JANUARY 30 12PM: 'Ukulele, HH 1PM: Lauhala, C2 5PM: Pu'uhonua, G1	JANUARY 31 10AM: Hula, G1 12PM: 'Ukulele, HH 1PM: Lei Making, C2 5PM: Hula Auana, G1	LOCAL INFORMATION C2: Bldg. C, 2nd floor FC: Bldg. B, 2nd floor G1: The Grove Stage HH: Helumoa Hale For more information, call Helumoa Hale Guest Services, 808.922.2299

The Royal Grove is an open air venue subject to inclement weather. All activities, events and performances are subject to change without notice. Contact Helumoa Hale Guest Services at 808.922.2299 for the latest information. Standard parking rates apply.

West Ala Moana Center,
Upper Level 4, Ho'okipa Terrace
1450 Ala Moana Blvd.
Lunch 11AM-2PM
Dinner from 5:00PM
TEL 945-3443



Central Waikiki Shopping Plaza, 3F
2250 Kalakaua Ave.
Dinner from 5:00PM
TEL 922-4702



East Ohana Waikiki East Hotel, 1F
150 Kaiulani Ave.
Dinner from 5:00PM
TEL 922-4233



TANAKA of TOKYO

JAPANESE STEAK & SEAFOOD

Honolulu Star Advertiser
Best Japanese Teppanyaki Steakhouse
7th Consecutive Year!

We serve Certified Angus Beef Sirloin and the highest quality Seafood, with impeccable and friendly service, in an atmosphere of excitement, laughter, and warmth.

At Tanaka of Tokyo, diners are always "Honored Guests"....

"Hawaii's Best Japanese Teppanyaki Steakhouse"
- Honolulu Star Advertiser -

"Best Japanese Restaurant in Hawaii" Honolulu Magazine -

"The Best Teppan Room Anywhere" - Zagat Guide -

"The Best Kids Menu in America Contest Winner"
- Restaurant Hospitality Magazine -

"One of the 10 Best Japanese Restaurants in the U.S."
- Five Star Diamond Award -



鉄板焼き・ステーキ&シーフード
田中オブ東京

www.tanakaoftokyo.com

W
WOLFGANG
STEAKHOUSES

Make your Valentine's Day reservations today!



JOIN US FOR OUR ALL-DAY HAPPY HOUR IN THE BAR 11AM - 4:30PM

Draft Beers \$5 • Red & White Wine Specials \$7 • Martinis \$7

\$7 Pupus • Steak Sliders • Hamburger Sliders • Ahi Tartar • Steak Tartar • Tenderloin Kabob • Lobster Crostinis • Mini Loco Moco

\$10 Pupus • Seafood Combo • Tenderloin Medallions \$44.95 • Taste of New York



LUNCH • HAPPY HOUR • DINNER • WEEKEND BRUNCH • PRIVATE EVENT ROOMS

Royal Hawaiian Center, Building C, Level 3 • Validated Parking • www.wolfgangsteakhouse.net

808.922.3600 • opentable.com



Celebrate Valentine's Day at SKY Waikiki!

A la carte specials will be available only on February 14th



Seafood Platter for two \$50

Cocktail shrimp, snow crab leg, Kushi oysters, and merus-cut king crab leg served with rocoto cocktail sauce



Passion Punch \$9

Don Q rum, Salers Aperitif, pineapple, black cherry, and lilikoi



Local Lovin'



Locals: get ready to save and enjoy kamaaina discounts and promotions at SKY Waikiki and Top of Waikiki! Your favorite spots in Waikiki have specials just for you and, don't forget, both venues offer free validated parking in the heart of Waikiki!

Save on your next dinner out! For every \$50 spent at SKY Waikiki or Top of Waikiki, receive a \$5 coupon for your next visit. Coupons may be redeemed at SKY Waikiki or Top of Waikiki; coupons are effective starting one week after visit and expires after 6 months.



For all kamaaina promotions, guests must show valid Hawaii government-issued ID or local industry card to qualify. Kamaaina specials are not combinable with other discounts or promotions.



New Parking Rate:

\$7 WEEKDAY FLAT RATE

Monday through Friday
6:30AM - 1:30PM

WEEKDAY FLAT RATE:

Available in Waikiki Shopping Plaza only.

WEEKDAY EVENING FLAT RATE:

Available in Waikiki Shopping Plaza & Waikiki Business Plaza.

\$7 flat rate: Sunday - Thursday 5PM - Midnight

WEEKEND FLAT RATE:

Available in Waikiki Shopping Plaza & Waikiki Business Plaza.

\$10 flat rate: Saturday & Sunday 6:30AM - Midnight

\$3.00 per half hour before and after flat rate, no validations can be applied.

No overnight parking. Cars left in the lot after closing are subject to tow.

the
Waikiki
SHOPPING PLAZA



WHAT'S HAPPENING AT HYATT REGENCY WAIKĪKĪ BEACH RESORT & SPA AND PUALEILANI ATRIUM SHOPS

Pualeilani Atrium Shops: Pualeilani Atrium Shops will celebrate Chinese New Year and welcome the Year of the Rat. A lion dance is a can't-miss Chinese New Year tradition, which symbolizes luck, health and prosperity. Guests can join in on the fun and "feed" the lion red envelopes as it makes its way through three floors of the Pualeilani Atrium Shops. The free event kicks off at 6:00 p.m. on Friday, January 24.

Body Make Hawaii: New Year, new you? Body Make Hawaii is now open at the Pualeilani Atrium Shops at the Hyatt Regency Waikīkī Beach Resort and Spa. Support all your recovery and pain management needs with percussion massagers, ice products, compression, hydration and health supplements. Body Make Hawaii are partners with Hyperice, Incrediwear, Air Relax, Ice Shaker, BioAstin, Hawaiian Spirulina, and Xtend. Body Make Hawaii is located on the 1st floor, Diamond Head Tower.

Nā Ho'ōla Spa: Pamper yourself or give the gift of Nā Ho'ōla Spa. From January 5 through April 30, choose from one of five spring special promotions, including Spring Facial, My Vacation, Super Fruit Noni Wrap, Honeymoon Special for Two and Treasure of the Sea. To make a reservation online, visit www.nahoolasp-awaikiki.com/menu/promotion/#special. Nā Ho'ōla Spa is located on the 5th floor, take the elevator from the Pualeilani Atrium Shops at ground level.

Ho'okela: Hyatt Regency Waikīkī Beach Resort & Spa's Hawaiian Culture Center, Ho'okela is filled with Hawai'i's rich history in the form of photographs, instruments, books and more. Stop by for lei making, 'ukulele and hula lessons or talk story with professional Hawaiian music performer, songwriter and recording artist Ku'uipo Kumukahi. Ho'okela is open Monday through Friday from 10:30 a.m. to 2:30 p.m. and is located on the 2nd floor, Diamond Head Tower.

Ring in Chinese New Year with International Market Place

WHAT: Welcome the Year of the Rat at International Market Place with a free traditional Chinese lion dance performance and Chinese calligraphy activity.

Lion Dance: 12-2 p.m.

Bring in good fortune and chase away evil spirits by experiencing the lion dance from 12 to 2 p.m. Guests are invited to participate by “feeding” the lion red envelopes. Stick around after the show to snap some pics with the lion and performers. Complimentary red envelopes will be available at Customer Service, while supplies last.

Traditional Chinese Calligraphers: 2-4 p.m.

Guests are invited to learn about traditional Chinese calligraphy and receive a free gold inscribed calligraphy gift. Calligraphers will assist guests in selecting their own Chinese idiom which will be inscribed in gold ink on red paper, symbolizing good luck. Free to guests, while supplies last.

WHEN: Saturday, January 25, 2020 12-4 p.m.

WHERE: International Market Place Queen’s Court, Level 1
2330 Kalākaua Avenue

For more event information, visit www.shopinternationalmarketplace.com/events/international-market-place-chinese-new-year, Instagram: @intlMktplace and in Japanese @intlMktplacejp; Facebook: facebook.com/IntlMktPlace and in Japanese at facebook.com/IntlMktPlaceJP.



Playcation Staycation at Hilton Hawaiian Village



Rates start at \$176 and include 50 percent off parking plus dining discounts from January - March.

With Hilton Hawaiian Village's "Playcation Staycation Package," the entire ohana can enjoy a Waikiki getaway while scoring some serious savings.

This special kama'aina rate starting at \$176 per night, includes value-added bonuses, and is available to book from Jan. 8 - March 25, 2020.

In addition to great rates in one of Hilton Hawaiian Village's five prestigious towers, kama'aina will receive 50 percent off daily self-parking and 15 percent off on meals at signature restaurants Bali Steak & Seafood, Tropics Bar & Grill, Rainbow Lanai, and Hau Tree Cantina, in addition to quick service outlets like Wiki Wiki Marketplace and Lagoon Grill. Locals can also experience the Waikiki Starlight Luau® and relax and the Mandara Spa.

Hilton Hawaiian Village's Staycation Playcation Kama'aina Package

- Jan. 8 - March 25, 2020
- Rates starting at \$176 per night
- 50 percent off daily self-parking (for all cars assigned to each room)
- 15 percent off select dining outlets including Bali Steak & Seafood, Tropics Bar & Grill, Rainbow Lanai, Hau Tree Cantina, Wiki Wiki Marketplace and Lagoon Grill.
- 15 percent off tickets to Waikiki Starlight Luau® at Hilton Hawaiian Village
- 10 percent off Mandara Spa treatments

To book the Staycation Playcation package, please call 1-800-HILTONS or visit www.HiltonHawaiianVillage.com/kamaaina.



WAIKĪKĪ
IMPROVEMENT
ASSOCIATION

Wikiwiki Wire **GUIDELINES**

Wikiwiki Wire is published on the first Friday of each month. If you would like to share your news with other members, please send your info to: editor@waikikiimprovement.com.

Submission Deadline

Waikīkī-related news and information submitted by members (or their PR agencies) for the Wikiwiki Wire newsletter should be received no later than **5 PM THURSDAY, ONE WEEK PRIOR** to the newsletter's publication and distribution on the first Friday of each month.

News & Stories: Please submit any Waikīkī-related stories/articles as a Word doc and include photos to accompany stories/ articles. For best results, please upload photos as a separate JPEG attachment - maximum 2 MB each image.

Flyers/PDFs: Waikīkī-related flyers & PDFs are welcome but must be formatted to an 8.5" x 11" size and must look like advertising flyers and not press releases.

Press Releases: Please submit Waikīkī-related press releases as a Word doc. Press Releases that do not fit within one page of the Wikiwiki Wire newsletter will be returned for editing.

Photos: For best results, please upload photos as a separate JPEG attachment - maximum 2 MB each image.



WAIKĪKĪ IMPROVEMENT ASSOCIATION

We are a cross-section of business, government and the community; our members care about the future of this special place - Waikīkī.

For more than 40 years, the Waikiki Improvement Association has remained true to its objective: to improve, enrich and beautify Waikīkī for the benefit of residents and visitors alike and to promote conditions conducive to the economic and cultural good and for the betterment of the entire community.

HAWAIIAN DIACRITICAL MARKS

Waikīkī Improvement Association recognizes the use of diacritical marks (i.e., glottal stop (ʻ), macron (ā) in place names of Hawaiʻi, such as Waikīkī and Kalākaua Avenue and will include them whenever possible. We also respect the individual use (or not) of these markings for names of organizations and businesses.

There will also be times when we may not have a chance to add or change the markings in all of the articles submitted and when that happens, e kala mai.