



WAIKĪKĪ IMPROVEMENT ASSOCIATION

# *Wikiwiki Wire*

*E-newsletter keeping you up-to-date on Waikīkī news, features, trends and more!*



# Contents

- 3 PROJECT UPDATE: ALA WAI CANAL
  - 5 KUHIO-KAIOLU PUBLIC PARKING LOT OPEN
  - 6 WAIKĪKĪ BEACH HULA SHOW SCHEDULE
  - 7 "OUTSTANDING GENERAL MANAGER OF THE YEAR"
- 

## WAIKIKI HAPPENINGS

SONNY POPS EXHIBIT AT LUXURY ROW

BASALT'S DAILY PRIX FIXE DINNER, VALENTINE'S DAY SPECIAL, AND LIVE MUSIC DAILY

BILLS HAWAII

HILTON WAIKĪKĪ BEACH'S FEBRUARY DINING & EVENTS

CELEBRATE VALENTINE'S WEEK WITH NĀ HO'ŌLA SPA

HALEKULANI'S FEBRUARY EVENTS

HAWAII CONVENTION CENTER'S UPCOMING FEBRUARY EVENTS

IL LUPINO'S VALENTINE'S DAY MENU

ISLAND VINTAGE WINE BAR

NOI THAI CUISINE EXCLUSIVE WINE EVENT

WAIKĪKĪ BEACH WALK FEBRUARY'S ENTERTAINMENT AND ACTIVITIES, FREE SUNDAY CONCERT AND COMPLIMENTARY PARKING

HAWAII PRINCE GOLF CLUB - \$46 TEE TIMES

ROCKY JAPANESE STEAK TEPPAN RESTAURANT - VALENTINE'S DAY SPECIALS

ROYAL HAWAIIAN CENTER'S CULTURAL PROGRAMMING, NEW MERCHANTS, EVENTS AND MORE

TANAKA OF TOKYO - HAWAII'S BEST 2019

WOLFGANG'S STEAKHOUSE VALENTINE'S DAY MENU

CELEBRATE VALENTINE'S DAY AT SKY WAIKĪKĪ

VALENTINE'S DAY AT TOP OF WAIKĪKĪ

WAIKĪKĪ SHOPPING PLAZA'S NEW WEEKDAY FLAT RATE PARKING

HARRIS AGENCY IN THE HEART OF WAIKĪKĪ

WHAT'S HAPPENING AT HYATT REGENCY WAIKĪKĪ BEACH RESORT & SPA AND PUALEILANI ATRIUM SHOPS

VALENTINE'S AT AZURE RESTAURANT

---

WIA'S WIKIWIKI WIRE GUIDELINES

ABOUT WAIKĪKĪ IMPROVEMENT ASSOCIATION

# PROJECT UPDATE:

# Ala Wai Canal

The State Department of Land and Natural Resources (DLNR) has awarded a local construction firm, Hawai'i Harbors Constructors, for dredging operations and sea wall repair of the Ala Wai Canal. This ongoing project by the State is expected to result in improved reliability and performance of the Ala Wai canal for stormwater flow. The state project includes dredging and repairing two sections of sea wall along the canal. The seawall repair portion started in November 2019; the dredging will start in mid-February. The project is expected to be completed by end of 2020.



PHOTO: HAWAII TOURISM AUTHORITY

The Waikiki Improvement Association is working with the DLNR Engineering Division and local officials to monitor the project progress and report to our members and the broader Waikiki community on the project status.

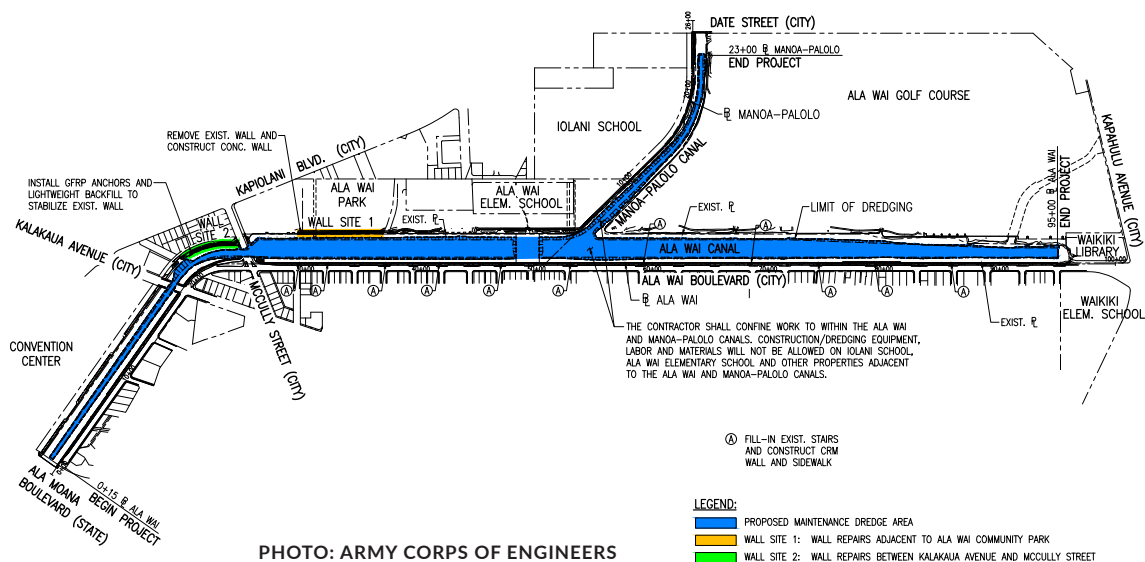
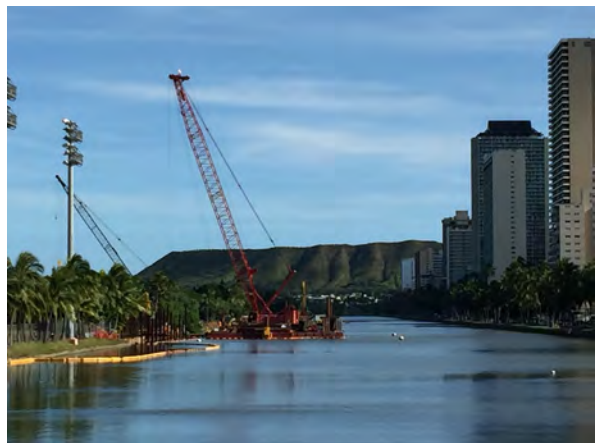


PHOTO: ARMY CORPS OF ENGINEERS

The project entails canal dredging depths between -12.0' and -6.0' with an estimated total volume of dredging 186,000 cubic yards. According to the state, the dredged material is suitable for offshore ocean disposal at an EPA South Oahu Ocean Dredged Material Disposal Site. The last time DLNR dredged the canal was in 2002 using a similar barge-mounted dredging system. The seawalls being repaired include two separate sections; the Mauka side of the Ala Wai canal fronting the Ala Wai Community Park and between the Kalakaua Avenue and McCully Street bridges. No additional height is being added to the seawalls during this project. The work hours are from 7am-10 pm Monday - Saturday, and 9 am-10 pm Sundays and Holidays.

The long-term benefits of this project include primarily maintaining the ability of the canal to efficiently convey storm water flows to the ocean thus reducing the risk of terrestrial flooding. Other benefits include water quality improvements and improving the aesthetics and access and recreational use of the canal. Project information including plans and tentative schedule can be found on DLNR Engineering Division website, <http://dlnreng.hawaii.gov/ala-wai-canal-dredging/>



ABOVE PHOTOS: WBSIDA

# Kūhiō-Kaiolu Parking Lot Open

The Kūhiō-Kaiolu Public Parking Lot is open! This long-awaited opening adds 50 parking spaces for public parking use. The 50 spaces are coin metered (bring lots of quarters) and cost \$1.50 per hour. The lot is open 24 hours with a maximum of 5-hour parking.



Access is off-of Kūhiō in either direction on the continuation of Kaiolu Street marked with a dead-end sign, although it looks like another driveway into the Ritz complex. The Waikīkī Transportation Management Association (WTMA), working with the City's Department of Transportation Services, will be adding parking signs on Kūhiō Avenue to identify the lot. The WTMA will be looking to add parking pay stations to provide easier payment options including credit cards. The adjacent park is open from 7 AM to sunset most days for public use.



# *Waikīkī Beach Hula Show*

## AT THE KŪHIŌ BEACH HULA MOUND

**SHOW TIME CHANGES TO 6:30-7:30 PM**  
**FEBRUARY 2020**

Authentic Hawaiian music and hula shows by Hawaii's finest halau hula (dance troupes) and Hawaiian performers. Opens with torch lighting and traditional blowing of conch shell. Tues-Thurs-Sat, weather-permitting. 6:30-7:30 p.m. (6:00-7:00 p.m. Nov-Dec-Jan) at the Kūhiō Beach Hula Mound, diagonally across Kalakaua Ave. from Hyatt Regency Waikīkī Beach hotel at Uluniu Ave. FREE, outdoors, casual, with seating on the grass; beach chairs, mats, etc. okay. Cameras welcome. Presented by Hyatt Regency Waikīkī Beach Resort & Spa, Hawaii Tourism Authority, City & County of Honolulu and Waikīkī Improvement Association. For information, call 843-8002.

### **Weeknights**

Tuesdays - Ainsley Halemanu and Hula Halau Ka Liko O Ka Palai

Thursdays - Joan "Aunty Pudgie" Young and Puamelia

### **Weekends**

Sat February 1 - Kapi`olani Ha`o & Kawika Mersberg and Halau Ke Kia'i o Kalamaku

Sat February 8 - Lilinoe Lindsey and Ka Pa Nani O Lilinoe

Sat February 15 - Sallie Yoza and Halau O Napuala'ikauika'iu

Sat February 22 - Coline Aiu and Halau Hula O Maiki

Sat February 29 - Shirley Recca and Halau Hula O Namakahulali

Schedule subject to change without notice.

## DEBI BISHOP NAMED “OUTSTANDING GENERAL MANAGER OF THE YEAR” AT AHLA AWARDS



Debi Bishop, Hilton Hawaiian Village’s managing director, was recently named “Outstanding General Manager of the Year (Large Property)” at the American Hotel & Lodging Association (AHLA) and American Hotel & Lodging Foundation’s (AHLA Foundation) 2020 Stars of the Industry Awards.

The awards are the industry’s highest honors and the foundation’s premier fundraiser. Stars of the Industry winners were selected from top hotel employees across the country, culled from more than 300 nominations across every company and numerous career pathways.

Debi Bishop is a veteran general manager, overseeing more than 2,000 team members at the largest property in Hilton’s nearly 5,900 hotel portfolio. Since her start in 2016, she has driven record-breaking occupancies and revenues, constantly looking for opportunities to enhance her guests’ experience.



ALoha OE.

LUXURY ROW

×

SONNY POPS

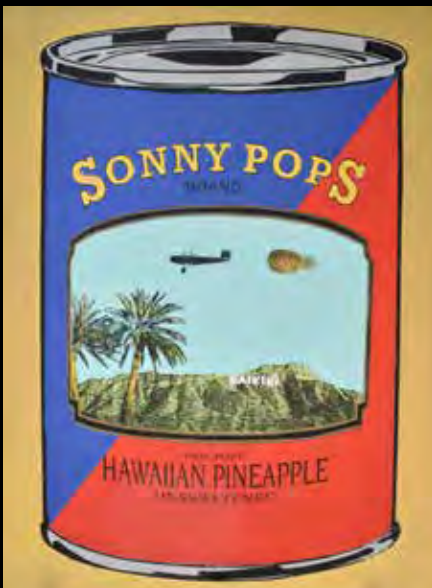
INVITE YOU TO

# SONNY POPS

HAWAII'S AMBASSADOR OF NU'U POP-ART  
30 YEAR RETROSPECTIVE  
POP-UP EXHIBITION & SALE  
FEATURING ORIGINAL ARTWORK  
FROM  
THE ICON SMILE COLLECTION

THE EXHIBIT WILL BE OPEN DAILY TO THE PUBLIC  
FROM 12:00 PM TO 10:00 PM

FRIDAY, FEBRUARY 14<sup>TH</sup>, 2020 - FRIDAY, FEBRUARY 28<sup>TH</sup>, 2020



Sonny Pops is a point of view, an attitude. Sonny's Nu'u Pop, the ICON SMILE COLLECTION, looks like Hawaiian pop, but it is Conceptual. The idea was to create a Hawaiian infused pop parody of pop artists with an island perspective and point of view. Part pop with some Dada moments and a guiding concept, Sonny Pops was created to entertain, amuse and evoke Nu'u ways of looking at familiar pop art. This fusion of pop and Hawaiian iconography was created to be fun.

Event location:  
**LUXURY ROW**  
AT 2100 KALAKAUA AVENUE

COMPLIMENTARY VALET PARKING



*Sonny Pops*



# BASALT



SERVED 5 – 9:45 PM | \$48

## Prix Fixe Dinner

### 1st Course

CHOICE OF

#### Bowl of Lobster Bisque

Caramelized fennel, crème fraîche

OR

#### Mixed Greens

Waipoli lettuce, tomato, heart of palm, watermelon radish, soy-shallot vinaigrette dressing

### 2nd Course

CHOICE OF

#### New York Steak

10oz Sterling Silver Beef, Parisienne style gnocchi, baby arugula, fennel pollen, fried garlic

OR

#### Miso Marinated Cod

Bok choy, shiitake mushroom, dashi nage, charred scallion, micro shiso

### 3rd Course

CHOICE OF

#### Macadamia Nut Tart

Pineapple compote, lavender whipped cream

OR

#### Grand Marnier Chocolate Mousse Cake

Dark chocolate devil's food cake, vanilla creme anglaise, fresh strawberry

CONSUMING RAW OR UNDERCOOKED MEATS, POULTRY, SEAFOOD, SHELLFISH OR EGGS  
MAY INCREASE YOUR RISK OF FOODBORNE ILLNESS

### OPEN DAILY

#### Breakfast:

7:00 AM-2:30 PM

#### Lunch:

11:00 AM-2:30 PM

#### Dinner:

5:00 PM-10:00 PM

#### Bar:

7:00 AM-10:30 PM

#### Happy Hour:

3:00 PM-5:00 PM

.....

Complimentary parking validation for BASALT customers at the Hyatt Centric Waikiki Hotel

For reservations call  
808-923-5689



Executive Chef  
Keith Kong

 BasaltWaikiki





# *Valentine's Day*

*Dinner Specials from February 11<sup>th</sup>  
thru February 16<sup>th</sup>*

## **STARTERS**

### *Oysters on the Half Shell*

minus 8 mignonette

Half Dozen \$24 Full Dozen \$44

### *Ahi & Beet Tartare* \$16

Raspberry vinaigrette, shiso, crispy beet chip

## **ENTREES**

### *Seafood Ravioli* \$36

Lobster, shrimp, ricotta, fines herbs,  
garlic wine tomato sauce

### *Dry Aged Duck Breast* \$39

Pommes puree, roasted root vegetables,  
apricot chutney, port sauce

*Full dinner menu will be available*

**BASALT**  
AT DUKES LANE MARKET & EATERY

For Reservations (808) 923-5689

# BASALT

AT DUKES LANE MARKET & EATERY



Live Music  
6-9 PM Daily



## Mondays

Mark Caldeira  
Acoustic

## Tuesdays

Dustin Park  
Contemporary

## Wednesdays

2/5 & 19 Lina Robbins-Tamure: R&B  
2/12 Devlov: R&B  
2/26 Liam Moleta: Contemporary

## Thursdays

Kona Abergas  
Contemporary

## Fridays

2/7 & 21 Jeremy Hirokawa:  
Hawaiian, Slack Key  
2/14 & 28 Jenna K: Contemporary

## Saturdays

2/1 Karl Maruyama:  
Classic, Contemporary  
2/8 Kam Omizo: Contemporary  
2/15 Brian Keith Espiritu:  
R&B, Contemporary  
2/22 Kamuela Kahoano:  
Acoustic, Folk  
2/29 Chris Mercado:  
Contemporary

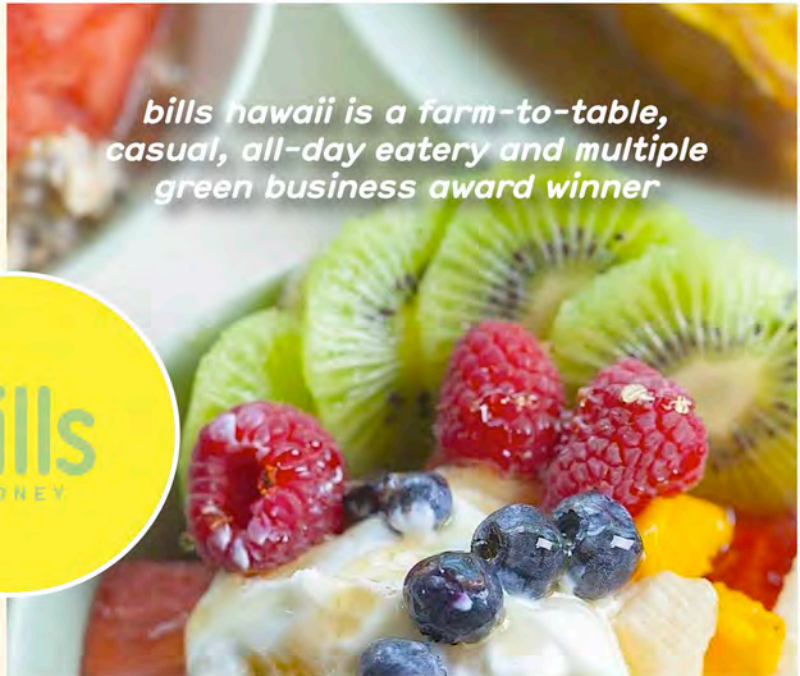
## Sundays

Harry Koizumi: Acoustic

# Kameron Omizo



Celebrate **Valentine's Day** at bills  
 Friday, February 14th



bills hawaii is a farm-to-table, casual, all-day eatery and multiple green business award winner

## Kama'aina Special

20% discount on food for kama'aina with valid i.d. (except happy hour)



daily happy hour 3-6pm



**bills hawaii**  
 280 beachwalk

breakfast 7-11am  
 lunch 11am-5pm  
 happy hour 3-6pm  
 dinner 5-10pm

[billshawaii.com](http://billshawaii.com)  
 808.922.1500

# FEBRUARY 2020

Hilton Waikiki Beach · Dining & Events



FEB  
1-29



## More to Love

All Day, M.A.C. 24/7 &  
1pm-12am, LBLE Lounge

Our seasonal short stack, **Must Love Mochi** (\$18) is a whole lot to love, generously topped with chantilly whip, fresh strawberries, dark chocolate chips & Oreo crumble. Cupid's cocktail specials are equally tempting... ([See Specials](#))

FEB  
14



## Valentine's Dinner for Two

5pm-9pm, M.A.C. 24/7

Love is in the air! Treat your Valentine to an indulgent 3-Course Dinner for two at M.A.C. 24/7. Delectable choices like grilled black angus filet of beef & piña colada crème brûlée. Price \$99/couple. Reservations recommended, call 808-921-5564 ([See Menu](#))

FEB  
25



## Pancake Day

All Day, M.A.C. 24/7

Tuesday, Feb. 25th is Pancake Day! Join us at M.A.C. 24/7 and take the pancake pledge – we're donating twenty percent of all pancake sales to HUGS Hawaii, supporting families of children with life-threatening illness. Plus, FREE samples in the lobby 3pm-4:30pm.

FEB  
26

## Waikiki Comedy Club

8:30pm, Executive Lounge (Lower Lobby)

Featuring some of the nation's top stand-up comics, get ready for a night of laugh-out-loud fun! Waikiki Comedy Club producers have been entertaining audiences since 1988, and are now bringing their showcase of hilarious stars to Hilton Waikiki Beach. Tickets \$25, available via [eventbrite.com](http://eventbrite.com) or at the door (doors open at 8:00pm).



## ONGOING EVENTS



**LIVE MUSIC @**  
**LBLE Lounge (Lobby)**  
Nightly 7PM-10PM  
SUN kristi masuhara  
MON sean cleland  
TUE lina  
WED dave turner  
THU & FRI sunway  
SAT tahiti rey

**4 HAPPY HOURS...**  
**one VERY Happy Hotel**  
HANG 10 Pool Bar 12pm-2pm  
M.A.C. 24/7 2pm-5pm  
LBLE Lounge 5pm-7pm  
M.A.C. 24/7 12am-3am\*

(\*excludes Friday & Saturday nights/  
Saturday & Sunday mornings)





A Week of R&R

# Romance & Relaxation

Celebrate Valentine's week with

## Nā Ho'ōla™ Spa

*Monday 2/10/20: Truly, Madly, Deeply*

50min \$180/80min \$260

Release tension from the mind and body with Oligomer Massage Concentrate, completed with a peaceful scalp massage to restore deeper relaxation and wellness.

*Tuesday 2/11/20: A Walk to Remember*

50min \$180. / 80min \$260.

A must try experience that incorporates La'a Pea. A full body massage thru the feet, this unique Hawaiian foot therapy is for healing and detoxing.

*Wednesday 2/12/20: Let's get Fizzical*

80min \$250

This champagne infused sugar scrub leaves the skin feeling renewed. Champagne scented body butter is then massaged with Kukui and Macadamia oils to nourish and deeply hydrate the skin.

*Thursday 2/13/20: Not Just a Pretty Face*

50min \$165. / 80min \$235

A customized facial that is personally selected with a blend of organic products designed to restore essential elements to your skin. This includes cleansing, exfoliation, stone facial massage, a customized mask, and a soothing massage to the neck and shoulders. The 80 minute treatment includes back scrub.

*Friday 2/14/20: It takes Two to Tango*

50min \$300/per couple

Romantic couple's full body massage with coconut oil infused into local Hawaiian herbal extracts, paired with tropical scents of orange, lemongrass, ginger, and sandalwood. Also accompanied with Maui sugar cane back scrub and ends with complimentary sparkling wine.

Book from  
2pm-4pm  
and receive  
20% off

HYATT REGENCY WAIKIKI RESORT & SPA  
nahoolaspawaikiki.com | 808-237-6330

Hawaii state tax and a 21% service charge will be automatically added to the cost of your services  
State of Hawaii Lic No1466/3399

WINE BAR  
CATTLEYA  
AT ORCHIDS

**WineSense at Cattleya**

Join us for an informal and informative tasting with conversation by a visiting Wine Maker, resident Wine Professional, and/or notable Industry Expert. (Guests may arrive and join the conversation at any time between 4:30 and 7:30 pm). \$69 per person accompanied with light bites provided by Orchids Chef de Cuisine. Reservations are recommended.

**February 6: Rieslings** – Join Beau Kennedy for a conversational taste as he explores Rieslings of varying ages from Germany.

**February 20: Halekulani Showcase** – Join us for a conversational taste as we explore our assemblage of “Designer” wines.



**Imperial Hotel  
Promotion**

**February 20 – 23, 2020**

Imperial Hotel will be celebrating their 130<sup>th</sup> anniversary. In honor of this special landmark, Imperial Hotel Tokyo’s Executive Chef,

Yu Sugimoto, will be creating a special pre-fixe course menu at La Mer on Thursday, February 20<sup>th</sup> and special dishes at Orchids February 21 – 23, 2020.

**Valentine’s Day at Halekulani Bakery & Restaurant  
February 14, 2020**

Celebrate the most romantic day of the year at Halekulani Bakery & Restaurant. Chef de Cuisine, Aaron Furuto, has created a special four course meal for lunch and dinner as follows: Kualoa Oysters with Cucumber, Lime, and Hawaiian Chili Pepper Granita, Hirabara Mix Greens, Sumida Farm Watercress with Strawberry, Mozzarella Pearls with Balsamic Vinaigrette, Beef Wellington with Cherry Port Wine Sauce and Roasted Seasonal Vegetables, and a special dessert. Lunch: 11:30 am to 1:30 pm and Dinner: 5:30 – 8:30 pm. \$59 per person.

Please call 808-931-6673 to reserve a table.

**Halekulani Living TV  
featured clip – Lady of the Lounge**

Our multimedia platform connects guests with the arts, style, food, and people of Hawaii with programming focused on the art of living well. Living TV consists of three programs: “The Art of Living” (celebrating individuals in constant pursuit of mastery in their art forms), “Halekulani Film Selections” (a curation of the best independent films, presented by Hawaii International Film Festival – HIFF), and “Our partners” (unique arts and culture through stories collected from Halekulani’s partners and friends. This month, we feature clip “Lady of the Lounge,” featuring Maggie Herron, Na Hoku Hanohano Award winning Jazz pianist at Lewers Lounge. To view this clip, please visit:

[halekulaniliving.tv/watch/lady-of-the-lounge/](http://halekulaniliving.tv/watch/lady-of-the-lounge/)



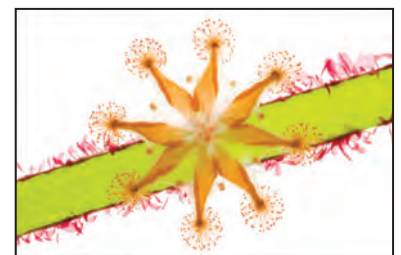
**Monthly Living Well Interactive**

**February: Rekindle the Romance  
Saturday, February 8th at 11:00 am  
Executive Conference Room**

Join resident Lifestyle Coach Kamala Skipper, CHHC, in this interactive workshop and learn creative ways to fall in love all over again. Essential Oils and Organic Chocolates provided. Come on your own or with your partner. Lectures are \$25 per person and include complimentary validated parking.

**HALEKULANI GALLERY – SPINELESS  
Current to February 10, 2020**

The Halekulani Gallery features stunning images by acclaimed photographer Susan Middleton, who specializes in the portraiture of rare and endangered species, and whose most recent work reveals marine invertebrates that are usually hidden below the ocean’s surface.





## AMAZING COMIC CON ALOHA

Feb. 21-23, 2020

### Comic Con Geeks Rejoice!

The 2020 Amazing Comic Con Aloha is coming to the Hawaii Convention Center Feb. 21-23 with a full roster of exciting events and compelling guests sure to please attendees from the most experienced cosplayer to the casual comic book fan.

Billy Dee Williams, better known as Lando Calrissian of Star Wars, is headlining the guest list for this highly entertaining event. Other guests include Power Ranger actors Jason David Frank and Johnny Yong Bosch; Honolulu local and Marvel cover artist David Nakayama; and an extensive list of additional actors, comic artists and animation voice actors.

As always, attendees will view hundreds of cosplayers adorned in colorful costumes portraying some favorite sci-fi and comic characters. A full convention hall of exhibitors, a video game arena, and a full schedule of events for families and adults will round out the weekend. Kids ages 10 and under are free and Sunday Feb. 23 is Kids Day.

For more information, go to <http://www.AmazingComicConAloha.com>.



## FEBRUARY UPCOMING EVENTS

with estimated attendance

- 02/04-02/06** Pacific Water Conference (800)
- 02/08-02/12** Aquaculture America (1500)
- 02/08** 2nd Annual Hawaii Beer Fest (2500)
- 02/14-02/17** AAU Hawai'i Grand Prix Volleyball & Basketball (2500)
- 02/15-02/17** Hawai'i Fustal Cup 2020 (700)
- 02/21-02/23** Amazing Comic Con (30000)
- 02/22** Smooth Jazz Concert (450)
- 02/26-02/27** Career and Technical Student Org Convention (1000)
- 02/29** Taking Control of Your Diabetes (1200)



Feb 08 | Hawaii Convention Center  
2nd Annual Hawaii Beer Fest  
Winter Edition

For additional event details and a full calendar of events, visit [hawaii-convention.com](http://hawaii-convention.com).

 @HawaiiConventionCenter  @HIConventionCtr  @HawaiiConventionCenter

[HawaiiConvention.com](http://HawaiiConvention.com)





# IL LUPINO

TRATTORIA & WINE BAR

## VALENTINES DAY MENU

FEBRUARY 14TH TO 16TH 12PM TO 11:30PM

Royal Hawaiian Center  
Bldg B, Level 1  
2 Hours Free Validated Parking  
illupino.com • @illupino  
**808.922.3400**

### SALUMI E FORMAGGI

PICK TWO 13      PICK FOUR 26  
Chef's Selection of Meats & Cheeses

#### GARLIC BREAD

ガーリックブレッド Freshly Baked, Garlic and Herb Butter, Pomodoro Topped, Parmesan

FOUR PIECE 9      EIGHT PIECE 15  
TWELVE PIECE 22

### APERITIVO

#### OYSTERS ON HALF SHELL\*

3 or 6 Oysters half Shell, Champagne Mignonette  
3 for 14/ 6 for 24

#### AHI TUNA TARTAR\* RAW 🐟

マグロのタルタル Fresh Caught Ahi Tuna, Arugula, Avocado, Crostini, Ginger & Lemon and Extra Virgin Olive Oil dressing 25

#### GRILLED OCTOPUS\*

グリルしたタコ Roasted Potato & Cherry Tomato, Mixed Greens, Pesto and Aioli 23

#### MEATBALL\*

ミートボール Prime Veal, Pork and Beef Meatball, Pomodoro Sauce, Parmigiano Reggiano Shavings 16

### INSALATA

#### CEASAR SALAD

シーザーサラダ Romaine Lettuce, Parmesan Cheese, Extra Virgin Olive Oil, Anchovy, Eggs, Crispy Croutons, Parmesan Flakes 16

#### CAPRESE SALAD VG

カプレーゼサラダ Local Hau'ula Tomato, Fresh Mozzarella Cheese, Extra Virgin Olive Oil, Pesto 21

#### SHRIMP SALAD\*

エビのグリルサラダ Grilled Shrimp, Local Mixed Greens, Cherry Tomato, Shaved Red Onion, Lemon Vinaigrette 34

GRILLED SHRIMP 12, ANCHOVY 4, GRILLED CHICKEN BREAST 8

### PRIMI

#### GAMBERI 🦞

エビのカッペリーニ  
Tiger Shrimp In A Garlic, Cherry Tomato, Tomato Bisque Sauce, Basil  
Single 33 / Family style 115

#### LASAGNA

ラザニア Hand made Spinach Pasta layered with Bolognese and Pomodoro Sauce 30

#### LOBSTER RAVIOLI

ロブスターのラビオリ  
House made Pasta, Lobster, Ricotta & Macarponne Cheese Ravioli, Parmesan, Truffle Cream Sauce 35

#### BOLOGNESE

ボーローグネージ  
Veal, Pork & Beef in hearty Pomodoro Sauce, Fresh Pasta, Parmesan Single 32/ Family style 96

### SECONDI

#### AQUAPAZZA\* 🦪 GF

オパカパカ Fresh catch of the Day in a light Spicy Tomato White Wine Broth with Shrimp, Mussels, Clams 48

#### TAGLIATA DI MANZO\* GF

ニューヨークステーキ 16 oz Grilled Center cut Prime, Arugula, Shaved Parmigiano, Balsamic Glaze 16 oz 90/ 32 oz 160

#### HALF RACK OF LAMB\*

ラムハーフラック Grilled Domestic Half Rack of Lamb Marinated in Extra Virgin Olive Oil, Mediterranean Herbs Half Rack 55/ Full Rack 99

#### VEAL CHOP\*

仔牛チヨップ 8oz Grilled prime Veal Chop, Seasonal Segetables 55

### SIDES DISHES

ROASTED VEGETABLES IN SEASON 16

ASPARAGUS・ BROCCOLI 15

ROSEMARY ROASTED POTATOES 10





# ISLAND VINTAGE WINE BAR



Classic and Natural Wines | Organic Wines | Mimosas | Local Beer and Cocktails | Breakfast, Lunch, and Dinner | Happy Hour  
HOURS: Daily 7:30AM - 11PM © Royal Hawaiian Center, Bldg. C, Level 2, Next to Island Vintage Coffee

[ISLANDVINTAGEWINEBAR.COM](http://ISLANDVINTAGEWINEBAR.COM)



Mahalo Nui Loa Honolulu Magazine readers for honoring us with the

# Gold Hale Aina Award 2019 for BEST THAI FOOD



Lunch 11am - 3pm / Dinner 5-10pm / Happy Hour 3-6pm

## Join us for an Exclusive Wine Event



**JUSTIN**  
Wine Pairing Dinner  
Tues, February 4th  
6:00-8:00 p.m.  
\$120/person all-incl.  
808.664.4039

*Please call us to reserve your spot today. This is a "must" event for all wine-lovers, pairing the exceptional wines from Justin Vineyards and Noi Thai's award-winning cuisine. Limited seating.*

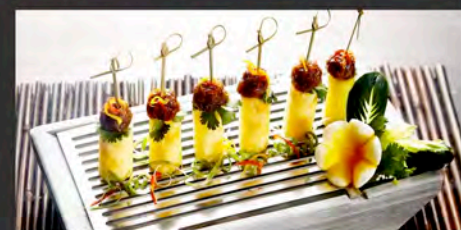
**Make your Valentine's Day reservations early!**



Noi Thai Cuisine is a multiple award-winning restaurant serving the best Thai cuisine in a beautiful setting, complemented by warm, hospital service. Join us for lunch or dinner, and one of the best happy hours in Waikiki!

Need a private room? We have two beautifully appointed rooms that can accommodate 8-12 people, and Noi Thai is also available for larger parties, up to a buyout for 200!

And we do catering, too!



Noi Thai Cuisine • Royal Hawaiian Center • Bldg C, Level 3 • 808.664.4039 • [noithaicuisine.com](http://noithaicuisine.com)

FREE 2 HOURS VALIDATED PARKING AT ROYAL HAWAIIAN CENTER



Walt Keale  
& Friends  
Plaza, February 16, 5-6pm

# ENTERTAINMENT & ACTIVITIES

FEBRUARY 2020



WAIKIKI  
BEACH WALK

## FREE Ukulele Lessons

Daily, 10:30am & 4:30pm

Presented by The Ukulele Store. Information, Sign-up & Lessons:  
2nd floor, Suite 218 or call 888-5469

## Quilting Class

10:30am-12:30pm – Tuesdays

Presented by Hawaiian Quilt Collection.  
Sign-up & Class: 2nd floor, Suite 221. Phone: 924-9889

## FREE Ku Ha'aheo: Hawaiian Music & Hula

Plaza Stage, 4:30-6pm – Tuesdays

## Hoopdance Fitness

Plaza, 5pm – Saturdays\*

Contact Sirkka Aho to sign up: [www.facebook.com/twirlinghoopgirls](http://www.facebook.com/twirlinghoopgirls)  
or call 349-5936. \*Weather/other events permitting.

## Beach Walk Market

Plaza, 4-8pm

Presented Sundays, Wednesdays & Thursdays\*

Featuring grown, made or manufactured products of Hawaii.  
\*Weather/other events permitting.

## Ka Lei Hula: The Art of Hawaiian Dance

Plaza, Fridays, 4-5pm

Class Registration: (808) 664-0102

## Mele Hali'a: "To Recall Fondly" the Brilliant Music of Hawai'i

Free Sunday Concert – Plaza Stage, 5-6pm

February 16: Walt Keale & Friends

*Dates, times, performances and activities are subject to change without notice – weather permitting.*



# Lunch, Shop & Park at Waikiki Beach Walk®

**ENJOY COMPLIMENTARY PARKING ON US!**  
VALID DAILY, BETWEEN 10AM-3PM\*

Stop by participating shops  
or restaurants to receive  
a **FREE** Complimentary  
Lunch & Shop Parking Card.

*\*Present your parking card to the valet with any  
same-day Waikiki Beach Walk® receipt for \$20 or more.  
Limit one card per day, per customer visit, please.*



**P** – PARKING LOCATIONS

Validated valet parking  
located at Embassy Suites  
Porté Cochère or Wyndham  
Vacation Destinations.



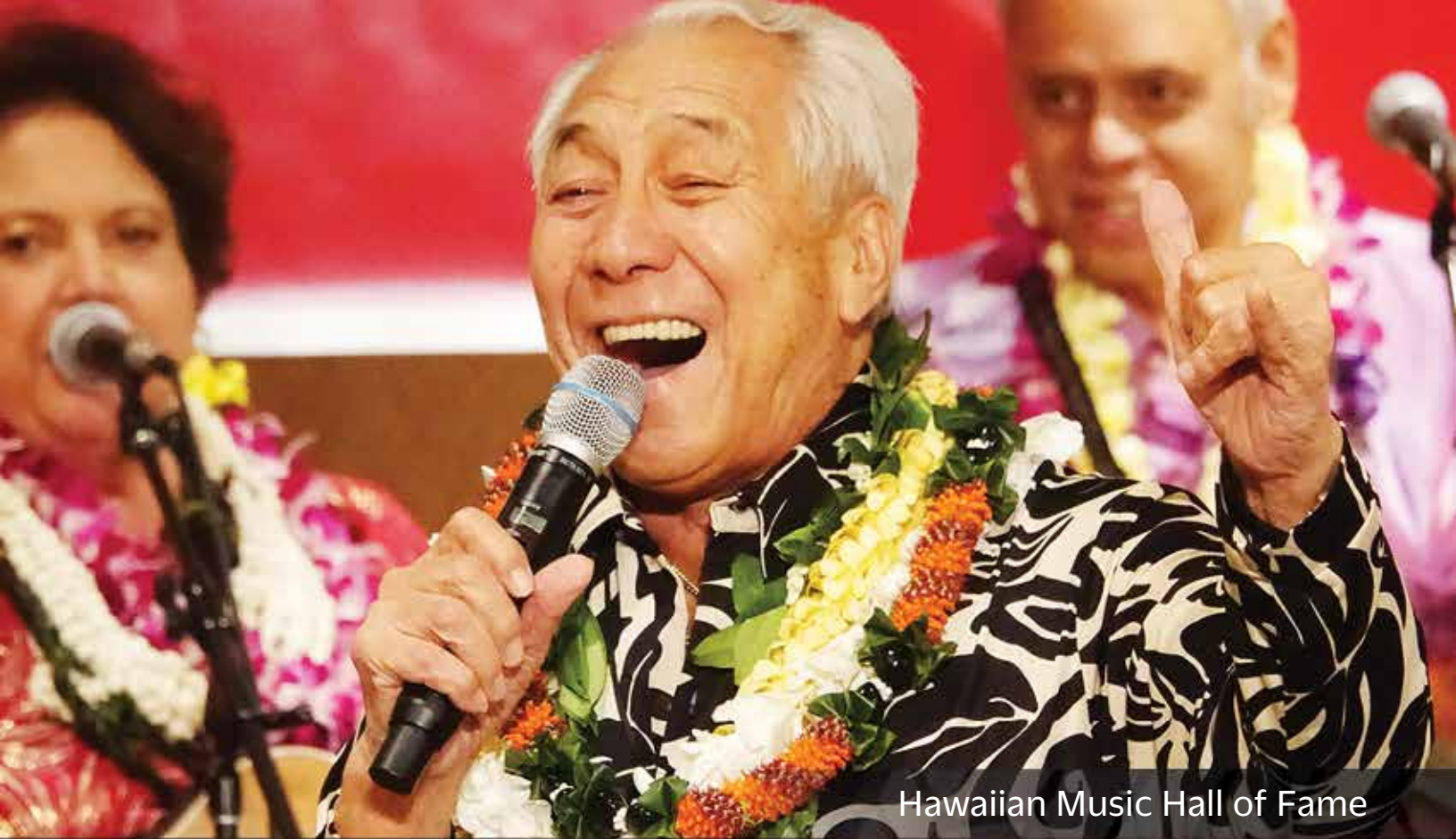
For more parking info scan code or go online to  
[www.waikikibeachwalk.com/parking.htm](http://www.waikikibeachwalk.com/parking.htm)

Located on Lewers Street between Kalakaua Avenue & Kalia Road  
Open 365 Days | 10AM-10PM



WAIKIKI  
BEACH WALK®

WAIKIKIBEACHWALK.COM |   



Hawaiian Music Hall of Fame

# Mele Hali'a

TO "RECALL FONDLY"  
THE BRILLIANT MUSIC OF HAWAI'I

Free Sunday Concert | 5-6pm, Plaza Stage

**FEBRUARY 16**

Walt Keale Band

**MARCH 22**

Hawaiian Music  
Hall of Fame

*Dates, times, performances and activities are subject to change without notice – weather permitting.*

Located on Lewers Street between Kalakaua Avenue & Kalia Road  
Open 365 Days | 10AM-10PM

WAIKIKIBEACHWALK.COM |   



WAIKIKI  
BEACH WALK.



HAWAII PRINCE GOLF CLUB  
ISLAND OF OAHU

*KAMA'ĀINA HOSPITALITY EMPLOYEES SPECIAL*

\$46 TEE TIMES

18 HOLES OF CHAMPIONSHIP GOLF:  
A SWINGING SPECIAL FOR OUR  
HOSPITALITY INDUSTRY PARTNERS.

TEE TIMES (808) 944-4567 | [PRINCEWAIKIKI.COM/GOLF](http://PRINCEWAIKIKI.COM/GOLF)

Valid January 6 – December 24, 2020, any time during weekdays and after 12PM on weekends and holidays. Must present valid Kama'āina hospitality employee ID. Promotion cannot be combined with any other special offer or discount. Some restrictions apply.

# VALENTINE'S DAY

Friday, February 14, 2020

## ISLAND PARADISE FOR TWO +

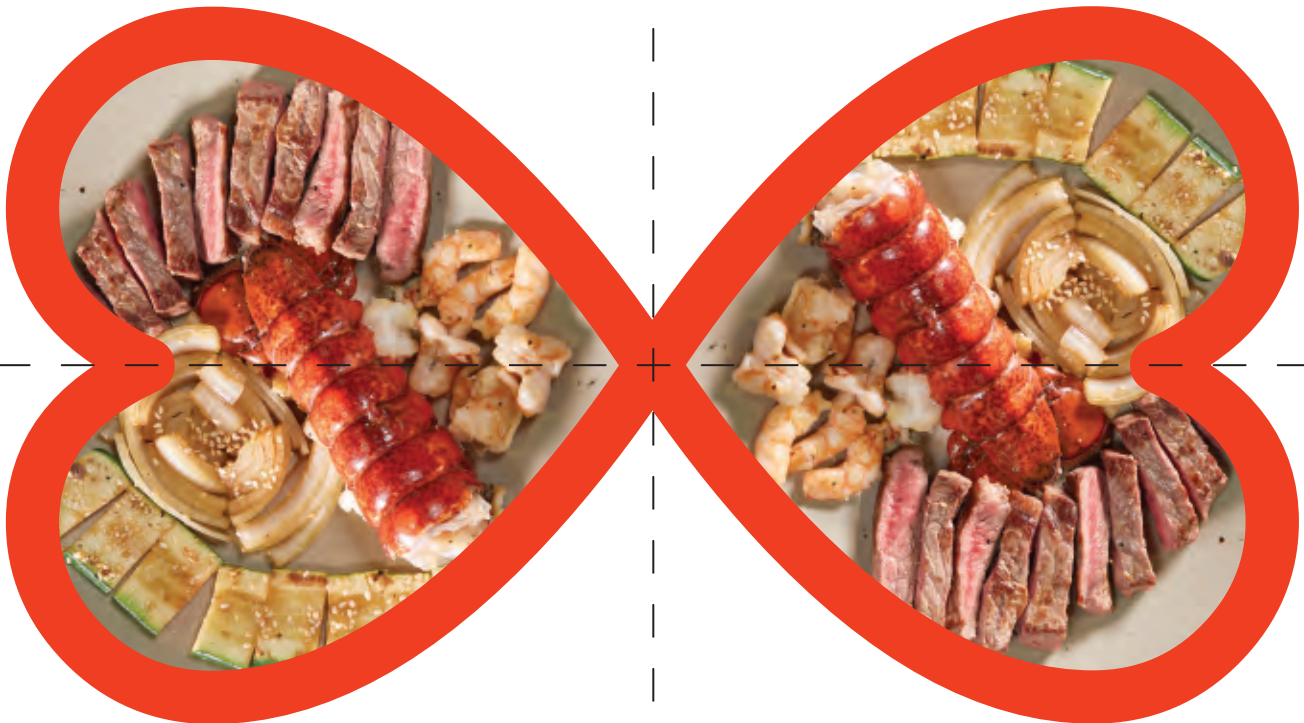
### Special Dessert

**\$105**

*Angus steak and sweet Maine lobster tail served with soup, salad, shrimp appetizer, grilled vegetables, steamed rice, and hot green tea.*

## FRIDAY NIGHT FIREWORKS

Duke Kahanamoku Lagoon and Beach - 7:45PM



**ROCKY** JAPANESE  
STEAK  
TEPPAN RESTAURANT

Hilton Hawaiian Village Waikiki Beach Resort

4 Hr Free Parking | Happy Hr 5-7pm, Daily

[f](#) [@](#) [t](#) #RockyTeppanyaki



# ROYAL HAWAIIAN CENTER UNVEILS NEW 2020 CULTURAL PROGRAMMING



In celebration of Royal Hawaiian Center’s milestone 40th anniversary, commencing February 15, the Center will offer its cultural celebrations every day of the week, with exciting new programs and expanded offerings of existing classes under a new annual theme—Nā Kai ‘Ewalu, translated as “The Eight Seas.”



Since opening our doors in 1980, we have proudly imbued Hawaiian culture into all aspects of the guest experience, and to pay tribute to the roots of our historic site, we are proud to enhance our cultural offerings under the umbrella of Nā Kai ‘Ewalu. Each month will focus on a different feature within this theme, and will weave through our entire calendar of cultural celebrations, musical experiences and hula performances.

You can look forward to new and returning classes within our 2020 cultural programming, including the return of **Papa Mo‘olelo (Storytelling)** with Uncle Joe Recca on **Mondays from 1:30 to 2:30 p.m.** Also enjoy **daily screenings of historic Hawaiian films from 12:30 to 1:30 p.m. in Helumoa Hale.** In response to high demand, we have added more **keiki hula** classes on **Mondays and Fridays from 11:30 a.m. to 12:00 p.m.**

To complement this new programming, we will expand our existing offerings for malihini (visitors) and kama‘āina (locals) to enjoy. The popular **Malu Niu Hawaiian evening entertainment** will feature live hula performances **Tuesdays through Saturdays from 5:00 to 6:00 p.m. in The Royal Grove.** The Malu Niu evening entertainment will include the new “Hula ‘Auana Ma Helumoa” on Friday evenings and “Hula Kahiko Ma Helumoa” on Saturdays, showcasing award-winning hālau hula (hula troupes), their hula traditions, and sacred dances set to traditional instruments like the pahu (drum) and ipu (gourd).

For fans of hands-on activities, Royal Hawaiian Center will continue to offer its existing popular classes throughout the week, including **‘ukulele lessons, Hawaiian quilting, lauhala weaving, adult hula classes, and lei making.** For a complete schedule and more information, visit **RoyalHawaiianCenter.com.**



## WELCOMING NEW MERCHANTS TO OUR 'OHANA



New specialty boutiques are popping up at Royal Hawaiian Center all year long! We recently announced the upcoming arrival of **Gillia**, **Kira x Miffy**, and **House of Mana Up**, three new and exciting additions to our merchant 'ohana.



**Kira x Miffy** offers an array of kids' clothing made from garment-dyed organic cotton fabric with hand-drawn illustrations. The boutique showcases exclusive Hawai'i designs featuring Miffy, the popular character created by Dutch illustrator and author Dick Bruna. Kira Kids has collaborated with Miffy for several seasonal collections, taking inspiration from the classic bedtime stories and combining them with unique style and colors. Guests will also find a selection of soft toys, accessories, adult t-shirts and home goods. Kira x Miffy is also located in **Building B, Level 1**.



Inspired by its successful online store of local goods and products by Hawai'i's most innovative entrepreneurs, **Mana Up Hawai'i** has collaborated with Kamehameha Schools' Community Engagement and Resources Group, Kona O'ahu Region and YWCA 'Oahu to open **House of Mana Up**, a special collection at the Center. Featuring dozens of local brands with unique products, House of Mana Up will curate a rotation of brands to provide guests with a new experience each time they shop. Gift-worthy items will include health and beauty, food and beverage, art and fashion, and specially designed gift sets. House of Mana Up is located in **Building A, Level 1**.

Find vintage-inspired resort wear at **Gillia**, where you can shop its feminine beach lifestyle dresses and cover-ups in addition to its collection of modern swimwear. Local designer Saori Santos first launched Gillia in 2011 as an online store, and we are excited to welcome the boutique to its new location in **Building B, Level 1**.



# CELEBRATING A NEW YEAR & A NEW DECADE OF ROYAL HAWAIIAN CENTER



Visit our website to share your historic photos of our past 40 years.



ROYAL HAWAIIAN CENTER

## WAIKĪKĪ PARKING

Enjoy 2 **FREE** hours of parking while you shop & dine with us. Then only \$2 per hour for the 3rd & 4th hours.

*Minimum \$10 purchase required for validation.*

[LEARN MORE](#)



Spend \$500 to choose your own winning lucky lai see envelope filled with big surprises for the perfect way to kick off the new year!

CELEBRATE  
**Lunar New Year**  
JANUARY 16-FEBRUARY 9



# HAWAIIAN CULTURE ON DISPLAY AT ROYAL HAWAIIAN CENTER



LĀ PULE SUNDAY	PŌ 'AKAHI MONDAY	PŌ 'ALUA TUESDAY	PŌ 'AKOLU WEDNESDAY	PŌ 'AHĀ THURSDAY	PŌ 'ALIMA FRIDAY	PŌ 'AONO SATURDAY
	<b>LOCAL INFORMATION</b> <b>C2:</b> Bldg. C, 2nd floor <b>FC:</b> Bldg. B, 2nd floor <b>G1:</b> The Grove Stage <b>HH:</b> Helumoa Hale  For more information, call Helumoa Hale Guest Services, 808.922.2299	<b>NEW CULTURE SCHEDULE BEGINS FEBRUARY 15</b>				<b>FEBRUARY 1</b> <b>1PM:</b> Lei Making, C2 <b>5PM:</b> Hula Kahiko: Halau Hula Ka No'eau, G1
	<b>FEBRUARY 3</b> <b>10AM:</b> Hula, G1 <b>1PM:</b> Lei Making, C2 <b>3:30PM:</b> Keiki Hula, G1	<b>FEBRUARY 4</b> <b>9:30AM:</b> Quilting, FC <b>10AM:</b> Hula, G1 <b>12PM:</b> 'Ukulele, HH <b>1PM:</b> Lauhala, C2 <b>5PM:</b> Kapono Lopes, G1	<b>FEBRUARY 5</b> <b>12PM:</b> Ho'okani Pila, HH <b>1PM:</b> Lauhala, C2 <b>3:30PM:</b> Hula, G1 <b>5PM:</b> George Kuo, G1	<b>FEBRUARY 6</b> <b>12PM:</b> 'Ukulele, HH <b>1PM:</b> Lauhala, C2 <b>5PM:</b> Ching Ohana, G1	<b>FEBRUARY 7</b> <b>10AM:</b> Hula, G1 <b>12PM:</b> 'Ukulele, HH <b>1PM:</b> Lei Making, C2 <b>5PM:</b> Hula Auana: Hula Halau O Kamuela, G1	<b>FEBRUARY 8</b> <b>1PM:</b> Lei Making, C2 <b>5PM:</b> Lunar New Year Lion Dance, G1
	<b>FEBRUARY 10</b> <b>10AM:</b> Hula, G1 <b>1PM:</b> Lei Making, C2 <b>3:30PM:</b> Keiki Hula, G1	<b>FEBRUARY 11</b> <b>9:30AM:</b> Quilting, FC <b>10AM:</b> Hula, G1 <b>12PM:</b> 'Ukulele, HH <b>1PM:</b> Lauhala, C2 <b>5PM:</b> Kawika Trask, G1	<b>FEBRUARY 12</b> <b>12PM:</b> Ho'okani Pila, HH <b>1PM:</b> Lauhala, C2 <b>3:30PM:</b> Hula, G1 <b>5PM:</b> Malu, G1	<b>FEBRUARY 13</b> <b>12PM:</b> 'Ukulele, HH <b>1PM:</b> Lauhala, C2 <b>6:30PM:</b> Pu'uhonua, G1	<b>FEBRUARY 14</b> <b>10AM:</b> Hula, G1 <b>12PM:</b> 'Ukulele, HH <b>1PM:</b> Lei Making, C2 <b>5PM:</b> Hula Auana: Hula Halau O Kamuela, G1	<b>FEBRUARY 15</b> <b>12:30PM:</b> Movie, HH <b>5PM:</b> Hula Kahiko: Halau Hula Ka No'eau, G1  <b>NEW CULTURE SCHEDULE BEGINS</b>
<b>FEBRUARY 16</b> <b>12:30PM:</b> Movie, HH	<b>FEBRUARY 17</b> <b>10AM:</b> Hula, G1 <b>11:30PM:</b> Keiki Hula, G1 <b>12:30PM:</b> Movie, HH <b>1:30PM:</b> Storytelling, HH	<b>FEBRUARY 18</b> <b>9:30AM:</b> Quilting, FC <b>10:30AM:</b> 'Ukulele, HH <b>12:30PM:</b> Movie, HH <b>1:30PM:</b> Lauhala, C2 <b>5PM:</b> Kawika Trask, G1	<b>FEBRUARY 19</b> <b>10AM:</b> Hula, G1 <b>11:30AM:</b> Ho'okani Pila, HH <b>12:30PM:</b> Movie, HH <b>1:30PM:</b> Lei Making, C2 <b>5PM:</b> Malu, G1	<b>FEBRUARY 20</b> <b>10:30AM:</b> 'Ukulele, HH <b>12:30PM:</b> Movie, HH <b>1:30PM:</b> Lauhala, C2 <b>6:30PM:</b> Pu'uhonua, G1	<b>FEBRUARY 21</b> <b>10AM:</b> Hula, G1 <b>11:30AM:</b> Keiki Hula, G1 <b>12:30PM:</b> Movie, HH <b>1:30PM:</b> Lei Making, C2 <b>5PM:</b> Hula Auana: Hula Halau O Kamuela, G1	<b>FEBRUARY 22</b> <b>12:30PM:</b> Movie, HH <b>3PM:</b> Halau I O Kahala <b>5PM:</b> Hula Kahiko: Halau Hula Ka No'eau, G1
<b>FEBRUARY 23</b> <b>12:30PM:</b> Movie, HH	<b>FEBRUARY 24</b> <b>10AM:</b> Hula, G1 <b>11:30PM:</b> Keiki Hula, G1 <b>12:30PM:</b> Movie, HH <b>1:30PM:</b> Storytelling, HH	<b>FEBRUARY 25</b> <b>9:30AM:</b> Quilting, FC <b>10:30AM:</b> 'Ukulele, HH <b>12:30PM:</b> Movie, HH <b>1:30PM:</b> Lauhala, C2 <b>5PM:</b> Kawika Trask, G1	<b>FEBRUARY 26</b> <b>10AM:</b> Hula, G1 <b>11:30AM:</b> Ho'okani Pila, HH <b>12:30PM:</b> Movie, HH <b>1:30PM:</b> Lei Making, C2 <b>5PM:</b> Malu, G1	<b>FEBRUARY 27</b> <b>10:30AM:</b> 'Ukulele, HH <b>12:30PM:</b> Movie, HH <b>1:30PM:</b> Lauhala, C2 <b>6:30PM:</b> Pu'uhonua, G1	<b>JANUARY 28</b> <b>10AM:</b> Hula, G1 <b>11:30AM:</b> Keiki Hula, G1 <b>12:30PM:</b> Movie, HH <b>1:30PM:</b> Lei Making, C2 <b>5PM:</b> Hula Auana: Hula Halau O Kamuela, G1	<b>JANUARY 29</b> <b>12:30PM:</b> Movie, HH <b>5PM:</b> Hula Kahiko: Halau Hula Ka No'eau, G1

The Royal Grove is an open air venue subject to inclement weather. All activities, events and performances are subject to change without notice. Contact Helumoa Hale Guest Services at 808.922.2299 for the latest information. Standard parking rates apply.

# TANAKA OF TOKYO

## JAPANESE STEAK & SEAFOOD

### West

Ala Moana Center,  
Upper Level 4, Ho'okipa Terrace  
1450 Ala Moana Blvd.

Lunch 11AM-2PM  
Dinner from 5:00PM  
TEL 945-3443



### Central

Waikiki Shopping Plaza, 3F  
2250 Kalakaua Ave.

Dinner from 5:00PM  
TEL 922-4702



### East

Ohana Waikiki East Hotel, 1F  
150 Kaiulani Ave.

Dinner from 5:00PM  
TEL 922-4233



*We serve Certified Angus Beef Sirloin and the highest quality Seafood, with impeccable and friendly service, in an atmosphere of excitement, laughter, and warmth.*

*At Tanaka of Tokyo, diners are always "Honored Guests"....*

"Hawaii's Best Japanese Teppanyaki Steakhouse"  
- Honolulu Star Advertiser -

"Best Japanese Restaurant in Hawaii"  
- Honolulu Magazine -

"The Best Teppan Room Anywhere"  
- Zagat Guide -

"The Best Kids Menu in America Contest Winner"  
- Restaurant Hospitality Magazine -

"One of the 10 Best Japanese Restaurants in the U.S."  
- Five Star Diamond Award -



鉄板焼き・ステーキ&シーフード  
**田中オブ東京**



[www.tanakaoftokyo.com](http://www.tanakaoftokyo.com)

W  
W O L F G A N G ' S  
S T E A K H O U S E  
BY WOLFGANG ZWIENER

*Happy Valentine's Day!*

February 14 & 15 • 11:00am - 11:30pm

February 16 • 11:00am - 10:30pm

**CHAMPAGNE TOAST**

**SALAD**

Wolfgang's Salad for 2

**ENTREE**

Porterhouse Steak for 2

*Our signature USDA Prime Porterhouse Steak,  
Dry-Aged In-house 28 Days and Prepared to Perfection*

**SIDES**

Mashed Potatoes & Creamed Spinach

**DESSERT SAMPLER**

Junior's Cheesecake & Chocolate Mousse Pie

\$165 per couple

REGULAR MENU ALSO AVAILABLE.

LUNCH • HAPPY HOUR • DINNER • WEEKEND BRUNCH • PRIVATE EVENT ROOMS  
Royal Hawaiian Center, Building C, Level 3 • 2 Hours Free Validated Parking • [www.wolfgangssteakhouse.net](http://www.wolfgangssteakhouse.net)

**808.922.3600**



## Celebrate Valentine's Day at SKY Waikiki!

*A la carte specials will be available only on February 14th*



### **Seafood Platter for two \$50**

*Cocktail shrimp, snow crab leg, Kushi oysters, and merus-cut king crab leg served with rocoto cocktail sauce*



### **Passion Punch \$9**

*Don Q rum, Salers Aperitif, pineapple, black cherry, and lilikoi*

# Valentine's Day

Friday, February 14



## French Kiss

Broker's Gin, Aperol Aperitivo, lemon juice, lime juice, Jean Louis Sparkling, house-made mint syrup, strawberry



## Sunset Love

Angeline Pinot Noir, Rothman & Winter Cream de Violette, Art in the Age Ginger Snap, pineapple juice, orange juice, cranberry juice, jalapeño tincture, lemon and lime wedge



# Top of Waikiki

Revolving Restaurant

Indulge in a \$95 four-course prix fixe and \$15 cocktail specials for Valentine's Day at Top of Waikiki.

Plus, receive a complimentary champagne special when you book between 9:30-10pm.



## Goat Cheese Panna Cotta

Goat cheese panna cotta with sun-dried tomatoes, fried prosciutto, HO Farms tomatoes, and croutons, finished with a balsamic reduction



## Pan-Seared Kona Kanpachi

Pan-seared Kona Kanpachi with a lemon caper beurre blanc, topped with a shaved fennel and HO Farms tomato salad



## Red Wine-Braised Short Rib

Red wine-braised short rib over parmesan risotto, topped with a cherry balsamic agrodolce



## Dark Chocolate & Raspberry Opera Cake

Dark chocolate and raspberry opera cake with pretzel granola and raspberry coulis





New Parking Rate:

# \$7 WEEKDAY FLAT RATE

Monday through Friday  
6:30AM - 1:30PM

**WEEKDAY FLAT RATE:**

Available in Waikiki Shopping Plaza only.

**WEEKDAY EVENING FLAT RATE:**

Available in Waikiki Shopping Plaza & Waikiki Business Plaza.  
\$7 flat rate: Daily 5PM - Midnight

**WEEKEND FLAT RATE:**

Available in Waikiki Shopping Plaza & Waikiki Business Plaza.  
\$10 flat rate: Saturday & Sunday 6:30AM - Midnight

\$3.00 per half hour before and after flat rate, no validations can be applied.  
No overnight parking. Cars left in the lot after closing are subject to tow.

*the*  
**Waikiki**  
SHOPPING PLAZA

Located in the heart of Waikiki

since 2004



**HARRIS**  
AGENCY

CREATIVE SERVICES | DIGITAL OPTIMIZATION | MARKETING SUPPORT | PUBLICITY & COMMUNICATION

[www.harris-agency.com](http://www.harris-agency.com)



Contact Gavin Simon at  
[gavins@harris-agency.com](mailto:gavins@harris-agency.com) -or- (808) 946-6116

2250 Kalakaua Ave, Honolulu, HI 96815

HARRIS GROUP

**fg**

FOOD GURUS  
HAWAII

A FULL-SERVICE FOOD & BEV  
MARKETING AGENCY

**digi-VORTEX**

hawaii's digital agency

## AZURE RESTAURANT ROLLS OUT THE RED CARPET FOR VALENTINE'S



At The Royal Hawaiian, a Luxury Collection Resort, Azure Restaurant, the culinary landmark at the Pink Palace of the Pacific, Chef Shingo Katsura and his team present a four-course Valentine's menu that couples will savor.

Seating times begin at 5:30 p.m. with last seating at 8:45 p.m. The cost is \$175 per person (not including tax and gratuity) for the following menu:

### FIRST

Ahi Tartare

Citrus, Avocado Mousse, Wonton Chips, Cilantro

### SECOND

Onaga

Prosciutto Chutney, Asparagus, Trout Roe, Fine Herbs

### THIRD

Filet Mignon

Potato Mille-Feuille, Textures of Beets, Creamed Kale, Bordelaise, Pickled Shallot

### FOURTH

Brioche Bread Pudding

Spiced Caramel, Apples, Vanilla Gelato

Reservations can be made by calling the restaurant at 808-931-7440.

Complimentary four-hour valet and self-parking available to diners.



## WHAT'S HAPPENING AT HYATT REGENCY WAIKIKI BEACH RESORT & SPA AND PUALEILANI ATRIUM SHOPS

Valentine's Week at Hyatt Regency Waikiki Beach Resort & Spa: Celebrate the holiday of love with a little bit of pampering and a whole lot of rest and relaxation, romantic dinner for two and shopping!

**Nā Ho'ōla Spa:** Celebrate Valentine's week at Nā Ho'ōla Spa. Pamper yourself and book a treatment from 2:00 to 4:00 p.m. to receive 20% off for spa happy hour! To make a reservation online, visit [www.nahoolaspawaikiki.com/menu/promotion/#special](http://www.nahoolaspawaikiki.com/menu/promotion/#special). Nā Ho'ōla Spa is located on the 5th floor, take the elevator from the Pualeilani Atrium Shops at ground level.

**The Buffet at Hyatt:** On Valentine's Day, enjoy a special couple's evening at The Buffet at Hyatt. While listening to live music and entertainment, partake in a scrumptious dinner including, prime rib, king crab legs, sashimi, delectable desserts and more! Dinner starts at 4:30 p.m. with last seating at 9:30 p.m. To make a reservation, call (808) 237-6395 or book online through OpenTable. The Buffet at Hyatt is located on the 3rd floor, Diamond Head Tower.

**Pualeilani Atrium Shops:** Drop in and shop on at the Pualeilani Atrium Shops! Take your Valentine on a shopping expedition through our 3-story open-air atrium that has more than 60 shops and restaurants. Let your loved one pick out a gift of choice from locally made jewelry to island apparel. Pualeilani Atrium Shops is located in the Hyatt Regency Waikiki Beach Resort & Spa. For more information, visit [www.pualeilanishops.com](http://www.pualeilanishops.com).

**Dylan's Candy Bar:** The first Dylan's Candy Bar in Hawaii opened its doors at the Pualeilani Atrium Shops at the Hyatt Regency Waikiki Beach Resort & Spa. The moment guests enter Dylan's Candy Bar, it transports you to a modern-day version of Willy Wonka's factory with pop art installations including, oversized lollipop tree, candy cane columns and more! Dylan's Candy Bar houses more than 7,000 edible treats, stationery, toys, and other candy-inspired products. Dylan's Candy Bar is located on the 1st floor, Kalākaua Avenue.



WAIKĪKĪ  
IMPROVEMENT  
ASSOCIATION

---

## *Wikiwiki Wire* **GUIDELINES**

Wikiwiki Wire is published on the first Friday of each month. If you would like to share your news with other members, please send your info to: [editor@waikikiimprovement.com](mailto:editor@waikikiimprovement.com).

### **Submission Deadline**

Waikīkī-related news and information submitted by members (or their PR agencies) for the Wikiwiki Wire newsletter should be received no later than **5 PM THURSDAY, ONE WEEK PRIOR** to the newsletter's publication and distribution on the first Friday of each month.

**News & Stories:** Please submit any Waikīkī-related stories/articles as a Word doc and include photos to accompany stories/ articles. For best results, please upload photos as a separate JPEG attachment - maximum 2 MB each image.

**Flyers/PDFs:** Waikīkī-related flyers are welcome but must look like advertising flyers and not press releases. Please format flyers to an 8.5" x 11" size and submit them in a PDF format.

**Press Releases:** Please submit Waikīkī-related press releases as a Word doc. Press Releases that do not fit within one page of the Wikiwiki Wire newsletter will be returned for editing.

**Photos:** For best results, please upload photos as a separate JPEG attachment - maximum 2 MB each image.



# WAIKĪKĪ IMPROVEMENT ASSOCIATION

We are a cross-section of business, government and the community; our members care about the future of this special place - Waikīkī.

For more than 40 years, the Waikiki Improvement Association has remained true to its objective: to improve, enrich and beautify Waikīkī for the benefit of residents and visitors alike and to promote conditions conducive to the economic and cultural good and for the betterment of the entire community.

## HAWAIIAN DIACRITICAL MARKS

Waikīkī Improvement Association recognizes the use of diacritical marks (i.e., glottal stop (‘), macron (ā) in place names of Hawai‘i, such as Waikīkī and Kalākaua Avenue and will include them whenever possible. We also respect the individual use (or not) of these markings for names of organizations and businesses.

There will also be times when we may not have a chance to add or change the markings in all of the articles submitted and when that happens, e kala mai.