



WAIKĪKĪ IMPROVEMENT ASSOCIATION

Wikiwiki Wire

E-newsletter keeping you up to date on Waikīkī news, features, trends and more!

Volume XII, No. 27-28

July 7—20, 2011

Hilton Hawaiian Village Waikiki Beach Resort completes first phase of the historic makeover of the iconic Rainbow Tower

The Hilton Hawaiian Village Waikiki Beach Resort has completed the first phase of the historic makeover of the iconic Rainbow Tower, and recently held a blessing for the first four floors of the project. The \$45 million project began on Monday, April 11 with the top four floors: 28, 29, 30 and 31. The transformation includes a complete renovation of the tower's interior, including more than 800 guest rooms. The makeover includes all furnishings, carpet, wall coverings, bathrooms, tubs, fixtures, drapery and artwork. The tower's signature suites, the Duke Kahanamoku Suite (left) and the Niunalu Suite on the 30th and 31st floors, respectively, received more than \$1 million in upgrades combined.

Since its opening in 1968, the Rainbow Tower has become a favorite for guests because of its proximity to the beach and Duke Kahanamoku Lagoon. Its oceanfront rooms also provide spectacular views of Waikiki Beach and Diamond Head. It features the world's largest ceramic-tile mosaic spanning 286 feet high by 26 feet wide on each end of the tower. More than 16,000 colorful tiles were used to complete the mosaic. The tower houses the resort's culinary landmark, Bali Steak & Seafood Restaurant, as well as the popular oceanside eatery, Rainbow Lanai.



Inside this issue:

Good news from Hawaiian Airlines	2	New Atlantis Adventures Combo Adds Fun for Kids, Value for Parents	7
Hawai'i Convention Center Receives 13 th Consecutive Prime Site Award	3	Relax and Get Pampered with Outrigger Hotels in Hawaii	8
Legends In Concert to Open Star-Studded Show at Royal Hawaiian Center	4	Hawaiian Airlines Appoints Tom Wessner, Vice President - Strategic Procurement	9
Aloha Aina Boutique Hosts Summer Trunk Show at Royal Hawaiian Center	5	Hawai'i Convention Center Executive Director of Sales & Mktg Elected to Board of NY Society of Assn. Executives	9
OHANA Hotels & Resorts Lets Families Stay and Play Together	6	David Nagaishi Named General Manager of Il Lupino Trattoria & Wine Bar	10

... and MORE

Good news from Hawaiian

Hawaiian Increases Capacity on Tokyo Route

Starting July 7, Hawaiian Airlines will begin using its newest and largest aircraft, the Airbus A330-200, to operate its daily, nonstop flights between Honolulu and Tokyo's Haneda Airport.

"The return of healthy demand for our Tokyo service is allowing us to proceed with our plan to operate our largest aircraft on the route," said Mark Dunkerley, Hawaiian's president and CEO. "After the drop in travel following the earthquake and tsunami, we are encouraged by the way the market has bounced back. We want to welcome more visitors to Hawaii from Japan and encourage more of our customers from Hawaii and the mainland U.S. to visit Japan."

Hawaiian's transition from its 264-seat, wide-body, twin-aisle Boeing B767-300 aircraft to the 294-seat, wide body, twin-aisle A330 aircraft will add nearly 11,000 seats annually to Honolulu from Tokyo, while also offering customers new features and amenities to make travel more enjoyable. Coach Class customers will enjoy the A330's comfortable new interior, increased legroom, and the state-of-the-art, on-demand entertainment system with high-resolution LCD touch-screen monitors in each seatback to select from a wide variety of movies and video programs, audio channels and video games. Each system also includes a USB port allowing connectivity for personal media players. First Class customers also enjoy larger in-seat LCD screens and iPOD compatibility.

Hawaiian's Haneda service is distinguished from other carriers by the authentic presentation of its award-winning "Hawaii Starts Here" inflight program celebrating the culture, people, and natural beauty of the Hawaiian Islands, while also offering new pan-Asian cuisine, Japanese entertainment options, and special onboard products.

Hawaiian is the only U.S. carrier connecting Hawaii and Haneda Airport, which is centrally located in Tokyo and offers superior accessibility to Japan's largest metropolitan area compared to Narita International Airport, which is located 40 miles away.

Hawaiian's Flight #457 departs Honolulu International Airport daily at 6:55 p.m. and arrives at Tokyo's Haneda Airport at 10:05 p.m. the following day. Return Flight #458 departs Haneda daily at 11:55 p.m. and arrives in Honolulu at 12:35 p.m. the same day. (Tokyo is 19 hours ahead of Honolulu and the flight crosses the International Dateline.)

Hawaiian Airlines Expands Interisland Fleet *Refinances To Lower Costs*

Hawaiian Airlines today announced that it has leased three additional Boeing 717-200 aircraft in response to increasing consumer demand.

With these aircraft joining the fleet, Hawaiian will be able to expand its interisland service between Honolulu and Kahului, Lihue, Hilo, and Kona during peak travel periods, and further improve its industry-leading operational reliability.

Along with acquiring the three additional aircraft, Hawaiian announced that it has purchased its existing fleet of 15 leased Boeing 717-200 aircraft in a refinancing transaction that reduces its fleet costs over the long term.

"With our increasing service to Hawaii from Asia, demand for our interisland flights during peak hours of the day and during popular travel periods has never been higher. Adding these aircraft will give us the ability to serve more customers during these periods," said Mark Dunkerley, Hawaiian's president and chief executive officer. "At the same time, we are restructuring the ownership of our existing fleet to reduce our aircraft costs. With other costs rising quickly, this will help us keep fares affordable."



Continued on next page

Continued from previous page

Hawaiian expects to take delivery of the three additional aircraft in September, October and November.

Starting in October, Hawaiian will add approximately 20 flights per day between Honolulu and its other airports in Hawaii. The company expects to hire an additional 40-50 pilots, flight attendants and ground staff to support the increased flight operations.

Hawaiian has purchased the aircraft it previously operated under long term leases from Boeing Capital Corporation (BCC) with financing provided by BCC and entered into multi-year leases with BCC for the three additional 717s. Terms of the transactions were not released.

“The 717 has proven itself as an able partner to Hawaiian’s interisland mission. Hawaiian’s decision to expand its fleet and move from operator to owner is a further vote for the world’s best 100-seat airliner by an experienced and valued customer,” said Jordan Weltman, Boeing Capital vice president for the Americas region.

The Boeing 717-200 is the world’s best 100-passenger jetliner designed specifically for short-haul, high frequency operations. The twinjet features an advanced cockpit and avionics comparable to a Boeing 777, as well as a “big airplane” passenger feel with wide, five-abreast seating and large overhead storage bins. It is the quietest 100-seat airplane now operating, and among the most reliable with a fleet-wide average 99.4 percent reliability.

Hawaiian’s 717s seat up to 123 passengers – eight in First Class and 115 in Coach.

Hawai‘i Convention Center Receives 13th Consecutive Prime Site Award

The Hawai‘i Convention Center has received its 13th consecutive Prime Site Award from Facilities & Destinations magazine and is one of 29 convention center facilities managed by SMG nationally to win the award this year.

Prime Site Awards are decided by meetings and conventions industry leaders directly involved with site selection, including promoters, booking agents and event planners. Voting is based on convenience of location, facility attractiveness and maintenance, professionalism of staff, cuisine, and technological capabilities.

“As Hawai‘i prepares to host the Asia-Pacific Economic Cooperation (APEC) 2011 Leaders’ Meeting in November, we are pleased to receive this continued recognition of the Center as a top choice for participants from around the world,” said Joe Davis, SMG general manager of the Hawai‘i Convention Center. “This award also highlights the hard work of our staff and destination partners, and we congratulate the other SMG-managed convention facilities that won this year.”

Facilities & Destinations magazine, a monthly publication for professional planners of meetings, entertainment and special events, described Hawai‘i as a place that offers an ideal strategic location between east and west, and the Center’s team as “well versed in the nuances of conducting business on an international level.” The magazine highlighted the Center’s various global marketing tools and effortless information sharing and application process for international attendees.

The Hawai‘i Convention Center continues to strengthen its international outreach program, drawing thousands of participants from countries throughout the world at its largest meetings and tapping into growing interest from Korea, China and other areas in the Pacific Rim.

SMG markets and manages the Hawai‘i Convention Center under the direction and support of the Hawai‘i Tourism Authority (HTA), the state’s tourism agency. The Hawai‘i Tourism Authority was created in 1998 to ensure a successful visitor industry well into the future. Its mission is to strategically manage Hawai‘i tourism in a sustainable manner consistent with the state of Hawai‘i’s economic goals, cultural values, preservation of natural resources, community desires and visitor industry needs.

Legends In Concert to Open Star-Studded Show at Royal Hawaiian Center

Partnership to Include Oahu's Tourism Leader Star of Honolulu Cruises & Events

The celebrated tribute artist production Legends in Concert® will debut a star-studded show December 8 at Royal Hawaiian Center in Waikiki, marking the start of a long term, multi-year agreement as the resident attraction in the Center's fourth floor theater.

"We are thrilled to welcome this production to our world-class theater located in Waikiki's premier shopping, dining and entertainment destination," said Rosalind Schurgin, CEO of The Festival Companies, which manages Royal Hawaiian Center. "The superstars featured in this glamorous production have international appeal and will be equally popular with Hawaii's residents and global visitors."

The fast-paced, hour-plus long musical production showcases the talents of tribute artists portraying the likeness and performances of the world's most legendary superstars. With the Hawaii initial lineup soon to be finalized and announced, the all-new Waikiki production will feature a selection of talented performers paying tribute to the likes of perennial favorites Elvis Presley and Michael Jackson, joined by contemporary and classic characters including Lady Gaga, Elton John, Britney Spears, Rod Stewart, Madonna and Prince, enhanced by a rockin' live band and dancers. In all, Legends in Concert features over 80 different superstar personas that are rotated through its eight different domestic and international venues.

"We are excited to be part of the Royal Hawaiian Center and to perform in such an exceptional venue as the Royal Hawaiian Theater," said Brian Brigner, chief operating officer for Legends in Concert. "We are confident of bringing to Waikiki a new level of cosmopolitan and entertaining nightlife that enjoys a track record of close to three decades of success."

On Stage Entertainment of Las Vegas owns and operates Legends in Concert. The company is partnering in the Waikiki show and operation of the theater with long-time Hawaii cruise and transportation operator Star of Honolulu Cruises & Events.

"They're an excellent organization with an impeccable 50-plus year reputation and we're delighted to have them as part of our team," said Brigner. "Star is an investment partner that brings not only capital to the table, but also many valuable local connections and a wealth of experience in growing a successful business in Hawaii."

Star of Honolulu and Royal Star Hawaii Tours & Destination Services are locally owned and have provided high-quality diversified tourism services to millions of island visitors since 1957.

"We look forward to playing a key role in the show and theater's success," said Ron Howard, president of Star of Honolulu. "Waikiki needs new and exciting things for visitors and kamaaina to do after dark. Legends in Concert produces a world-class show and the Royal Hawaiian Theater is the perfect venue for a very memorable event."

Legends in Concert will be open year-round with cocktail show performances six nights a week and pre-show dinner packages available through wholesalers, restaurateurs and for special events. The 700-seat theater, which was extensively renovated in 2008, is currently undergoing further modifications in preparation for the December opening date.

"We are investing several million dollars in bringing the show to Waikiki in terms of staging and renovating the theater to our specifications," said Brigner. "In addition, the production will begin hiring more than 70 staff in the coming months as it ramps up towards the opening. With over 15,000 square feet of activities for our patrons to enjoy in this fantastic new location, it will be staffed to deliver an excellent customer experience every day," he said.

The show and other planned activities in the theater are expected to positively impact other tenants of Royal Hawaiian Center through all of the added guests it will attract to the property and nearby community.

Legends in Concert first burst onto the Las Vegas stage nearly 30 years ago, and continues to play to full houses nightly in Las Vegas, and at multiple live venues around the country and on international cruise ships. With an

Continued on next page

Continued from previous page

always evolving cast of legendary superstars, original choreography and elaborate theatrical sets, Legends in Concert is the original and largest tribute show in the world.

Since its debut at the Imperial Palace on May 5, 1983, the show has earned numerous entertainment industry awards, including "Show of the Year," "Entertainers of the Year," "Grand Slam," and the prestigious "Show of Shows" awarded by the International Press Association.

Ticket information, show prices and additional details about the production and the Royal Hawaiian Theater renaissance will be released in the coming weeks.

Aloha Aina Boutique Hosts Summer Trunk Show at Royal Hawaiian Center

DETAILS: Join us on Friday, July 8 as Aloha Aina Boutique hosts its first trunk show at Royal Hawaiian Center. The event will showcase the 2011 summer collections from Noelani Designs and Tiare Hawaii. "We invite everyone to attend this fun afternoon of fashion," said Seyon Chan, owner of Aloha Aina Boutique. "We are thrilled to feature hot summer trends in apparel and accessories by our featured designers."

Guests will have the opportunity to meet the designers, and enjoy champagne and hors d'oeuvres. Customers will receive 10% off featured merchandise with a chance to win a handmade Tiare Hawaii Jasmine dress or made-in-Hawaii earrings from Noelani Designs.

A modern reflection of Hawaii, Aloha Aina Boutique specializes in contemporary casual clothing and accessories from an array of local independent designers. For more information, please call (808) 924-4333.

WHEN: Friday, July 8
1:00 – 7:00 p.m.

WHERE: Royal Hawaiian Center
Building C, Level 2

PARKING: Royal Hawaiian Center has the largest garage in the heart of Waikiki with 10 levels of parking and more than 600 stalls.

The parking garage entrance is located up the ramp on the right side of Royal Hawaiian Avenue. The Center's validated parking promotion offers first hour free parking with \$1 per hour after that for up to 4 hours (\$3 for 4 hours). Standard parking rates apply thereafter, at \$6 per hour. Special event \$5 parking validation is available at Lei Ohu Guest Services. No minimum purchase is required for validation.

For more information, visit www.RoyalHawaiianCenter.com, or call Lei Ohu Guest Services at (808) 922-2299.



OHANA Hotels & Resorts Lets Families Stay and Play Together

Families and groups on an O'ahu getaway can enjoy great rates starting at \$125

[OHANA Hotels & Resorts](#) is making family time fun again, with special rates on more spacious accommodations. Starting at just \$125 a night, families and groups staying at the [OHANA Waikiki Malia](#) can transform their one-bedroom kitchenette into a home away from home. And for larger groups, the [OHANA Waikiki West's](#) two-room connecting kitchenettes allow space to sprawl with space for up to six, with rates starting at \$179 a night.

“At OHANA Waikiki Malia and OHANA Waikiki West, having a great time at a great value is one of our top priorities,” said Tom Wakita, corporate director of sales for OHANA Hotels & Resorts. “Whether staying with OHANA while on business or for pleasure, our properties offer island-style hospitality with some of the most convenient locations in the heart of Waikiki.”

Families staying with OHANA will also appreciate OHANA's Waikiki Connection, which makes traveling throughout Waikiki a breeze with complimentary rides on the open-air Waikiki Trolley's Pink Line. In addition to complimentary trolley rides, Waikiki Connection offers extra value at all of [OHANA Hotels & Resorts'](#) Waikiki properties, with complimentary services and discounts including:

- Free Internet access in all guest rooms - including free wi-fi in the lobby and most common areas
- Free local phone calls and free phone calls to mainland U.S. and Canada (for the first 15 minutes)
- Free use of the in-room safe
- Free in-room coffee and tea
- Free daily local newspaper at the reception desk
- A free OHANA drawstring beach tote (one per room)
- Free rides aboard the Waikiki Trolley's Pink Line, which takes travelers throughout Waikiki and to Waikiki Beach Walk, plus Ala Moana Center

OHANA Waikiki West, starting at \$179

Travelers can spread out at the [OHANA Waikiki West](#) (right) with flexible accommodations, including guest rooms, suites or kitchen combo rooms that connect a standard and kitchenette room for additional space and privacy.

Kitchenettes are equipped with a two-burner stovetop, refrigerator, cookware and tableware. Additionally, the hotel's location makes it easy for families to grab groceries or snacks right across the street, pick up a morning cup of java at Starbucks or enjoy a meal of finger-licking, family-friendly foods at Chili's Bar & Grill or Nashville Waikiki.

The central location also puts travelers across the street from the iconic International Market Place and a short stroll to Waikiki Beach and shopping.



OHANA Waikiki Malia, starting at \$125

At the [OHANA Waikiki Malia](#) (photo on next page) families will enjoy one-bedroom suites complete with kitchenettes - perfect for preparing a late night snack or light breakfast for the family.

On property, guests can start each morning over a casual breakfast at International House of Pancakes before heading out for a day exploring the island. The OHANA Waikiki Malia is centrally located so that travelers can find shopping at the Duty Free Shoppers (DFS) Galleria and Royal Hawaiian Shopping Center, as well as a variety of eateries and the waves of Waikiki Beach just a short stroll away.

Continued on next page

Continued from previous page

Rates for [OHANA Hotels & Resorts](#) are per room, per night, for single or double occupancy and are available through December 21, 2011.

Rates and specials cannot be combined with other offers and are subject to availability and change. Restrictions may apply. Taxes are not included. Rates may not be used for group bookings without prior authorization from Outrigger.

For reservations and additional information, call your preferred travel professional or contact OHANA Hotels & Resorts toll-free at 1-800-462-6262 or visit www.ohanahotels.com.

E-mail reservations are also available at reservations@ohanahotels.com.



New Atlantis Adventures Combo Adds Fun for Kids, Value for Parents

Atlantis Adventures is offering a new “Family Fun in the Sun Combo” this summer that is making its unique ocean tour experiences more exciting for the kids and ore affordable for parents.

Families booking the Atlantis Submarines tour and Atlantis *Navatek* Cruises’ Sunset Dinner Cruise combo package receive free admission for kids under age 5, with all kids under age 12 being given a special Atlantis activity fun pack that includes a coloring nautical picture frame magnet and Atlantis water bottle (while supplies last). This is in addition to the \$10 per person savings that families receive when booking the combo package.

This one-of-a-kind ocean tour combo lets families share the memories of descending into the midst of Hawai‘i’s spectacular marine world, and also gliding over the ocean’s surface on Hawai‘i’s smoothest cruise vessel.

Atlantis offers the submarine tour and dinner cruise combo daily, but families have the option of reserving them on separate days. In addition, Atlantis offers families with multiisland travel itineraries the flexibility to reserve its submarine tour on Maui or Hawai‘i’s Big Island, and enjoy the sunset dinner cruise on O‘ahu.

Kids under age 5 are also free for family bookings of the Atlantis *Navatek* Cruises’ Sunset Dinner Cruise by itself.

Reservations are required for the Family Fun in the Sun Combo. For more information, please visit www.atlantisadventures.com/hawaii/oahu/family-combo-package.cfm.

Atlantis Submarines - Hawaii's Only Submarine Tour

Atlantis is Hawai‘i’s only submarine tour provider, offering daily tours from Waikiki on O‘ahu. Each island submarine tour experience is unique, but they all showcase the magnificent beauty of Hawai‘i’s marine life.



Featuring a perfect safety record, Atlantis uses the world’s most technologically advanced passenger submarine to carry guests more than 100 feet below the ocean’s surface. They enjoy a spacious, air-conditioned cabin with large viewing portals for an up-close view of Hawai‘i’s undersea world, which is enhanced with an entertaining and educational narration by a tour guide. Per Coast Guard rules, children must meet the height requirement of 36 inches.

Relax and Get Pampered with Outrigger Hotels in Hawai‘i

Spas invite Guests to an Indulging Getaway

[Outrigger Hotels & Resorts](#) invites guests to enhance their beauty, health and well being on their next visit to Hawai‘i by indulging in the soothing pleasures of a spa treatment at one of the day spas available at Outrigger’s hotels and resorts in the islands. Recognized as one of the world’s best spa destinations, Hawai‘i embraces the host culture and traditions through a variety of spa and massage treatments for both men and women. Visitors have seven unique spa experiences to choose from at Outrigger properties across the Hawaiian islands including Waikiki Plantation Spa, Serenity Spa, Spa Pure, and Ville de Coco on O‘ahu.

Waikiki Plantation Spa (Outrigger Waikiki on the Beach, O‘ahu), top photo
Waikiki Plantation Spa is the only penthouse spa in Hawaii and offers serene views of world-famous Waikiki Beach and the Pacific Ocean. Located in the heart of Waikiki on the 16th floor of the [Outrigger Waikiki on the Beach](#), the two-story spa welcomes private parties, from corporate events and birthday celebrations, to bridal parties and special occasions – with a full range of custom services. A personal analysis with a professional skin care specialist will help determine the appropriate treatment to target any problem areas. The friendly and professional staff will pamper patrons with massages, facials, nail services, waxing, hydrotherapy, body wraps and scrubs. Explore the spirituality of well-being and discover a genuine Hawaiian sense of place at the Waikiki Plantation Spa. For more information, call (808) 926-2880, or toll free (866) 926-2880, or visit www.waikikiplantationspa.com



Serenity Spa Hawaii (Outrigger Reef on the Beach, Oahu), lower photo
Explore the local tradition of using marine plant extracts, flower essences, essential oils and minerals for spa treatments at Serenity Spa Hawaii. The spa is located in an area of Waikiki known as “Kawehewehe,” an ancient Hawaiian healing site, home of powerful Kahuna Lā‘au Lapa‘au (traditional healers) in ancient times. Hawaiians have been coming to this particular area for centuries to heal spiritual and physical ailments. In honor of these ancient Hawaiian healers, Serenity Spa Hawaii continues the sacred healing art and treats guests to an exotic cultural experience. Serenity Spa provides guests innovative services and is proud to feature Aveda products that are environmentally sustainable. A selection of Aveda products also can be purchased at the new boutique in the lobby at [Outrigger Reef on the Beach](#). For more information, call (808) 926-2882, or toll free at (866) 926-2882, or visit www.serenityhawaii.com.



Ville de Coco (Outrigger Luana Waikiki, O‘ahu)
Ville de Coco is the perfect luxury salon to spend some “me” time with girlfriends or a little mother-daughter time. Located in the [Outrigger Luana Waikiki](#), Ville de Coco is the place to self-indulge with a great selection of massages, facial treatments, and nail & pedicure services. Awaken your inner goddess, as the aromas of ginger and jasmine alleviate all the tension and the massages escort you to the art of relaxation. The salon’s professional staff will pamper guests with a selection of colorful and creative manicure and pedicure designs that fit any style and mood. For more information, call (808) 941-3732, or visit us at www.villedecoco.com.

Spa Pure (Courtyard by Marriott Waikiki Beach, Oahu)
Spa Pure ensures the ultimate comfort, performing massages that exclusively fit the guests’ needs and interests. Spa Pure is located in the Courtyard by Marriott Waikiki Beach and is the only hotel spa that offers a unique blend of water treatments and techniques. Blending elements of dance, yoga and massage, Spa Pure’s Ocean Massage was developed by owner Dennis Miller and provides, guests a one-of-a-kind experience. Spa Pure offers simple, elegant and pure massages and only uses all-natural botanical oils and products from Ola Hawaii. The traditional, powerful healing massages and fresh, all-natural products enrich the skin and restore muscles. Spa Pure’s touch is the perfect remedy to relieve stresses and rejuvenate. For more information, call (808) 924-3200 or visit us at www.spapurewaikiki.com.

Hawaiian Airlines Appoints Tom Wessner, Vice President – Strategic Procurement

Hawaiian Airlines announced the appointment of Tom Wessner to the new position of vice president – strategic procurement.

Hawaiian created this new position as part of a recent corporate realignment, which identified the development of in-house procurement expertise as essential to reducing costs and improving the company's ability to stay competitive. Wessner is charged with centralizing Hawaiian's procurement activities and streamlining its purchasing processes. He reports to Peter Ingram, Hawaiian's executive vice president and chief financial officer.

"Tom has an extensive professional background in purchasing management combined with strong business analytics that will strengthen our procurement activities and help improve our bottom line results," said Ingram.

Wessner comes to Hawaiian with 24 years of procurement experience in the automotive industry. Before joining Hawaiian, Wessner served as director of purchasing for Tesla Motors, a start-up electrical car company based in Palo Alto, CA. From 2005-2008, he served as deputy general manager for the purchasing division at Mazda Motor Corporation in Hiroshima, Japan. Prior to that, he spent six years with Ford of Mexico in Mexico City, serving in director positions responsible for procurement, communications, and new business development.

Wessner did his undergraduate and post-graduate studies at Pennsylvania State University, earning his Bachelor of Science degree in Industrial and Organizational Psychology in 1982, followed by a Master of Business Administration degree in finance in 1986.



Hawai'i Convention Center Executive Director of Sales & Marketing Elected to Board of NY Society of Assn. Executives

The Hawai'i Convention Center is proud to announce that Neil Mullanaphy, executive director of sales & marketing, was recently elected to serve on the board of the New York Society of Association Executives (NYSAE).

In May, Mullanaphy was elected to a one-year term on the board of NYSAE, which was founded 92 years ago to serve as the "association of associations." NYSAE works to advance and serve the profession of association and not-for-profit management.

"Neil has been invaluable in forming a strong relationship with NYSAE that we hope will continue for many years," said Joe Davis, SMG general manager of the Hawai'i Convention Center. "His work is a testament to the widespread involvement of Hawai'i Convention Center staff throughout the meetings and conventions industry."



In March, the Hawai'i Convention Center and its Hawai'i-based industry partners participated for the second consecutive year in NYSAE's MeetNY client/customer showcase, where qualified executives and planners were invited to attend. The Center's partnership with NYSAE puts Hawai'i in the forefront of the New York metropolitan and tri-state area, which is the third-largest association market in the United States and a key market for Hawai'i as a destination.

SMG markets and manages the Hawai'i Convention Center under the direction and support of the Hawai'i Tourism Authority (HTA), the state's tourism agency.

David Nagaishi Named General Manager of Il Lupino Trattoria & Wine Bar

The consummate industry professional brings his years of experience, talent, and enviable skills to the new Italian eatery at the Royal Hawaiian Center

IL LUPINO TRATTORIA & WINE BAR has named well-known industry veteran David Nagaishi as General Manager, announced Peter Zwiener, Il Lupino Managing Director.

Nagaishi began his duties in May 2011, and is overseeing all food and beverage operations for the Italian restaurant.

"I am very excited to begin this new journey, and am honored to work with Executive Chef Nicola Sayada, once again. He is extremely talented and a great person to work with, side by side," said Nagaishi. "I also really enjoy working in Waikiki, with all of its excitement. I've spent most of my restaurant career here, most recently at the Ocean House for the past 9 years."

In addition to being Operations Manager at Ocean House, Nagaishi's previous positions have been at some of the most notable restaurants in Hawaii, including being General Manager at Don Ho's Island Grill, General Manager at Neiman Marcus Restaurants, Manager at Bali By the Sea, VP General Manager at Nick's Fishmarket, Manager at The Black Orchid, General Manager at Pier 7, and General Manager at Aqua Restaurant at the Hawaiian Regent.

His work philosophy is four-fold: Provide every guest with an exceptional dining experience, where everyone leaves happy; Treat every employee as an equal part of the team; Be a strict, but fair, leader; and, be a good teacher.

"We are very excited and honored to have someone of David's reputation and experience at Il Lupino," said Zwiener. "Il Lupino is our flagship Italian restaurant - and we wanted someone of David's caliber to build its success over the long term. He and Chef Nic make an excellent team!"

Although Nagaishi's schedule allows him little free time these days, when he can, he enjoys spending time with his family, fishing, golfing, kayaking, biking, surfing, and playing the guitar.



Waikīkī Hula Show at the Kūhiō Beach Hula Mound

Authentic Hawaiian music and hula shows by Hawai'i's finest hula *hālau hula* (dance troupes) and Hawaiian performers. Opens with traditional blowing of conch shell.

Tues-Thurs-Sat-Sun, weather-permitting from **6:30-7:30 p.m.** at the Kūhiō Beach Hula Mound, near Duke Kahanamoku statue, beachside at Uluniu & Kalākaua Ave. in Waikīkī.

FREE and open to the public. Outdoors, casual, seating on the grass; beach chairs, mats, etc. okay. Cameras welcome. Presented by the City & County of Honolulu, the Hawai'i Tourism Authority and Waikīkī Improvement Association.

For information, call Marnie Weeks, Producer, Kūhiō Beach Hula Shows, 843-8002.

Week-nights

Every Tuesday – Ainsley Halemanu and Hula Hālau Ka Liko O Ka Palai

Every Thursday – Joan "Aunty Pudgie" Young and Puamelia

Weekends

Sat July 9 – Coline Aiu and Halau Hula O Maiki

Sun July 10 – Jack McKeague and Halau Ka Pa Hula O Ka Lei Hulu Hiwa

Sat July 16 – Joan S. Lindsey and the Joan S. Lindsey Hula Studio

Sun July 17 – Leimomi Ho and Keali'ika'apunihonua Ke'ena A'o Hula



Street activity in / near Waikīkī (courtesy of the City)

July 31, 2011 Sunday
5:20AM Starts
11:00AM Ends

31ST ANNUAL TINMAN TRIATHLON sponsored by Tinman Unlimited. The event is expected to have 1,000 participants. Swim will be at: Queens Beach, Queen Kapi'olani Park. then : Bike will start at Swim/Bike Transition area, to Kalākaua Ave., to Diamond Head Rd., to Kahala Ave., to Kealaolu Ave., to Kalaniana'ole Hwy., to Lunalilo Home Rd., to Hawai'i Kai Dr., to turnaround at Kealahou St., to Hawai'i Kai Dr., to Lunalilo Home Rd., to Wailua St., to Keahole St., to Kalaniana'ole Hwy., to Kilauea Ave., to Elepaio St., to Kahala Ave., to Diamond Head Rd., to Kalākaua Ave., to transition area in Queen Kapi'olani Park, near bandstand Run will start at Kapi'olani Park transition area, to Kalākaua Ave., to Kapahulu Ave., to Paki Ave., to Monsarrat Ave., to 18th Ave., to Kilauea Ave., to Elepaio St., to Kahala Ave., to Diamond Head Rd., to Kalākaua Ave., to end at Honolulu marathon finish line.

Contact: Olga Caldwell 595-5317 Fax: 595-5317,
E-mail: tinmanhawaii@hawaii.rr.com
For more info, visit their website: <http://www.tinmanhawaii.com/>

Hawaiian Diacritical Marks

Waikīkī Improvement Association recognizes the use of diacritical marks (i.e., glottal stop (ʻ), macron (ā) in place names of Hawai'i, such as Waikīkī and Kalākaua Avenue and will include them whenever possible. We also respect the individual use (or not) of these markings for names of organizations and businesses.

There will also be times when we may not have a chance to add or change the markings in all of the articles submitted and when that happens, e kala mai.

The next issue of Waikīkī WikiWiki Wire is scheduled for July 21

NOTICE: House Without A Key lead dancer Kanoe Miller is taking off from July 20-July 30th. Brook Lee will be replacing her during this time.

The former Miss Universe is currently the co-host of the Passport Hawaii TV show on KGMB. She appears with Brian Clay, Hawaii's Olympic Decathlon gold medalist.



WAIKĪKĪ IMPROVEMENT ASSOCIATION

2250 Kalākaua Avenue, Suite 405-2, Honolulu, HI 96815

Waikīkī Wikiwiki Wire is published weekly by Sandi Yara Communications for WIA
If you would like to share your news with other members, please send your info to:
editor@waikikiimprovement.com

Weekly Events & Promotions

July 10-16, 2011



Sunday, 7/10

**HOLIDAY INN WAIKIKI
BEACHCOMBER RESORT:
OUTRIGGER REEF:**

- 9p Jimmy Buffett's: Kailua Bay Buddies (info. 791-1200)
- 9a-1p & 6-9p Kuloko Arts of Hawaii: Guest Artist (info. 922-5110)
- 3-5p Kani Ka Pila Grill: Happy Hour / 6-9p Hoku Zuttermiester (info. 924-4990)
- ** July Promotions ****
- ~Serenity Spa Hawaii (For more info. call: 926-2882)

OUTRIGGER WAIKIKI:

- 4-6p Duke's: HENRY KAPONO (info. 922-2268)
- 2p Hula Grill: Aloha Hour / 7-9p Bruce Spencer & Bobby Kini w/Jaime (info. 923-4852)
- ** July Promotions ****
- Waikiki Plantation Spa (For more info. call: 926-2880)

WAIKIKI BEACH WALK:

- 5-6p , Na Mele No Na Pua "Sunday Showcase", Henry Kaleialoha Allen, Fountain Stage (info. 931-3591)**
- 6-6:45p Hula Implements work shop at MANA HI (info. 923-2220)
- ** July Promotions ****
- ~Island Heritage (For more info. call: 923-4400)
- ~POPITS (For more info. call: 922-9500)

Monday, 7/11

OUTRIGGER REEF:

- 9a-1p & 6-9p Kuloko Arts of Hawaii: Guest Artist (info. 922-5110)
- 3-5p Kani Ka Pila Grill: Happy Hour / 6-9p Sean Naauao (info. 924-4990)

OUTRIGGER WAIKIKI:

- 4-6p Duke's: Haumea Warrington / 9:30p-12a Ellsworth Simeona (info. 922-2268)
- 4p Hula Grill: Aloha Hour / 7-9p Eric Lee (info. 923-4852)

WAIKIKI BEACH WALK:

- 4-4:45p The Art of Lei Making at MANA Hawaii (info. 923-2220)

Tuesday, 7/12

**HOLIDAY INN WAIKIKI
BEACHCOMBER RESORT:
OUTRIGGER REEF:**

- 9a-5p Jimmy Buffett's: Free Surfing Museum Tours (info. 791-1200)

- 9a-1p & 6-9p Kuloko Arts of Hawaii: Guest Artist (info. 922-5110)
- 3-5p Kani Ka Pila Grill: Happy Hour / 6-9p Weldon Kekauoha (info. 924-4990)

OUTRIGGER WAIKIKI:

- 4-6p Duke's: Haumea Warrington / 9:30p-12a Ellsworth Simeona (info. 922-2268)
- 4p Hula Grill: Aloha Hour / 7-9p Kamuela Kahoano (info. 923-4852)

WAIKIKI BEACH WALK:

- 10-10:30a Learn Hawaiian Language at MANA Hawaii (info. 923-2220)
- 4-5p Ku Ha'aeo~Evening Hula, Fountain Stage (info. 931-3591)**
- 5-7p JAL Ho'olaule'a, Fountain Stage**

Wednesday, 7/13

OUTRIGGER REEF:

- 9a-1p & 6-9p Kuloko Arts of Hawaii: Guest Artist (info. 922-5110)

OUTRIGGER WAIKIKI:

- 3-5p Kani Ka Pila Grill: Happy Hour / 6-9p Cyril Pahinui (info. 924-4990)
- 4-6p Duke's: Haumea Warrington / 9:30p-12a Ellsworth Simeona (info. 922-2268)
- 6p Strolling Hawaiian music by Hemapa'a
- 4p Hula Grill: Aloha Hour / 7-9p Jeremy Cheng (info. 923-4852)

WAIKIKI BEACH WALK:

- 4-4:45p Entry to Hula at MANA Hawaii (info. 923-2220)

Thursday, 7/14

**HOLIDAY INN WAIKIKI
BEACHCOMBER RESORT:
OUTRIGGER REEF:**

- 9p Jimmy Buffett's: Kailua Bay Buddies (info. 791-1200)

OUTRIGGER WAIKIKI:

- 9a-1p & 6-9p Kuloko Arts of Hawaii: Guest Artist (info. 922-5110)
- 3-5p Kani Ka Pila Grill: Happy Hour / 6-9p Del Beazley (info. 924-4990)

WAIKIKI BEACH WALK:

- 4-6p Duke's: Haumea Warrington (info. 922-2268)
- 4p Hula Grill: Aloha Hour / 7-9p Sheila Waiwaiole & Mara Sagapolu (info. 923-4852)
- 4-4:45p `Ukulele at MANA Hawaii (Mana Hawaii info. 923-2220)
- 9p-12a Giovanni Pastrami: Free Karaoke (info. 923-2100)

Friday, 7/15

**HOLIDAY INN WAIKIKI
BEACHCOMBER RESORT:
OUTRIGGER REEF:**

- 9:30a-5p Jimmy Buffett's: Free Surfing Museum Tours (info. 791-1200)
- 9:30p Kailua Bay Buddies

OUTRIGGER WAIKIKI:

- 9a-1p & 6-9p Kuloko Arts of Hawaii: Guest Artist (info. 922-5110)
- 3-5p Kani Ka Pila Grill: Happy Hour / 6-9p Kaukahi (info. 924-4990)
- 5p Piano by Jeanette Travias, Lobby
- 4-6p Duke's: Maunalua (info. 922-2268)
- 4p Hula Grill: Aloha Hour / 7-9p Alike Souza & Kalani Maio w/Jaime (info. 923-4852)
- 10-10:45a Hula at MANA Hawaii (info. 923-2220)

WAIKIKI BEACH WALK:

Saturday, 7/16

**HOLIDAY INN WAIKIKI
BEACHCOMBER RESORT:
OUTRIGGER REEF:**

- 9:30p Jimmy Buffett's: Kailua Bay Buddies (info. 791-1200)

OUTRIGGER WAIKIKI:

- 9a-1p & 6-9p Kuloko Arts of Hawaii: Guest Artist (info. 922-5110)
- 3-5p Kani Ka Pila Grill: Happy Hour / 6-9p Manoa Madness (info. 924-4990)
- 4-6p Duke's: Beach 5 Band / 9:30p-12a Chris Murphy Duo (info. 922-2268)
- 3:30p Hula Grill: Aloha Hour / 7-9p Kaipo Dabin & Kauokalani Moikeha w/Kahanu (info. 923-4852)

WAIKIKI BEACH WALK:

- 5-7p JAL Ho'olaule'a, Fountain Stage**



Activities are subject to change or cancellation without notice.

Weekly Events & Promotions

July 17-23, 2011



Sunday, 7/17

HOLIDAY INN WAIKIKI
BEACHCOMBER RESORT:
OUTRIGGER REEF:

- 9p Jimmy Buffett's: Kailua Bay Buddies (info. 791-1200)
- 9a-1p & 6-9p Kuloko Arts of Hawaii: Guest Artist (info. 922-5110)
- 3-5p Kani Ka Pila Grill: Happy Hour / 6-9p Holunape (info. 924-4990)
- ** July Promotions ****
- ~Serenity Spa Hawaii (For more info. call: 926-2882)

OUTRIGGER WAIKIKI:

- 4-6p Duke's: HENRY KAPONO (info. 922-2268)
- 2p Hula Grill: Aloha Hour / 7-9p Bruce Spencer & Bobby Kini w/Jaime (info. 923-4852)
- ** July Promotions ****
- Waikiki Plantation Spa (For more info. call: 926-2880)

WAIKIKI BEACH WALK:

- 5-6p , Na Mele No Na Pua "Sunday Showcase", Eddie Palama, Fountain Stage (info. 931-3591)**
- 6-6:45p Hula Implements work shop at MANA HI (info. 923-2220)
- ** July Promotions ****
- ~Island Heritage (For more info. call: 923-4400)
- ~POPITS (For more info. call: 922-9500)

Monday, 7/18

OUTRIGGER REEF:

- 9a-1p & 6-9p Kuloko Arts of Hawaii: Guest Artist (info. 922-5110)
- 3-5p Kani Ka Pila Grill: Happy Hour / 6-9p Sean Naauao (info. 924-4990)

OUTRIGGER WAIKIKI:

- 4-6p Duke's: Haumea Warrington / 9:30p-12a Ellsworth Simeona (info. 922-2268)
- 4p Hula Grill: Aloha Hour / 7-9p Eric Lee (info. 923-4852)
- 4-4:45p The Art of Lei Making at MANA Hawaii (info. 923-2220)

WAIKIKI BEACH WALK:

Tuesday, 7/19

HOLIDAY INN WAIKIKI
BEACHCOMBER RESORT:
OUTRIGGER REEF:

- 9a-5p Jimmy Buffett's: Free Surfing Museum Tours (info. 791-1200)
- 9a-1p & 6-9p Kuloko Arts of Hawaii: Guest Artist (info. 922-5110)
- 3-5p Kani Ka Pila Grill: Happy Hour / 6-9p Weldon Kekauoha (info. 924-4990)

OUTRIGGER WAIKIKI:

- 4-6p Duke's: Haumea Warrington / 9:30p-12a Ellsworth Simeona (info. 922-2268)
- 4p Hula Grill: Aloha Hour / 7-9p Kamuela Kahoano (info. 923-4852)

WAIKIKI BEACH WALK:

- 10-10:30a Learn Hawaiian Language at MANA Hawaii (info. 923-2220)
- 4:30-6p Ku Ha 'aheo~Evening Hula, Fountain Stage (info. 931-3591)**

Wednesday, 7/20

OUTRIGGER REEF:

- 9a-1p & 6-9p Kuloko Arts of Hawaii: Guest Artist (info. 922-5110)
- 3-5p Kani Ka Pila Grill: Happy Hour / 6-9p Cyril Pahinui (info. 924-4990)

OUTRIGGER WAIKIKI:

- 4-6p Duke's: Haumea Warrington / 9:30p-12a Ellsworth Simeona (info. 922-2268)
- 6p Strolling Hawaiian music by Hemapa'a
- 4p Hula Grill: Aloha Hour / 7-9p Jeremy Cheng (info. 923-4852)

WAIKIKI BEACH WALK:

- 4-4:45p Entry to Hula at MANA Hawaii (info. 923-2220)

Thursday, 7/21

HOLIDAY INN WAIKIKI
BEACHCOMBER RESORT:
OUTRIGGER REEF:

- 9p Jimmy Buffett's: Kailua Bay Buddies (info. 791-1200)

OUTRIGGER WAIKIKI:

- 9a-1p & 6-9p Kuloko Arts of Hawaii: Guest Artist (info. 922-5110)
- 3-5p Kani Ka Pila Grill: Happy Hour / 6-9p Del Beazley (info. 924-4990)

WAIKIKI BEACH WALK:

- 4-6p Duke's: Haumea Warrington (info. 922-2268)
- 4p Hula Grill: Aloha Hour / 7-9p Sheila Waiwaiole & Mara Sagapolu (info. 923-4852)
- 4-4:45p `Ukulele at MANA Hawaii (Mana Hawaii info. 923-2220)
- 9p-12a Giovanni Pastrami: Free Karaoke (info. 923-2100)

Friday, 7/22

HOLIDAY INN WAIKIKI
BEACHCOMBER RESORT:
OUTRIGGER REEF:

- 9:30a-5p Jimmy Buffett's: Free Surfing Museum Tours (info. 791-1200)
- 9:30p Kailua Bay Buddies

OUTRIGGER WAIKIKI:

- 9a-1p & 6-9p Kuloko Arts of Hawaii: Guest Artist (info. 922-5110)
- 3-5p Kani Ka Pila Grill: Happy Hour / 6-9p Kaukahi (info. 924-4990)
- 5p Piano by Jeanette Travias, Lobby
- 4-6p Duke's: Maunalua (info. 922-2268)
- 4p Hula Grill: Aloha Hour / 7-9p Alika Souza & Kalani Maio w/Jaime (info. 923-4852)

WAIKIKI BEACH WALK:

- 10-10:45a Hula at MANA Hawaii (info. 923-2220)

Saturday, 7/23

HOLIDAY INN WAIKIKI
BEACHCOMBER RESORT:
OUTRIGGER REEF:

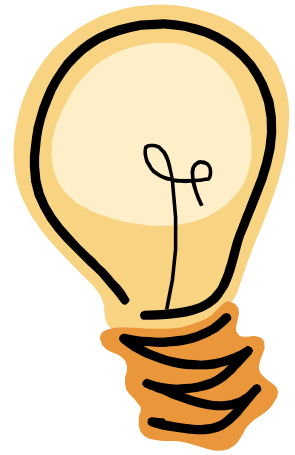
- 9:30p Jimmy Buffett's: Kailua Bay Buddies (info. 791-1200)

OUTRIGGER WAIKIKI:

- 9a-1p & 6-9p Kuloko Arts of Hawaii: Guest Artist (info. 922-5110)
- 3-5p Kani Ka Pila Grill: Happy Hour / 6-9p Eric Lee (info. 924-4990)
- 4-6p Duke's: Beach 5 Band / 9:30p-12a Chris Murphy Duo (info. 922-2268)
- 3:30p Hula Grill: Aloha Hour / 7-9p Kaipō Dabin & Kauokalani Moikeha w/Kahanu (info. 923-4852)

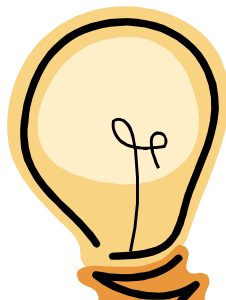


Activities are subject to change or cancellation without notice.



WAIKIKI COMMUNITY CENTER and BLUE PLANET FOUNDATION PARTNER FOR LIGHTBULB EXCHANGE!

WCC is partnering with Blue Planet Foundation to help shape new clean energy usage in Hawaii. The mission of the Blue Planet Foundation is to end the use of fossil fuels on Earth starting in Hawaii. WCC's mission is to provide quality programs and services for the people of Waikiki. A perfect match! YOU can help! Bring a can of food for the WCC Emergency Food Pantry and your incandescent bulb and exchange them for a FREE new Compact Florescent Light (CFL). The exchanges will be made at the *Welcome Table* located near the main office on Tuesday, July 19th and Friday, July 22nd (10 bulb's max). Remember, if we work together, small changes make a big impact!" WCC is located at 310 Paoakalani Ave. For more information call 923-1802. Complimentary parking is available.





BELLY DANCING



FREE BELLY CLASS

JULY 30th, 2011

SATURDAY Room 202E

11:00am – 11:30 a.m. (30mins)

Masayo Loyd teaches contemporary and modern Egyptian techniques with Zill (finger cymbals) and veil. Each class will focus on learning isolation and separation of simple to complex movements and combinations; as well as layering movements while playing finger cymbals. Learn proper posture and execution of movements to prevent injuries. Added classes:

BELLY CLASS

EVERY SATURDAY 11:30-1:00 p.m.

Single Fee Members: \$7, Guest's \$14

June 4, 11, 18, 25

July 16, 23, 30

August 6, 13, 20, 27

Sept. 10, 17, 24

Wear comfortable workout clothes, dance with bare feet or with dance sandals (soft sole dance shoes). Bring water, towel and a smile! Register at WCC Office (Mon.–Fri. 8 am-5 pm one week prior to the starting date). This class is open to all levels and not restricted to any body types. Once purchased no refund. Bring receipt to class in order to participate. This is an ongoing class (1 hr. 30 min.) For more information call 923-1802 or visit: www.waikikicommunitycenter.org