



WAIKĪKĪ IMPROVEMENT ASSOCIATION

Wikiwiki Wire

E-newsletter keeping you up to date on Waikīkī news, features, trends and more!

Volume XX No. 12

December 2019

Kuhio Beach Sand Bag Project Completed

The Department of Land and Natural Resources (DLNR) and the Waikīkī Beach Special Improvement District (WBSIDA) have just completed a new beach improvement and shoreline stabilization project for Waikīkī Beach. The project serves to demonstrate a successful public-private partnership with the WBSIDA funding 50% of the project cost of the state project and providing logistical and technical support for through the University of Hawai'i Sea Grant Program.

The project consists of a 95 foot-long sandbag stub groin and the transfer of 700 cubic yards of beach sand from the Diamond Head swim basin of Kuhio Beach. The groin and beach sand serve to stabilize the Diamond Head (South east) end of Kuhio Beach park fronting the Duke Kahanamoku statue. The purpose of



Continued on next page

Inside this issue:

Kuhio Beach Sand Bag Project Completed

Honolulu Marathon Advisory

Kalakaua Sidewalk Project Update

Hilton Hawaiian Village's Tapa Tower Renovated and Reimagined into Tapa Collection

The Royal Hawaiian Pastry Chefs Lead Classes in Christmas Cookie & Cupcake Decorating

Hard Rock Cafe Honolulu Unwraps Two New Limited-Time Holiday Menus

The Royal Hawaiian, A Luxury Collection Resort Transforms to Welcome 2020

Celebrate the Holidays at the Honolulu Zoo with Christmas with the Animals

Waikiki Hula Show at the Kuhio Beach Hula Mound

Attachments

Celebrate the Holidays at Hilton Hawaiian Village with Seasonal Menus

Duke's Lane Market & Eatery: Basalt Christmas Dinner Specials and Entertainment

Royal Hawaiian Center: The Holidays Have Arrived, Fukubukuro This New Year's Day, Hawaiian Nightly Entertainment, Hawaiian Culture

WOLFGANG Steakhouse: Celebrate the Season

Top of Waikiki: Stay On Top of the Holidays

Rumfire and Sheraton Waikiki preparing to Welcome 2020 with Rio Carnival and Headliner Haliene

Waikiki Beach Walk: Holiday Mele 2019

Halekulani: Halekulani Bakery & Restaurant at Halepuna Waikiki now Open, Wineview at Cattleya, SpaHalekulani Living Well Lecture

Noi Thai Experience: Make Your Holidays a Royal Experience

What's Happening at Hyatt Regency Waikiki Beach Resort and Spa and Pualeilani Atrium Shops

Moana Surfrider, A Westin Resort & Spa to Embark on Global Journey to Welcome 2020
Rocky Japanese Teppanyaki Steak Restaurant Honolulu Marathon Carb Load All December Long

Il Lupino Trattoria & Wine Bar Holiday Season Celebration

Hilton Waikiki Beach December Dining & Events Including Christmas Prime Rib Buffets, New Year Prix Fixe Dinner at MAC 24/7 and more

The Buffett at Hyatt Christmas Buffet ad Feast to Go

International Market Place Welcomes MCM Worldwide

Waikiki Beach Walk Entertainment & Activities including Holiday Melee, Free 'Ukulele Lessons Market on the Lawn, Quilting Class and more

Waikiki Toy Jam Promotion Until December 22

Crave - The Hunger for Adventure Begins at Waikiki Beach Walk

Happy Holidays From Island Vintage Wine Bar

Take a Step Up and Save at Waikiki Beach Walk

Sky Waikiki Masquerade Party on December 31

Happy Holidays from bills Hawaii

Hilton Hawaiian Villa Rings in the New Year with Party on the Great Lawn

December 31 FIREWORKS

Hawai'i Convention Center Tis The Season or Winter Wishes

... and MORE

Continued from front page

the project is to fix an erosion hot spot in the far eastern corner of Royal Hawaiian Beach until such time a more comprehensive master planning effort for Waikiki Beach can be completed.

“This project demonstrates the successful outcome of a public-private partnership that has formed in Waikiki for beach improvements and is an important element of a longer-term vision for comprehensive beach management and maintenance in Waikiki.” said Susanne Case, Director of the DLNR.



“The Waikiki Beach Special Improvement District is proud to be a partner in this important beach management effort but also pleased to see the commencement of the first new beach improvement construction project in Waikiki in a generation said Rick Egged, President of the Waikiki Beach Special Improvement District Association.

The \$568,000 State project is supported through a public-private partnership with the Waikiki Beach Special Improvement District which is paying for 50% of the project through a special tax assessment from Waikiki commercial properties. The University of Hawai'i Sea Grant College Program is providing public outreach and technical support for the project and will be involved with project monitoring and evaluation. The City and County of Honolulu is also a project partner since the project falls within the Kuhio Beach Park boundaries and is providing access and staff support.

The project was completed on Tuesday, November 26th, 2019 with a construction period of 3 weeks. The project consultant and engineering designer is Sea Engineering Inc and the contractor for construction is JS International, Inc. Weekly project monitoring will be conducted and monthly technical assessments to evaluate the performance of the groin and beach restoration.

DLNR Contact Information: Sam Lemmo (808) 587-0377

WBSIDA Contact Information: Rick Egged (808) 923-1094

Project webpage and construction photos: <https://www.wbsida.org/kuhio-beach-sandbag-groin>



Aloha All,

The Honolulu Marathon takes place this Sunday, December 8, 2019. Click the following link for the Traffic Advisory ...

<https://www.honolulumarathon.org/key-information/traffic-advisory>

Kalākaua Avenue will be closed from 3:30 am to 9:00 am.

Please advise your staff and guests.

Merry Christmas,

Rick Egged

President

Waikīkī Improvement Association



Kalākaua Sidewalk Project Update

In the summer of 2018 we saw the start of the rehabilitation of the well-worn sidewalks of Waikīkī. Stretching along Kalākaua Ave to Kapahulu Avenue and ending at Kapi'olani Park, the sidewalks of the Waikīkī have been getting a needed face lift. The red brick is being replaced with quartzite flag stone, landscaping and irrigation as part of the beautification project. While there has been challenges and delays, the project is moving towards completion.

The section in front Outrigger Waikiki Beach Resort & Hotel has been turned over to the City and the Waikīkī Business Improvement District (WBID) for maintenance and upkeep.

The irrigation, landscaping, and quartzite pavers fronting Foster Tower and the Aston Waikiki Beach Hotel has been completed. Near the Park Shore Hotel, the majority of the quartzite is installed. The construction dates for the irrigation and landscaping are pending. The Alohilani Resort Waikiki Beach still has major work to be done, including installing a new drain line, and construction is ongoing. Work at Macy's is still pending.

The Waikiki sidewalk repaving project is being constructed in phases and expected to be completed by spring, 2020.



Waikīkī Wikiwiki Wire - Newsletter Deadline (updated)

The WIA newsletter is published on the **first Friday** of the month.

Submission deadline: Waikiki-related news and information submitted by members (or their PR agencies) for the newsletter should be **received no later than 5 pm Wednesday** prior to the newsletter that is published and distributed on the first Friday of each month. Articles received after the deadline will be considered for inclusion in the next issue.

Photos: Photos which accompany stories are always welcome and, for best results, should be attached to the email as a separate jpeg - **maximum 500 kb each image**.

PDFs: Single page PDFs are also welcome but they **must look like flyers** and not press releases (so ... do not include the dateline, city, media contact information, boilerplate, etc.) and be a **maximum of 1 MB**.

Press releases: Word or PDF press releases will be edited to fit the one page format or will be returned to you for editing / reformatting.

Your kokua is appreciated. **Mahalo**.

Hilton Hawaiian Village's Tapa Tower Renovated and Reimagined into Tapa Collection

Guestrooms and corridors will be modernized and refreshed to reflect the beauty of the ocean and the art of tapa

Hilton Hawaiian Village Waikiki Beach Resort's Tapa Tower is undergoing an extensive renovation of its guestrooms, suites and corridors. The reimagined rooms have debuted as the Tapa Collection, featuring palettes that combine the beauty and power of the Pacific Ocean with the natural materials and patterns found in Hawaii's treasured tapa cloth. The renovations, which are now underway, will be completed in phases with the first rooms already available for guest stays.

Hilton Hawaiian Village partnered with hospitality design and architecture firm Looney & Associates to devise the new design direction. Corridor carpeting resembles the ebb and flow of the Waikiki shoreline as it draws guests toward the spacious, newly renovated rooms. Upon entry, deep blues and subtle textures summon relaxation and understated elegance, while tech updates facilitate convenient digital connectivity. Each room features modern furnishings combined with textiles and wall art that honor the Hawaiian culture's vital connection to the land and sea and the distinctive patterns of tapa. Tapa Collection rooms offer a spacious layout and furnished balconies that open up to the various beautiful vistas of Waikiki. The guestrooms retain the room category flexibility that Tapa Tower has become known for, including ocean view rooms, junior suites, one bedroom suites, and Tapa Family Rooms - a unique and spacious room layout with two queen beds and a king bed.

The Tapa Tower first opened in 1982 on the site of the former Village Tower, which was demolished in 1979. In 2006, "The Tapa Makers" statue was unveiled at the Tapa Tower, portraying master tapa maker, Puanani Van Dorpe and Lauhuki a me La'ahana, the Patron Goddesses of Tapa making. Van Dorpe devoted much of her life to preserving the ancient art of Hawaiian tapa making with traditional materials and techniques. For close to 30 years, she patiently gathered old accounts of tapa processes and put them to actual test, carefully recording and evaluating the results of each experiment. Through the arduous practice she was able to produce tapa that is identical to kapa produced centuries ago. She began working on the largest unbroken sheet of tapa on November 15, 1995. When intact, the tapa sheet measured 32 feet by three feet. Pieces of the original sheet can now be found framed and displayed at various locations throughout the Tapa Conference Center.

The statue of Van Dorpe is one in a series of art pieces dedicated to preserving and perpetuating the Hawaiian culture at the Hilton Hawaiian Village.

For more information about Tapa Collection visit, www.TapaCollection.com.

Hawaiian Diacritical Marks

Waikiki Improvement Association recognizes the use of diacritical marks (i.e., glottal stop (ʻ), macron (ā) in place names of Hawai'i, such as Waikiki and Kalākaua Avenue and will include them whenever possible. We also respect the individual use (or not) of these markings for names of organizations and businesses.

There will also be times when we may not have a chance to add or change the markings in all of the articles submitted and when that happens, e kala mai.

The Royal Hawaiian Pastry Chefs Lead Classes in Christmas Cookie & Cupcake Decorating



Luxury Collection Resort this year. Pastry chefs at the Pink Palace of the Pacific are putting on two special classes in December: one on cookie decorating, and another on cupcake decorating.

In the sessions led by **Pastry Chefs Miki Iwai and Kristie Sagara**, you'll learn to pipe icing and decorate Christmas-themed cookies and cupcakes. Both chefs are excited to share their tips and ideas that they use when decorating sweets in the pastry kitchen during the Christmas holidays. The following two classes will be offered:

Cookies and Cocoa: Participants will stack star-shaped cookies to create a gingerbread Christmas tree with Chef Miki Iwai on Thursday, December 19. As a bonus, Iwai will lead the class in creating a snowman-themed cocoa mix in a mason jar.

Cupcakes: Chef Kristie Sagara leads her class in decorating five mini cupcakes to create a cupcake Christmas wreath on Saturday, December 21.

Participants are welcomed at 10 a.m. and will be treated to a cup of creamy hot chocolate and delicious pastries baked by The Royal Hawaiian Pastry team at the start of each Christmas themed decorating class. Instruction begins at 10:15 a.m. and runs until 11:30 a.m. And everyone leaves with their beautifully decorated gingerbread Christmas tree or cupcake designed wreath.

The cost of each class is \$45 per person with a portion of the proceeds being donated to the Susan G. Komen Hawaii – Race to the Cure. Children ages 5 years and older are welcome and must be accompanied by an adult. Classes are located at The Royal Hawaiian, a Luxury Collection Resort in the newly renovated Regency Ballroom I. Casual attire is recommended and participants should consider bringing along an apron.

Call 808-931-7912 or email RH.GuestExperience@LuxuryCollection.com to reserve your seat. Complimentary four-hour validated valet parking at the hotel or self-parking in the Sheraton Waikiki's garage is included.



Hard Rock Cafe Honolulu Unwraps Two New Limited-Time Holiday Menus

Hard Rock Cafe Honolulu will unwrap two new limited-time holiday menus in celebration of the season. The two- and three-course menus will be available from December 2, 2019 through January 2, 2020, and feature an array of legendary mouthwatering menu items from which to choose.

Festive Menu

The Festive Menu features a choice of One Night in Bangkok Spicy Shrimp or Blue Cheese Chopped Salad for the appetizer; a choice of a Big Cheeseburger, Original Legendary Burger, One Night in Bangkok Shrimp Burger, BBQ Grilled Chicken, The Impossible Burger, Smoked Barbecue Combo, Steak Salad or Grilled Salmon for the entrée; and a Holiday Brownie for dessert. It is priced at \$28.95 for two courses and \$33.95 for three courses.

Kiss Me Under the Mistletoe Menu

Kiss Me Under the Mistletoe features a choice of Caesar Salad Bruschetta or Blue Cheese Chopped Salad for the appetizer; a choice of Full Rack Baby Back Ribs, Bordeaux Burger, One Night in Bangkok Shrimp Burger, BBQ Grilled Chicken, Original Legendary Burger, The Impossible Burger, Grilled Salmon or New York Strip Steak with Marinated Mushrooms for the entrée; and a Holiday Brownie and Espresso Martini for dessert. This menu is priced at \$33.95 for two courses and \$39.95 for three courses.

Both holiday menus are pre-sold options only, so diners will need to call to make a reservation. The menus will be available daily between December 2, 2019 and January 2, 2020, from 11 a.m. to closing. For reservations, call (808) 921-2242.



The Royal Hawaiian, A Luxury Collection Resort Transforms Into Wonderland to Welcome 2020



[The Royal Hawaiian, a Luxury Collection Resort](#) is rewriting the script on its classic New Year's Eve party. This year, the Pink Palace of the Pacific is the setting for "Adventures in Wonderland" at the picturesque Ocean Lawn, Monarch Room and Mai Tai Bar with the best views of the fireworks off Waikiki Beach at midnight.

The swanky soiree begins at 8:30 p.m. on Tuesday, December 31, and promises to be an upscale, posh celebration in true Royal fashion with a grand chefs' table buffet, acclaimed deejay Teley, dancers all night long, and beachfront views of the fireworks at midnight. Executive Chef Colin Hazama, Executive Sous Chef Lenny Ushidate, Sous Chef "Mac" Alop and their teams have put together a menu of true opulence and decadence:

FRESH FROM THE OCEAN

Includes a Glass of Sparkling Rose
 PIER 38 POKE AND CHILLED OCEAN DISPLAY
 Monarch Style Ahi Poke & Rainbow Poke
 Citrus Chilled Prawns, Kona Lobster & Fresh Chilled Oysters
 FLIGHTS OF CAVIAR AROUND THE WORLD, ONLY AT THE ROYAL
 VODKA CURED KANPACHI
 Shaved Watermelon radish + Wasabi ikurazuke
 LEMON VERBENA SCENTED CHILLED DUNGENESS CRAB
 Avocado coconut mousse & Sturia Caviar
 CHILLED MARINATED ABALONE POKE
 Aili Mushroom, Lemon Ginger, Smoked Trout Roe

SALADS

JA FARMS GREENS
 Red Wine Spiced Pear, Candied Walnuts, Prosciutto, Shallot Mustard Vinaigrette
 ARTISANAL CHEESE AND CHARCUTERIE
 Prosciutto de Parma, Speck, Salami, Truffle Boschetto, Naked Cow Dairy Pink Peppercorn,
 Triple Crème, Humboldt Fog, Cured Olives and Glazed Figs
 HO FARMS VINE RIPE TOMATOES
 Caramelized Orange, Cilagene Cheese, Hawaiian Sea Salt, Arugula Jus
 ROASTED FINGERLING POTATO SALAD
 Applewood Smoked Bacon, Chinese Long Beans,
 Pomegranate and Thai Basil Cream

CELEBRATION ENTREES

SPICED CHICKEN BREAST
 Lemon Brussel Sprout Ragout, Foie Gras Sauce ONAGA
 Vanilla Hearts of Palm Puree, Watermelon Radish Kahuku Sea Asparagus, Truffle Dashi
 LAVENDER GLAZED DUCK BREAST
 Braised Turnips, Bok Choy, Cherry Jubilee Reduction
 KIAWE SMOKED PORK BELLY BACON
 Gingered Butternut Puree, Pickled Mustard Seed, Roasted Ho Farms Carrots, Lemongrass Soy
 Glaze STEAMED KING CRAB LEGS
 Drawn Garlic Herb Butter and Lemon
 GINGER SCALLION DRIED SCALLOP FRIED RICE WITH RED JALAPENOS
 YUKON POTATO AU GRATIN, 3 CHEESE, HERBS
 Broccoli Rabe, Roasted Kabocha Pumpkin, Onion Confit, Slow Cooked Ho Farms Tomatoes

CARVED TO ORDER

ROSEMARY SALT CRUSTED SMOKED PRIME RIB OF BEEF
 Roasted Garlic Beef Au jus, Creamy horseradish & Dijon mustard
 MUSTARD MINT CRUSTED RACK OF LAMB
 Fennel Pollen, Hibiscus Port Wine Gastrique

DESSERT

CHOCOLATE DECADENCE BITES
 Candied Yuzu
 STRAWBERRY HIBISCUS TORTE, CHAMPAGNE GELEE
 "PINK PARTY VEREEN"
 Raspberry Dragon fruit, Lemon sponge, Yogurt Poppy seed, Pavlova
 "CELEBRATION GLITTER CHOCOLATE LOLLIPOP BAR"
 CRANBERRY BROWN BUTTER FINANCIER
 Pistachio Praline

General admission tickets are \$250 for adults and \$175 for children. Mai Tai Bar Reserved Table Seating is available for \$250 per person, or \$350 per person for the Champagne Lanai Oceanfront Terrace. Tickets can be purchased at [Honolulu Box Office](#). A 21 percent service charge, Hawaii state tax and box office fees per ticket will be charged separately.

The ultimate way to enjoy Wonderland on New Year's Eve at The Royal Hawaiian is with a VIP Cabana in a reserved area, lavish décor, 2 bottles of champagne and the best direct view of the fireworks spectacular. To inquire about VIP Cabanas, contact Erin Shimabukuro at (808) 931-8476, or via e-mail at erin.shimabukuro@marriott.com.

Celebrate the Holidays at the Honolulu Zoo with Christmas with the Animals

Christmas will be coming early for animals at the Honolulu Zoo at its annual Christmas with the Animals event on Saturday, December 21, 2019.

Holiday cheer will be in full swing, as visitors see the zoo's beloved animals receive and "open" special enrichment gifts, such as food, treats, and toys. In addition to witnessing this wild gift exchange, guests and their families can also enjoy live music strolling the grounds, hands-on educational and craft activities and a special appearance from Santa Claus himself.

Visitors can watch their favorite animals enjoy their special gifts of enrichment. The schedule for the morning is as follows:

- 9:00 a.m. Honolulu Zoo Gates Open
- 9:30 a.m. 2:00 p.m. Animal enrichment presentations
- 10:30 a.m. – 12:30 p.m. Santa Claus Meet & Greet, Crafts, Live Entertainment and Keiki Activities

Christmas with the Animals is included with paid admission to the Honolulu Zoo on Saturday, December 21. For more information, visit www.honolulu zoo.org or call (808) 926-3191.

For information on how to support the Honolulu Zoo, visit www.honolulu zoo.org or call (808) 926-3191.

Waikīkī Hula Show at the Kūhiō Beach Hula Mound

SHOW TIME IS 6:00-7:00 FOR NOV-DEC-JAN

Kuhio Beach Hula Show – December 2019

Authentic Hawaiian music and hula shows by Hawaii's finest halau hula (dance troupes) and Hawaiian performers. Opens with torch lighting and traditional blowing of conch shell. Tues-Thurs-Sat, weather-permitting. 6:30-7:30 p.m. (6:00-7:00 p.m. Nov-Dec-Jan) at the Kuhio Beach Hula Mound, diagonally across Kalakaua Ave. from Hyatt Regency Waikiki Beach hotel at Uluniu Ave. FREE, outdoors, casual, with seating on the grass; beach chairs, mats, etc. okay. Cameras welcome. Presented by Hyatt Regency Waikiki Beach Resort & Spa, Hawaii Tourism Authority, City & County of Honolulu and Waikiki Improvement Association. For information, call 843-8002.

Week-nights

Tuesdays – Ainsley Halemanu and Hula Halau Ka Liko O Ka Palai

Thursdays – Joan "Aunty Pudgie" Young and Puamelia

NO SHOWS TUESDAYS DEC 24 and 31 - HAPPY HOLIDAYS

Week-ends

Sat December 7 — NO SHOW (Pearl Harbor Memorial Parade)

Sat December 14 — Lilinoe Lindsey and Ka Pa Nani O Lilinoe

Sat December 21 — Coline Aiu and Halau Hula O Maiki

Sat December 28 — Shirley Recca and Halau Hula O Namakahulali



Street activity in / near Waikīkī (courtesy of the City)

December 7, 2019 Saturday

5:30 AM Roads Close
8:30 AM Roads Reopen
(Approximate)

KALAKAUA MERRIE MILE RUN sponsored by Honolulu Marathon Association. The event is expected to have 1,700 runners. Lane closures will begin at 5:30AM. It will start at Monsarrat Ave., eastbound, to Kalakaua Ave., u-turn fronting Hyatt Regency, to Kalakaua Ave. to end at Queen's Beach.

Contact: Honolulu Marathon Assn. 734-7200 Fax: 732-7057

For more info, visit their website: <http://www.honolulumarathon.org/>

This permit application has been approved.

December 7, 2019 Saturday

5:30 PM Road Closes
7:30 PM Road Reopens
(Approximate)

PEARL HARBOR MEMORIAL ANNIVERSARY PARADE sponsored by Pearl Harbor Memorial Committee. The event is expected to have 2,000 marchers, 40 vehicles, 8 floats, & 10 bands. It will start at Ft. DeRussy, to Kalakaua Ave., to end at Kapahulu/Kalakaua/Monsarrat Aves. grassy area fronting the Hon Zoo. Contact: Moa Mahe 626-8590 or 741-4441, Email:info@pearlharborparade.org For more info, check out their website: <http://www.pearlharborparade.org/>

This permit application has been approved.

December 8, 2019 Sunday

2:30 AM Roads Close
4:00 PM Roads Reopen
(Approximate)

HONOLULU MARATHON sponsored by Honolulu Marathon Association. They expect to have 35,000+ runners. It will start on Ala Moana Blvd., near Queen St., to Ala Moana Blvd., ewa bound, to Nuuanu Ave., to King St., to Kapiolani Blvd., to Piikoi St., to Ala Moana Blvd., to Kalakaua Ave., to Monsarrat Ave., to Paki Ave., to Diamond Hd. Rd., to 18th Ave., to Kilauea Ave., to Waialae Ave., to Kalaniana'ole Hwy., to Hawaii Kai Dr., to Keahole St. to Kalaniana'ole Hwy., to Kealaolu Ave., to Kahala Ave., to Diamond Head Rd., to Kalakaua Ave., end at Honolulu Marathon finish/Kapiolani Bandstand. Roadways closed: 1)H1 Freeway closed at Waialae Ave. off ramp to Aina Koa Ave., 2)Kalaniana'ole Hwy., makai half closed for runners, between Aina Koa Ave. & Kawaihae St., mauka half converted to contra flow, 3)Kalaniana'ole Hwy., all lanes closed, between Kawaihae St. & Keahole St., Contact: JJ Johnson 782-2161. Honolulu Marathon Assn. 734-7200 Fax: 732-7057 For more info, visit their website: <http://www.honolulumarathon.org/>

This permit application has been approved.



WAIKĪKĪ IMPROVEMENT ASSOCIATION

2250 Kalākaua Avenue, Suite 315, Honolulu, HI 96815

Waikīkī Wikiwiki Wire is published on the first Friday of each month
by Sandi Yara Communications for WIA

If you would like to share your news with other members, please send your info to:
editor@waikikiimprovement.com



Celebrate the Holidays at Hilton Hawaiian Village with Seasonal Menus

The resort offers specialty Christmas Eve and Day menus in signature restaurants

With a wide variety of restaurants to choose from, [Hilton Hawaiian Village Waikiki Beach Resort](#) is the ideal place for an unforgettable holiday meal. Delicious options abound, from specialty à la carte items at Tropics Bar & Grill and Bali Steak & Seafood, to an elaborate dinner buffet at Rainbow Lanai. The Waikiki Starlight Luau will also present a special holiday menu during its spectacular luau show on Christmas Day. Below is just a sample of what will be offered at Hilton Hawaiian Village.

Tropics Bar & Grill Christmas Eve & Day Specials

Dec. 24 and 25, 2019 | 5-10 p.m.

À la carte menu includes:

Soup

- **Kona lobster and Kahuku corn chowder (\$12)**

Entrée

- **Kiawe smoked strip loin (\$41)**
- **Hawaiian water treasures bouillabaisse (\$45)**

Dessert

- **Eggnog crème brûlée (\$11)**

For the full menu visit this [link](#).

Rainbow Lanai Christmas Eve & Day Buffets

Dec. 24 and 25, 2019 | 5-8:30 p.m. | Adult \$59.95 | Child \$29.95 (5-11 years)

For reservations, please call (808) 949-4321 ext. 39.

Christmas Eve menu highlights Include:

Carving Station

- Smoked prime rib
- Roasted tom turkey

Hot Selections

- Steamed mussels

Cold Selections

- Snow crab legs

Desserts

- Chocolate bûche de Noël

Christmas Day menu highlights include:

Carving Station

- Prime rib of beef

- Roasted turkey

Hot Selections

- Steamed island fish

Cold Selections

- Steamed crab

Desserts

- Chocolate bûche de Noël and more

Please see the following for the full [Christmas Eve menu](#) and [Christmas Day menu](#).

Bali Steak & Seafood Christmas Eve and Day Specials

Dec. 24 and 25, 2019 | 5:30 p.m. to 9 p.m.

Reservations are recommended. Visit [BaliWaikiki.com](#) or call (808) 949-4321 ext. 39.

Order all four courses and receive 10 percent off.

À la carte menu includes:

Soup

- Creamy tomato basil soup (\$17)

Salad

- Seared ahi niçoise salad (\$25)

Entrée

- Wagyu short rib (\$65)
- Pan roasted island snapper (\$58)

Dessert

- Bûche de Noël (\$12)

For the full menu visit this [link](#).

Waikiki Starlight Luau Christmas Dinner Buffet

Dec. 24 and 25, 2019 | 5:00 p.m. on the Great Lawn

General seating: Adult \$175 | Child \$140 (4-11 years)

For reservations, visit [HHVLuau.com](#) or call (808) 941-5828.

Menu highlights include:

Carving Station

- Slow roasted, dry-aged prime rib

Hot Selections

- BBQ Brisket
- Imu-style kalua pig

Cold Selections

- Spicy au poke
- Futomaki sushi

Dessert

- Mini pumpkin pies and more

For the full menu visit this [link](#).

For more information about the holiday menus visit www.hiltonhawaiianvillage.com/holiday.

Christmas

DINNER SPECIALS

December 25, 2019 | 5 – 9:45 pm

PRIX FIXE \$65
tax & gratuity not included

Starter (choice of)

Roast Duck Croquette
persimmon emulsion, frisee, pickled vegetables

Ahi Carpaccio
black garlic aioli, capers, ogo agrodolce

Soup or Salad (choice of)

Carrot Ginger Soup
coconut milk, spiced cashew

Grilled Baby Romaine Salad
coconut balsamic dressing, prosciutto, manchego cheese

Entree (choice of)

Seafood Bouillabaisse
Kauai prawns, Hokkaido scallop, clams, fresh fish,
braised fennel, leeks, rouille

Braised Bone In Beef Short Rib
parsnip puree, root vegetables

Dessert (choice of)

Yule Log
Chocolate cake, hazelnut mousse, chocolate buttercream

Holiday Profiteroles
Peppermint and spiced caramel apple

For Reservations (808) 923-5689

BASALT
AT DUKES LANE MARKET & EATERY

BASALT

DECEMBER 25, 2019 | 5 - 9:45 PM

À la carte

Lobster Bisque Shot 4 Bowl 9
Caramelized fennel, crème fraîche

Mixed Greens 11
Waipoli lettuce, tomato, hearts
of palm, watermelon radish,
soy-shallot vinaigrette

Rib Eye Steak 51
Truffle-parmesan fingerling potatoes,
choice of B1 Basalt steak sauce or
brandy-peppercorn sauce

Uni & Crab Risotto 49
Ikura, tatsoi, micro shiso

Miso Marinated Black Cod 37
Bok choy, shiitake mushroom, dashi
nage, charred scallion, micro shiso

Lilikoi Crème Brulee 9
Passion fruit custard, caramelized
sugar, fresh raspberries

Macadamia Nut Tart 11
Pineapple compote, lavender
whipped cream

For Reservations (808) 923-5689

BASALT
AT DUKES LANE MARKET & EATERY



Merry Christmas!

BASALT

AT DUKES LANE MARKET & EATERY



Live Music
6-9 PM Daily



"I feel like it's almost a responsibility for me... I'm the only one who sings Hawaiian music in my family... I'm blessed to play with a lot of people and travel a lot of places for Hawaiian music."

Mondays

Mark Caldeira
Acoustic

Tuesdays

Dustin Park
Contemporary

Wednesdays

Chris Mercado
Mar McNally
Lina Robins-Tamure

Thursdays

Kona Abergas
Contemporary

Fridays

Jeremy Hirokawa
Jenna K

Saturdays

Briankeith Espiritu
Kam Omizo
Karl Maruyama

Sundays

Harry Koizumi
Acoustic

Lina Robins-Tamure

THE HOLIDAYS HAVE ARRIVED AT ROYAL HAWAIIAN CENTER



Make your lists and check them twice, because the holidays have arrived at Royal Hawaiian Center. Celebrate the season with sensational holiday shopping, visits with Santa, and a special gift with purchase offer you won't want to miss.



We kicked off the season with Santa's arrival to The Royal Grove and tree lighting on November 27. Santa was honored to welcome special guests this year – Hawai'i's 2018 Children's Miracle Network Champion Kayle O. and his family – as they accompanied him for the trolley ride along Kalākaua Avenue and then enjoyed the festive entertainment with the rest of the audience.

Starting November 27, 2019 through Christmas Eve, guests are invited to sit under the dazzling, 34-foot-tall holiday tree and take FREE photos with Santa using their phones or personal devices on Mondays and Wednesdays from 6:00 to 8:00 p.m., November 27 through December 23, and on Christmas Eve from 8:00 to 10:00 p.m.

Santa will also host holiday activities with keiki on **Friday, December 6, 13, and 20 from 2:00 to 4:00 p.m. in Santa's Hale** (Building A, Level 2). The fun will begin with cookie decorating with kulu kulu honolulu from 2:00 to 2:50 p.m., followed by storytime with Santa from 3:00 to 3:15 p.m. Photos with Santa will open to the public starting at 4:00 p.m. Registration is required to participate in Santa's Hale activities.

Keiki can also keep in touch with The North Pole through Santa's Mailbox. During December, keiki of all ages can visit Santa's Mailbox, located in Helumoa Hale, where they can write letters filled with their Christmas wishes.

Royal Hawaiian Center is spreading more holiday cheer with an exclusive free gift with purchase. **From November 27, 2019 through January 6, 2020,** guests who spend \$500 will receive an exclusive scarf custom-designed by Kim Sielbeck, while those who spend \$1,000 will receive a jute tote bag designed in collaboration with designer David Kim of 'Ōiwi Ocean Gear. But we're not done! Guests who spend \$1,250 or more will receive both gifts – all while supplies last. Don't miss your chance to check off the last items on your holiday shopping list, then keep the free gift (or gifts!) for yourself!

Happy Holidays from Royal Hawaiian Center! We can't wait to welcome you with good tidings and holiday cheer during your next visit. **For a complete calendar of holiday events, visit www.RoyalHawaiianCenter.com.**



YOUR LUCKY YEAR HAS ARRIVED WITH FUKUBUKURO THIS NEW YEAR'S DAY!



On Wednesday, January 1, Royal Hawaiian Center is bringing good luck to 2020 and to all of you with its annual Fukubukuro celebration. A tradition that shoppers eagerly anticipate all year long, Fukubukuro offers significant discounts on “lucky bags” sold for half of their retail value. This year features 32 participating merchants and restaurants, including Fighting Eel, DEAN & DELUCA, kate spade new york, Leather Soul, and more.



The Center’s Fukubukuro range from a few dollars to a few hundred dollars, depending on the merchant. Quantities are limited, so shoppers are encouraged to arrive early on the first day of 2020 to participate in this beloved tradition. Good luck!

Translated as “lucky bag” in Japanese, Fukubukuro traces its roots back to a Tokyo department store in the early 20th century, and has since evolved into one of the most popular New Year traditions in Hawai’i and Japan. It is inspired by the belief that people’s lucky bags reflect the good fortune to come in the new year. Every January 1st, merchants sell their lucky bags for at least half of what they’re worth. The catch? The bag’s contents are kept secret until shoppers purchase them!




HAPPY HOLIDAYS FROM ROYAL HAWAIIAN CENTER



Mele Kalikimaka

TWO FREE HOURS OF PARKING!

With a minimum \$10 purchase at Royal Hawaiian Center.



ROYAL HAWAIIAN CENTER

Free Photos with Santa

Santa will be in The Royal Grove every week this holiday season!

December 2 – 23
Mondays & Wednesdays
6PM – 8PM

December 24
Tuesday
8PM – 10PM



DECEMBER MALU NIU HAWAIIAN NIGHTLY ENTERTAINMENT IN THE ROYAL GROVE, 6-7PM



Thursdays Kūpaoa

The combined talents of Kellen Paik and Līhau Hannahs Paik embody the name they've chosen for their musical presence – Kūpaoa – suffused with fragrance, or heady with scent. Their talents are many, for they infuse musical ability and charm into two sweet, rich voices to offer up an inviting blend.



Tuesdays Waipuna

Waipuna's eclectic musical backgrounds and similar musical taste has led to the development of a unique sound. After the release of their critically-acclaimed first album, Mana'o Pili, the duo, now trio, has been blessed with the opportunity to share their music with Hawai'i.

Fridays 'Ekolu Mākou

'Ekolu Mākou, meaning "We Three," is a trio of sisters who enjoy singing traditional Hawaiian music. Their lilting melodies are reminiscent of Hawai'i of yesteryear and will take you back to an idyllic time when days could be passed in leisure and laughter.



Saturdays Hula Kahiko

Hula Kahiko is a performance of ancient Hawaiian dance by a local hālau hula (school of Hawaiian dance). This month we feature Hālau Hula 'O Kawaiho'omalū.



Wednesdays Malu Productions

Malu Productions is an award-winning company that specializes in custom show presentations and services. Shows are fast-paced, interactive, and sure to entertain audiences of all ages and cultural backgrounds.



HELUMOA HALE

Open daily from 10 a.m. – 8 p.m. Visit us for information about our cultural lessons and special events, to receive an exclusive gift with eligible purchase, or relax in our Heritage Room and learn about the rich history of Helumoa. He mai! 808.922.2299



HAWAIIAN CULTURE ON DISPLAY AT ROYAL HAWAIIAN CENTER



| LĀ PULE SUNDAY | PŌ 'AKAHI MONDAY | PŌ 'ALUA TUESDAY | PŌ 'AKOLU WEDNESDAY | PŌ 'AHĀ THURSDAY | PŌ 'ALIMA FRIDAY | PŌ 'AONO SATURDAY |
|-------------------|---|---|---|---|--|--|
| | DECEMBER 2 10AM: Hula, G1 1PM: Lei Making, C2 3:30PM: Keiki Hula, G1 6-8PM: <i>Kawika Trask/ Santa Photos, G1</i> | DECEMBER 3 9:30AM: Quilting, FC 10AM: Hula, G1 12PM: 'Ukulele, HH 1PM: Lauhala, C2 6PM: <i>Next Gen, G1</i> | DECEMBER 4 12PM: Ho'okani Pila, HH 1PM: Lauhala, C2 4PM: Hula, G1 6-8PM: <i>Danny Carvalho Performs / Santa Photos, G1</i> | DECEMBER 5 12PM: 'Ukulele, HH 1PM: Lauhala, C2 6PM: Ching Ohana, G1 | DECEMBER 6 7AM: <i>KZOO Radio FC</i> 10AM: Hula, G1 12PM: 'Ukulele, HH 1PM: Lei Making, C2 2PM: <i>Santa's Hale, A2</i> 6PM: 'Ekolu Mākou, G1 | DECEMBER 7 1PM: Lei Making, C2 6PM: Hālau Hulo 'O Kawaiho'omalua, G1 |
| | DECEMBER 9 10AM: Hula, G1 1PM: Lei Making, C2 3:30PM: Keiki Hula, G1 6-8PM: <i>Kawika Trask/ Santa Photos, G1</i> | DECEMBER 10 9:30AM: Quilting, FC 10AM: Hula, G1 12PM: 'Ukulele, HH 1PM: Lauhala, C2 6PM: Pu'uhonua, G1 | DECEMBER 11 12PM: Ho'okani Pila, HH 1PM: Lauhala, C2 4PM: Hula, G1 6PM: Malu, G1 6-8PM: <i>Santa Photos, G1</i> | DECEMBER 12 12PM: 'Ukulele, HH 1PM: Lauhala, C2 6PM: Kūpaoa, G1 | DECEMBER 13 10AM: Hula, G1 12PM: 'Ukulele, HH 1PM: Lei Making, C2 2PM: <i>Santa's Hale, A2</i> 6PM: 'Ekolu Mākou, G1 | DECEMBER 14 1PM: Lei Making, C2 6PM: Hālau Hulo 'O Kawaiho'omalua, G1 |
| | DECEMBER 16 10AM: Hula, G1 1PM: Lei Making, C2 3:30PM: Keiki Hula, G1 6-8PM: <i>Kawika Trask/ Santa Photos, G1</i> | DECEMBER 17 9:30AM: Quilting, FC 10AM: Hula, G1 12PM: 'Ukulele, HH 1PM: Lauhala, C2 6PM: Waipuna, G1 | DECEMBER 18 12PM: Ho'okani Pila, HH 1PM: Lauhala, C2 4PM: Hula, G1 6PM: Malu, G1 6-8PM: <i>Santa Photos, G1</i> | DECEMBER 19 12PM: 'Ukulele, HH 1PM: Lauhala, C2 6PM: Kūpaoa, G1 | DECEMBER 20 10AM: Hula, G1 12PM: 'Ukulele, HH 1PM: Lei Making, C2 2PM: <i>Santa's Hale, A2</i> 6PM: 'Ekolu Mākou, G1 | DECEMBER 21 1PM: Lei Making, C2 4PM: <i>CORC Church, G1</i> 6PM: Hālau Hulo 'O Kawaiho'omalua, G1 |
| | DECEMBER 23 10AM: Hula, G1 1PM: Lei Making, C2 3:30PM: Keiki Hula, G1 6-8PM: <i>Kawika Trask/ Santa Photos, G1</i> | DECEMBER 24 9:30AM: Quilting, FC 10AM: Hula, G1 12PM: 'Ukulele, HH 1PM: Lauhala, C2 6PM: Pu'uhonua, G1 8-10PM: <i>Santa Photos, G1</i> | DECEMBER 25 <i>Merry Christmas!</i> <i>All cultural lessons and entertainment cancelled</i> | DECEMBER 26 12PM: 'Ukulele, HH 1PM: Lauhala, C2 6PM: Kūpaoa, G1 | DECEMBER 27 10AM: Hula, G1 12PM: 'Ukulele, HH 1PM: Lei Making, C2 6PM: 'Ekolu Mākou, G1 | DECEMBER 28 1PM: Lei Making, C2 6PM: Hālau Hulo 'O Kawaiho'omalua, G1 |
| | DECEMBER 30 10AM: Hula, G1 1PM: Lei Making, C2 3:30PM: Keiki Hula, G1 | DECEMBER 31 9:30AM: Quilting, FC 10AM: Hula, G1 12PM: 'Ukulele, HH 1PM: Lauhala, C2 | JANUARY 1 <i>Fukubukuro</i> 9:30AM: Kenny Endo Taiko Drums, G1 <i>All cultural lessons cancelled</i> | | | LOCAL INFORMATION C2: Bldg. C, 2nd floor FC: Bldg. B, 2nd floor G1: The Grove Stage HH: Helumoa Hale For more information, call Helumoa Hale Guest Services, 808.922.2299 |

The Royal Grove is an open air venue subject to inclement weather. All activities, events and performances are subject to change without notice. Contact Helumoa Hale Guest Services at 808.922.2299 for the latest information. Standard parking rates apply.

W
WOLFGANG
STEAKHOUSES

Happy
Holidays from
All of Us at
Wolfgang's
Steakhouse!

Celebrate the Season... Deliciously!



MELE KALIKIMAKA
December 24 & 25
11 a.m.-Midnight
Caesar Salad
22-24 oz. Prime Rib
Mashed Potatoes
Creamed Spinach
\$79.95
REGULAR MENU ALSO
AVAILABLE.

HAPPY NEW YEAR
Thursday, December 31st
11 a.m.-1 a.m.
Wolfgang's Famous
Surf 'n Turf
&
Champagne Toast
\$89.95
REGULAR MENU
ALSO AVAILABLE.



*The most popular gift under the tree...
The Wolfgang's Steakhouse Gift Card.*

ROYAL HAWAIIAN CENTER, BLDG C, LEVEL 3 • VALIDATED PARKING
LUNCH | DINNER TIL MIDNIGHT | WEEKEND BRUNCH | HAPPY HOUR | TWO PRIVATE ROOMS
OPENTABLE.COM • WOLFGANGSSTEAKHOUSE.NET • 808.922.3600



Top of Waikiki

Revolving Restaurant

Stay on Top of the Holidays!

Unwrap Your Holiday Dinner - 12/25

Join us this holiday season at Top of Waikiki for our a la carte specials



Prime Rib - \$47

Prime rib served with mashed potatoes, broccolini, au jus, and a side of horseradish cream



Eggnog Crème Brûlée - \$10

Eggnog crème brûlée topped with candied cranberries, served with a gingerbread biscotti drizzled with cranberry and white chocolate

Plus a Little Holiday Cheers

Available now through 12/31

Let's Get Apple-Sauced \$15

Housemade Apple Cider, Jim Beam Bourbon, Allspice Dram, Lemon Juice, Whipped Cream

Naughty or Spice - \$15

Flor de Cana Gold 4 yr Rum, Hiram Walker Crème de Menthe Green, St Elizabeth Allspice Dram, Tempus Fugit Cacao, Xocolatl Mole Bitter

End the Year on Top - 12/31

Ring in the new year with a \$95 four-course prix fixe menu
*Our regular dinner menu and happy hour will not be available on 12/31



Pan-Seared Diver Scallop with Sweet Corn Purée

Pan-seared diver scallop over local sweet corn purée, topped with a sea asparagus and sweet corn relish, chili oil, and Hale Ka'a micro greens

King Crab-Crusted Monchong

Alaskan king crab-crusted monchong in a laksa broth served with a mushroom and eggplant relish

Braised Short Rib with Mushroom Peanut Risotto

Vietnamese-inspired braised short rib over a mushroom peanut risotto, topped with pickled daikon, carrots, and water chestnuts

Jasmine Tea Panna Cotta

Jasmine tea panna cotta with mint-infused tapioca pearls, puffed Jasmine rice, lemon coral tuile, topped with fresh strawberries and mint



RUMFIRE AND SHERATON WAIKIKI PREPARING TO WELCOME 2020 WITH RIO CARNIVAL AND HEADLINER HALIENE

RumFire at the Sheraton Waikiki is giving revelers an early taste of the Rio Carnival this New Year's Eve, transforming the hotel's entire oceanfront space into a celebration reminiscent of the famed Sambadrome in Rio de Janeiro. The Rio Carnival New Year's Eve extravaganza gets underway at 8:30 p.m. on Tuesday, December 31 and will continue into the first two hours of 2020 on Wednesday, January 1, pausing only for the fireworks spectacular at midnight.

Waikiki's version of the Rio Carnival will span over 22,000 sq. feet of space and the entire oceanfront length of the resort from the Helumoa Pool deck on the Diamond Head side to The Edge of Waikiki on the west side of the property. The world-famous Infinity Edge Pool, which was also voted the hotel pool in the nation for the second straight year by readers of *USA Today* in its 10Best contest, sits in the middle and is considered the "center stage" of the celebration.

Partygoers who are at least 21 years of age will enter the electric atmosphere, amid extravagant décor, live entertainment and a state-of-the-art sound and lighting set with Diamond Head and Waikiki Beach providing a spectacular backdrop. The headliner is popular singer-songwriter Haliene, who along with DJ Paul Brandon, DJ XL, DJ Jimmy Taco and DJ Jem, will set the mood playing the most infectious dance music the world has to offer, keeping the party going well into the morning. The emcees for the evening are the energetic tandem of Chris "Steezy" Stilez of 102.7FM "Da Bomb" and Kelly Simek of KHON2.

Tickets are currently on sale at [Honolulu Box Office](#), or at www.rumfirewaikiki.com under the "Special Events" tab. General admission tickets include entry into the party and party favors. Pre-sale tickets are now available for \$110 per person until December 14; from December 15, ticket prices go to \$135 per person. At the door on New Year's Eve, the cost is \$150 per person.

Those who'd like to elevate their experience are invited to get tickets to the Champagne Room, where guests will receive a welcome glass of champagne, passed hors d'oeuvres for the first hour, a dedicated bar and reserved area for fireworks viewing. Ticket prices for the Champagne Room are \$250 per person until December 14; \$280 per person after December 15. A variety of reserved tables and exclusive packages are available between \$1,200 and \$10,000. VIP tables and cabanas come with expedited entry, reserved seating in VIP areas, prime fireworks viewing areas and bottle service. For reservations or inquiries, e-mail RumFireVIP@sheraton.com.

###



HOLIDAY MELE 2019 NIGHTLY SHOWCASE

December 19-25, 6-7pm
Waikiki Beach Walk® Plaza

THURSDAY, DEC 19

Hālau Hula O Nawahine

Director & kumu, Nawahine Kuraoka brings prestige and honor to Waikiki Beach Walk® with her presentation of traditional and classic hula from the East side of Oahu.

FRIDAY, DEC 20

Kahale I O Kahala

A renown kumu hula, Leimomi Maldonado brings the joy of holiday cheer with the joy of children, families, and our elders in this “heartfelt” performance. A delight!

SATURDAY, DEC 21

The Ladies of Hālau Ke Ali’i O Ka Malu

Award Winning School of Hula! – director & kumu, Derek Nu’uhiwa brings the love and warmth of our people from the West side of Wai’ānae. A family affair!

SUNDAY, DEC 22

Hālau ‘Olapakūikala’i ‘O Hōkūaulani

Award Winning School of Hula! – director & kumu, Hokuaulani Nihipali, is a young, notable hula teacher with a lively, vigorous school of hula dancers! A great treat!

MONDAY, DEC 23

Hālau ‘Olapakūikala’i ‘O Hōkūaulani

A wonderful and vibrant traditional hula by renown director & kumu, Sallie Kauakea Yoza. From keiki (children) to kūpuna (adults) you will be mesmerized by the beauty of the Hawaiian dance and song in the spirit of Christmas.

TUESDAY, DEC 24

Kamanawa – Christmas CD Release

An amazing Hawaiian/Contemporary duo with beautiful vocals and solid musicianship. A must see on Christmas Eve! Featuring hula maidens of O’ahu.

WEDNESDAY, DEC 25

“Kualoa” Hawaiian Musical Group

Featuring Derrick Lee. One of Honolulu’s most talented guitarists and vocalists with a wide range of musical genres that will take you to “then and now” with heart throbbing beats of cheer on Christmas night!



WAIKIKI
BEACH WALK®



Halekulani Bakery & Restaurant at Halepuna Waikiki is now open! The bakery features a range of fresh baked artisan breads, pastries, cakes, and coffees. A chocolate-viewing kitchen will allow guests to observe the delicacies being made daily, including Halekulani's signature *dragees*, the classic chocolate macadamia nut pearls. The all-day dining restaurant will focus on locally sourced ingredients in a relaxed setting. In addition to indoor seating, outdoor lanai seating is available for those who prefer to "grab and go." Halekulani Bakery & Restaurant is located across the street from Halekulani on Kalia Road.

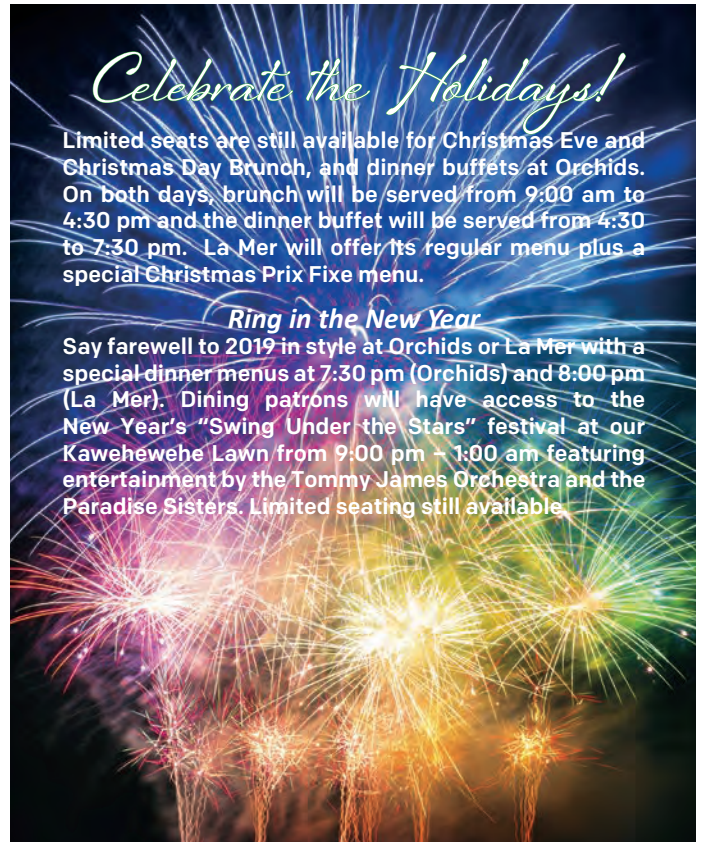
WINE BAR
CATTLEYA
AT ORCHIDS

Wineview At Cattleya

Join us for an informal and informative tasting with conversation by a visiting Wine Maker, resident Wine Professional, and / or notable Industry Expert. (Guests may arrive and join the conversation at any time between 4:30 and 7:30 pm). \$69 per person accompanied with light bites provided by Orchids Chef de Cuisine. Reservations are recommended.

Thursday, December 5: "Gaja!" – Join Lisa Memering and Paul Ajifu, wine specialists for Johnson Brothers Hawaii for conversation and tasting of iconic Italian wines from the Terlato Portfolio, including benchmark wines from GAJA, one of the greatest wine estates in the world.

Thursday, December 19: Holiday Bubbles - Join Brian Bittner – wine specialist for *The Estates Group* - for a conversation and tasting of sparkling wines from the *Champagne Taittinger* Family. From prestigious Grand Cru vineyards in the Côtes de Blanc and Montagne de Reims regions of Champagne to the pristine vineyards of Domaine Carneros in California, explore terroir driven wines perfected by masters of their craft.



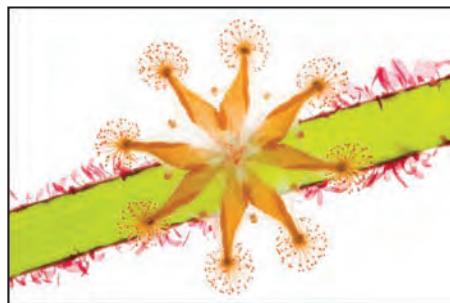
Monthly Living Well Lecture

December: Ultimate Vitality: Living the Best Version of Yourself
Saturday, December 7, at 9:00 am in the Conference Room

Feel empowered to make simple changes in your lifestyle and enjoy living in optimal health. Facilitated by SpaHalekulani Wellness Coach, Ms. Kamala Skipper, CHHC. Presentation starts at 9:00 am and will be followed by a "bonus round" workshop empowering participants to apply the information into everyday life. Lectures are \$25 per person and include complimentary valet parking.

HALEKULANI GALLERY – SPINELESS
November 25, 2019 – January 2020

The Halekulani Gallery will feature stunning images by acclaimed photographer Susan Middleton, who specializes in the portraiture of rare and endangered species, and whose most recent work reveals marine invertebrates that are usually hidden below the ocean's surface.

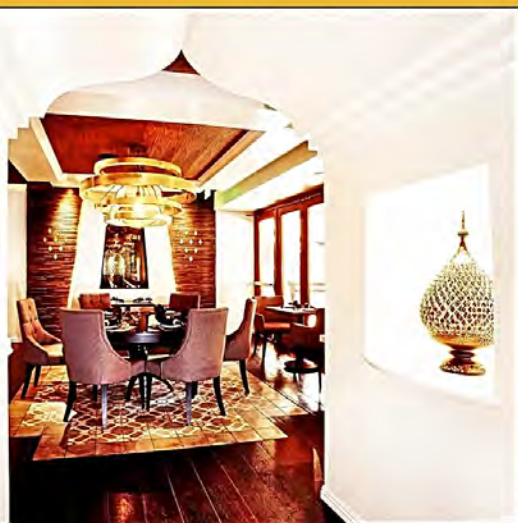


Noi
THAI
CUISINE

RESTAURANT HOURS:
Lunch 11:00 a.m. - 3:00 p.m.
Happy Hour 3:00 - 6:00 p.m.
Dinner 5:00 - 10:00 p.m.

Make Your Holidays A Royal Experience

Let us make your holidays extra special with award-winning Thai cuisine, a beautiful atmosphere, and excellent service. Whether an intimate meal for two, a gala celebration for up to 150, and everything in between, Noi Thai Cuisine will make it the best memory of the holidays.



BLACK
FRIDAY
11.29.19

FREE \$25 GIFT CERTIFICATE
WHEN YOU PURCHASE
\$100 IN GIFT CARDS

OFFER GOOD
11.29.19 - 12.31.19



Royal Hawaiian Center • Bldg. C, Level 3 (above Cheesecake Factory)
FREE VALIDATED PARKING FOR 2 HOURS
www.noithaicuisine.com • 808.664.4039



WHAT'S HAPPENING AT HYATT REGENCY WAIKIKI BEACH RESORT & SPA AND PUALEILANI ATRIUM SHOPS

Iolani Gingerbread Palace: Hyatt Regency Waikiki Beach Resort and Spa and Pualeilani Atrium Shops unveils a giant gingerbread house of Iolani Palace. The gingerbread palace measures at 7-feet tall and 11-feet wide, and pays homage to the rulers of the Kingdom of Hawai'i. The photo worthy structure will be on display in the lobby of Hyatt Regency Waikiki through December 31. Stop by to capture the perfect Instagram shot for Christmas!

Catherine Michiels Jewelry: Fine custom jewelry, Catherine's creations transcend both jewelry and art. They carry a spiritual consciousness shared by those who wear them. Catherine Michiels Jewelry opened just in time for the holidays at the [Pualeilani Atrium Shops](#) at the Hyatt Regency Waikiki. The shop is located on the 1st floor, Diamond Head Tower.

The Buffet at Hyatt: Wind down your week, jump start your weekend or enjoy a night out in Waikīkī at The Buffet at Hyatt. From 6:00 to 8:00 p.m., Thursday through Sunday, soak up the soothing sounds of local entertainment while you devour a hearty spread of seafood, Hawaiian specialties and extravagant desserts. The Buffet at Hyatt is located on the 3rd floor, Diamond Head Tower.

Christmas Feast To Go: The Hyatt Regency Waikiki Beach Resort & Spa is extending its *Feast To Go!* For those too busy to prepare a meal this Christmas season, let us do the cooking. Choose from three different main entrée items, which include roasted rosemary-garlic butter rubbed turkey, roasted spiral sliced maple glazed bone-in ham or certified angus beef ribeye roast. Each item comes chilled with reheating instructions. Make it a meal and it comes with sides and sauces. Phone orders are welcomed until December 23. For more information or to place an order for a Christmas feast, call (808) 528-6060 or visit our website at www.HyattRegencyWaikiki.com under Dining.

Christmas Buffet at The Buffet at Hyatt: Can't decide on a Christmas dinner menu? Indulge on a flavorful feast from kiawe smoked slow roast prime rib to roast leg of lamb to seafood galore, The Buffet at Hyatt got you covered on Christmas Eve and Christmas Day. The special dinner buffet is \$89 per person, \$33 for *keiki* 6 through 12 years old and under 5 eat free, plus *kama'āina* are \$66.75 per person. Dinner hours on December 24 are from 4:30 to 9:30 p.m., and 2:30 to 9:30 p.m. on December 25. Make your reservations today by calling (808) 237-6395 or online at [OpenTable](#).

Nā Ho'ōla Spa: Prepare your body and mind for the holiday rush with a *Treasure of the Sea* treatment. From now through December 20, book one *Treasure of the Sea* and get the second treatment at 50% off! Relax with oligomer massage concentrate for deeper relaxation and wellness. Plus, top off your entire treatment with a scalp massage. *Treasure of the Sea* is regularly priced at \$180 for 50 minutes and \$240 for 80 minutes. To make a reservation online, visit www.nahoolaspawaikiki.com/menu/promotion/#special.

Pamper yourself or give the gift of relaxation and head on down to Nā Ho'ōla Spa at the Hyatt Regency Waikiki Beach Resort and Spa. Rejuvenate your body, mind and soul. To book a treatment, call (808) 237-6330 or visit www.nahoolaspawaikiki.com. The spa boutique is running a promotional sale for yoga wear, spa products and specialty items, just in time for holiday gift giving.

Ho'okela: Hyatt Regency Waikiki Beach Resort & Spa's Hawaiian Culture Center, Ho'okela is filled with Hawai'i's rich history in the form of photographs, instruments, books and more. Stop by for lei making, 'ukulele and hula lessons or talk story with professional Hawaiian music performer, songwriter and recording artist Ku'uipo Kumukahi. Ho'okela is open Monday through Thursday from 10:30 a.m. to 2:30 p.m. and Fridays from noon to 4:00 p.m. and is located on the 2nd floor, Diamond Head Tower.

MOANA SURFRIDER
A WESTIN RESORT & SPA
WAIKIKI BEACH

**MOANA SURFRIDER, A WESTIN RESORT & SPA TO EMBARK ON
GLOBAL JOURNEY TO WELCOME 2020**

New Year's Eve celebration will honor the multi-cultural melting pot of Hawai'i



The [Moana Surfrider, A Westin Resort & Spa](#) is taking guests around the world to welcome the new decade. The “Around the World” New Year’s Eve extravaganza is set for Tuesday, December 31 at 8 p.m. at the First Lady of Waikiki. The festivities get started with a variety of multi-cultural performances, culminating in a spectacular fireworks show off Waikīkī Beach at midnight and into 2020.

The Moana’s Banyan Courtyard serves as centerstage for the exciting night with music by DJ Baby G all night, cultural performances every hour such as lion dances, Polynesian dances, taiko drummers, as well as costumed characters in cultural outfits. Young guests will delight in activities such as face painting, balloon animal and caricature artists. There’ll also be photo booths for families to remember the occasion. At the Beach Bar near the center of the action, a limited food menu and full bar menu will be available for purchase.

Revelers are invited to add some panache to the festivities with a VIP table and/or cabana, which provide the ultimate New Year’s Eve experience with your own reserved area, lavish décor and cabanas offering the best direct view of the fireworks spectacular. All packages include a bottle of premium champagne, while the cabana packages also include bottle service, valet parking, and a Chef-prepared multi-course meal of international flavors served at the cabana. VIP Package inquiries can be directed to Mengna Jiang at Mengna.Jiang@marriott.com or at (808) 924-4778.

General Admission tickets include entry to the party, all entertainment and activities, plus party favors. General Admission tickets can be bought for just \$100 per adult and \$50 for children ages 5 to 12 before December 15. On December 15, the price goes to \$125 for adults and \$75 for kids between the ages of 5 and 12. Infants 4 years and younger may enter the party with a paying adult. A box-office fee at Hawaii State tax will be charged separately at checkout; ticket sales are final and non-refundable. Purchase tickets online at [Honolulu Box Office](#).

12-07-2019



\$1 HONOLULU MARATHON CARB LOAD

Garlic Fried Rice Carb Load Lunch open to anyone - No minimum order required - No substitutions - Dine-in only - No takeout

LUNCH

ALL DECEMBER LONG

XXXXMAS

Book a party of 6 qualifying adults and receive one complimentary bottle of champagne all month long. Every 6th qualifying* guest gets you a bottle of bubbly. * qualifying adult must purchase one entree and be 21 years of age with valid ID.*

DINNER

01-01-2020

KAMPAI

Celebrate the New Year in Furumai Sake tradition.

Every qualifying adult will receive one complimentary shot of sake. Cheers to new beginnings with half-off champagne. * qualifying adult must purchase one entree and be 21 years of age with valid ID.*

ROCKY JAPANESE STEAK
TEPPAN RESTAURANT

Hilton Hawaiian Village | 2005 Kalia Road | Waikiki

4 Hr Free Parking | Happy Hr 5-7pm, Daily

#RockyTeppanyaki



Open on New Year's Eve 'til 2:00 a.m.
After enjoying the fireworks on Waikiki Beach,
stop by for a delicious way to welcome in 2020!

IL LUPINO
TRATTORIA & WINE BAR

All of us at Il Lupino wish you a wonderful holiday season filled with family and friends, laughter, and peace - and, of course, delicious food!

Please call us at 922-3400 to book your holiday party, family celebration, or just a get-together over brunch or lunch with friends.

Mahalo for your patronage throughout the year and have a happy, healthy and delicious Christmas, New Year's Eve and 2020!

Breakfast
Lunch
Happy Hour
Dinner
Late Night

Royal Hawaiian Center
808.922.3400
illupino.com
@illupino • #illupino

2 hours free
validated parking



DECEMBER 2019

Hilton Waikiki Beach · Dining & Events



DEC
1-31

Season's Eatings & Drinkings
All Day, M.A.C. 24/7 &
1pm-12am, LBLE Lounge
It's a Merry Berry Marsh-
mallow World! Try our famous
pancakes trimmed with fresh
berries tossed in a light ginger
syrup, toasted marshmallows
& chocolate chips. Get extra-
festive & pair it with a holiday
libation. [See Specials](#)



DEC
6-8

Pearl Harbor Day Weekend
Military Appreciation
All Day, M.A.C. 24/7
In honor of our men and women
in uniform, this Pearl Harbor Day
weekend all Military Personnel
will receive a special discount
of 20% Off Food* at M.A.C. 24/7.
Mahalo for your service!
*With valid military ID, does not
include alcohol or gratuity.



DEC
31

Ring in the New Year
5pm-9pm, M.A.C. 24/7
Make your last supper of 2019
an indulgent 3-Course Prix Fixe
Dinner at M.A.C. 24/7, just \$49
per person. Up early the first
of the year? Start 2020 right
with a hearty New Year's Day
Breakfast Buffet, 7am-1pm.
Reservations recommended,
call 808-921-5564. [See Menu](#)

DEC
25

Christmas Prime Rib Buffets @ M.A.C. 24/7
Brunch 8:00am-2:00pm [View Menu](#)
Adults \$56, Keiki 5-12yrs \$28, 4yrs & under FREE
Dinner 4:00pm-8:00pm [View Menu](#)
Adults \$58, Keiki 5-12yrs \$29, 4yrs & under FREE

Dig in to a Holiday Feast of over 20 mouthwatering Holiday classics & M.A.C. favorites the whole family will love— Carved honey baked ham, eggs benedict, lobster mac & cheese, porcini crusted snapper, garlic mashed potatoes, warm bread pudding, our famous Mini M.A.C. Daddy pancake station & more!



ONGOING EVENTS



LIVE MUSIC @
LBLE Lounge (Lobby)
Nightly 7PM-10PM
SUN kristi masuhara
MON sean cleland
TUE lina
WED dave turner
THU & FRI sunway
SAT tahiti rey

4 HAPPY HOURS...
one VERY Happy Hotel
HANG 10 Pool Bar 12pm-2pm
M.A.C. 24/7 2pm-5pm
LBLE Lounge 5pm-7pm
M.A.C. 24/7 12am-3am*

(*excludes Friday & Saturday nights/
Saturday & Sunday mornings)





Celebrate
Christmas with
a flavorful feast.
**The Buffet
at Hyatt.**

THE BUFFET AT HYATT

Christmas Buffet

CHRISTMAS EVE, DECEMBER 24th
from 4:30 PM-9:30 PM, and
CHRISTMAS DAY, DECEMBER 25th
from 2:30 PM-9:30 PM

| | | |
|--------------------------|--------------------------|-------------------------------------|
| \$89⁰⁰ | \$66⁷⁵ | \$33⁰⁰ |
| PER PERSON | KAMA'ĀINA | KEIKI 6-12 YEARS, 5 & UNDER FREE |

For reservations call 808 237 6395
or email diningwaikiki@hyatt.com

PARKING IS COMPLIMENTARY

**Feast
To Go**

from The Buffet at Hyatt®

COMPLETE HOLIDAY MEAL
or A LA CARTE OPTIONS
SAVORY HAM FOR
UP TO 6 OR 10 FROM

\$135⁰⁰

Order today call 808 528 6060
or visit HyattRegencyWaikiki.com,
dining page



VIEW MENU



INTERNATIONAL MARKET PLACE WELCOMES MCM WORLDWIDE

Hawaii Flagship Dazzles with Luxury Accessories and Fashion



International Market Place has welcomed [MCM Worldwide](#), the luxury accessories and fashion brand to its first retail location in Hawaii. The new, 2,063 square-foot store is at the heart of the International Market Place in Waikiki.

The store opened with a traditional Hawaiian blessing, welcoming residents and visitors from the U.S. and international markets. Shoppers marveled at the full line of luxury goods, including MCM's highly recognizable handbags, travel bags, luggage, gifts, ready-to-wear fashion and accessories.

The International Market Place store carries exclusive-to-Hawaii products including an MCM/Hawaii Backpack, MCM/Hawaii Shopper, and MCM/Hawaii Belt Bag, all in the highly popular Cognac Visetos design, which represents the essence of modern luxury travel.

Located on Level One adjacent to the Banyan Court, the store's traditional brass façade designed by Kenneth Park, derives from the signature studs and gems on MCM merchandise, bringing flare to Waikiki while still utilizing the brand's heritage in a luxurious tropical style. This design element is especially highlighted by the brass facets on the upper portion of the storefront, mirroring the classic design of the quintessential MCM logo plate. Flanking the façade is a large LED display with dynamic ever-changing imagery.

"MCM Hawaii's flagship location brings the brand's luxury German heritage, innovative design, thoughtful architecture and cutting-edge technology to one of the most iconic shopping destinations in the world – Waikiki Beach," says Patrick Valeo, President, MCM, the Americas. "We are so excited to be in Hawaii – the 50th state and the 'Crossroads of the Pacific,' as we continue our aggressive U.S. expansion."



Holiday Mele

Plaza, December 19-25, 6-7pm

ENTERTAINMENT & ACTIVITIES **DECEMBER 2019**



WAIKIKI
BEACH WALK

FREE Ukulele Lessons!

Daily, 10:30am & 4:30pm

Presented by The Ukulele Store. Information, Sign-up & Lessons:
2nd floor, Suite 218 or call 888-5469

Quilting Class

10:30am-12:30pm – Tuesdays

Presented by Hawaiian Quilt Collection.
Sign-up & Class: 2nd floor, Suite 221. Phone: 924-9889

Ku Ha'aheo: Hawaiian Music & Hula

Plaza Stage, 4:30-6pm – Tuesdays

Hoopdance Fitness

Plaza, 5pm – December 7, 14, 21 & 28

Contact Sirkka Aho to sign up: www.facebook.com/twirlinghoopgirls
or call 349-5936.

*Dates, times, performances and activities are subject to change
without notice – weather permitting.*

Market on the Lawn

Plaza, 4-8pm

Wednesday: December 4, 11 & 18

Thursday: December 5, 12 & 26

Sunday: December 1, 8, 15 & 29

Featuring grown, made or manufactured products of Hawaii.

'Ohe Kāpala: The Art of Hawaiian Stamping

Plaza, Mondays, 4-5pm

Class Registration: (808) 664-0102

Ka Lei Hula: The Art of Hawaiian Dance

Plaza, Fridays, 4-5pm

Class Registration: (808) 664-0102

Holiday Mele

Plaza, 6-7pm – December 19-25

Enjoy holiday entertainment all week long!

W A I K I K I T O Y J A M

DONATE A NEW, UNWRAPPED TOY BETWEEN NOVEMBER 29
& DECEMBER 22 TO RECEIVE EXCLUSIVE DISCOUNTS &
PROMOTIONS AT PARTICIPATING RESTAURANTS & RETAILERS IN
THE WAIKIKI BUSINESS PLAZA & WAIKIKI SHOPPING PLAZA.
FOR DETAILS, VISIT WAIKIKISHOPPINGPLAZA.COM/TOYJAM
NEED A TOY? VISIT ABC STORES!




BÚHO

Sky WAIKIKI
RESTAURANT

RHC
HAWAII

A|X
ARMANI EXCHANGE

 **TANAKA of tokyo**

Gold N Gifts

PIPELINE LEATHER

Maxi


Top of Waikiki
Revolving Restaurant

WAHING
JEWELRY & ARTS


UNIBAZAR
HONOLULU

Crave

THE HUNGER FOR ADVENTURE
BEGINS HERE

Taste and discover the very best Waikiki has to offer with award-winning restaurants, one-of-a-kind boutique shops, free weekly classes, activities and cultural performances.



Located on Lewers Street between Kalakaua Avenue & Kalia Road
Open 365 Days | 10AM-10PM

WAIKIKIBEACHWALK.COM |   


WAIKIKI
BEACH WALK.

Island Vintage Wine Bar

10AM - 10PM

SMALL PLATES

Nori Chips

Crispy Nori with Vegan Truffle Aioli. 9

Crispy Purple Sweet Potatoes

Aged Cheddar and Smoked Aioli. 10

Smoked Ahi Dip

Pickled Balsamic-Onions and Crisps. 10

Truffle Mac and Cheese

Fusilli, Truffle, and Cheese. 12

Panko-Crusted Mozzarella (3 Pieces) 9

Poke Bites (3 Pieces)

Spicy Ahi Poke and Nori Chips. 9

Poke Dip

Spicy Ahi Poke with Puffed Black Sesame Crisps. 10

Poke Bento Box

Spicy Ahi Poke and Avocado on Rice. 12

Ask us about suggested wine pairings.

Wines by the ounce, glass or bottle!

PLATES

Arugula-Peach Salad

Arugula, Peaches, Strawberries, and Pistachios with French Feta and a Balsamic Vinaigrette. 15

Wagyu Burger

House-made Wagyu beef patty with Wasabi Aioli, Lettuce, Tomatoes, Pickles, and Grilled Onions. 18

Pork

Koji Smoked Pork Belly, Sweet Potatoes, Garlic Rice, and House-made Pickled Vegetables. 19

Braised Beef

Mushrooms and Asparagus. 26

Poke Salad

Yuzu-Sesame Dressing. 18

Ahi Burger

Grilled ahi filet, Tomatoes, Bok Choy Coleslaw, and Wasabi Aioli. 16

Steamed Clams

Steamed fresh Kehole clams in white wine garlic broth. 22

Seafood Platter

Island fish, Kehole clam, Kaua'i shrimp, house-made tomato wine sauce. 29

Seared Salmon Belly

Fresh Yuzu and Sweet Onion Salad. 21

Open Everyday & 2 Hours Free Parking!

Make someone happy with an IWB gift card!

CHEESE/CHARCUTERIE

Caprese

Fresh Mozzarella, Tomato, Basil, Olives, Pesto 18

Burrata

Prosciutto de Parma, Honey-Cream Pineapple, Arugula, and Balsamic Pearls 24

Cheese Plate 24

Charcuterie 24

Prosciutto

Papaya, Parmesan, Arugula 18

Check out our menus online.

HAPPY HOLIDAYS FROM ISLAND VINTAGE WINE BAR

Excellent Wine List
Delicious Fresh Food
Friendly Hospitality

LOCATION:

Royal Hawaiian Center
Bldg C, Level 2
next to Island Vintage Coffee

HOURS:

Breakfast
7:30am-3:00pm

Happy Hour
3:00pm-6:00pm

Lunch/Dinner Menu
10:00am-10:00pm

RESERVATIONS:
808.799.9463 (WINE)

islandvintagewinebar.com

NOTE: Consuming raw or undercooked meat, poultry, seafood, shellfish, or eggs may increase your risk of foodborne illness. Many of our items contain WHEAT, SOY, EGGS, MILK, TREE NUTS, PEANUTS, FISH, or SHELLFISH and are prepared with shared equipment. Please alert your server of special dietary restrictions. Mahalo!



Take a Step-Up & Save

SHOP & SAVE MORE ON THE WAIKIKI BEACH WALK® SECOND FLOOR

See the Discounts & Offers!

- **Cheeseburger Beachwalk** – One Free Side of Onion Rings. One per table with minimum order of one entree.
- **Noa Noa** – 10% Off of One Regular Priced Item. Not combinable with other discounts, offers, or promotions.
- **Ruth's Chris Steak House** – Complimentary Appetizer with the Purchase of Two Entrees. Limit one per table. (Appetizer value up to \$20)
- **Spa Royal Hawaiian** – Receive 10% Off Any Massage Treatment
- **The Ukulele Store** – Free Ukulele Store Sticker. Limit one per person.
- **Under the Koa Tree** – Select One Free Hawaiian Decal/Sticker (\$4 value) with Any Purchase of \$20 or More (before tax). Limit one per customer per day.
- **Waikiki Beach Walk®** – Free Hawaiian Music CD. Present this coupon to any of our participating SECOND FLOOR retail shops and receive a FREE Waikiki Beach Walk® Hawaiian Music CD. Limit one per person.

All offers and discounts expire on July 31, 2020.



WAIKIKI
BEACH WALK.

Located on Lewers Street between Kalakaua Avenue & Kalia Road | Open 365 Days | 10AM-10PM

WAIKIKIBEACHWALK.COM |   



2020
New Years Eve

MASQUERADE PARTY
DECEMBER 31, 2019



Sky W A I K I K I
R O O F T O P

**Out with the old,
in with the new!**

Unveil 2020 in sexy, seductive style at SKY Waikiki's New Year's Eve Masquerade Party! Hawaii's #1 view of the Waikiki fireworks with sounds by guest DJ William Lifestyle & DJ Toma. Come in your best cocktail fashionable attire and mask to ring in the new year!

Celebration Tickets include a hosted food menu and hosted bar featuring Ketel One Vodka cocktails and Veuve Clicquot Brut Champagne, plus draft beer, well spirits, house wines, and soft drinks until 11pm.

VIP Table Reservations include the same hosted bar as Celebration Tickets, plus a premium pre-set menu and bottle service package delivered to your table!

Validated parking available.
Masks highly recommended.
Tickets and VIP Table Reservations:
skywaikiki.com | (808) 979-7590
tinyurl.com/skynye2020

2270 Kalakaua Avenue 19th floor Honolulu, HI 96815
skywaikiki.com | 808.979.7590



Aloha Kakou!

We're open every day so please join us throughout the holiday season for our famous farm-to-table, all-day casual dining and warm hospitality.



bills hawaii management team - (front row) nami, shay, mark; (back row) susumu, joy, mario; (missing) webster and noriko



Happy Holidays from All of Us at bills!



Kama'aina Special

Local residents receive 20% off on food* and 2 hours of free parking with valid photo i.d.

*happy hour menu not included



bills hawaii
280 beachwalk

breakfast 7-11am
lunch 11am-5pm
happy hour 3-6pm
dinner 5-10pm

billshawaii.com
808.922.1500



Hilton Hawaiian Village Rings in the New Year with Party on the Great Lawn

New Year's Eve events include a multi-course dinner, fireworks and entertainment in addition to special menus at the resort's signature restaurants

Guests and locals alike are invited to make a toast at [Hilton Hawaiian Village Waikiki Beach Resort](#) on New Year's Eve with the hotel's dinner show and a festive list of dining experiences. Hilton Hawaiian Village's New Year's Eve Gala will take place on the Great Lawn with live entertainment by Blayne Asing, Honoka and Manoa DNA. A luscious multi-course dinner menu, and an amazing fireworks finale will make it a night to remember. Additionally, the Waikiki Starlight Luau will feature musical performances and cultural activities at their famous buffet and show, while special menus at Bali Steak & Seafood, Rainbow Lanai and Tropics Bar & Grill will provide a fresh and delicious start to 2020.

New Year's Eve Gala Dinner Show

Dec. 31, 2019 | 7-11 p.m. | Great Lawn

Tickets: Adult General Seating \$300 | Adult Premium Seating \$450 | Child \$250 (5-11 years; 4 years and under are free)

Schedule:

- 7 p.m. Doors open
- 7:30 p.m. Dinner Starts
- 7:30 p.m. – 8:30 p.m. Blayne Asing
- 8:45 p.m. – 9:45 p.m. Honoka and Band
- 9:45 p.m. – 11 p.m. Manoa DNA
- 11 p.m. – Fireworks

General Seating Four-Course Dinner Menu

- Furikake Crusted Seared Ahi
- Mari's Gardens baby greens salad with poached shrimp
- Char grilled angus beef tenderloin and poached Keahole lobster tail
- Raspberry sacher torte

General seating includes four-course dinner and three complimentary drinks.

Premium Seating Seven-Course Dinner Menu

- Chilled Maris king crab and caviar
- Furikake crusted seared ahi
- Mari's Gardens baby greens salad with poached shrimp
- Char grilled angus beef tenderloin and poached Keahole lobster tail
- Maui Surfing Goat cheese
- Raspberry sachertorte
- Petit fours

Premium seating includes front and center seating, seven-course dinner, and five complimentary drinks.

For tickets, visit Showclix.com/event/nye2019gala

Waikiki Starlight Luau New Year's Eve Dinner Buffet

Dec. 31, 2019 | 5 p.m. | Rooftop of the Mid-Pacific Conference Center

General seating: Adult \$175 | Child \$140 (4-11)

To purchase tickets, please visit HHVLuau.com or call (808) 941-5828. Menu highlights include:

Carving Station

- Slow roasted, dry-aged prime rib

Hot Selections

- BBQ Brisket
- Imu-style kalua pig
- Teriyaki grilled chicken
- Island catch
- Stir fry vegetables with tofu

Cold Selections

- Spicy au poke
- Futomaki sushi
- Lomi salmon
- Poi
- Salad Bar

Desserts

- Mini pumpkin pies
- Chocolate macadamia nut bars
- Pineapple crisp

The luau will also feature a kids' buffet with teriyaki chicken, guava BBQ meatballs, island greens, tater tots, corn cobbettes and fruit salad. For the full menu visit this [link](#).

Bali Steak & Seafood Four-Course Prix Fixe New Year's Eve Dinner

Dec. 31, 2019 | 5:30-9 p.m. | \$175 per person

For reservations, please visit BaliWaikiki.com or call (808) 949-4321 ext. 39 Menu highlights include:

Amuse

- **Kamuella cucumber chip**
Poached Kauai prawn, tomato ogo relish

Appetizers (select one)

- **Charred octopus**
Oven roasted tomatoes, kalamata olives, chimichurri
- **Ahi Sampler**
Ahi sashimi, Poke, tartare bomb
- **Seared Hokkaido Scallops**
Carrot ginger emulsion, tarragon lemon crème, jicama salad
- **Seafood tower for one (\$20)**
Maine lobster, king crab, kusshi oysters, clams, prawns

Salads and Soups (select one)

- **Heirloom tomato and burrata salad**
Pesto, white truffle oil, balsamic pearls, country olives
- **Bali market salad**
Hirabara Farms local greens, carrots, hearts of palm, radish, creamy Maui onion dressing
- **Caesar**

Baby kale, parmesan shavings, garlic crisp, white anchovy, creamy garlic dressing

- **Roasted beet salad**
Quinoa, feta cheese, baby arugula, radish, white balsamic vinaigrette
- Vichyssoise Soup
Crisp leeks, white truffle oil
- **Kona lobster bisque**
Crisp taro threads, crème fraîche, lobster, white truffle oil

Intermezzo

- **Maui gold pineapple**
Rum gelée, lime vanilla sorbet

Main courses (select one)

- **Pan roasted Chilean sea bass**
Truffled risotto, haricot verts, tomatoes, charred lemon beurre blanc
- **Crisp jidori chicken roulade**
Chorizo, manchego, gratin potato, creamed spinach, thyme infused chicken jus
- **Lobster ravioli**
Saffron lobster broth, braised hearts of palm, alii mushrooms, oven roasted tomatoes
- **Saffron gnocchi**
Alii mushrooms, Ho Farms tomatoes, asparagus, chardonnay cream sauce, shaved parmesan
- **Chargrilled prime 8 oz. tenderloin**
Asparagus, baby carrots, cauliflower, Maui onion demi-glace (upgrade to Kobe 10 oz. eye of ribeye – add \$15)
- **New Zealand rack of lamb (\$15)**
Baby potatoes, rainbow chard, Madeira demi-glace

Add to Any Entrée:

- **Lobster Tail (\$12)**
- **King Crab Legs (\$20)**
- **Foie Gras (\$15)**

Silver and gold dessert

- **Tahitian vanilla bean mousse**
Waialua Estate chocolate mousse, chocolate flourless cake, puffed tapioca pearls, caramelized cocoa nib ice cream

For more information on the following venues, please call the hotel.

Rainbow Lanai New Year's Eve Dinner Buffet

Tropics Bar & Grill New Year's Eve Specials

Rainbow Suites Dessert Buffet and Fireworks Viewing

DECEMBER

31



WAIKĪKĪ NEW YEAR'S FIREWORKS



December 31 - Midnight!

Fireworks will be fired on a barge just off Waikīkī Beach. One announcement salute will be fired every minute until the minute before midnight, this will be the signal for everyone to direct their attention to the ocean and to tune your radio **KOOL Gold 107.9, AM690/94.3 FM - The Answer, Country 97.5, and 95.1 FM/AM760 - Honolulu's Real Country** and enjoy the show!

The show will last 8 -10 minutes with many different designs such as palm trees, rings, fans and willows that will fade into the ocean. More than 100,000 Kama`aina and Visitors will view the extravaganza of light and color launched that will be visible all along Waikīkī Beach. It will be a show worthy of our world class destination and also symbolizes Waikīkī Improvement Association members practicing the spirit of Lokahi - or Unity as everyone comes together to make this event possible.

Waikīkī Improvement Association

2250 Kalakaua Ave Suite 315, Honolulu, HI 96815 808.923-1094

SPONSORED BY:

Halekulani Hotel, Kyo-ya Management Co, Outrigger Enterprises Inc. Aqua-Aston Hospitality, Hyatt Regency Waikīkī Resort & Spa, Waikīkī Beach Marriott Resort
Alohilani Resort Waikīkī Beach, International Market Place, Royal Hawaiian Center
ABC Stores, Aston Waikīkī Beach Hotel, Prince Waikīkī, Queen Emma Land Co, Waikīkī Shopping Plaza
Hilton Waikīkī Beach Hotel, DFS Hawai'i, Luxury Row/2100 Kalākaua, Trump International Hotel
First Hawaiian Bank - Waikīkī, The Modern Honolulu, Hyatt Place Waikīkī Beach
Hilton Garden Inn, Central Pacific Bank -Waikīkī, Duke's Waikīkī, Hyatt Centric, Queen Kap'olani Hotel
Robertson Properties, Ambassador Hotel, New Otani-Kaimana Beach Hotel, OLS Hotels & Resorts
The Laylow, Tiki's Grill & Bar, Securitas Security Services



'Tis The Season for

Winter
WISHES
A HOLIDAY FESTIVAL



12/07

Groovy, baby! You'll be sippin' on the "cool-aid" at our festive **70's Disco Skate Party**. Boogie down with us in your most stylish duds from the 1970's. We'll catch ya' on the flip side!



12/14

Rock out to 90's jams at our **90's Glow Skate Party**. Come in your best and brightest and enjoy a live DJ and specialty cocktails. It'll be all that and a bag of chips!

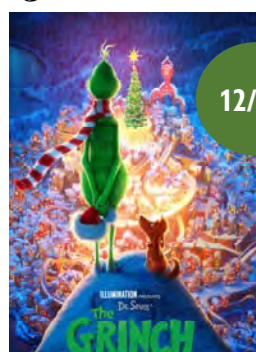


12/21

Put on your best, your loudest, your **UGLIEST** Christmas sweater for the Hawaii Convention Center's first ever **Ugly Sweater Skate Party**. Join us for festive cocktails, skating, and more!

Holiday Movie Night

every Thursday at 6:30 p.m.!



UPCOMING EVENTS

with estimated attendance

- 11/29-12/24 Winter Wishes--A Holiday Festival (18000)
- 12/05-12/09 2019 Honolulu Marathon Expo (60,000)
- 12/07 JROTC Winter Ball (1000)
- 12/08 'Iolani Stage Band Winter Concert (300)
- 12/09-12/16 Golder Global Partner Meeting (750)
- 12/10 CX Tour Hawai'i (40)
- 12/15 Miss Windward O'ahu Pageant (400)
- 12/18-12/21 Hoops in Hawai'i D2 Power Invitational (1155)



General Tickets
& Season Passes
available for purchase at

honoluluboxoffice.com

For additional event details and a full calendar of events, visit hawaii-convention.com.

[@HawaiiConventionCenter](https://www.facebook.com/HawaiiConventionCenter) [@HIConventionCtr](https://twitter.com/HIConventionCtr) [@HawaiiConventionCenter](https://www.instagram.com/HawaiiConventionCenter)

HawaiiConvention.com